



Texas Instruments TI-30Xa Battery Replacement

This guide will show, step by step, the battery...

Written By: Chris L



INTRODUCTION

This guide will show, step by step, the battery replacement for the TI-30XA scientific calculator.

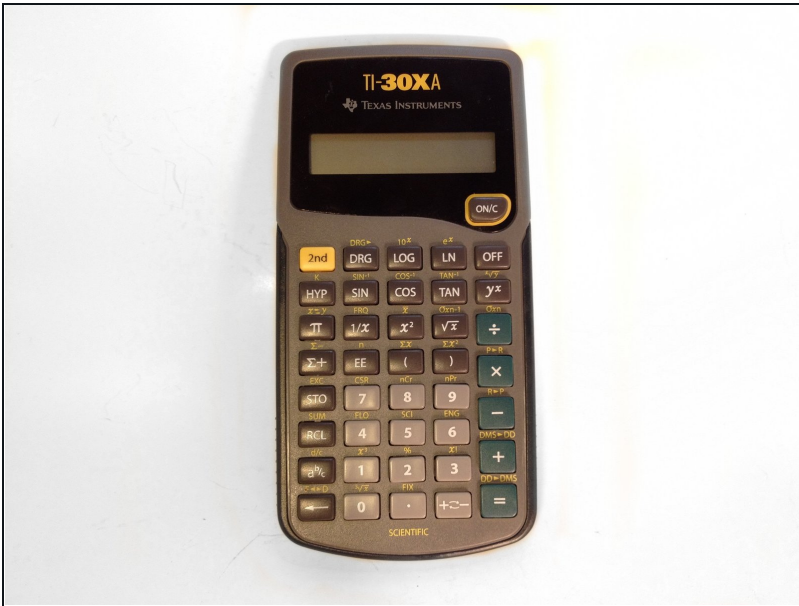
TOOLS:

Phillips #0 Screwdriver (1)
1/4" Flathead Screwdriver (1)

PARTS:

LR44 (A-76) Batteries (1)

Step 1 — TI-30XA Battery Replacement



- Here's the fully assembled TI-30XA calculator.

Step 2



- Locate the six screws on the back of the calculator.
- With a Phillips #0 screwdriver, loosen and remove the screws.

Step 3



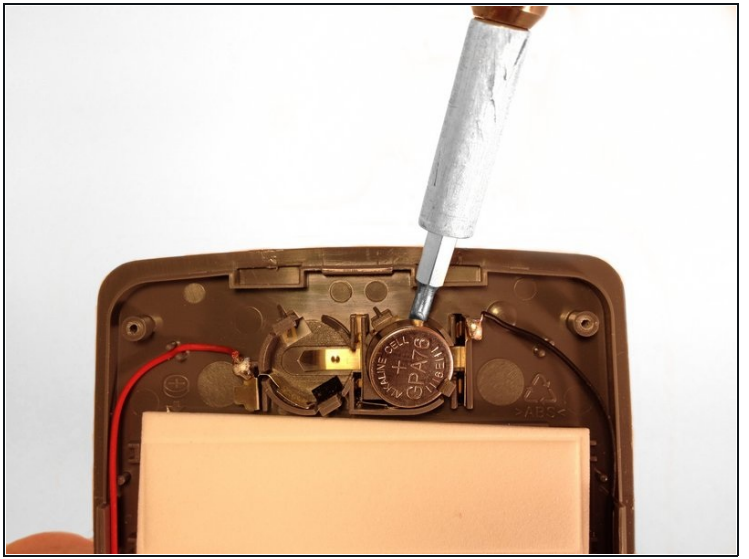
- Find the two notches at the top of the calculator.
 - Insert a flat-head screwdriver into one of the notches and carefully pry open the top end of the case.
 - Locate where the case is still attached at the sides.
 - Insert the flat-head screwdriver into one side where the gap has widened.
 - Now gently pry apart the sides of the case.
- ⓘ Prying only one side will release the other side as well.

Step 4



- Now separate the two panels from one another.

Step 5



- The two LR44 batteries are located at the top.
 - Slide the flat-head screwdriver underneath each battery and they will easily pop out.
-

To reassemble your device, follow these instructions in reverse order.