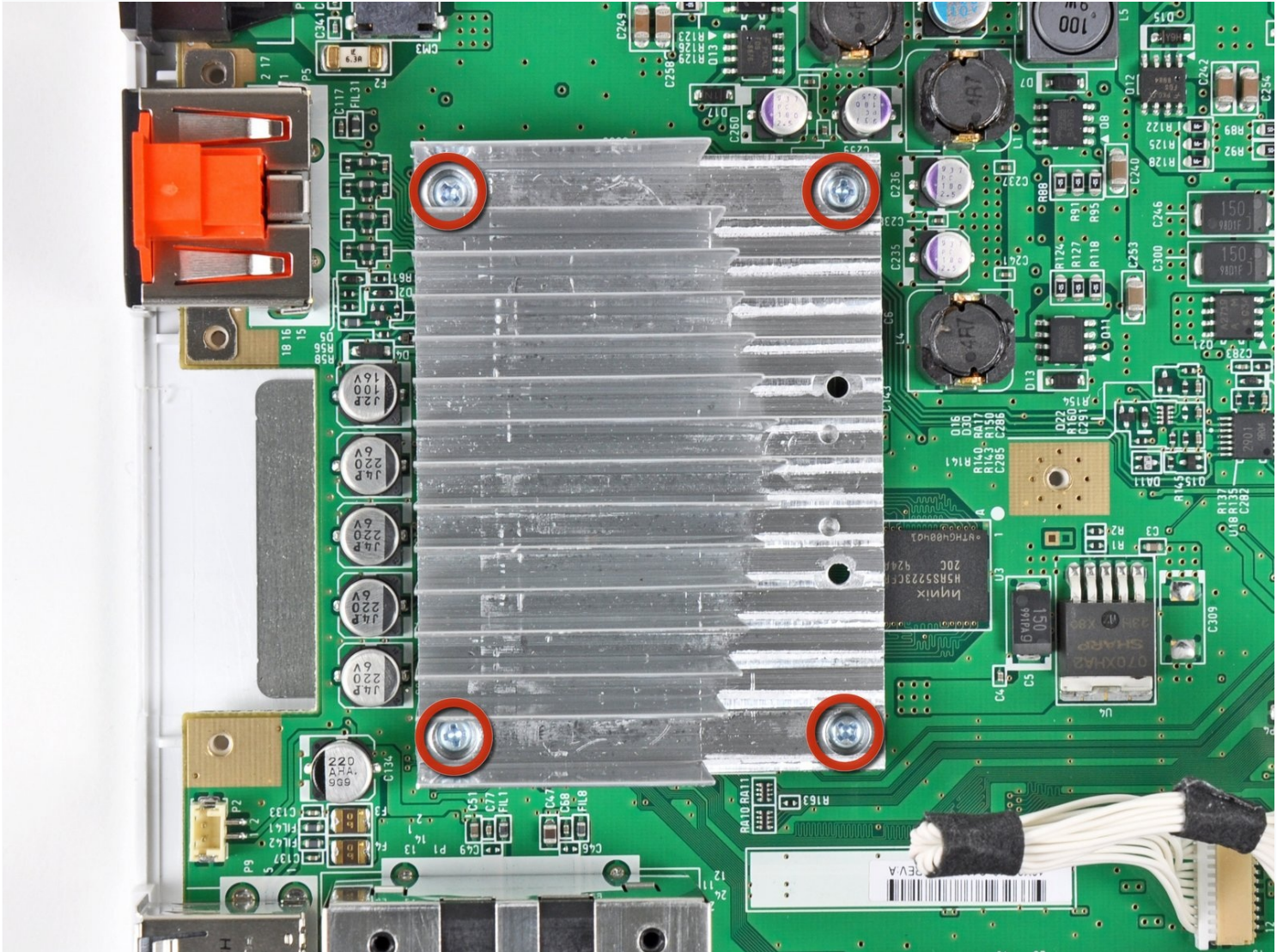




Nintendo Wii Heat Sink Replacement

Use this guide to remove the heat sink from...

Written By: Andrew Bookholt



INTRODUCTION

Use this guide to remove the heat sink from your Wii's motherboard.

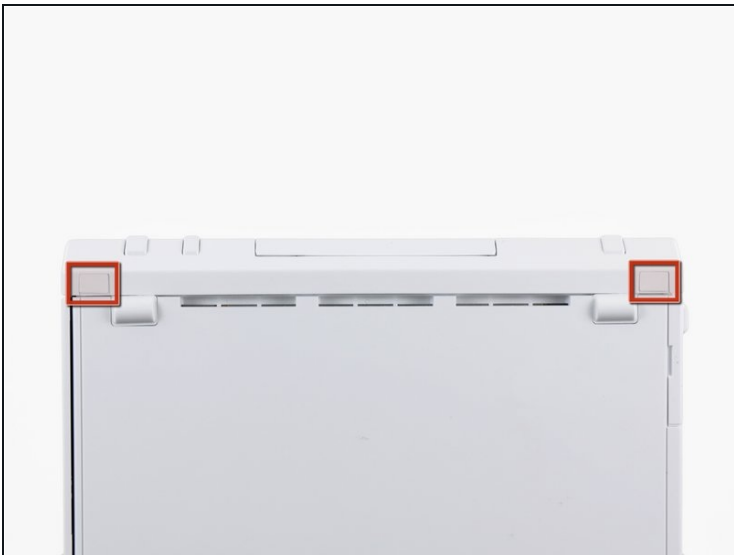
TOOLS:

Metal Spudger (1)
Phillips #00 Screwdriver (1)
Tri-point Y1 Screwdriver (1)
Tweezers (1)

PARTS:

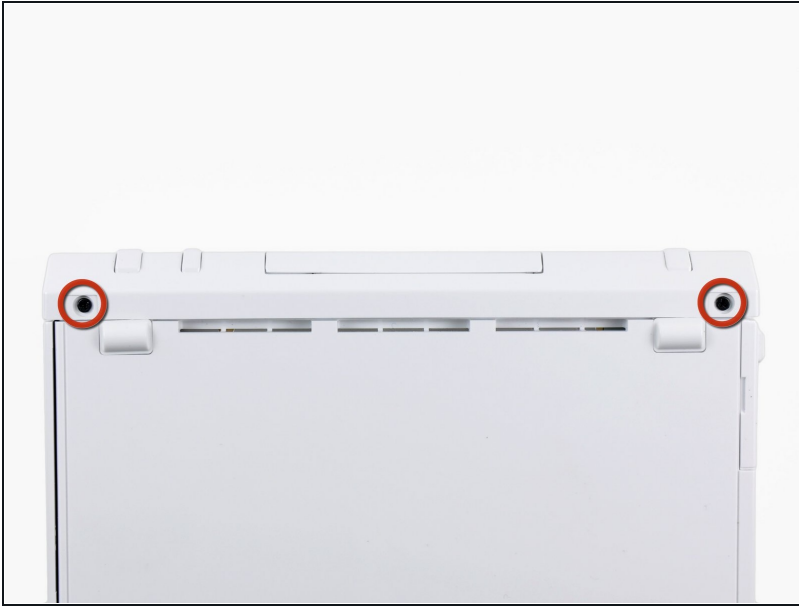
Nintendo Wii Heat Sink (1)

Step 1 — Faceplate



- Use a metal spudger to remove the white plastic screw covers stuck to the lower case near the front of the Wii.

Step 2



- Remove the two 8.3 mm Tri-Point screws hidden under the covers you just removed.

Step 3



- Remove the single 5.9 mm Phillips screw under the controller port door nearest the faceplate.

Step 4



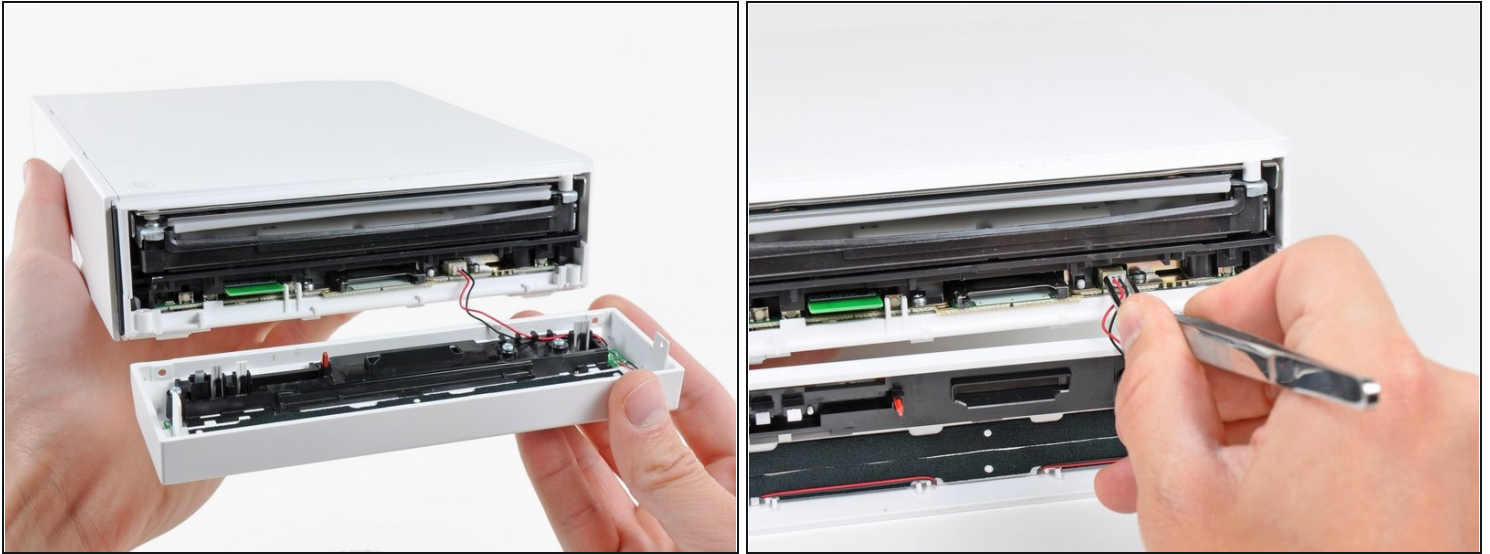
- Use a metal spudger to remove the rubber foot stuck to the side of the Wii near the DVD drive opening.

Step 5



- Remove the single 5.9 mm Phillips screw hidden under the foot you just removed.

Step 6



- Carefully pull the faceplate away from the front of the Wii.
- Use a pair of [tweezers](#) to disconnect the LED cable's plastic connector from the motherboard.
- Remove the faceplate.

Step 7 — Outer Case



- Open the controller port cover until it is perpendicular to the black controller port bezel.
 - Pull the controller port cover straight up to release it from the outer case.
- ① Repeat this procedure for the memory card port cover.

Step 8



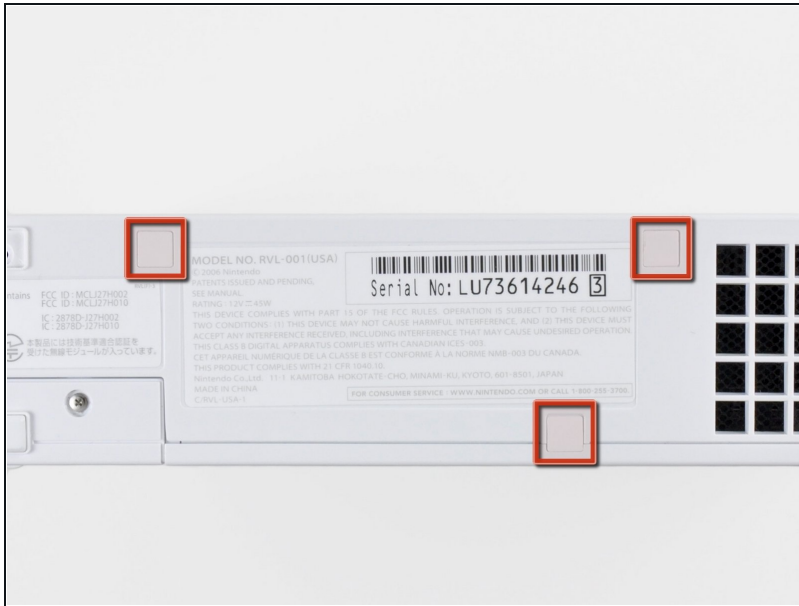
- Remove the two remaining 4.1 mm Phillips screws along the top edge of the black plastic controller port bezel.
- Lift the bezel from the long edge furthest away from the controller ports and remove it from the Wii.

Step 9



- Remove the two 5 mm Phillips screws above the controller ports.

Step 10



- Use a metal spudger to remove the three highlighted screw covers stuck to the side of the Wii.

Step 11



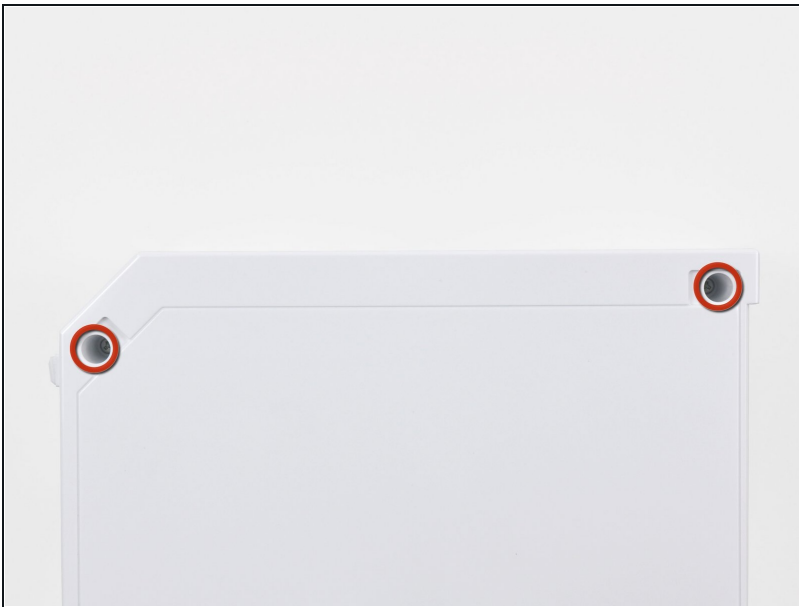
- Remove the following screws:
 - Two 5 mm Phillips screws
 - One 8.2 mm Tri-Point screw

Step 12



- Use a metal spudger to remove the two rubber feet stuck to the bottom face of the Wii near the rear ports.

Step 13



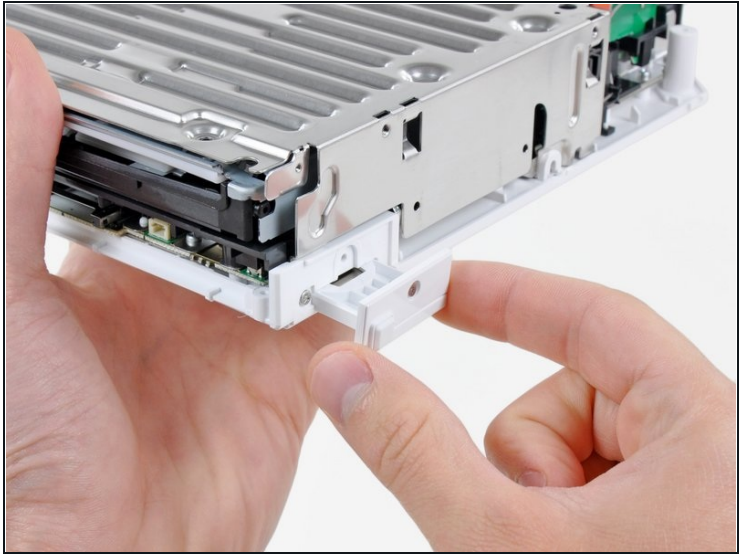
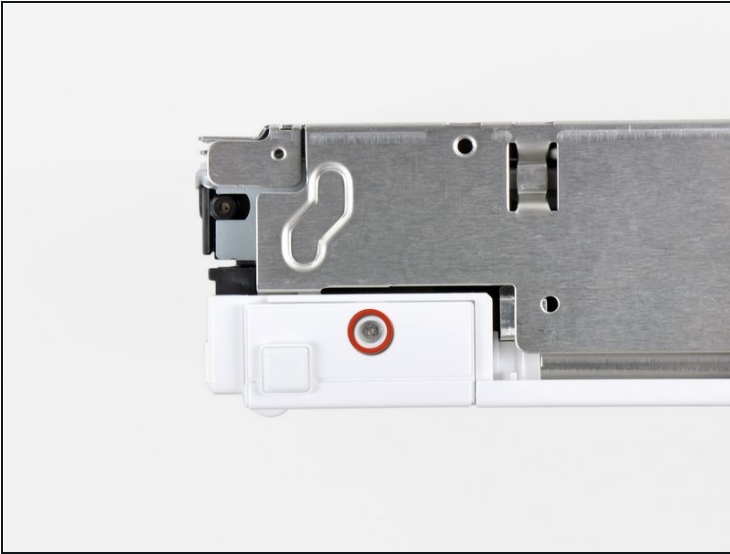
- Remove the two 8.2 mm Tri-Point screws hidden under the feet you just removed.
- ① You may use a 4 mm hex driver to extend your bit into the recesses and reach the screws.

Step 14



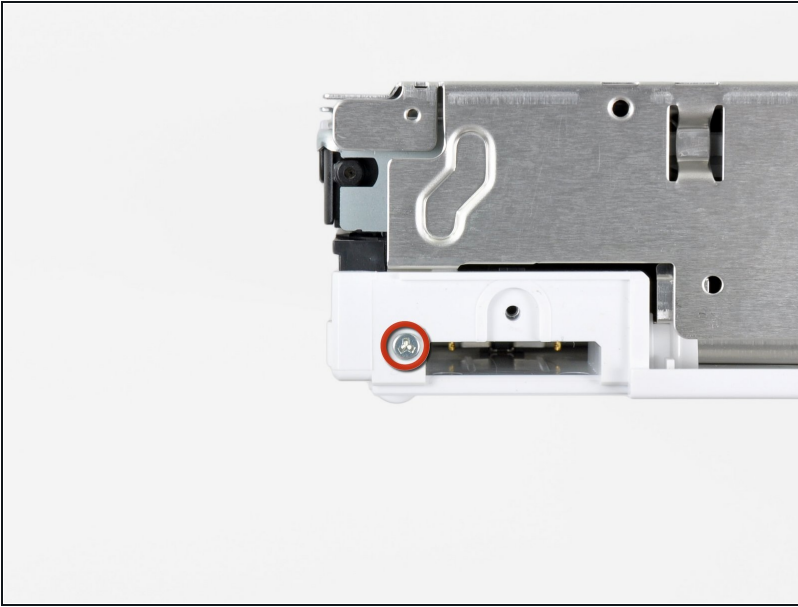
- Lift the outer case straight up off the body of the Wii.

Step 15 — DVD Drive



- Remove the small Phillips screw securing the battery door to the bottom panel.
- ① This screw is captive to the battery door.
- Pull the battery door out of the Wii.
- ① The system time will be reset once you remove the battery door.
- ① This is a good time to change the CR2032 battery if it hasn't been changed recently.

Step 16



- Remove the 8.2 mm Tri-Point screw that was hidden beneath the battery door.

Step 17



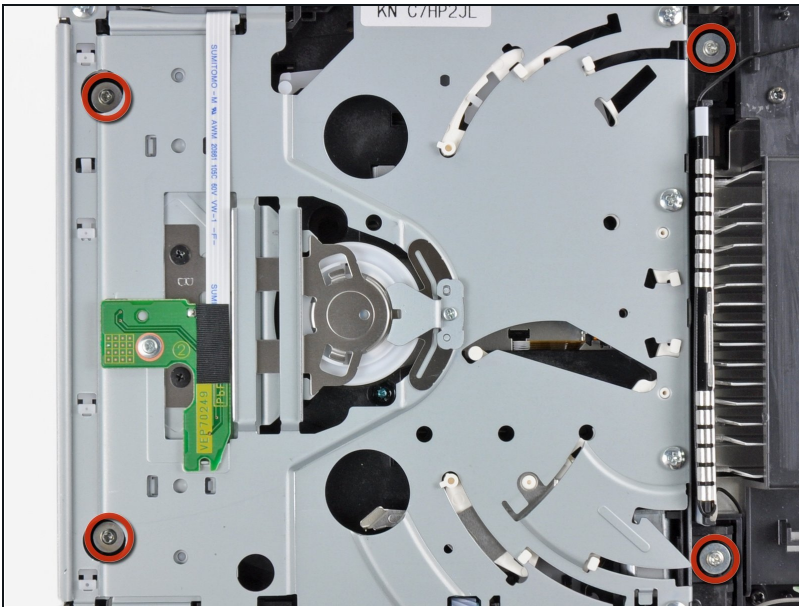
- Remove the two 8.2 mm Tri-Point screws securing the DVD drive shield near the controller ports.

Step 18



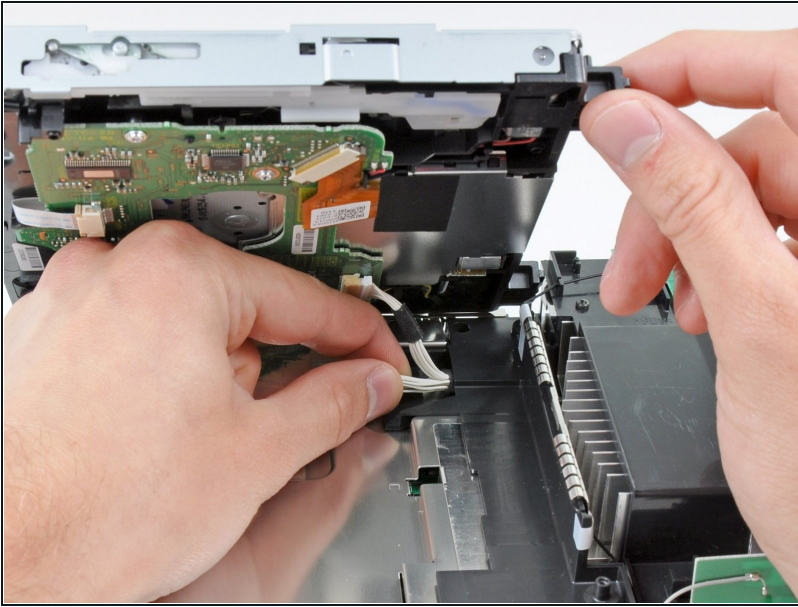
- Lift the DVD drive shield upward and remove it from the Wii.

Step 19



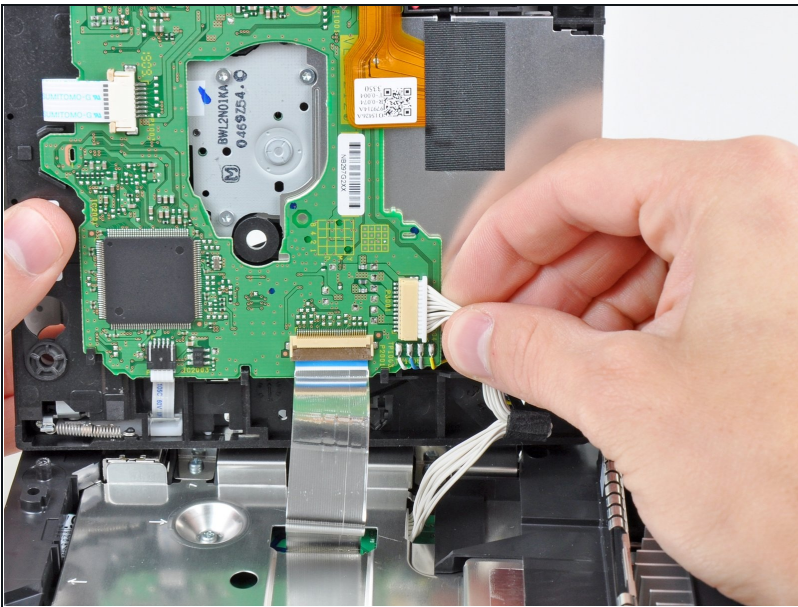
- Remove the four 9 mm #1 Phillips screws securing the DVD drive to the bottom panel.

Step 20



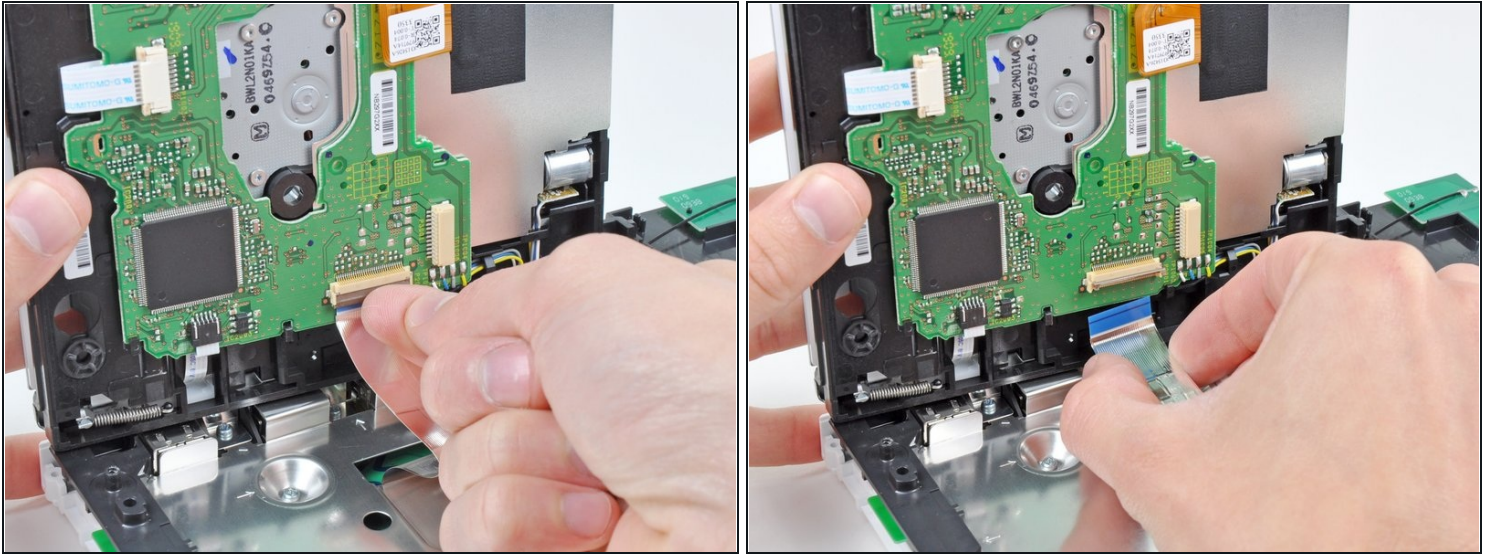
- Lift the side of the DVD drive opposite the controller ports enough to access the cables on its bottom face.
- Carefully pull the DVD drive power cable out from under the plastic shroud near the heat sink.

Step 21



- Pull the DVD drive power cable away from its socket on the DVD drive.

Step 22

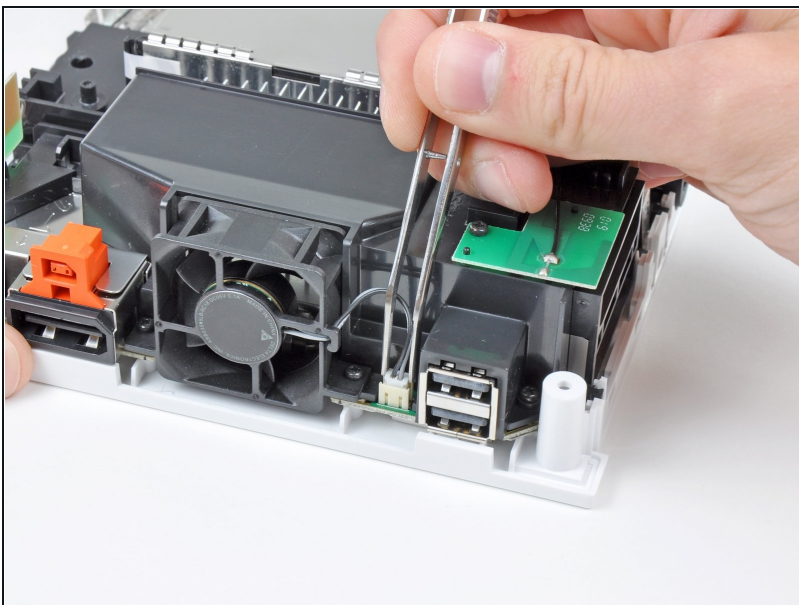


- Use your fingernail to flip up the retaining flap on the DVD drive ribbon cable socket.

⚠ Be sure you are prying up on the retaining flap, **not** the socket itself.

- Pull the DVD drive ribbon cable out of its socket.
- Remove the DVD drive from the Wii.

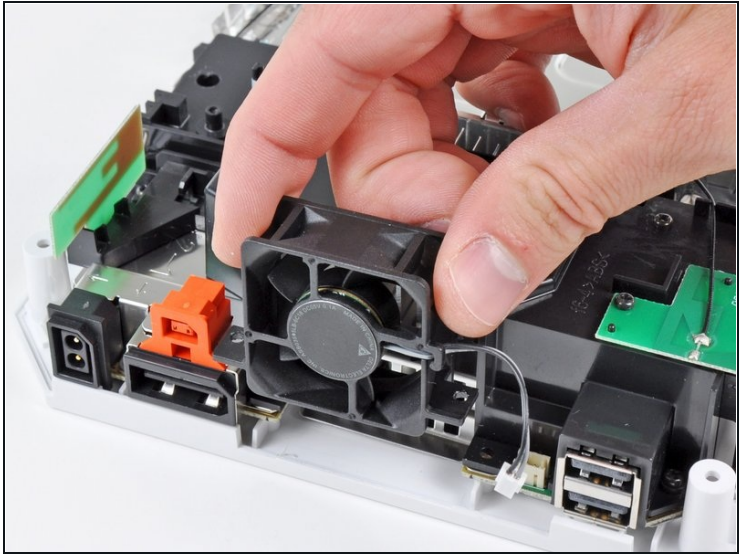
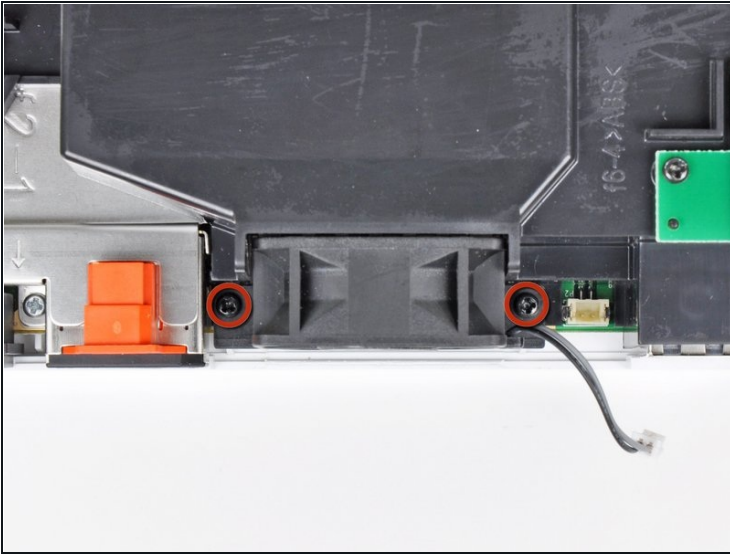
Step 23 — Motherboard Cover



- Use a pair of [tweezers](#) to lift the fan connector up and out of its socket on the logic board.

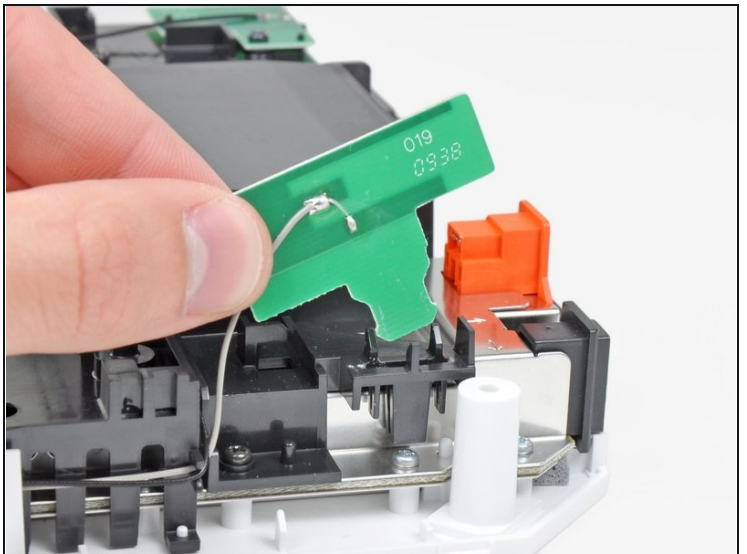
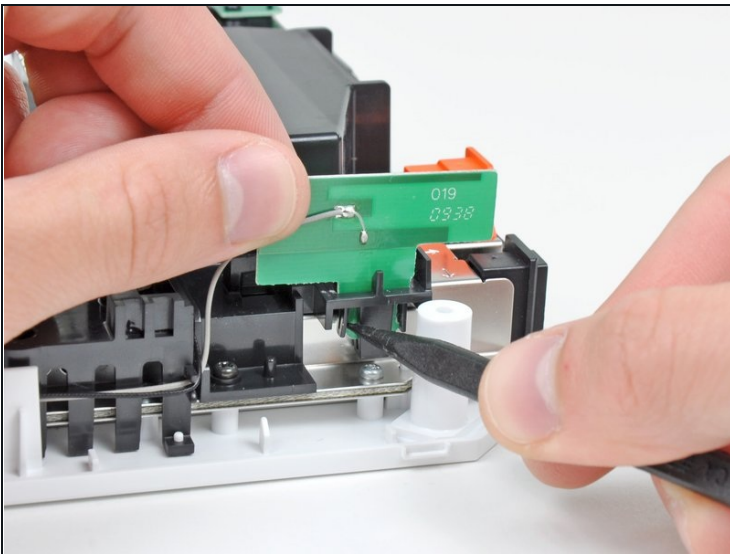
⚠ Be sure your tweezers are clamped down on the fan connector, **not** the socket on the motherboard.

Step 24



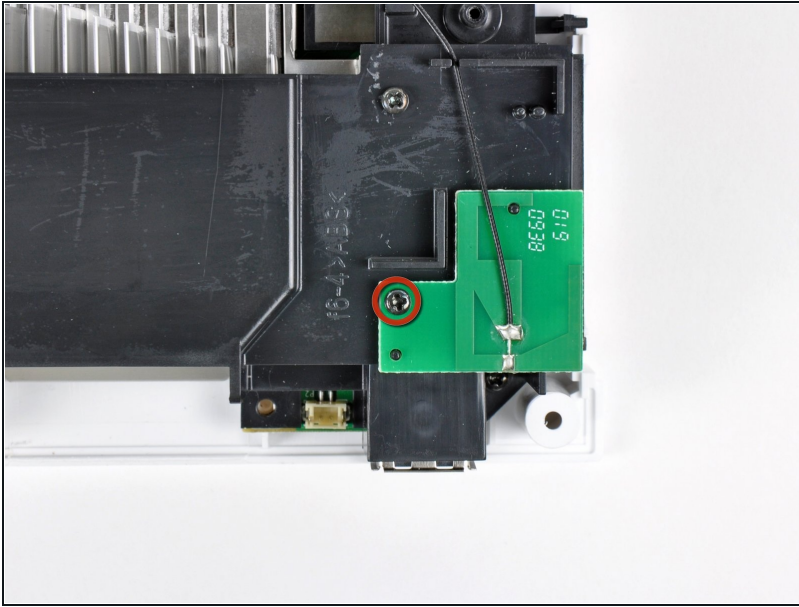
- Remove the two 10 mm Phillips screws securing the fan to the fan shroud.
- Remove the fan from the Wii.

Step 25



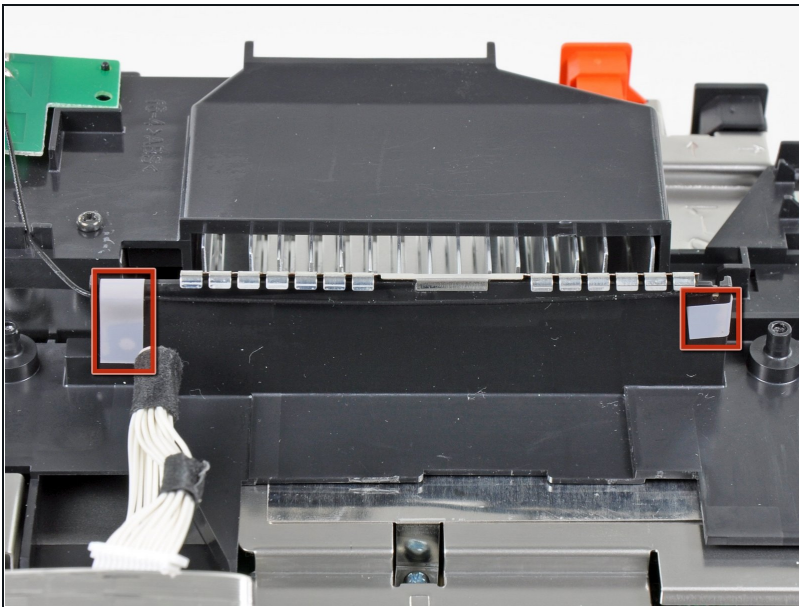
- Use the tip of a spudger or another fine-pointed tool to carefully pry one of the black plastic retaining fingers attached to the fan shroud away from the Wi-Fi antenna board.
- Lift the Wi-Fi antenna out of the fan shroud.

Step 26



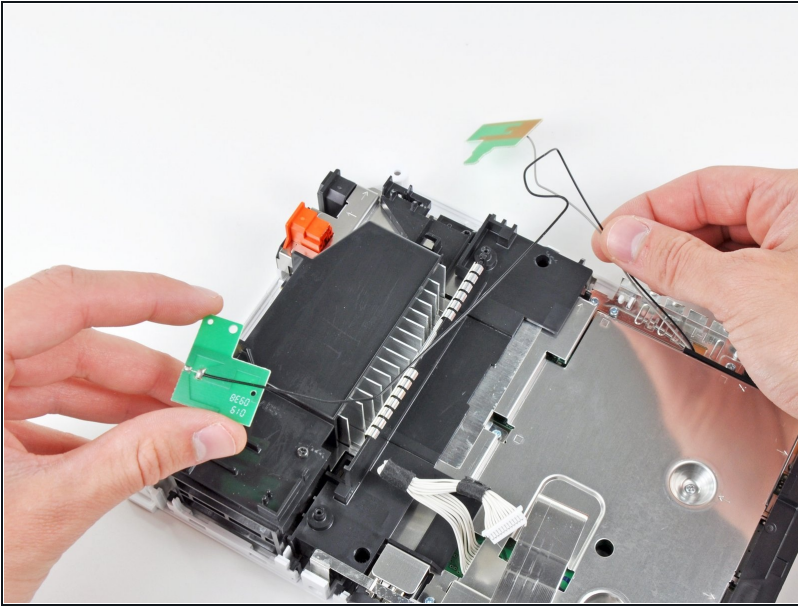
- Remove the single 10 mm Phillips screw securing the second Wi-Fi antenna to the top of the fan shroud.

Step 27



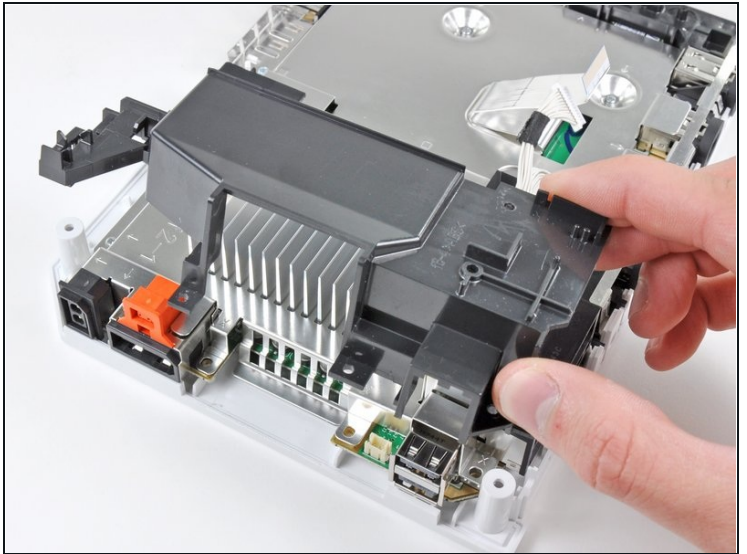
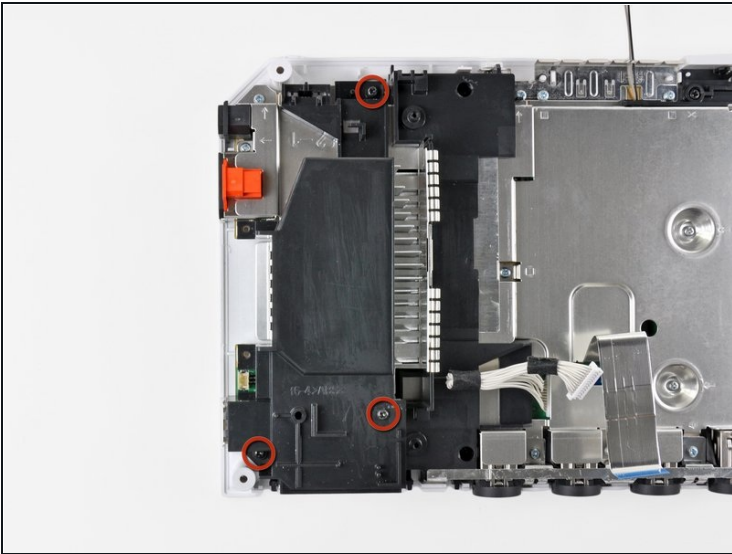
- Remove the two pieces of tape securing the second Wi-Fi antenna cable to the plastic bracket near the heat sink.

Step 28



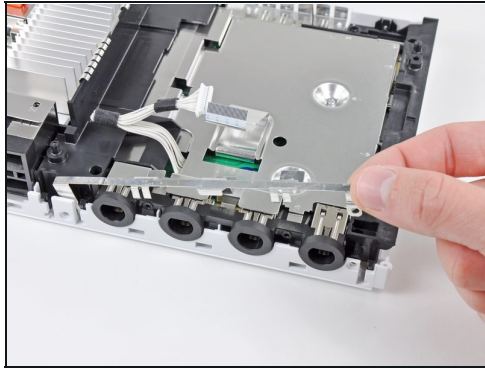
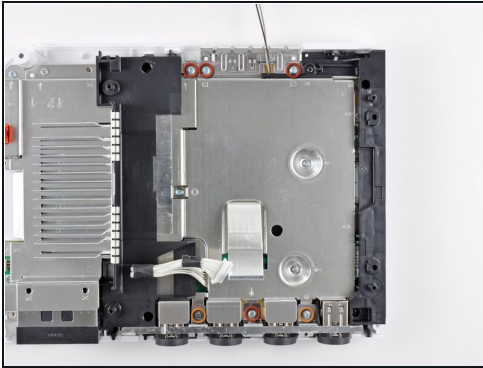
- Carefully de-route both antennas from the frame of the Wii and lay them aside.

Step 29



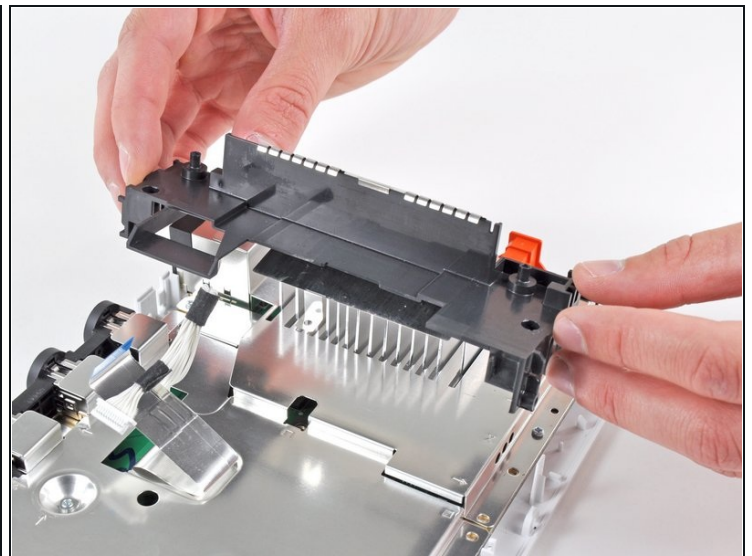
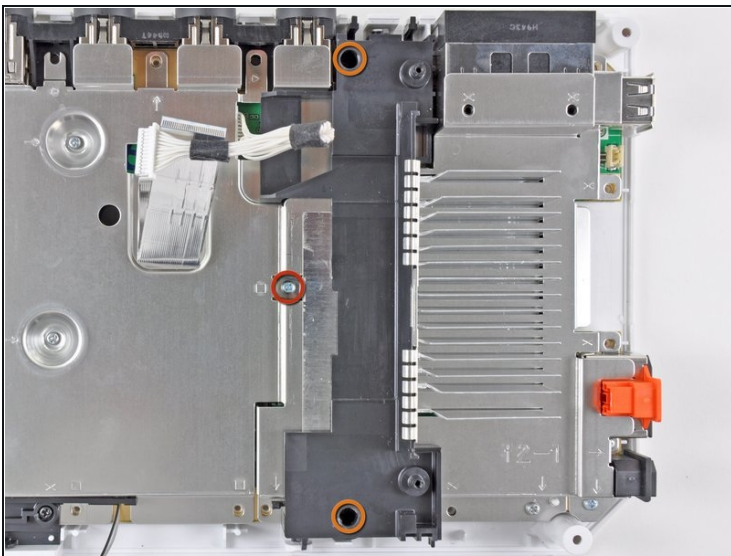
- Remove the three 10 mm Phillips screws securing the fan shroud to the Wii.
- Lift the fan shroud off the heat sink and remove it from the Wii.

Step 30



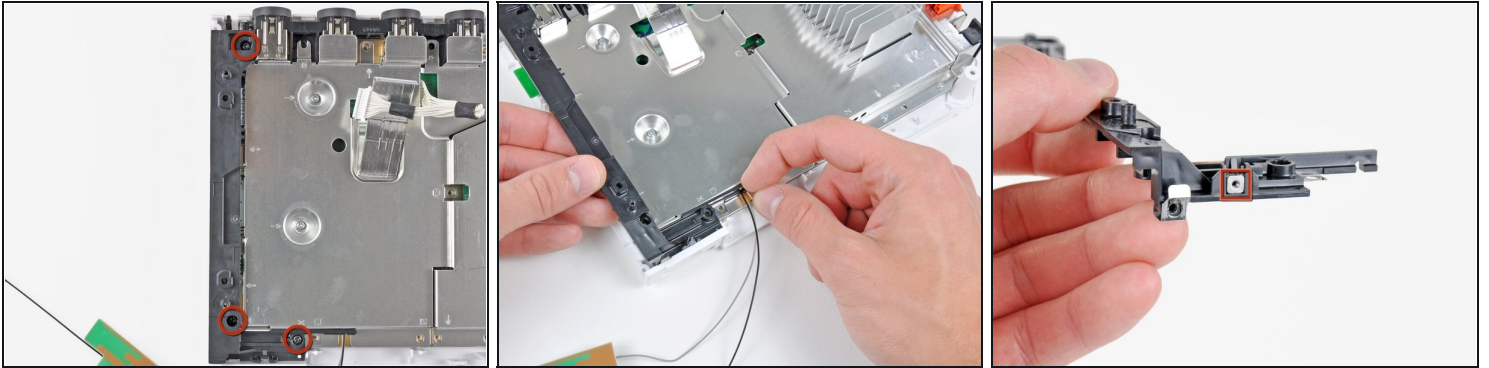
- Remove the following six screws securing the EMI fingers to the bottom panel:
 - Four 7 mm Phillips screws
 - Two 11.3 mm Phillips screws
- Remove both sets of EMI fingers from the Wii.

Step 31



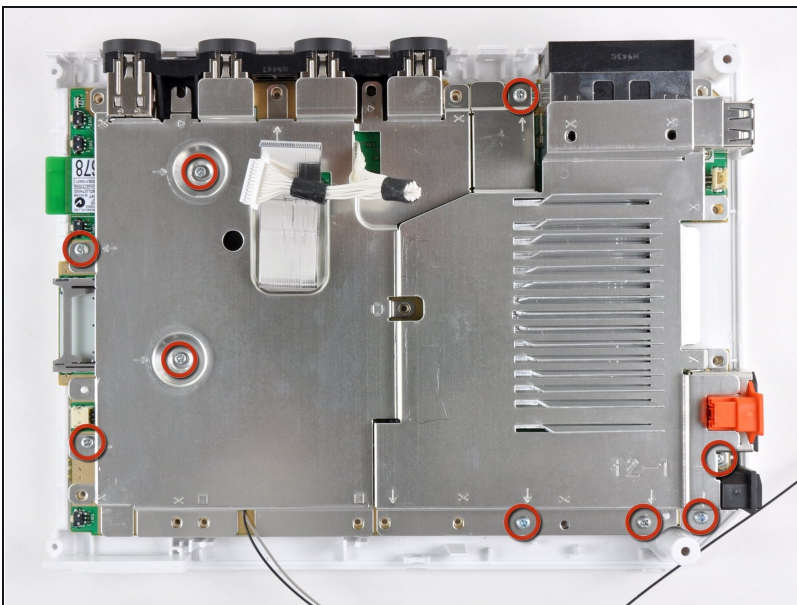
- Remove the following three screws:
 - One 7 mm Phillips screw
 - Two 10 mm Phillips screws
- Lift the bracket out of the Wii.

Step 32



- Remove the three 10 mm Phillips screws securing the black bracket to the bottom panel near the front of the Wii.
 - Slightly lift the bracket and use your other hand to pull the retaining clip away from where the Wi-Fi antennas enter the motherboard shield.
 - Remove the bracket from the Wii.
- ⓘ Be sure not to lose the small square nut loosely held by the black plastic bracket.

Step 33



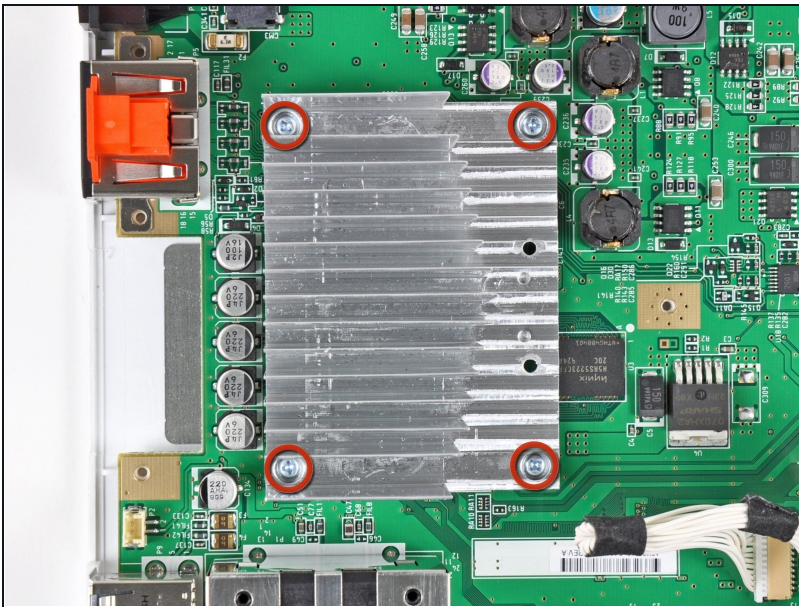
- Remove the nine remaining 7 mm Phillips screws securing the motherboard cover to the bottom panel.

Step 34



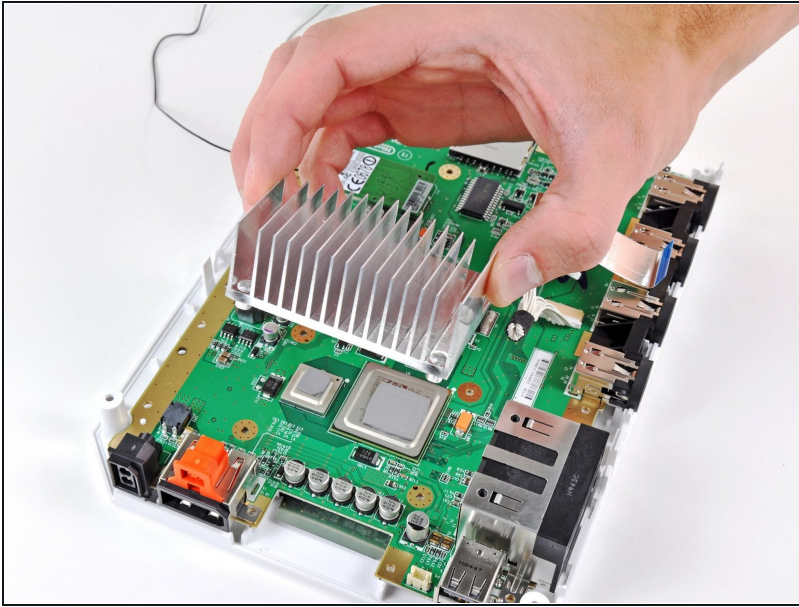
- Carefully lift the motherboard cover off the motherboard, minding any cables that may get caught.
- ★ On some models, a thermal pad for the wireless chip is attached to the underside of the motherboard cover. Be sure to replace it when reassembling.

Step 35 — Heat Sink



- Remove the four 11.3 mm Phillips screws securing the heat sink to the bottom panel.

Step 36



- Lift the heat sink off the motherboard.

⚠ When working near the exposed processors, be sure not to disturb the thermal pads if you don't plan to replace them. They are fragile and can tear easily. If you do plan to replace the thermal pads, thermal paste can be used.

To reassemble your device, follow these instructions in reverse order.