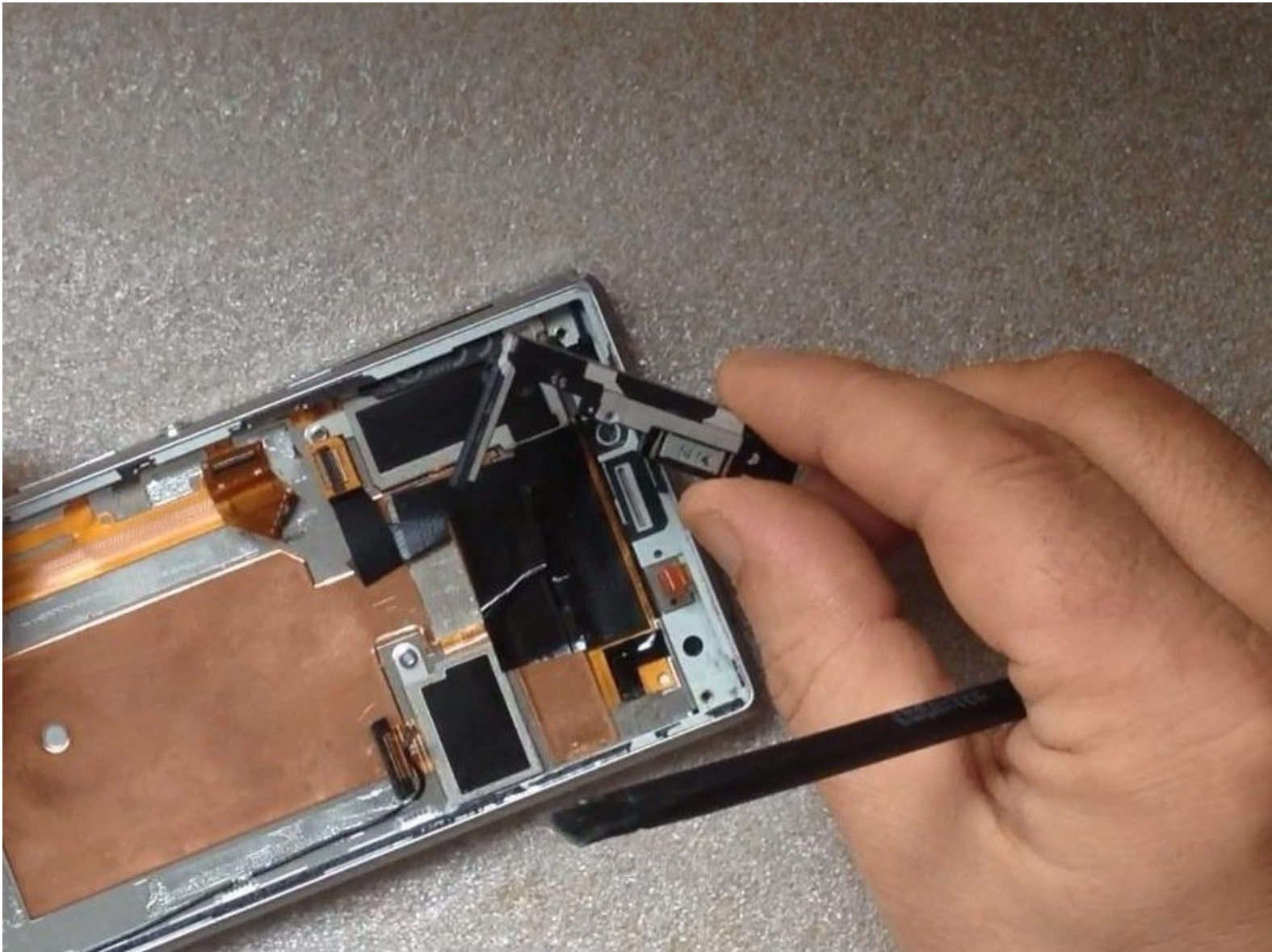




# Sony Xperia M2 Earpiece Replacement

Sony Xperia M2 Earpiece Replacement

Written By: ZFix



---

# INTRODUCTION

How to disassemble the phone and change the Earpiece.

[Please SUBSCRIBE to my channel ツ](#)

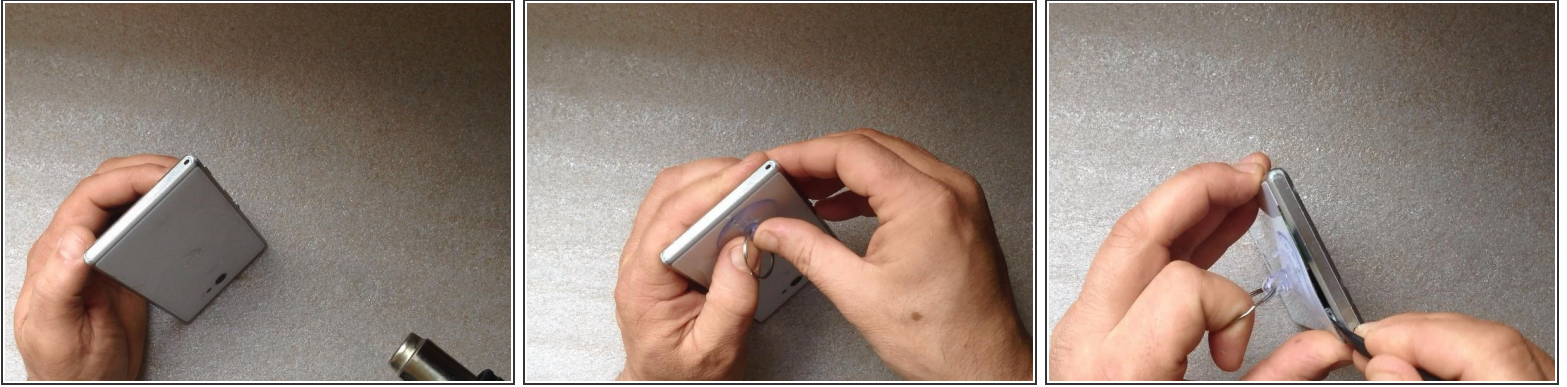
[video: [http://youtu.be/TpZRy6rl\\_hc](http://youtu.be/TpZRy6rl_hc)]



## TOOLS:

- [iFixit Opening Tools](#) (1)
  - [Suction Handle](#) (1)
  - [Spudger](#) (1)
  - [Phillips #0 Screwdriver](#) (1)
-

## Step 1 — Rear Cover



- Warm the Back Cover. You can use a hairdryer.

⚠ Be careful, the Cover is plastic.

- Use a small suction cup and plastic tools for separating the Rear panel.
- Before installing the new cover, you must clean the phone from the old adhesive tape and install a new one if your spare part has come without double sided adhesive tape.

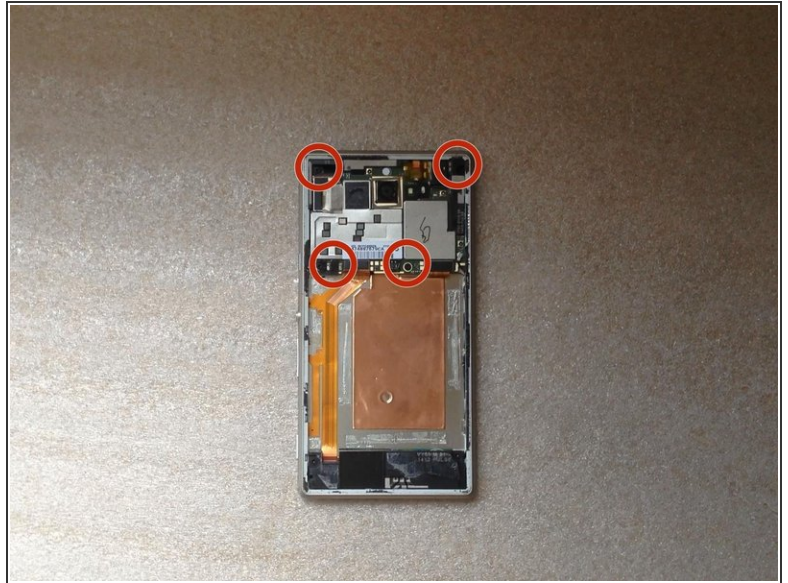
## Step 2 — Battery



- Disconnect the Battery Cable.
- The battery is stuck to the phone frame. Use the white tape to remove it.
- Li-Polymer Battery, 2230 mAh
- Part number: LIS1551ERPC
- [Please SUBSCRIBE to my channel ツ](#)

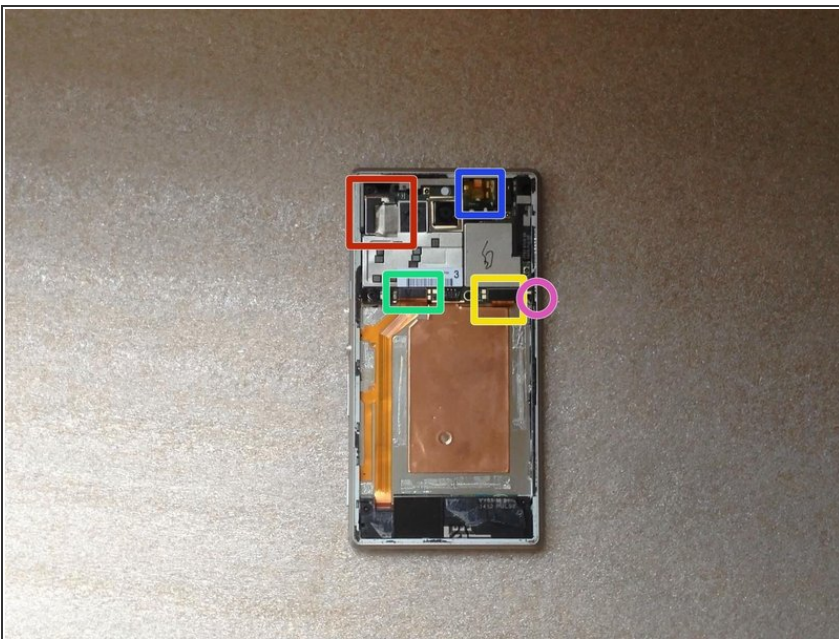


## Step 3 — Logic Board



- Remove the SIM and the memory cards.
- Remove x4 T5 Torx Corner screws & x2 T5 Torx Screws on the Board

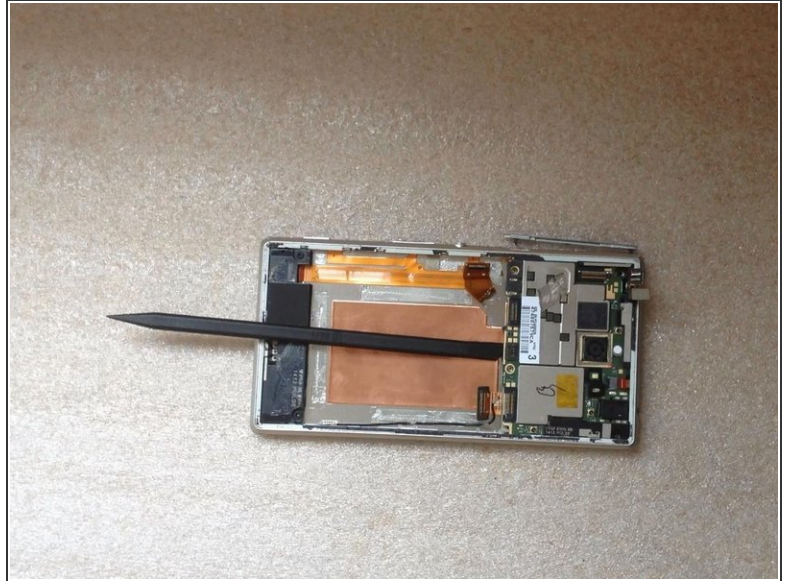
## Step 4



- Disconnect one by one:
  - Touchscreen flex cable
  - Proximity sensor flex cable
  - Power on, Volume buttons cable
  - SIM & Micro SD flex cable
  - Coaxial antenna cable

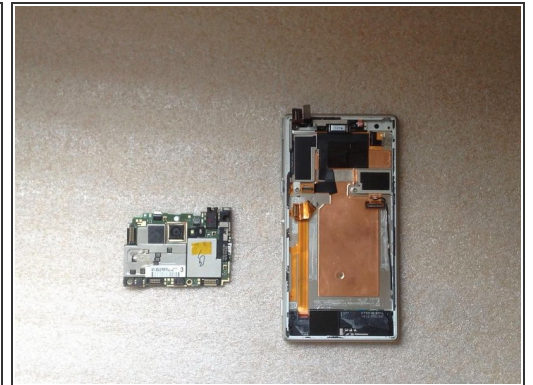
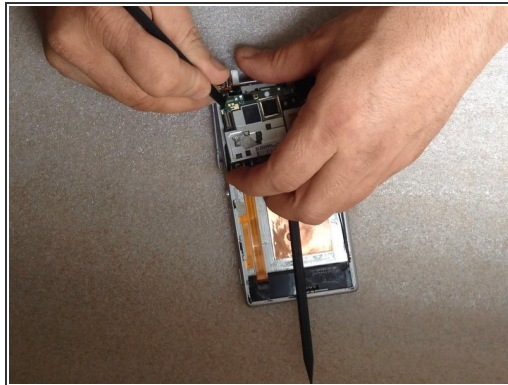
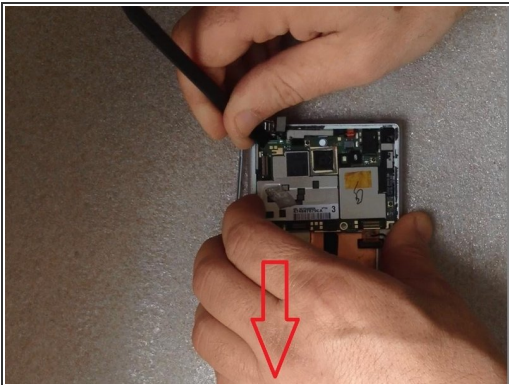


## Step 5



- Disconnect the LCD Display flex cable. The connector is on the other side of the board, under the Power/Volume buttons flex cable connector.
- Put one plastic spudger between the Logic board and the Main frame.

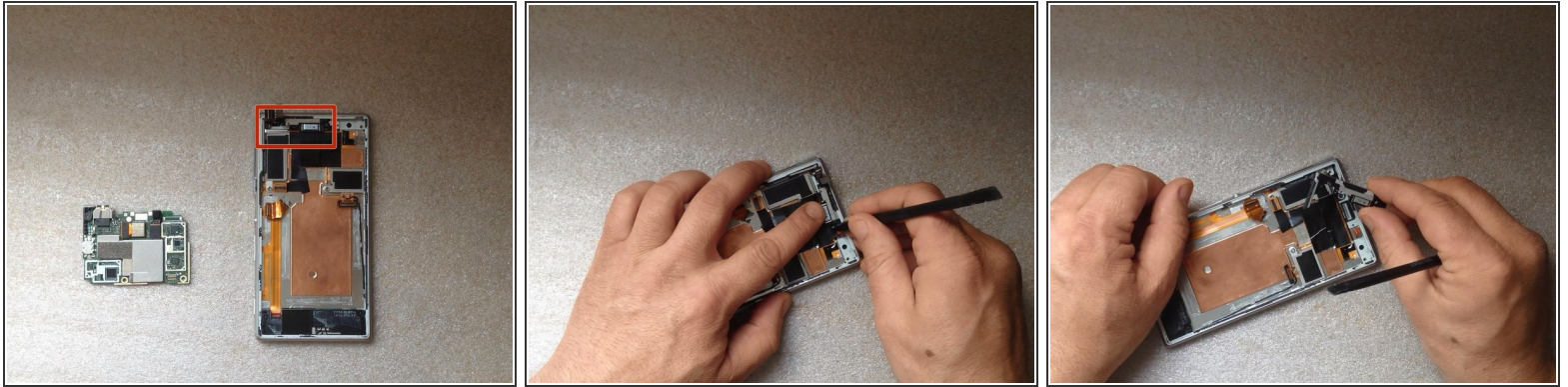
## Step 6



- ⚠ Step one: move aside less the left side of the board - down.
- ⚠ Step two: the left side of the Logic board must go out of the main frame.
- ⚠ **For this manipulation use only plastic tools.**

📌 [Please SUBSCRIBE to my channel ツ](#)

## Step 7 — Earpiece



- With a plastic tool remove the Earpiece module.



[Please SUBSCRIBE to my channel ツ](#)

To reassemble your device, follow these instructions in reverse order.