



Panasonic GU87 SIM Card Replacement

If your Panasonic GU87 SIM card is damaged or...

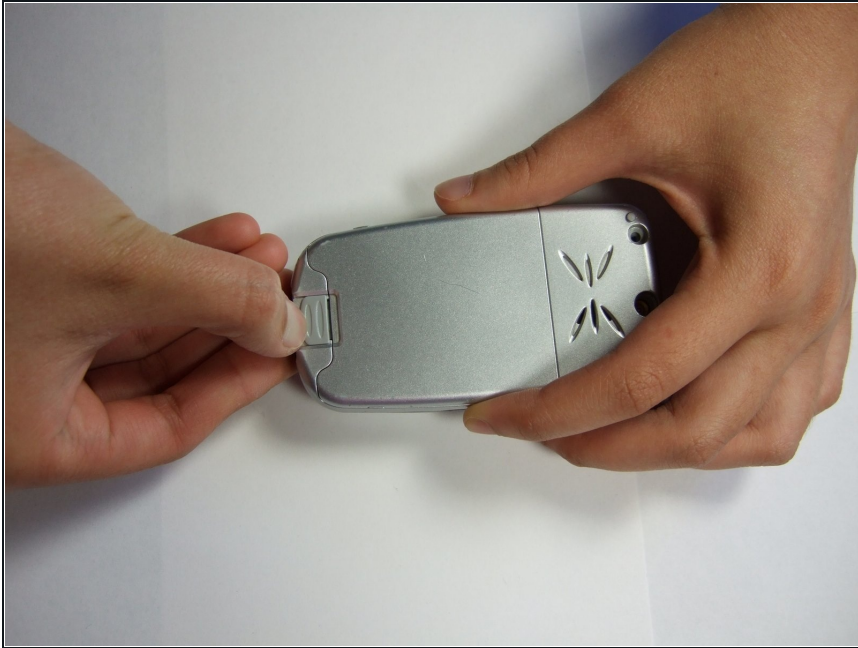
Written By: Daniel



INTRODUCTION

If your Panasonic GU87 SIM card is damaged or no longer working, use this guide to help you replace the SIM card. If you're having issues with your SIM card or cellular network connection, replacing the SIM reader may resolve the problem.

Step 1 — Battery



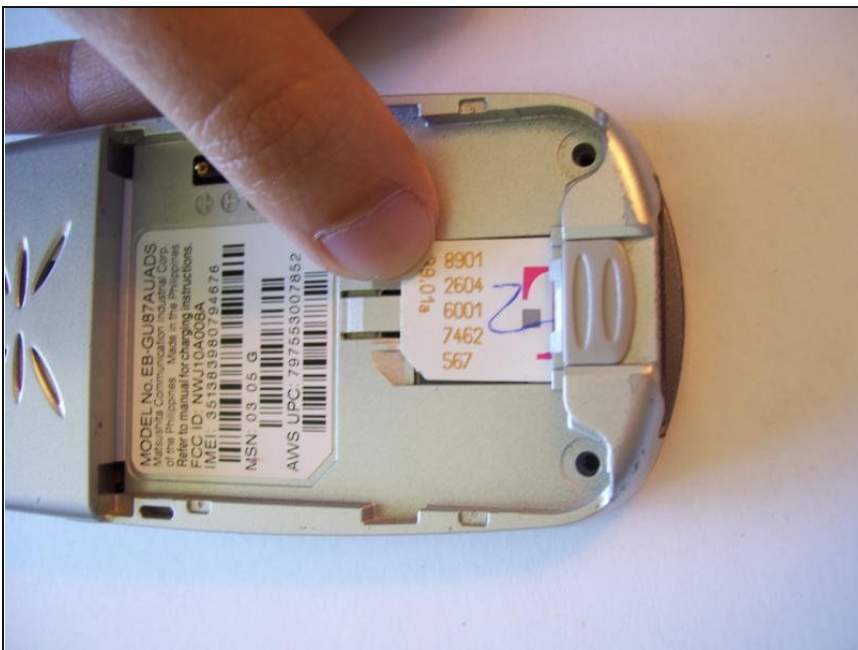
- Place your hands on the phone as shown in picture. Slightly pull the tab away from the phone with your thumb.

Step 2



- Lift the battery up from the phone as shown. Replace with a new battery if the old battery has become worn out.

Step 3 — SIM Card



- Using your index finger, insert the SIM card into the slot, making sure it's face the right direction.

To reassemble your device, follow these instructions in reverse order.

