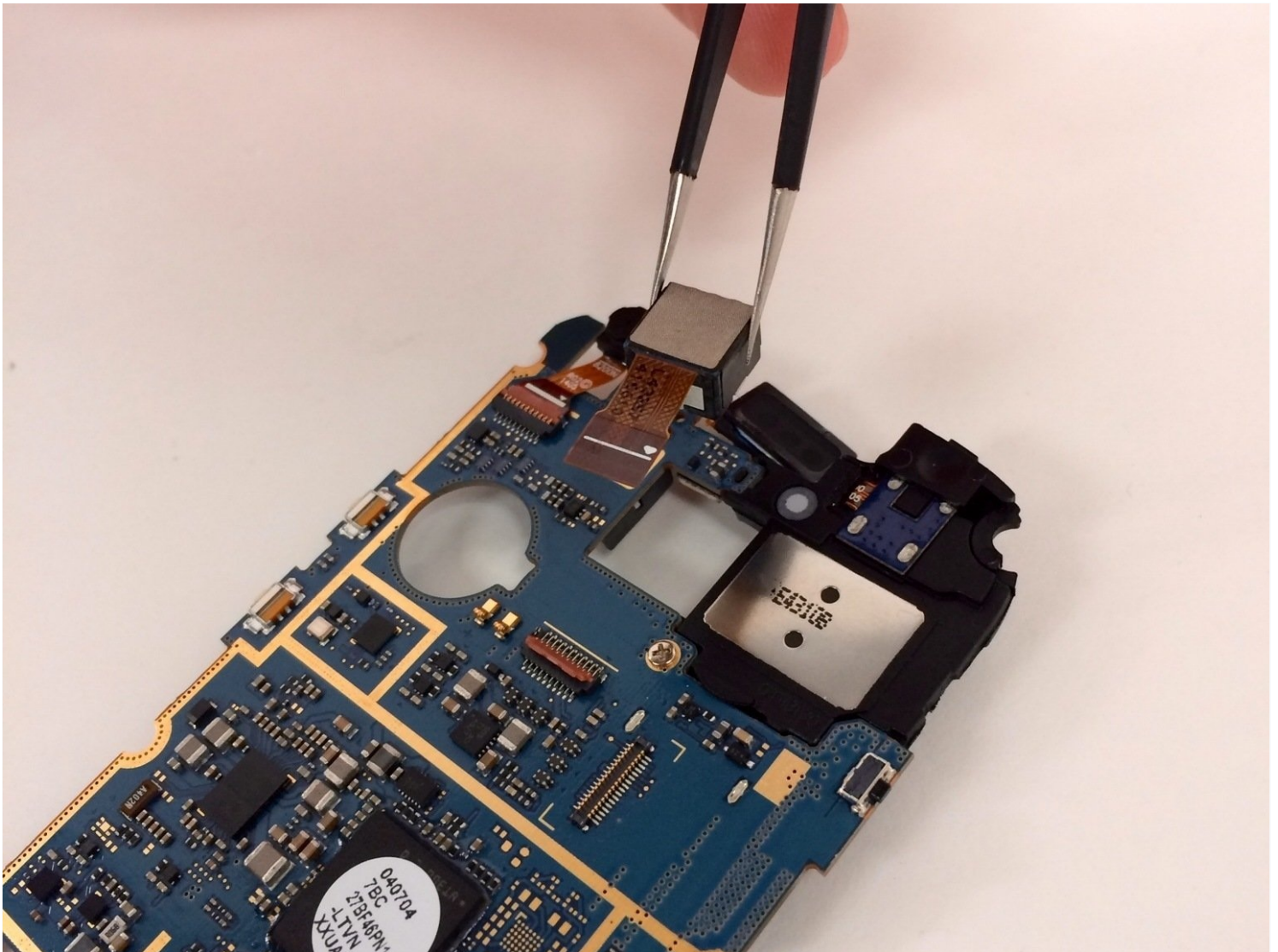




Samsung Galaxy SIII Mini VE Rear Camera Replacement

You can replace the rear camera on your Galaxy...

Written By: Megan



INTRODUCTION

You can replace the rear camera on your Galaxy SIII Mini VE using these steps.

TOOLS:

Phillips #00 Screwdriver (1)

iFixit Opening Tool (1)

Spudger (1)

Step 1 — Removing Rear Casing



- Flip your phone so you are facing the back.
- Locate the notch at the top and gently use your finger or an opening tool to remove the rear casing.

Step 2 — Removing Battery



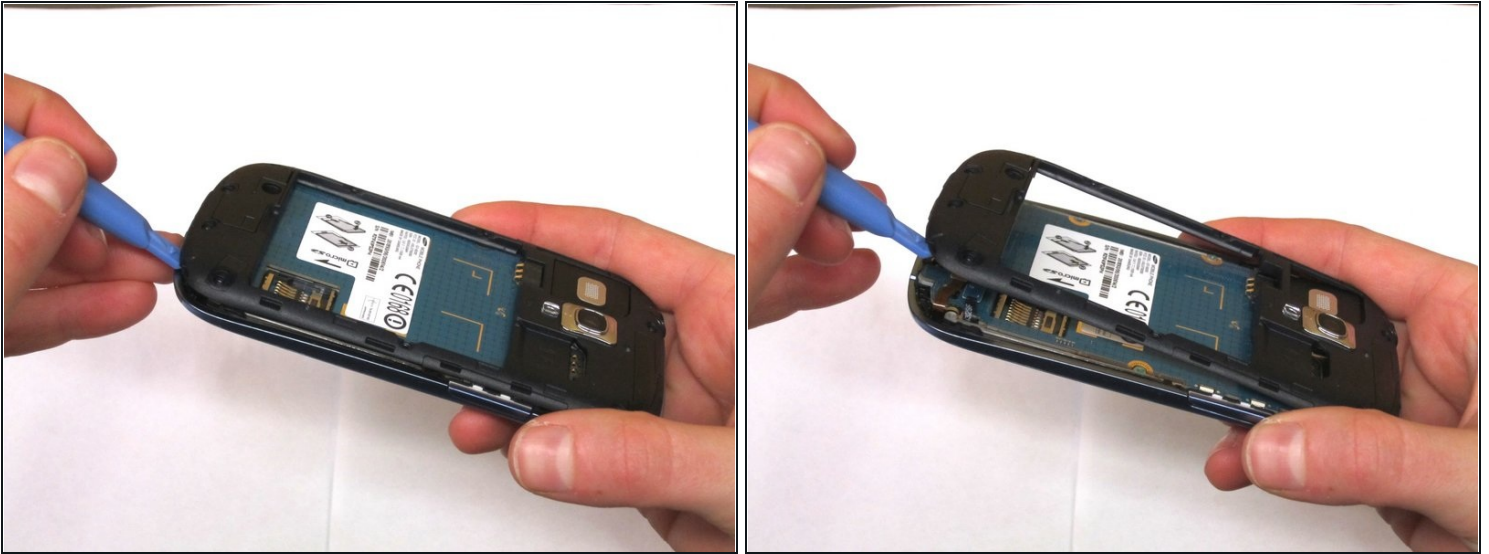
- Use your finger or an opening tool to pry the battery out of the phone.

Step 3 — Removing Screws



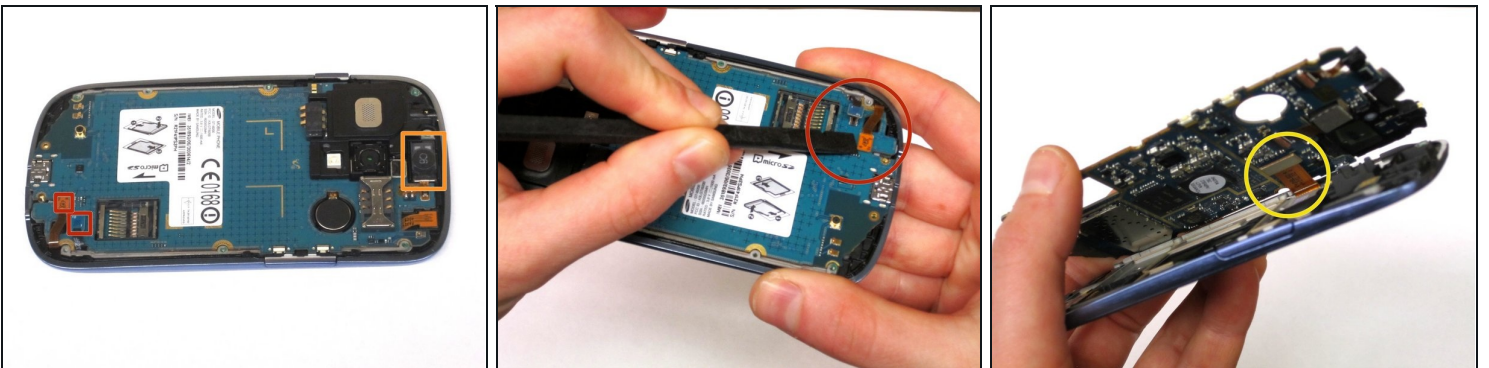
- Use the Phillips #000 Screwdriver to remove the 10, 4mm screws holding the plastic frame in place.

Step 4



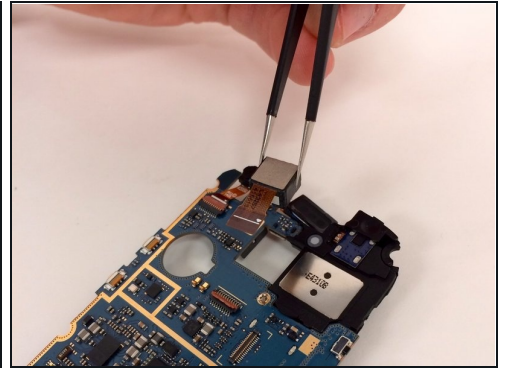
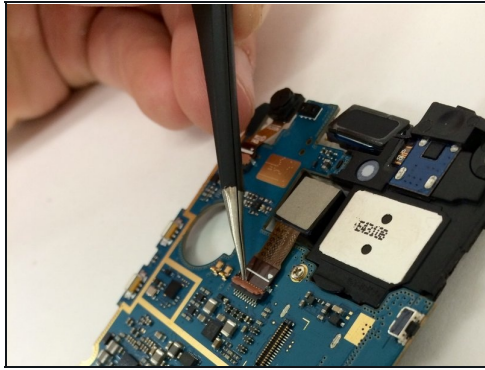
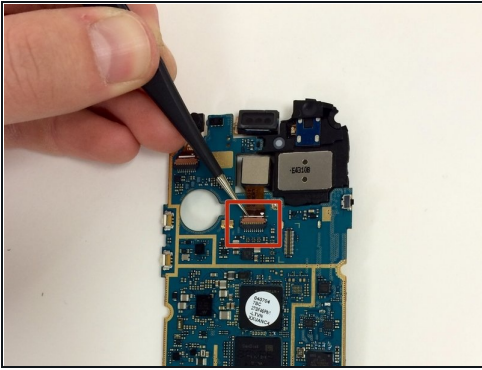
- Using an opening tool, gently separate the plastic framing from the phone.

Step 5 — Removing Circuit Board



- Unhook the two electrical connections at the bottom of the phone using your fingernail or a spudger.
- Next, use the spudger and [tweezers](#) to remove the speaker at the top of the phone.
- Once the 3 components have detached, the circuit board should release from the phone except for 1 connection on the underside.
- Detach this connection using the spudger.

Step 6 — Removing Camera



- Flip the holding tab to the open position.
- Gently, separate the rear camera and the motherboard.

To reassemble your device, follow these instructions in reverse order.