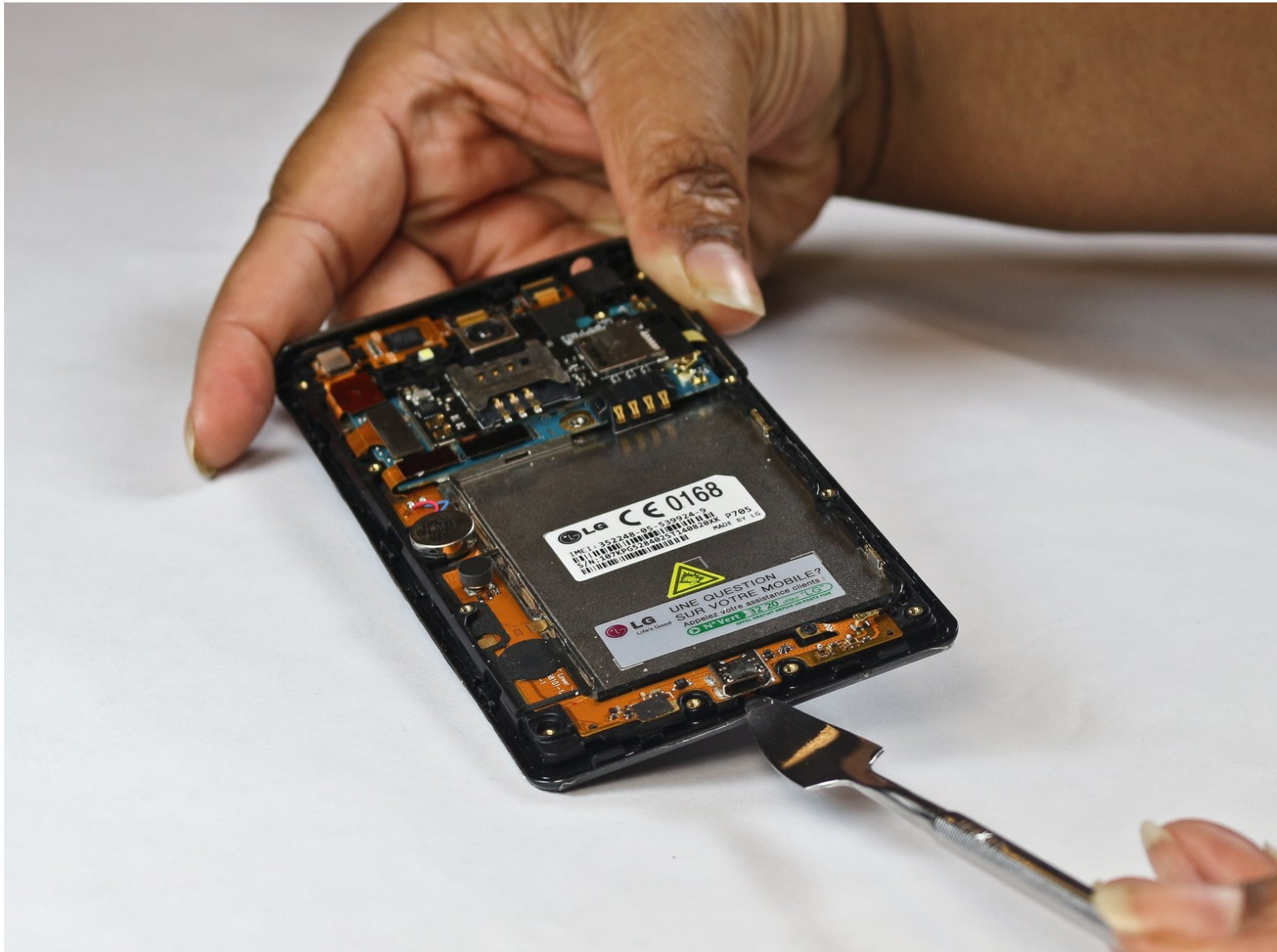




LG Optimus L7 P705 Charger Port Replacement

Replacing the charger port.

Written By: Bruna



INTRODUCTION

The following guide explains how to replace the charger port.



TOOLS:

- [iFixit Opening Tools](#) (1)
 - [Metal Spudger](#) (1)
 - [Phillips #000 Screwdriver](#) (1)
 - [Soldering Iron](#) (1)
-

Step 1 — Charger Port



- Remove back cover.
- Remove the battery and simcard.

Step 2



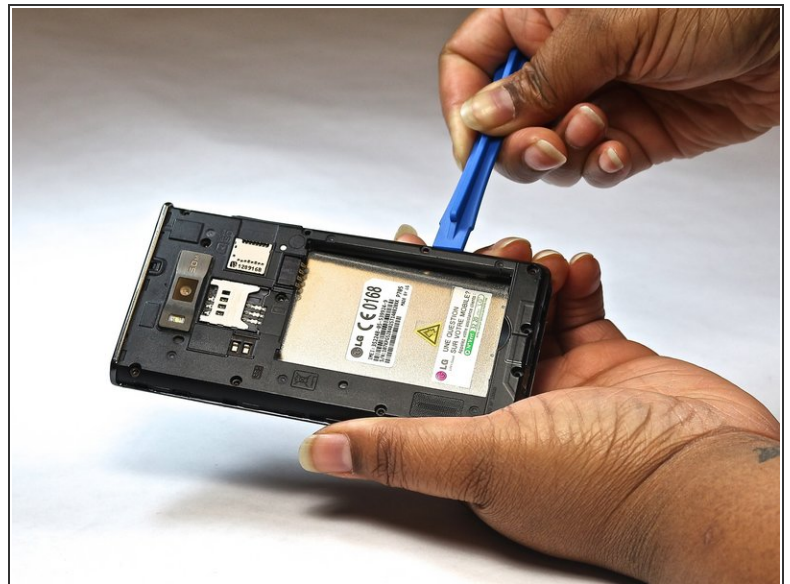
- Remove the 12 screws (with the phillips head 000) around frame and near sim and sd cards.

Step 3



- Remove bottom plate where the charger port is located.

Step 4



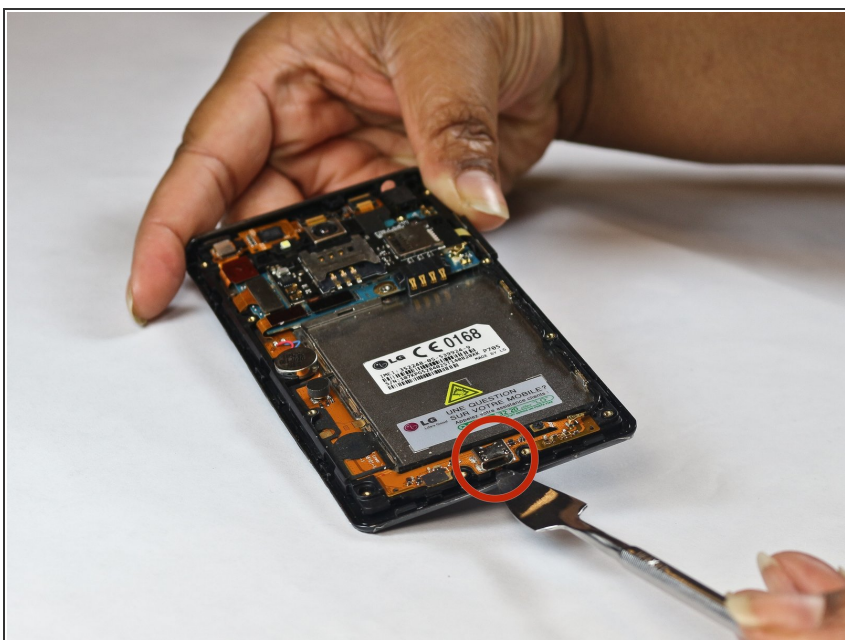
- Remove the back piece.

Step 5



- Using soldering iron, loosen the charger port from the bottom of the device.

Step 6



- Using a smudger, lift the charger port and replace as necessary.

To reassemble your device, follow these instructions in reverse order.