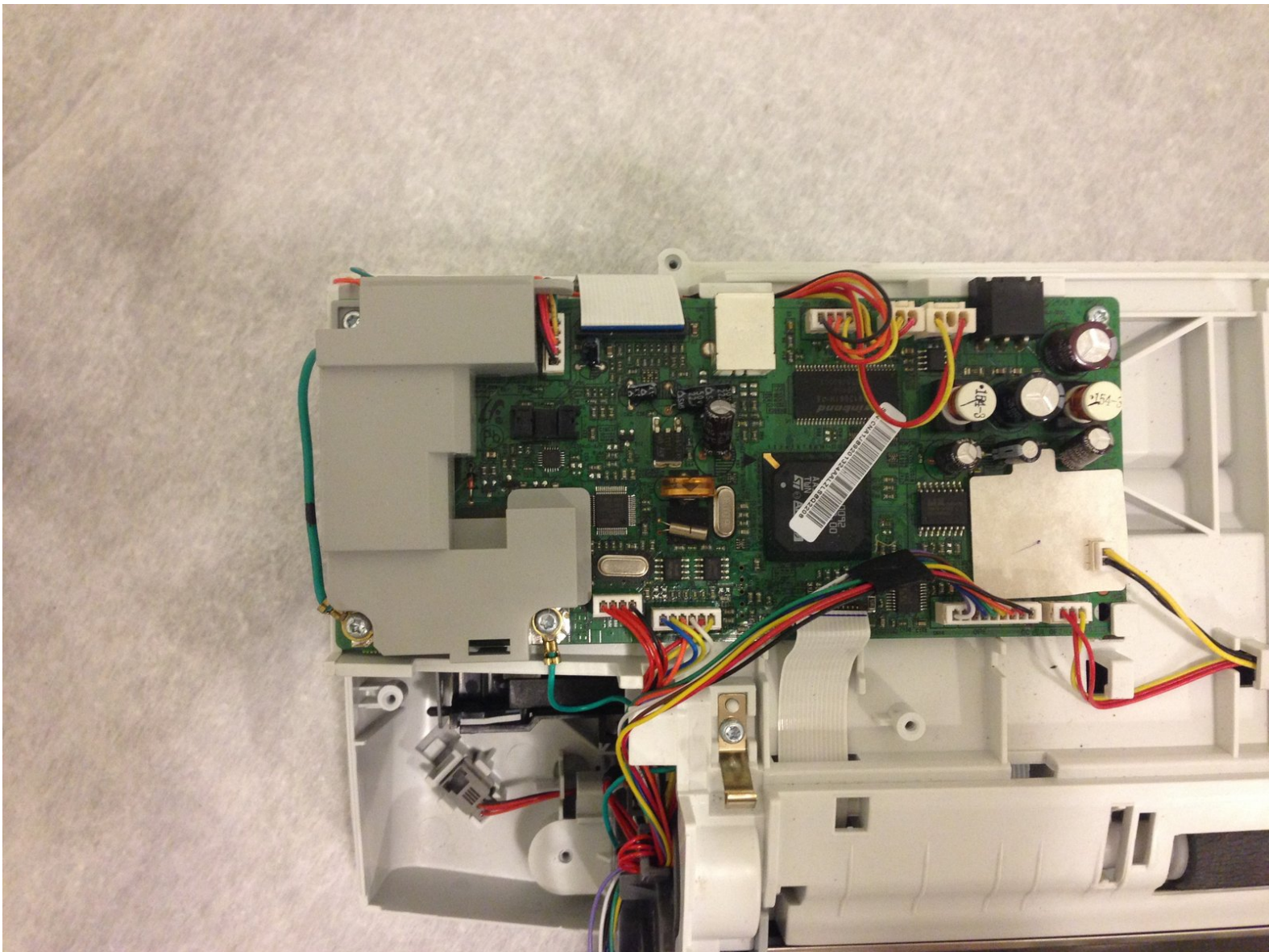




HP Officejet J3680 Motherboard Replacement

The main motherboard controls most aspects of the device.

Written By: Evan



**TOOLS:**

- [T10 Torx Screwdriver](#) (1)

**PARTS:**

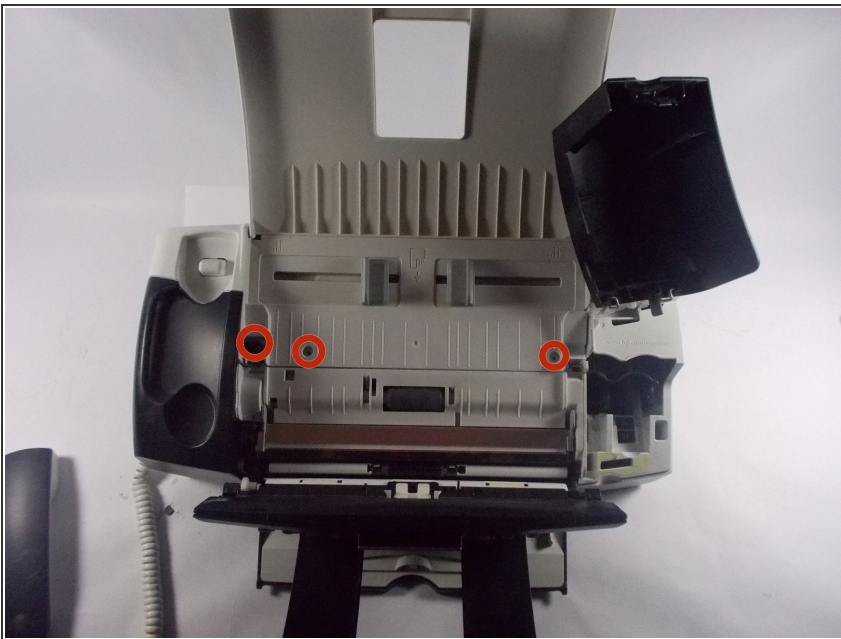
- [Main Motherboard](#) (1)

Step 1 — Unplug the Device



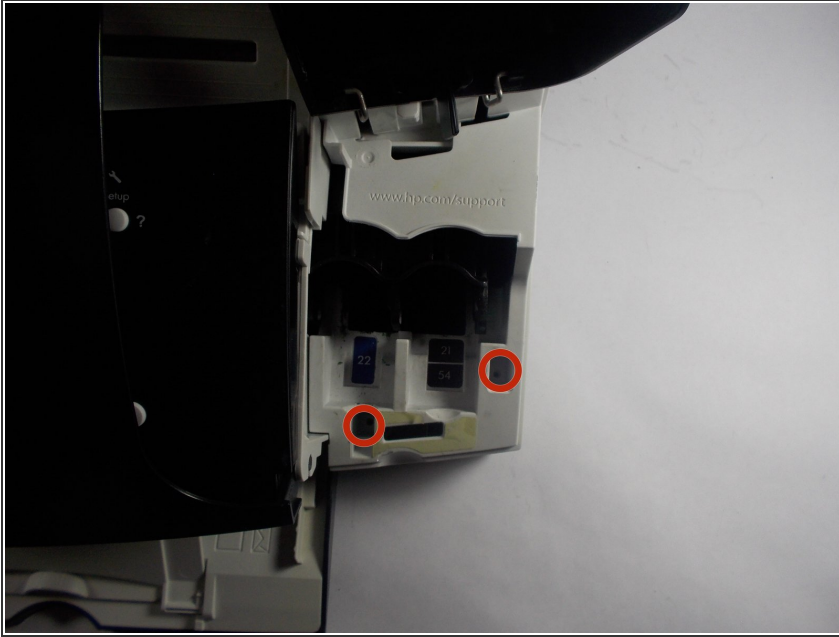
- Remove the plug from the outlet and from the back of the device
- Remove the USB Cable from your computer and from the back of the device.

Step 2 — Remove Screws From Under the Control Panel



- Using your Torx T10 screwdriver, remove the screws indicated in the picture. Screws are 13mm in length.

Step 3 — Remove Screws Underneath the Ink Cartridge Cover



- Using your Torx T10 screwdriver, remove the screws indicated in the picture. Screws are 13mm in length

Step 4 — Remove Screws from Underneath the Phone Panel



- In step 2, you removed the screw from the blue indicated area.
- Gently pop off the black cover that the phone rests on. Underneath this cover, you will find two more screws.
- Using your Torx T10 screwdriver, remove the screws indicated in the picture. Screws are 13mm in length

Step 5 — Remove the Screws from the Rear of Device



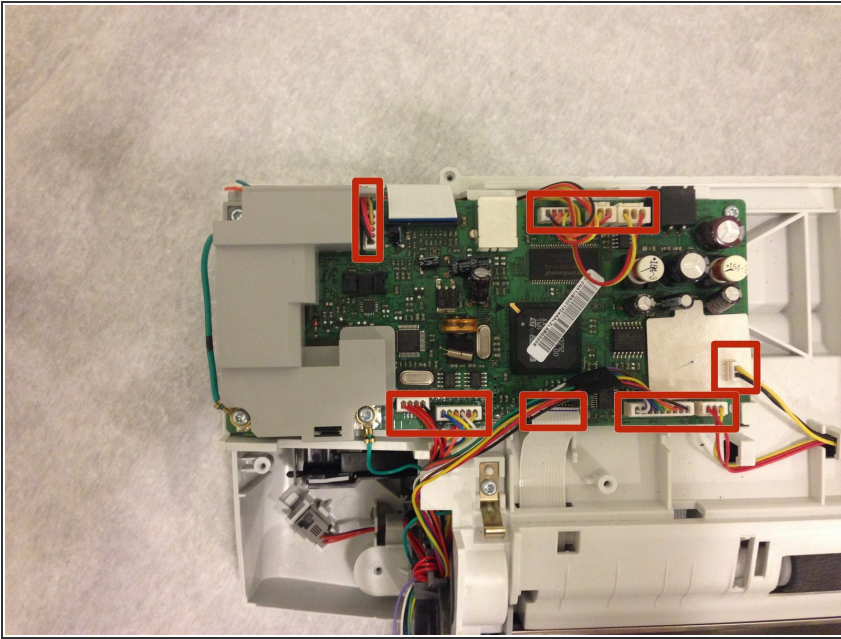
- Using your Torx T10 screwdriver, remove the screws indicated in the picture. Screws are 13mm in length.

Step 6 — Remove Rear Plastic Panel



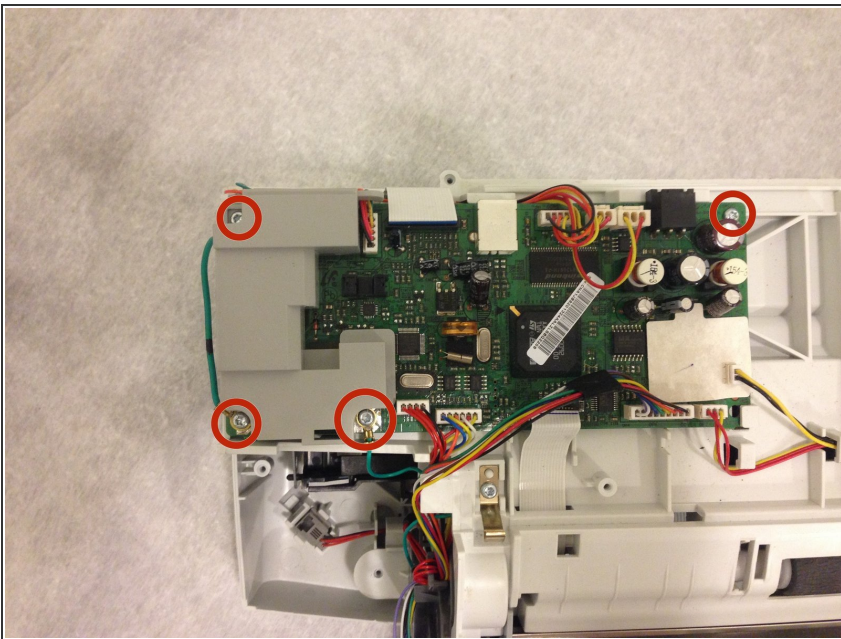
- Once the rear plastic panel has been removed, you are ready to replace and repair the necessary parts.

Step 7 — Remove Plugs from Main Motherboard



! Carefully unplug all of the plugs that are connected to the main motherboard indicating in the picture.

Step 8 — Remove Screws



- Using your Torx t10 screwdriver, remove the 4 screws that hold the main motherboard to the device. Screws are 13mm in length.
- Once removed, the main motherboard will be free from the device. You will notice that on the lefthand side, three of the screws hold down green wires. Make sure when replacing the motherboard that you screw these back into place.

To reassemble your device, follow these instructions in reverse order.