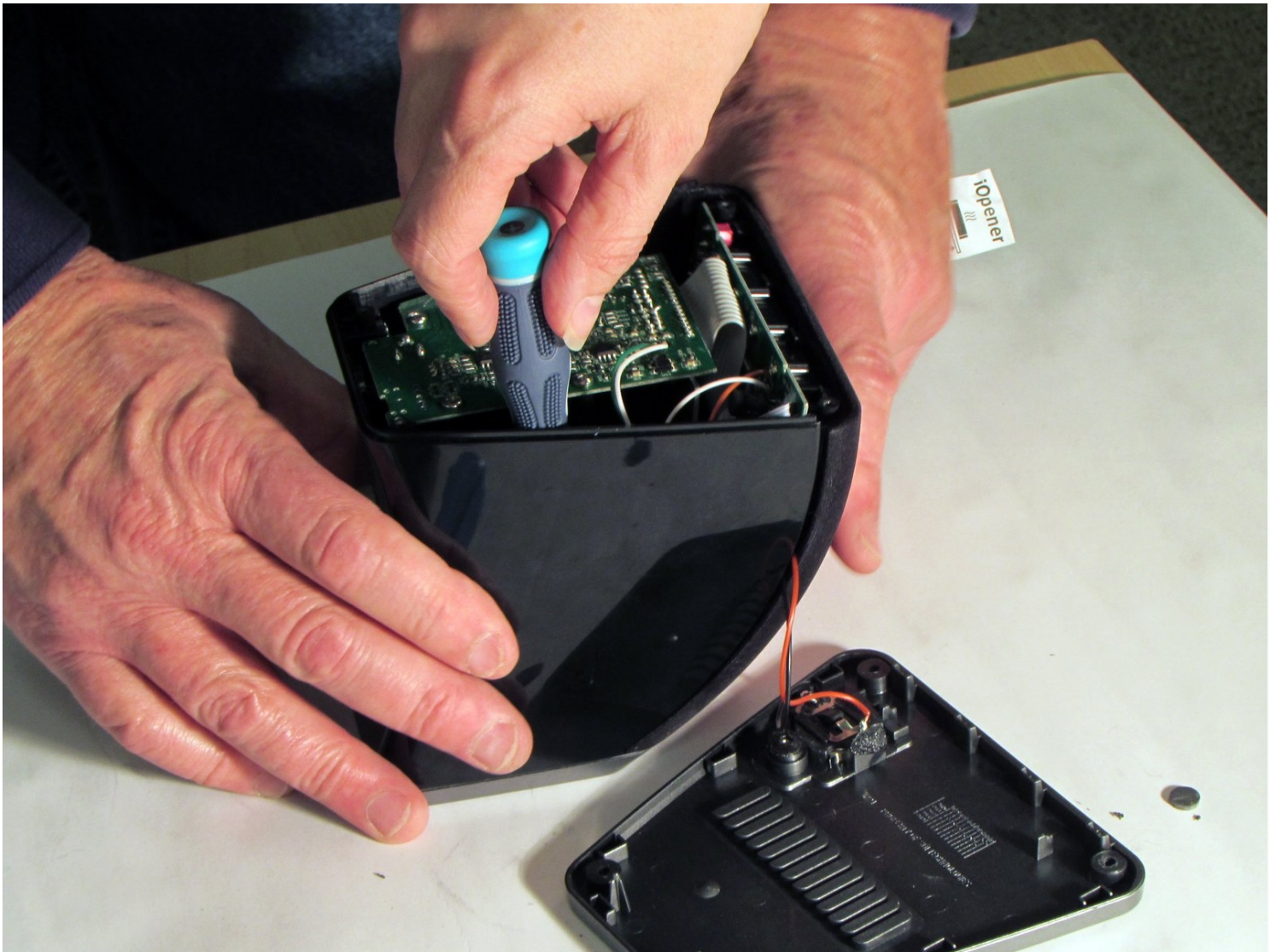




# iHome iP21 Motherboard Replacement

Written By: Brandy



---

## TOOLS:

Phillips #1 Screwdriver (1)

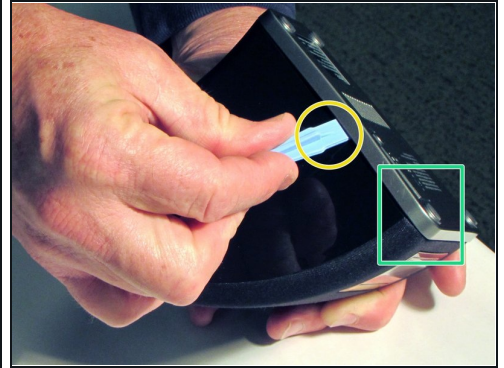
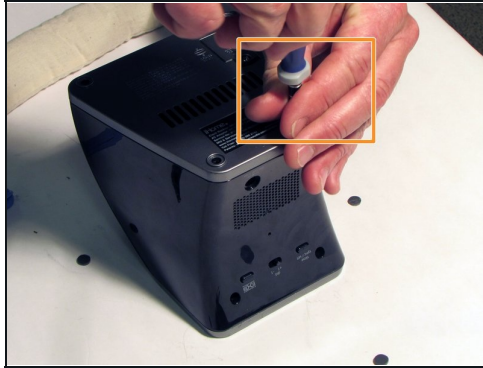
Phillips #2 Screwdriver (1)

Spudger (1)

Soldering Iron 60w Hakko 503F (1)

---

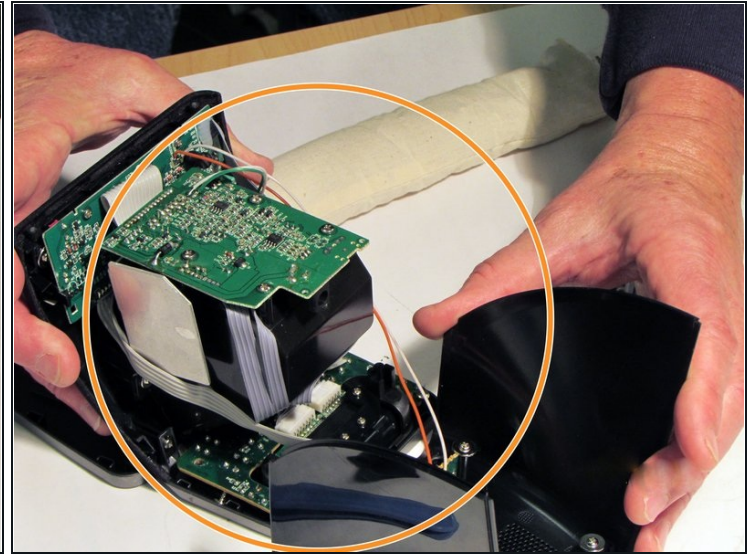
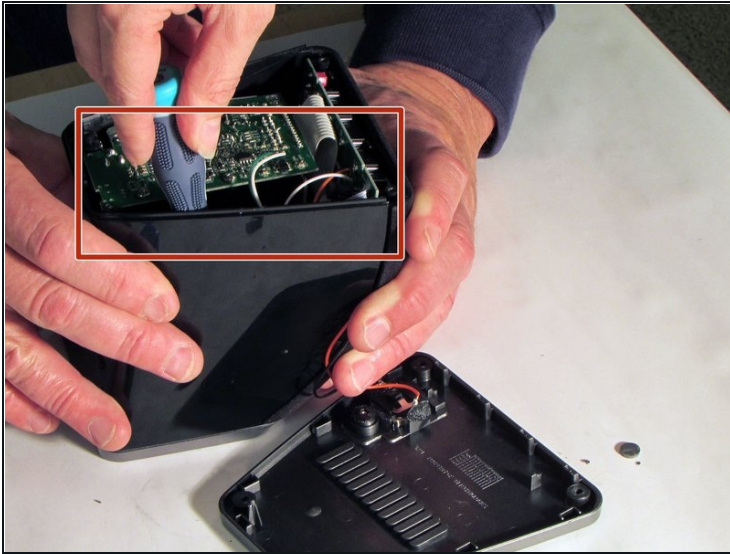
### Step 1 — Base



- Pry the four rubber feet from the bottom of the iP21 to expose four 11mm screws.
- Unscrew the four 11mm screws from the base.
- Pry the base loose using the spudger.
- Remove the base by hand.



## Step 2 — Housing



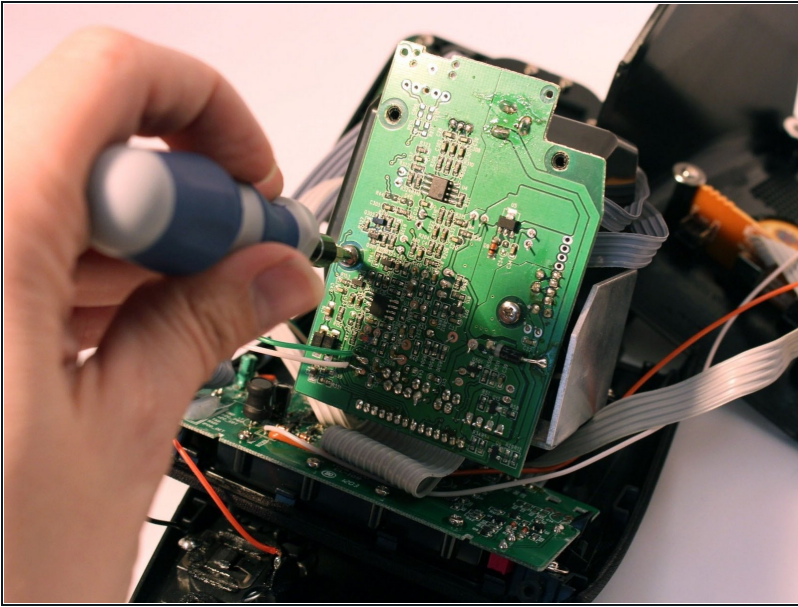
- Remove the two black 6mm screws connecting the main circuit board to the housing top.
- Gently pull front housing from the back housing.

## Step 3 — Circuit board



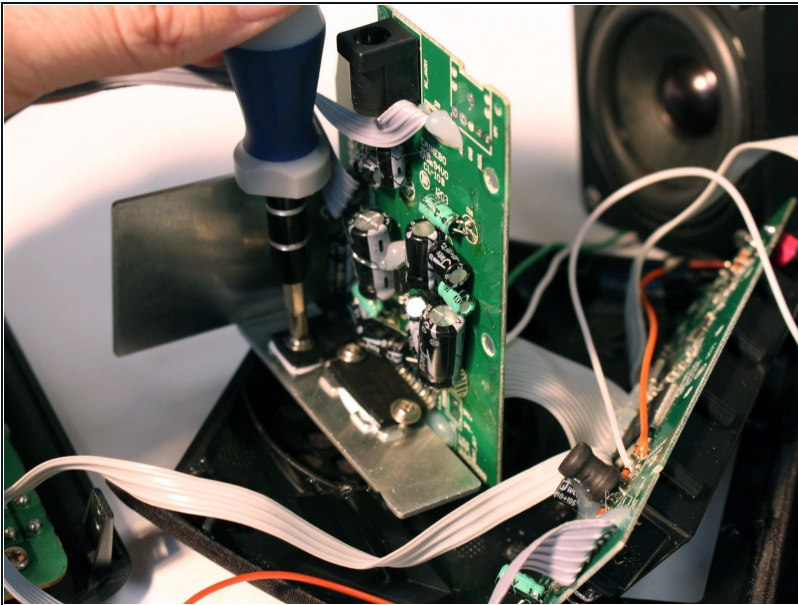
- Follow the prerequisite guide to remove the main housing.

## Step 4 — Circuit board mount



- Remove the two 7mm screws from the circuit board

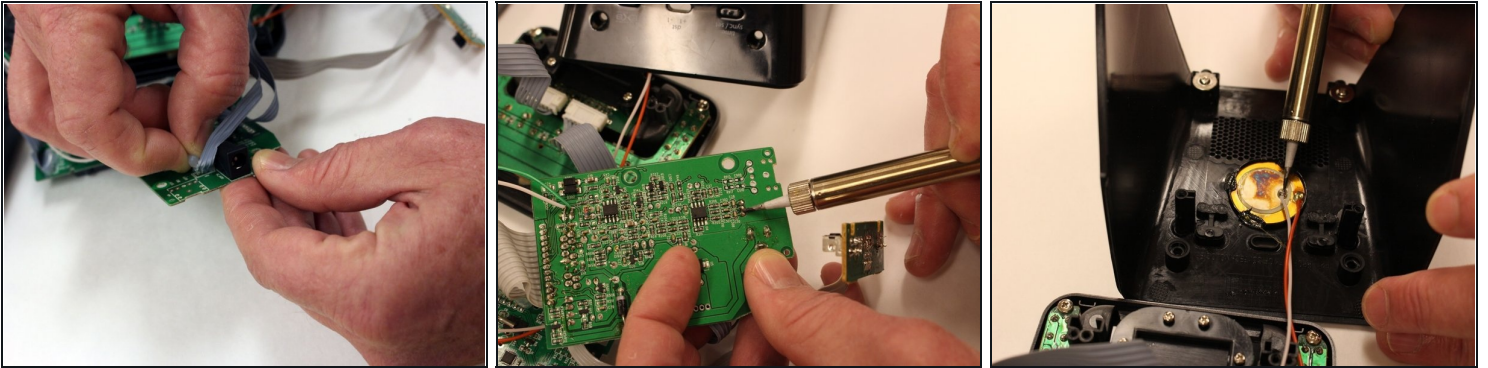
## Step 5 — Mounting Bracket



- Remove the three 6mm screws to detach the circuit board from metal mounting bracket.

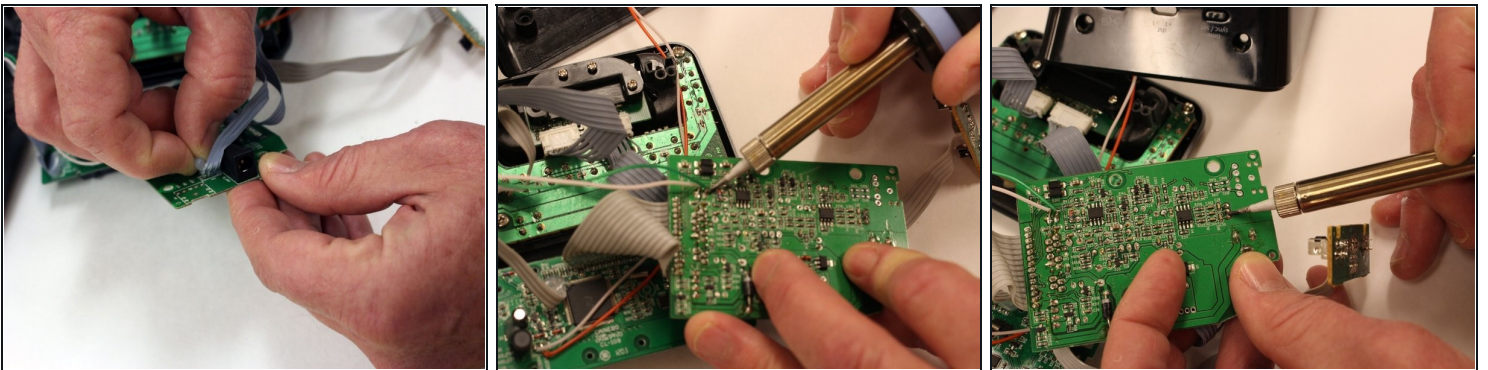


## Step 6 — Cables



- Peel the glue from each of the three ribbon cable connections.
- Remove the solder joints from the back of each ribbon cable.
- Remove the ground wires by removing the solder joints on the back of the housing.

## Step 7 — Detach cables from circuit board



- Remove glue from 3 ribbon cables from circuit board using fingers
- Detach speaker cables from circuit board with soldering iron
- Remove 3 ribbon cables with soldering iron

---

To reassemble your device, follow these instructions in reverse order.