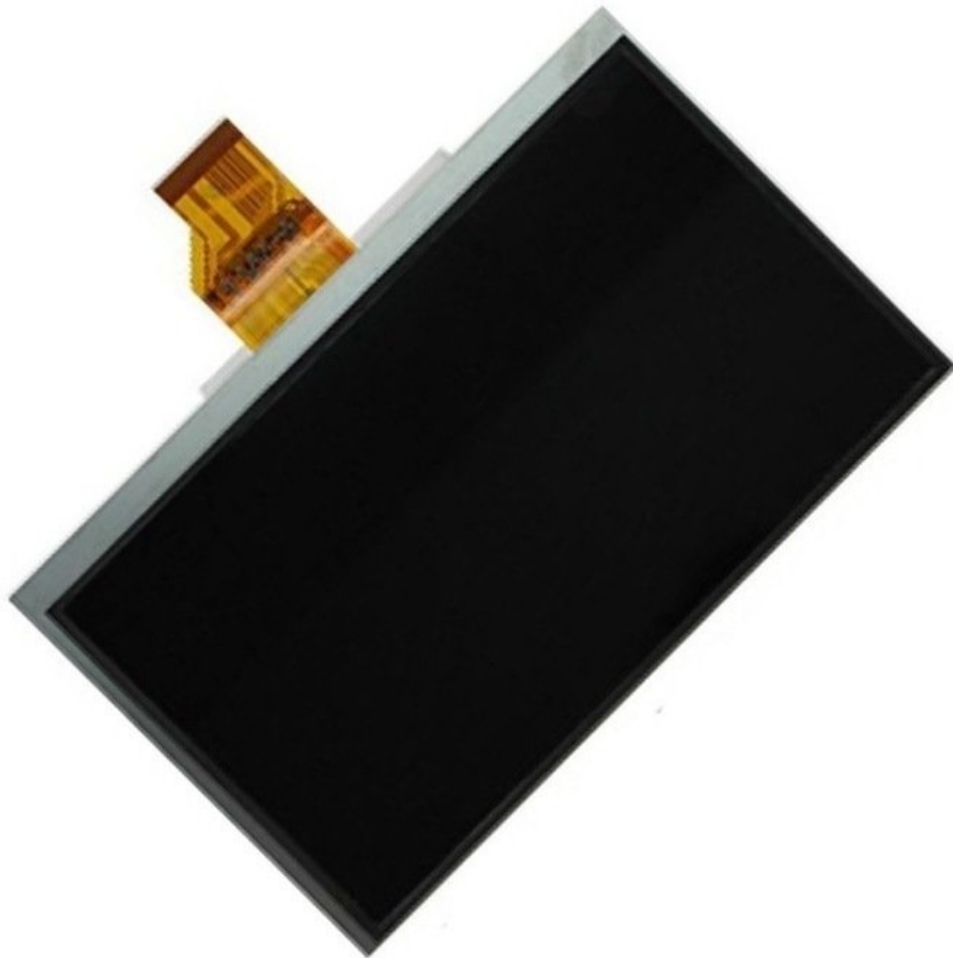




Acer Iconia B1-711 LCD Display Replacement

Acer Iconia B1-710 B1-711 LCD Display Replacement

Written By: ZFix



INTRODUCTION

Acer Iconia B1-710 B1-711 - How to disassemble, take apart the device and replace the broken screen.

[Please SUBSCRIBE to my channel ツ](#)

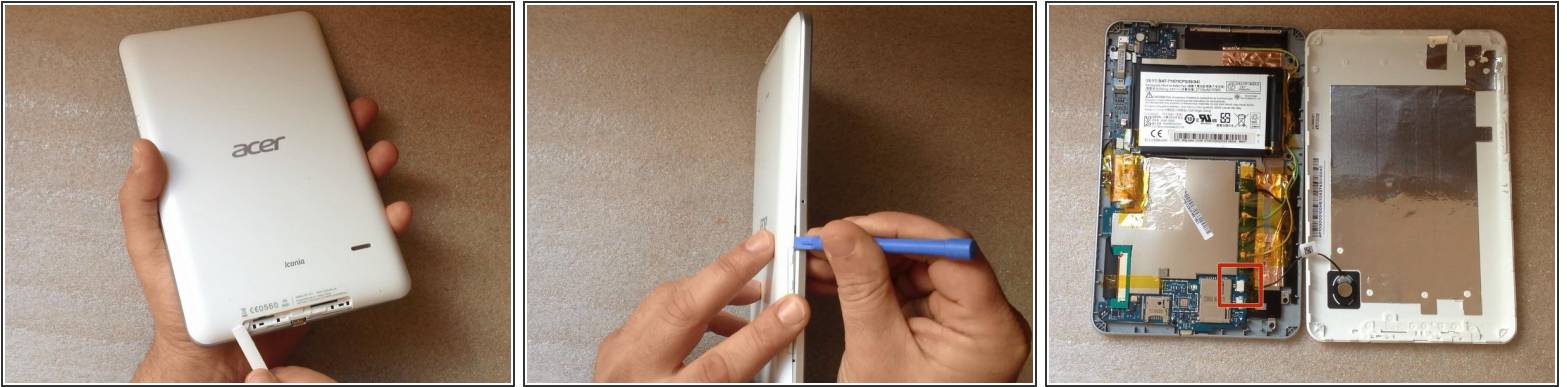
[video: <https://www.youtube.com/watch?v=8-djJ2aXa60>]



TOOLS:

- [Tweezers](#) (1)
 - [Phillips #0 Screwdriver](#) (1)
 - [iFixit Opening Tools](#) (1)
 - [Spudger](#) (1)
-

Step 1 — Back Cover



- Switch-off the tablet.
 - Remove any SIM and/or Memory Card.
 - Start opening near to the Volume Up/Down buttons. It's more well to use a plastic opening tool to avoid damaging the cover.
- ⚠ When lifting the cover, be careful not to tear the Loudspeaker cable at the bottom right side.
- Disconnect the Loudspeaker cable from the Logic board.

Step 2



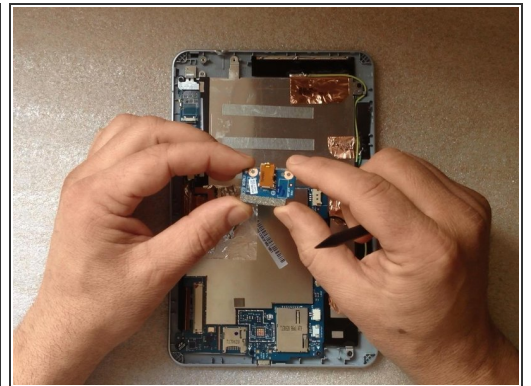
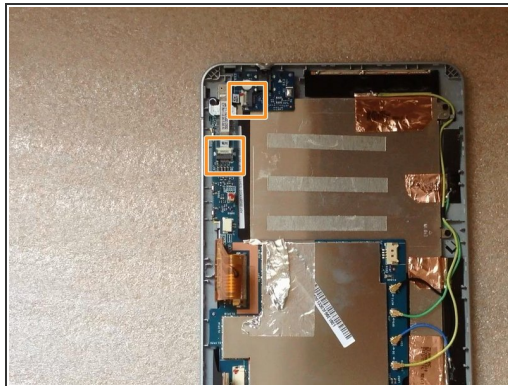
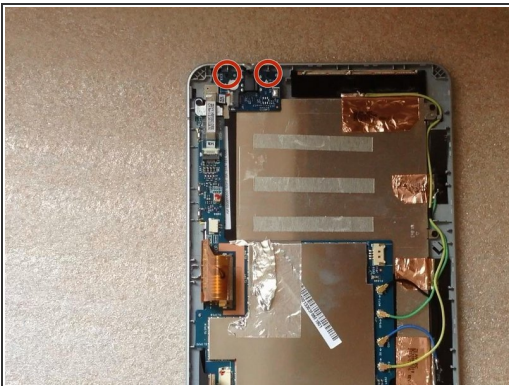
- Before doing anything, disconnect the battery.

Step 3 — Battery



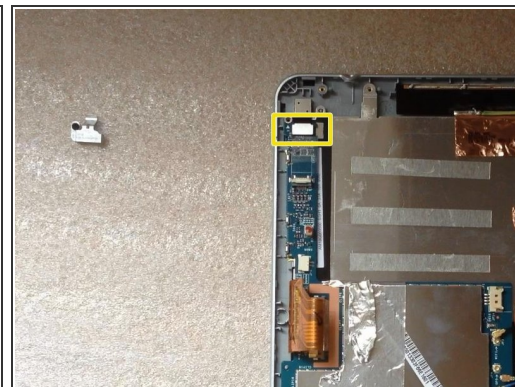
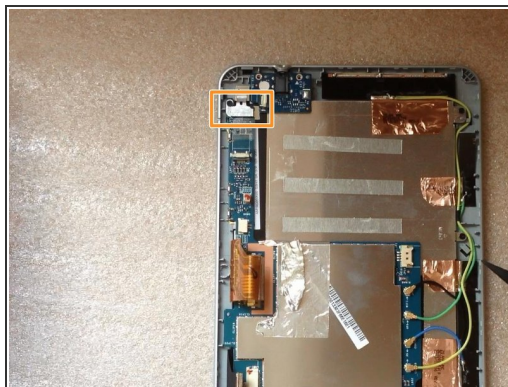
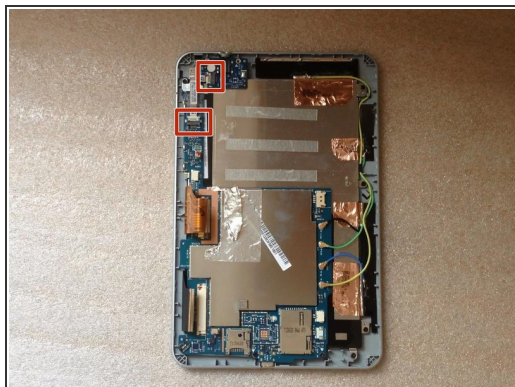
- With a long plastic tool like a spudger, unstick the battery from the metal LCD shield.
- Lithium Ion Battery Pack - 3.8V, 2710mAh

Step 4 — Audio Jack Connector



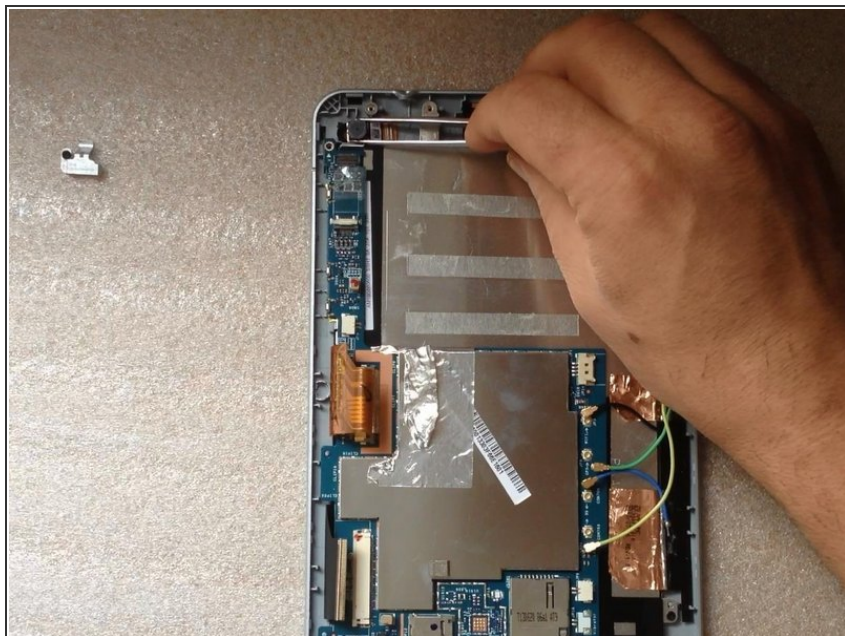
- Unscrew 2x Philips screws
- Disconnect and remove the Audio Jack Board flex cable.
- Remove the board with the Audio Jack Connector.

Step 5 — Camera



- Remove the Audio jack flex cable.
- Remove the metal plate which is placed on the camera connector.
- Disconnect the camera flex cable.

Step 6



- Remove the camera.

Step 7 — Microphone



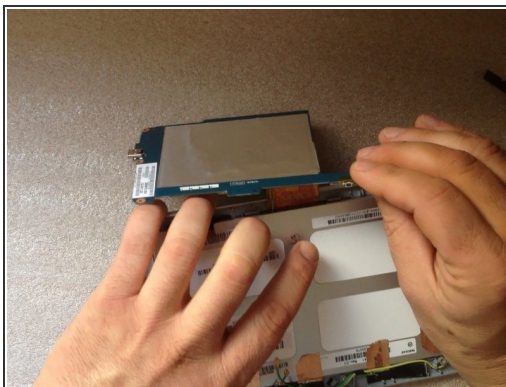
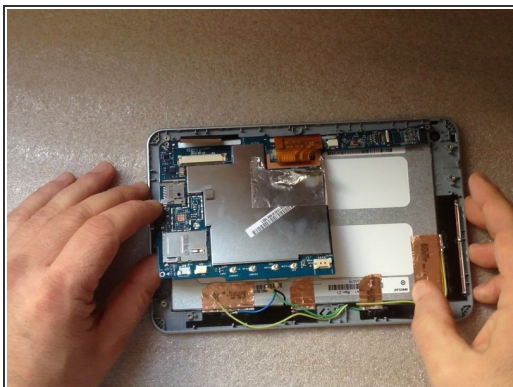
- Remove the tape from the microphone.
- Disconnect the Microphone wires and remove the Microphone.

Step 8 — Logic Board



- Remove the green rubber and disconnect the touch screen flex cable.
- Disconnect the 4 coaxial antenna cables (Wi-Fi, GPS, 3G).
- Carefully unstuck the metal folio from the LCD display flex cable.
- Remove the 3x Phillips screws.

Step 9



- Lift the board from the side of the battery connector and turn it around the display connector on 360 degrees.

⚠ Be careful for the flex cable!

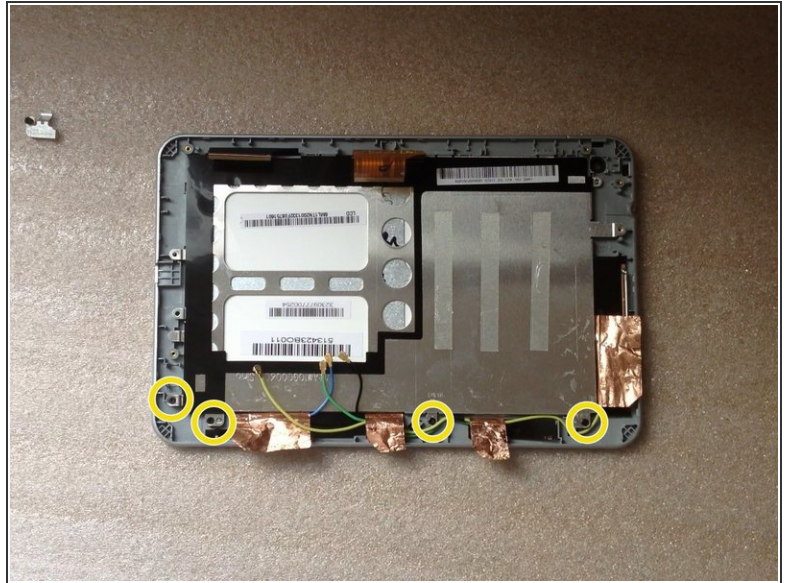
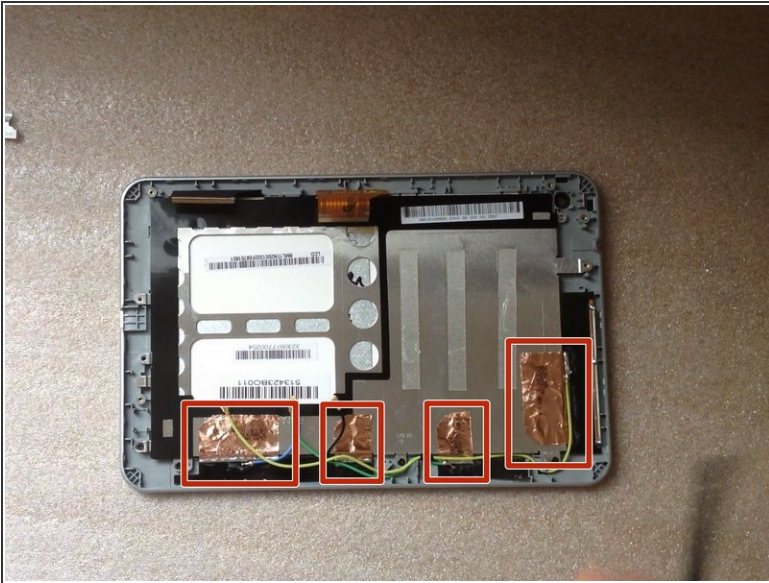
- Disconnect the LCD display flex cable.

Step 10



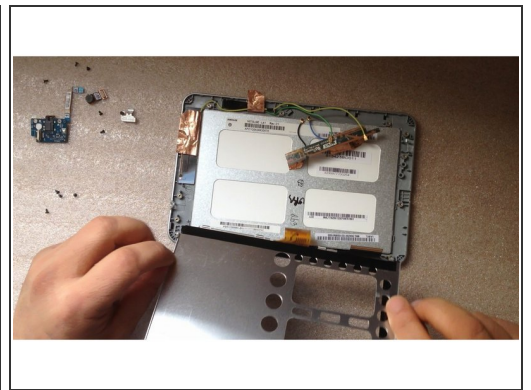
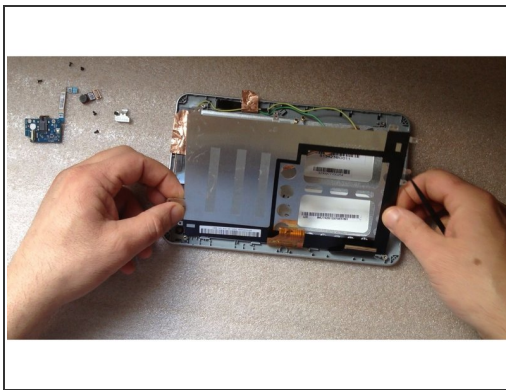
- This is the Logic board.

Step 11 — LCD Display



- Careful unstuck the metal folio from the screen shield.
- Remove the 4x Phillips screws.

Step 12



- lift the screen shield from one side and open it like a door, then remove it.

Step 13



- The LCD display is held from the metal screen frame by several locking clips.
- Very careful using a tool with sharp edge, release the screen from the one side.

Step 14



- Lift the display up and remove it.

To reassemble your device, follow these instructions in reverse order.