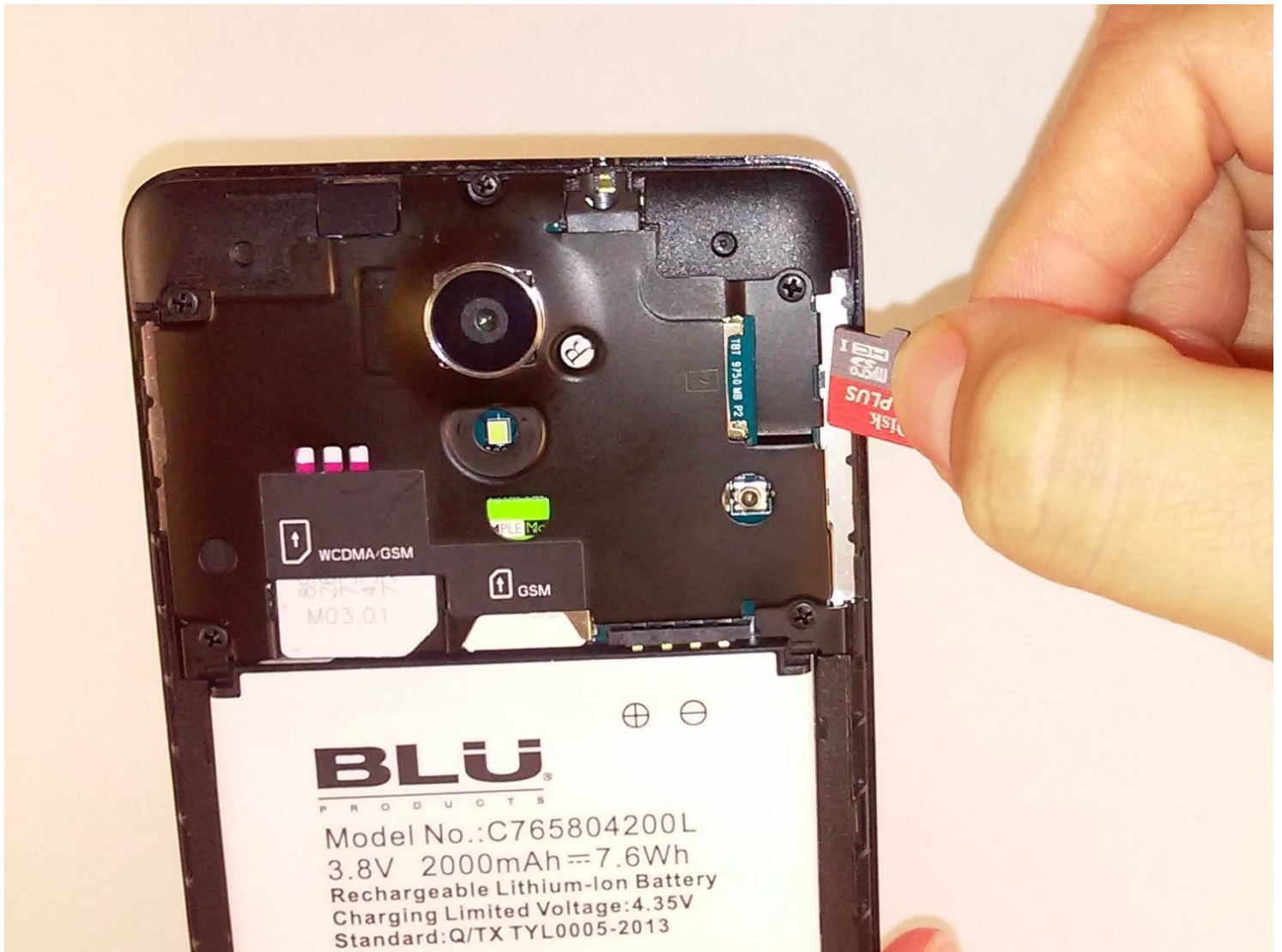




Blu Studio 5.0 S II MicroSD Card Replacement

This guide will show you how to replace the...

Written By: Sandra Estevane



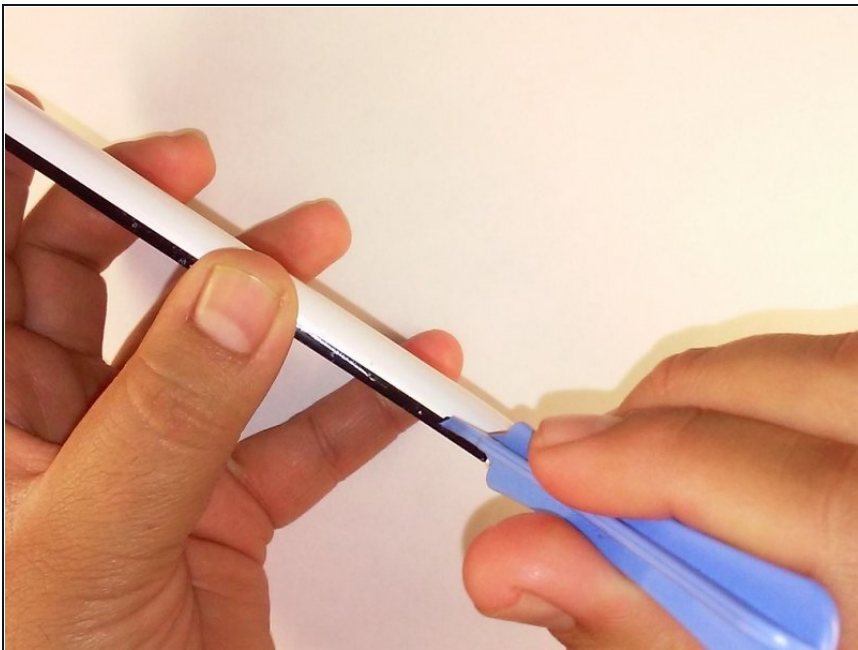
INTRODUCTION

This guide will show you how to replace the memory card of the Blu Studio 5.0 S II.

TOOLS:

[iFixit Opening Tool](#) (1)

Step 1 — Remove back cover



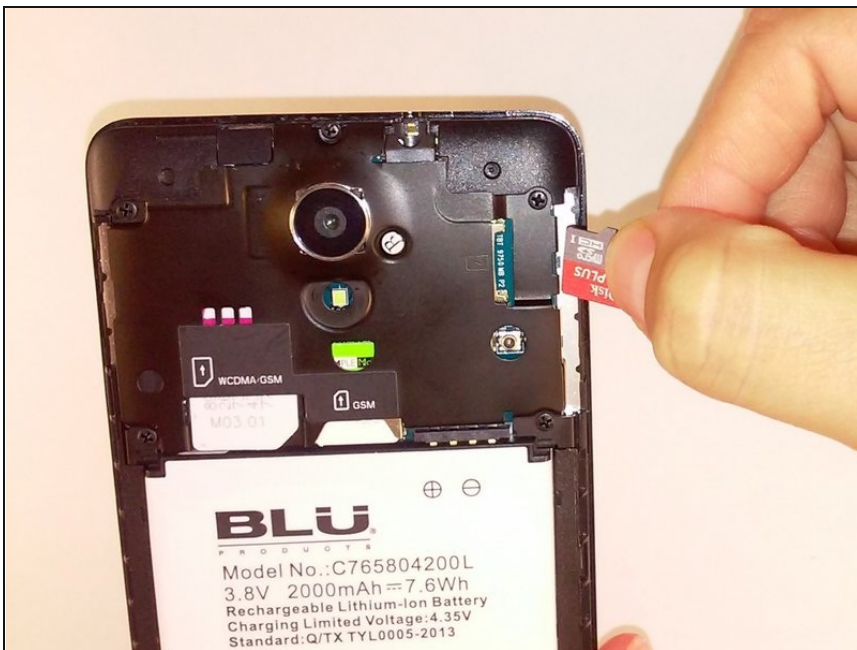
- Remove the back cover of the phone with the plastic opening tool.

Step 2 — Remove memory card



- Using a pair of [tweezers](#) or your fingers, gently pull out the memory card.

Step 3 — Insert new memory card



- Replace the old memory card by inserting new memory card.

To reassemble your device, follow these instructions in reverse order.

