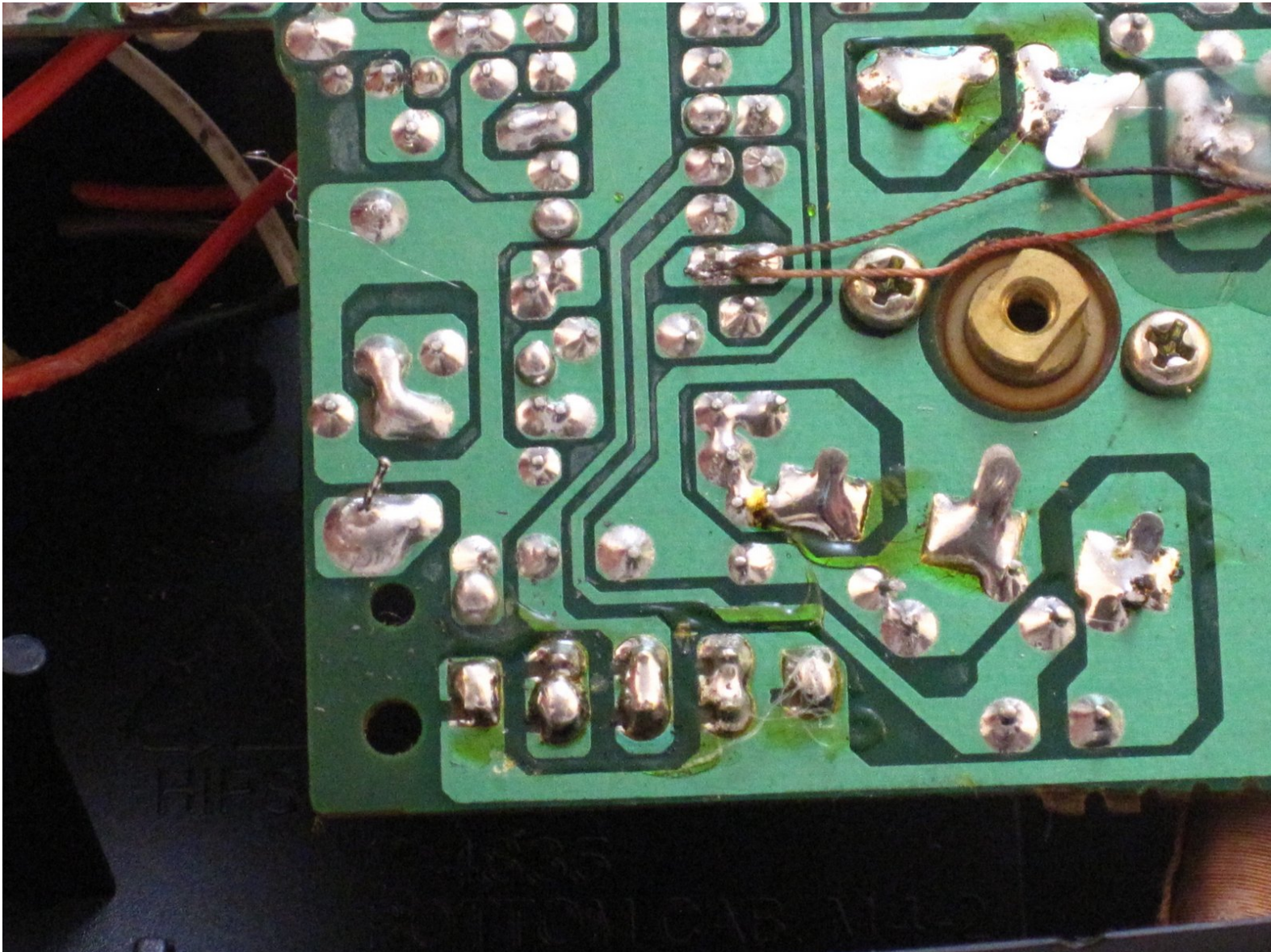




# GE 7-4836B Alarm Clock AM-FM Radio AM-FM Switch Replacement

This guide will show you how to remove the two-position AM-FM switch so that you can replace it.

Written By: Dominick Giguere



---

## INTRODUCTION

This guide involves further disassembly of the clock radio and will require using several different tools and techniques, including using a soldering iron. If you need help on how to use a soldering iron, consult this iFixit guide: [How To Solder and Desolder Connections](#)

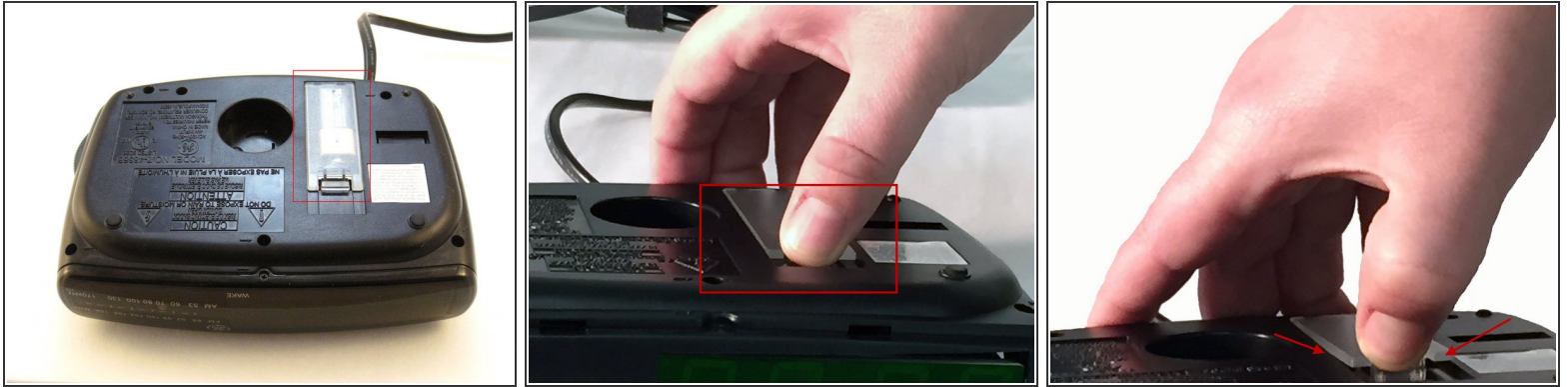


### TOOLS:

- [Phillips #00 Screwdriver](#) (1)
  - [Phillips #1 Screwdriver](#) (1)
  - [Portable Soldering Iron](#) (1)
  - [Spudger](#) (1)
-

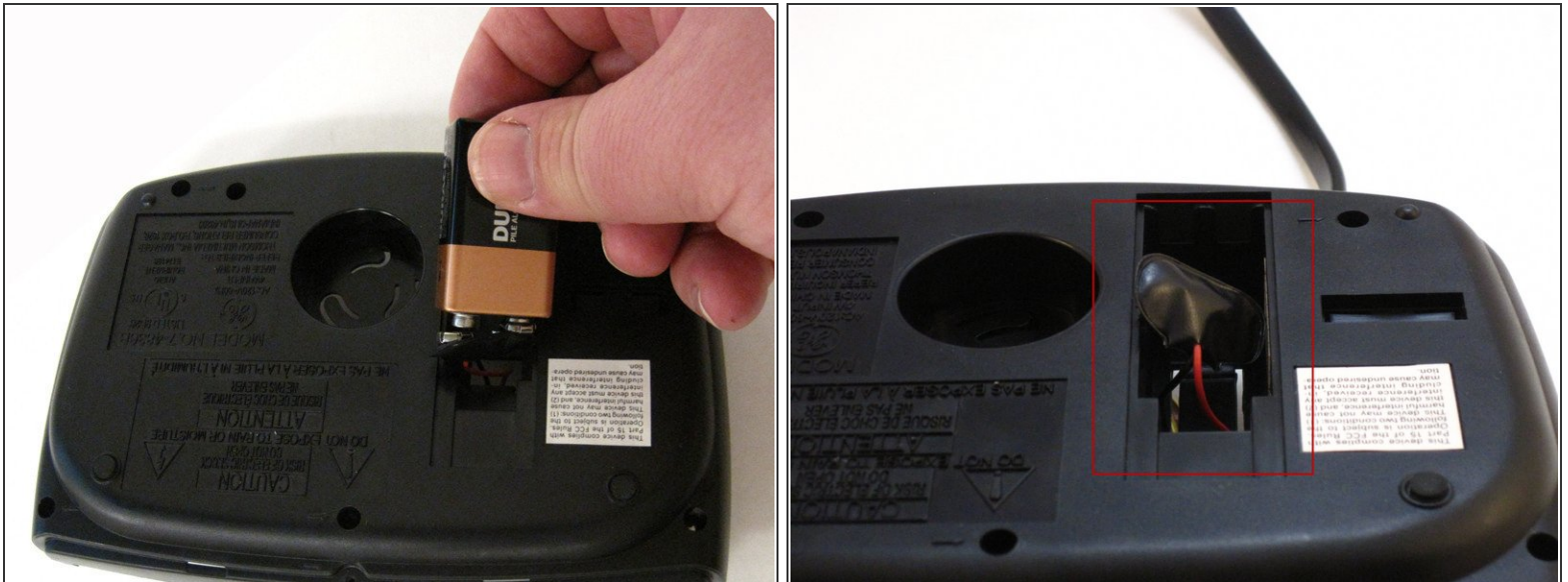


## Step 1 — Battery Compartment Cover



- Find the battery compartment on the bottom of the clock radio.
- Using your thumb, push the compartment cover latch toward the battery.
- With the latch pushed in, pull the compartment cover upward to remove it..

## Step 2 — Battery



- Lift the battery from the compartment.
- Pull the battery up and gently disconnect it from the battery connector.

## Step 3 — Screws



- Using a Phillips #00 Screwdriver, unscrew the six 12mm screws from around the bottom of the clock radio.

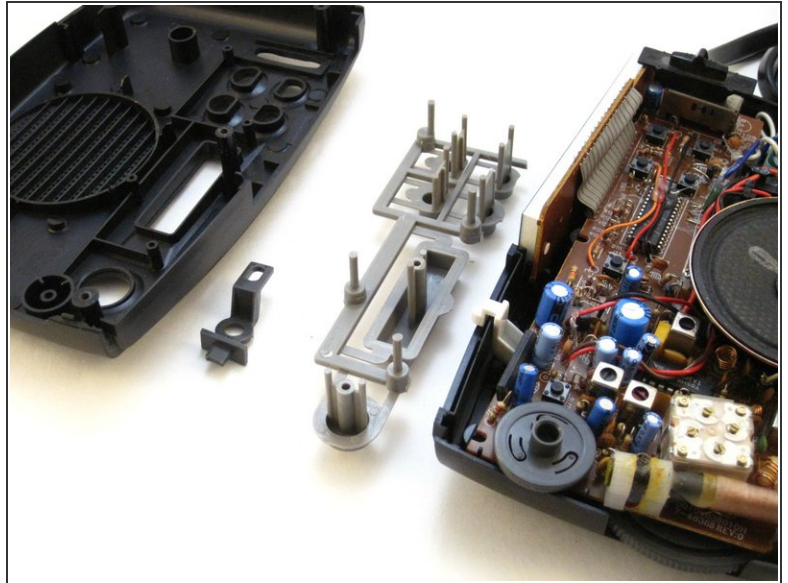
## Step 4 — LCD Cover



- Gently pull the liquid crystal display (LCD) cover off.

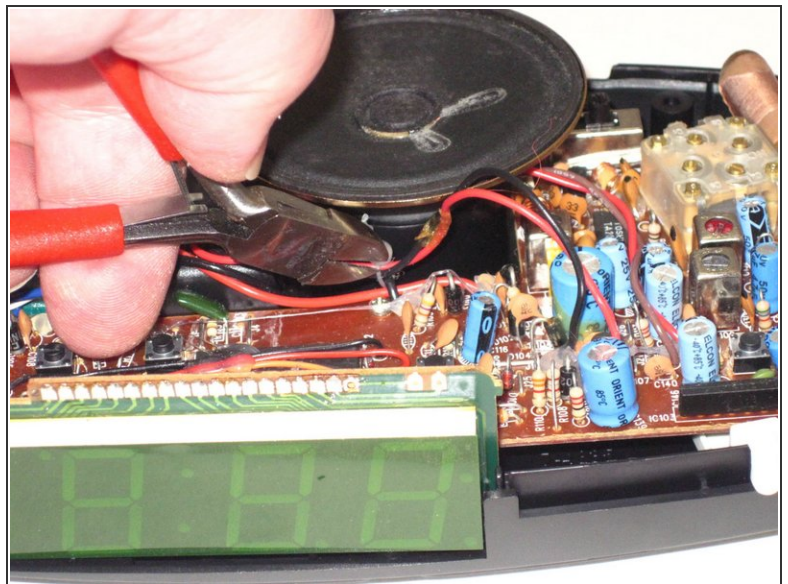
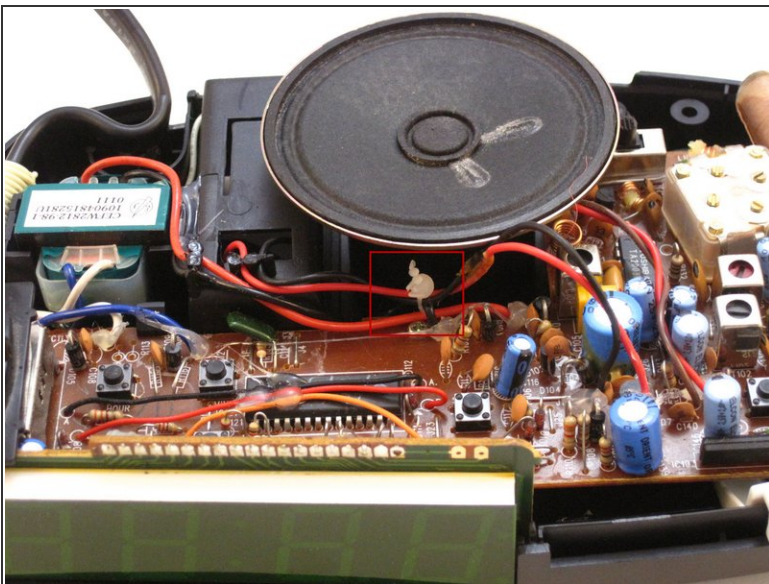


## Step 5 — Clock Radio



- Lift the top off. Two gray, plastic internal pieces will fall out when you do this; set them aside.

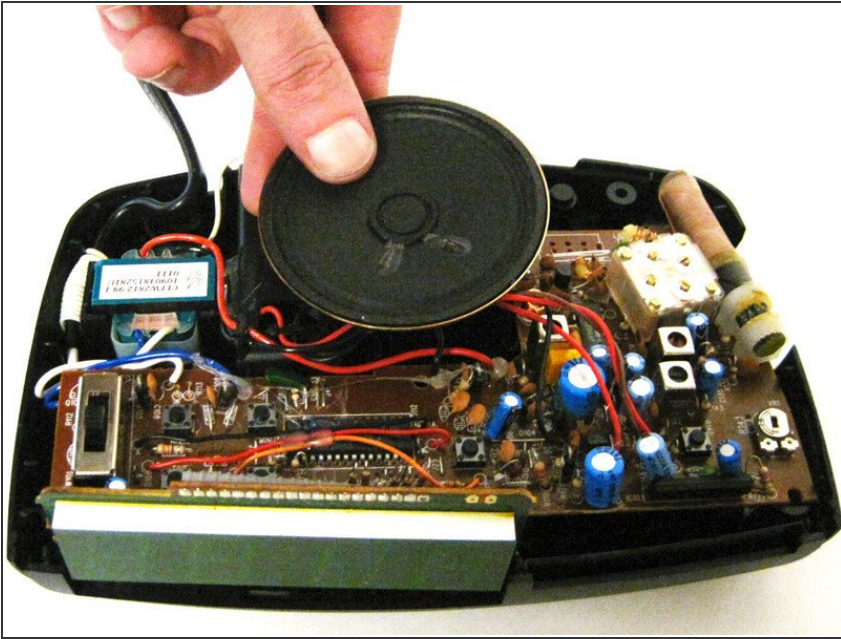
## Step 6 — Battery Wires Wire Tie



- Using the wire cutters, carefully cut the plastic wire tie.

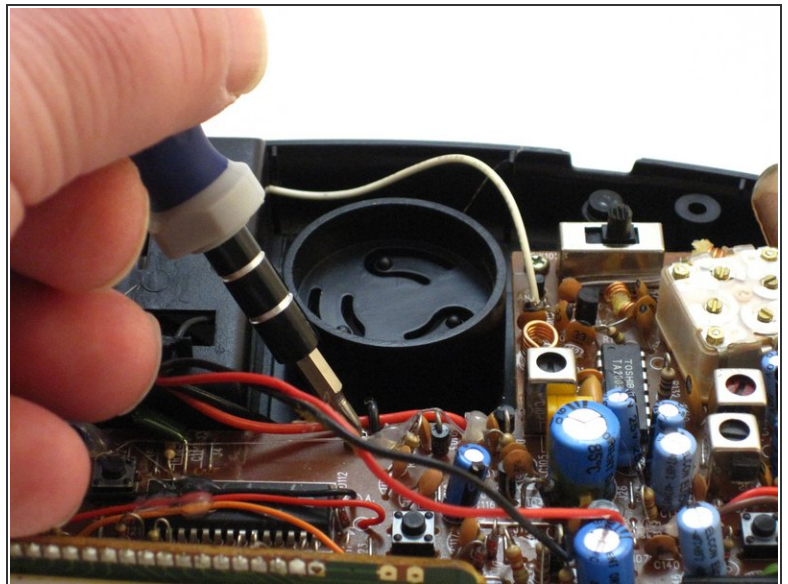
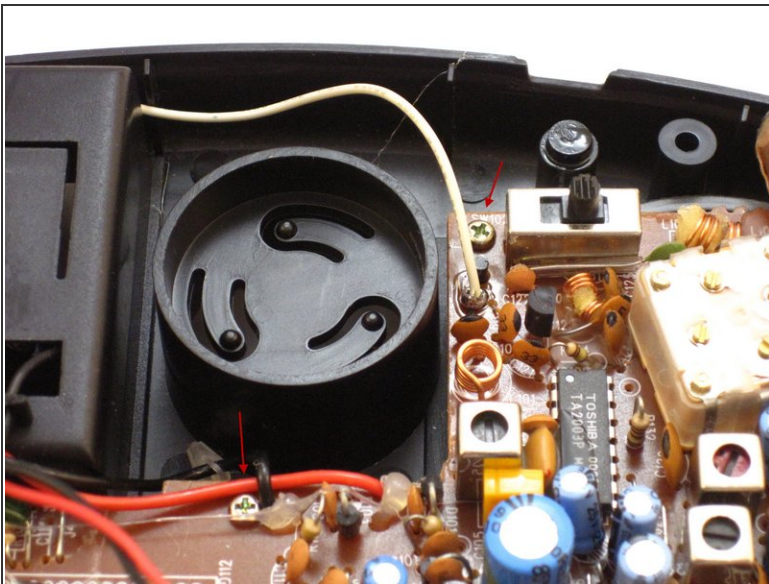


## Step 7 — Speaker



- Grip the speaker.
- Lift the speaker from the holder.

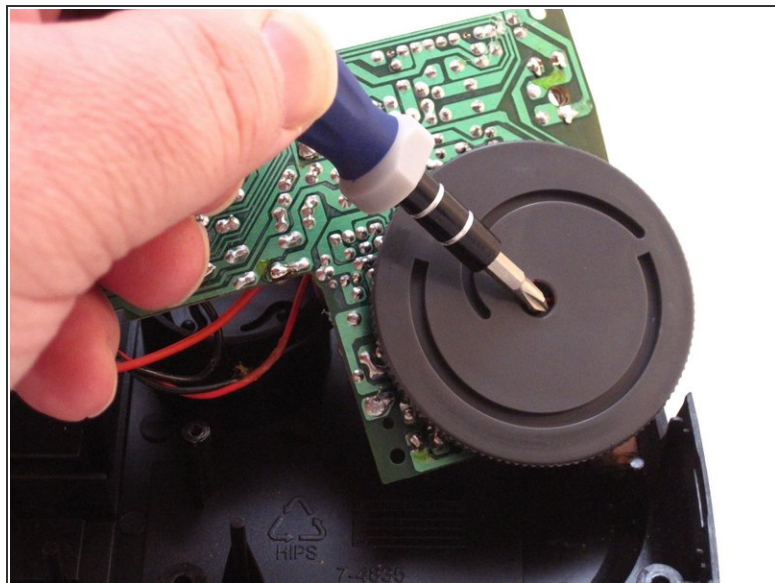
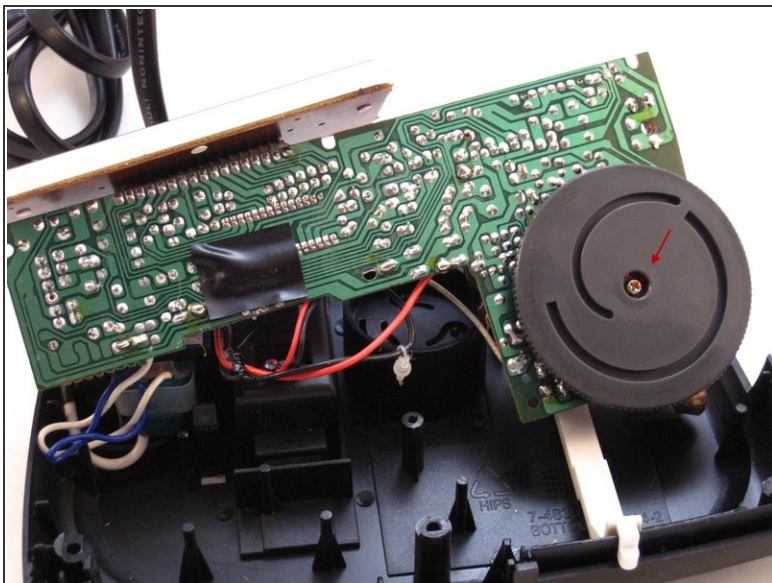
## Step 8 — Screws



- Locate the two 6mm screws on the PCB.
- Using a Phillips #0 Screwdriver, unscrew the two 6 mm screws from the PCB.

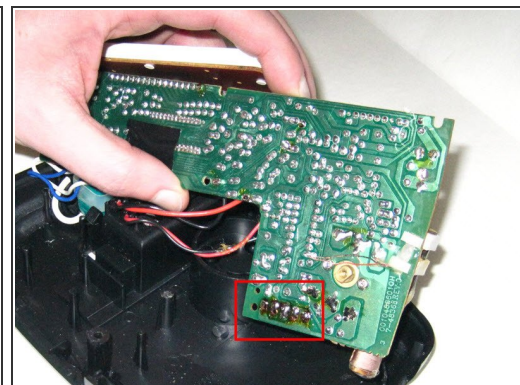
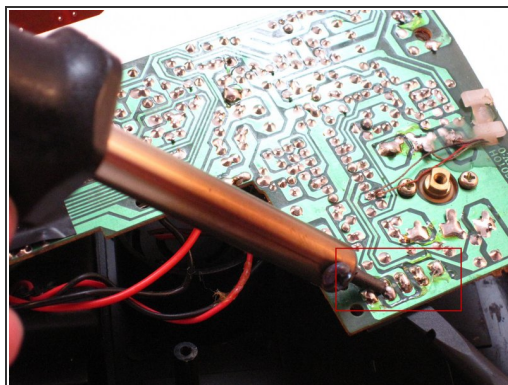
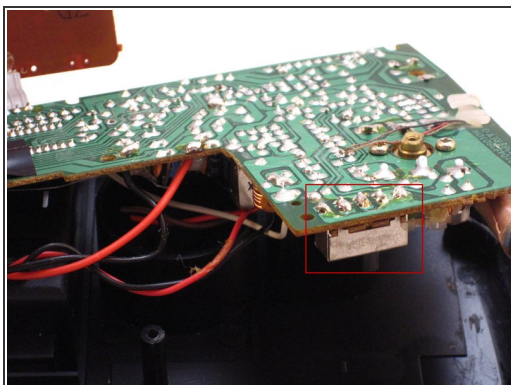


## Step 9 — AM-FM Switch Dial Screw



- Raise the PCB to expose the AM-FM switch dial screw.
- Using a Phillip's #01 Screwdriver, unscrew the one 3mm screw from the middle of the AM-FM switch dial.

## Step 10 — AM-FM Pins



- Locate the AM-FM pins on the PCB.
- Carefully apply the hot soldering iron to the solder on top of the AM-FM pins.
- Gently and firmly push on the pins with the Spudger to remove the switch from the underside of the PCB.

To reassemble your device, follow these instructions in reverse order.