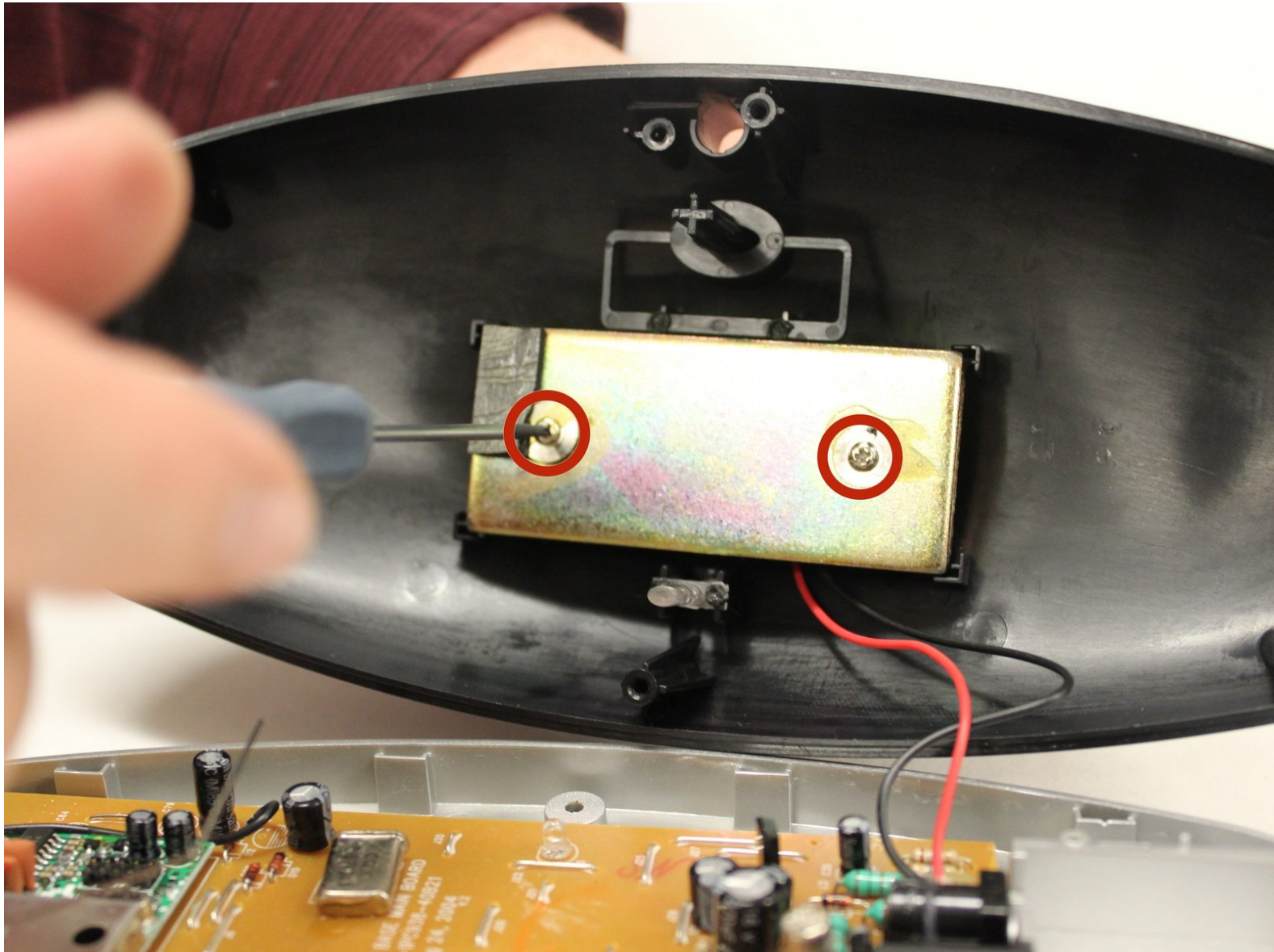




# Polyconcept 900-MHz Retro Cordless Telephone Device Charger Plate Replacement

Replace the charging plate.

Written By: Jay Gunter



## INTRODUCTION

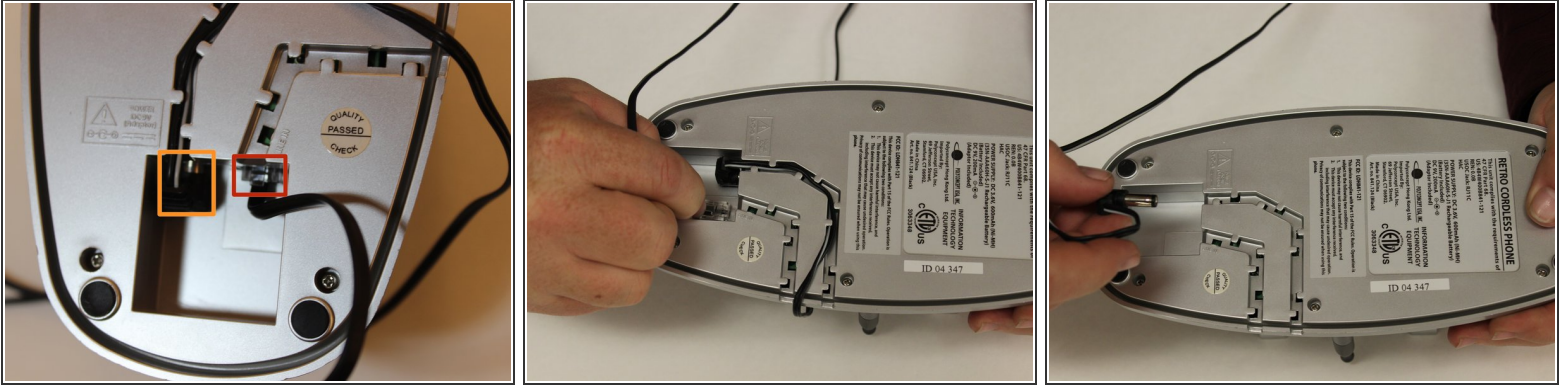
The plate which holds the phone as it charges may need to be changed occasionally. This guide will help you remove the plate.



### TOOLS:

- [Spudger](#) (1)
  - [Tweezers](#) (1)
  - [Phillips #00 Screwdriver](#) (1)
  - [Soldering Iron](#) (1)
-

## Step 1 — Removing Power and Telephone Cords



- To disconnect the phone cord, squeeze the tab against the connector and pull the cord away from the telephone-line-in-jack.
- To disconnect the power cord, grasp the end and pull back and away until it is disconnected.
- Once disconnected remove each cord from its track.

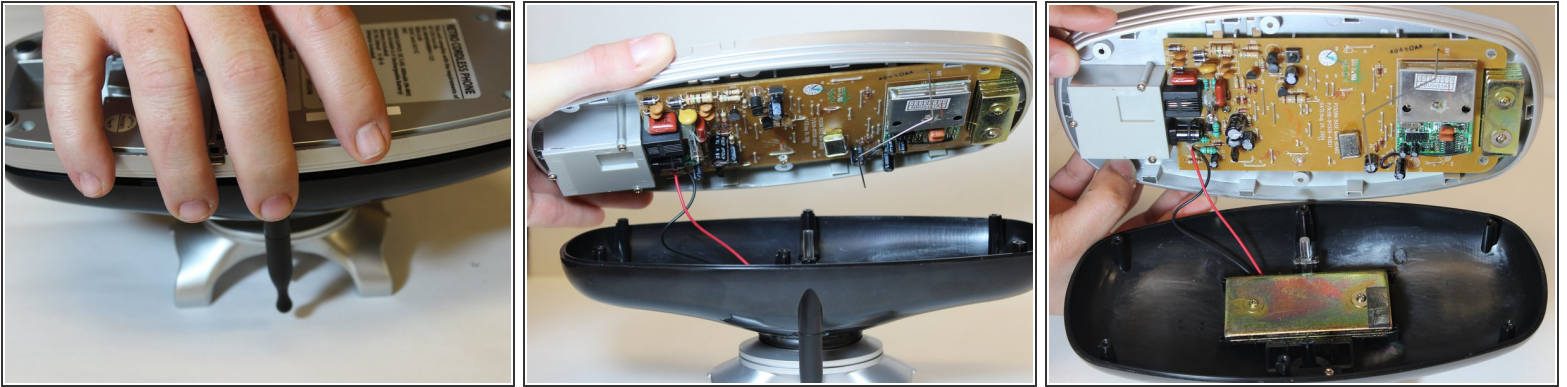
## Step 2 — Removing Screws to Base Plate



- Using a Phillips #00 screwdriver, remove the six 7mm screws from the base plate.



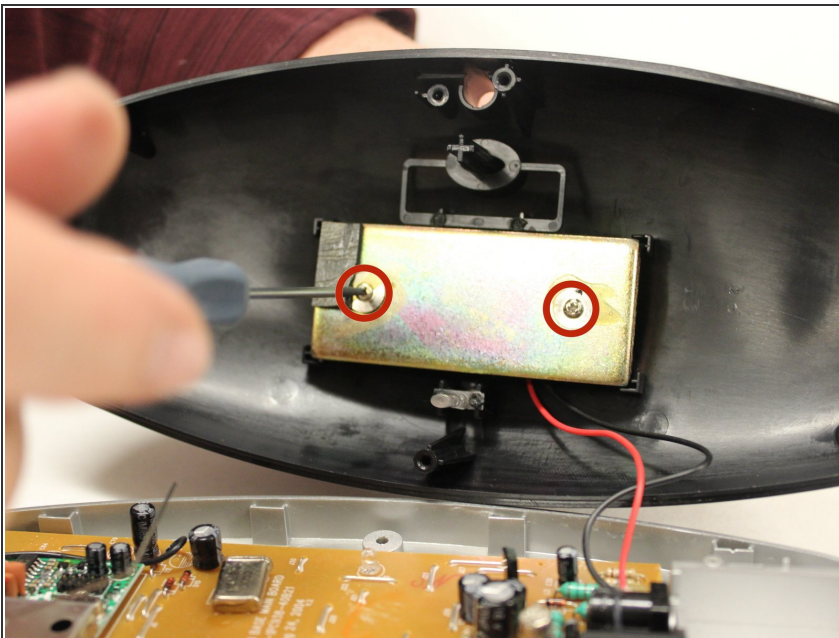
### Step 3 — Remove Bottom Plate from Base



- With the base turned upside down, grasp the edges of the base plate and gently lift from the rest of the base.

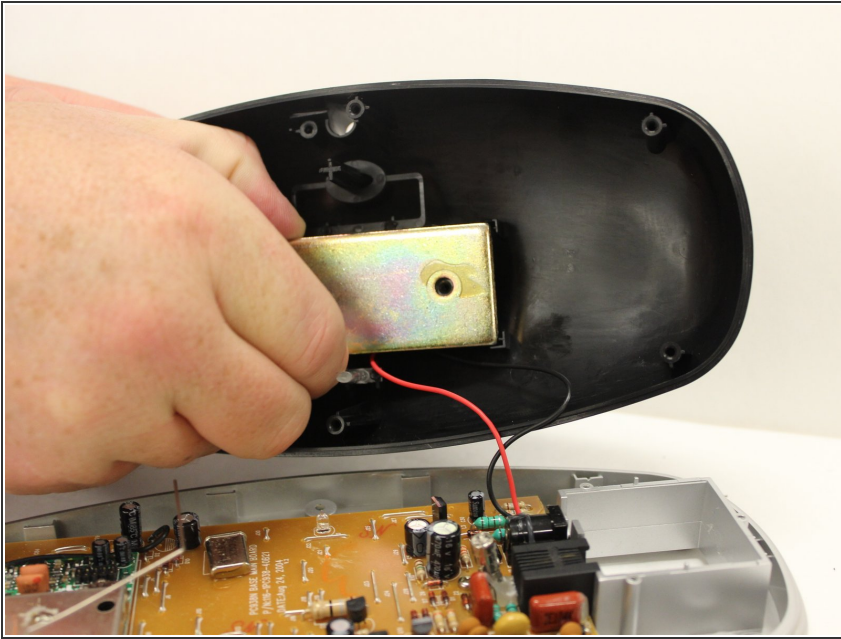
⚠ Two wires lead from the motherboard to the charger plate, so the two parts cannot be completely separated without further steps.

### Step 4 — Removing the Screws from the Charger Plate



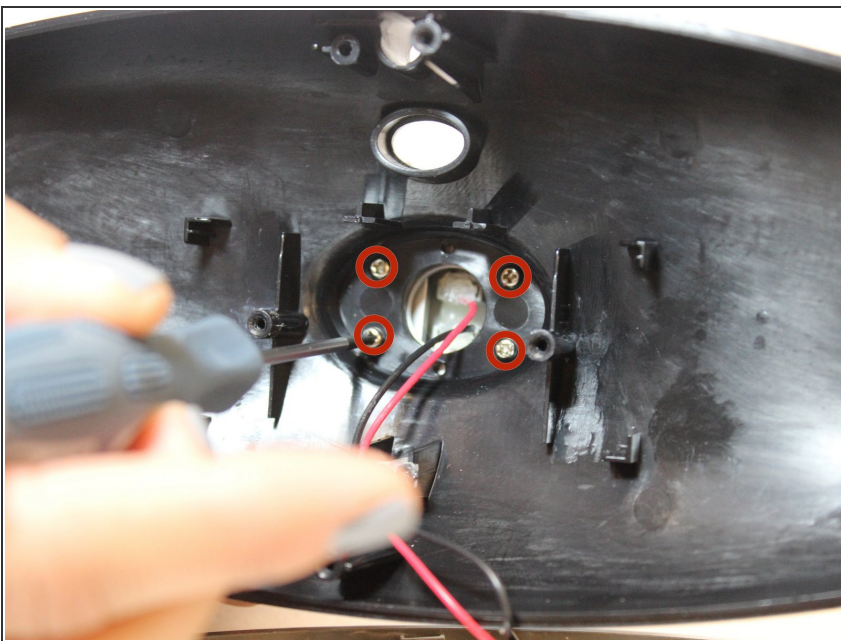
- Use a Phillips #00 screwdriver to remove the two 5mm screws from the metal plate.

## Step 5 — Removing the Plate



- Grip the metal plate and pull towards you.
- ⓘ You may need to wiggle the plate back and forth gently to loosen it from its housing.

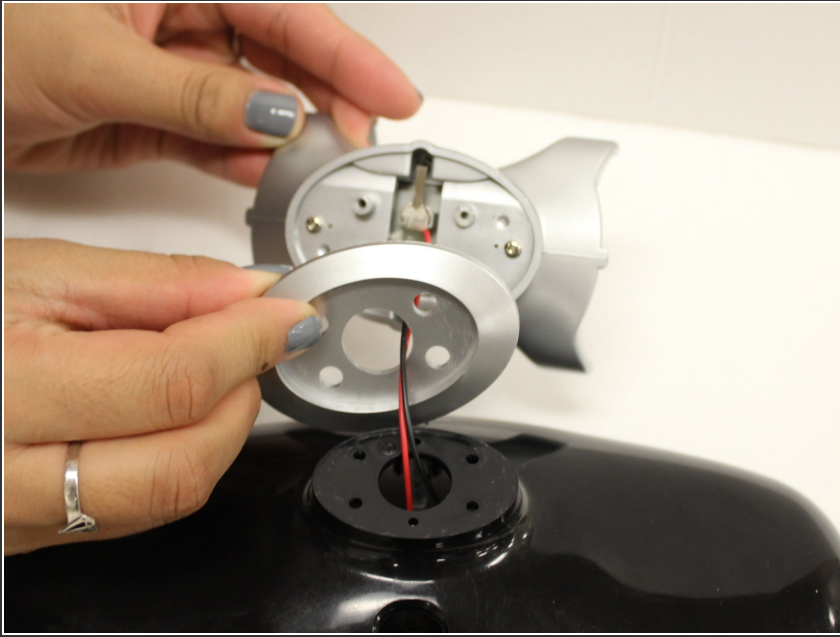
## Step 6 — Removing Screw from Base Cover



- Use the Philips #00 screwdriver to remove the four 6mm screws from the base cover.

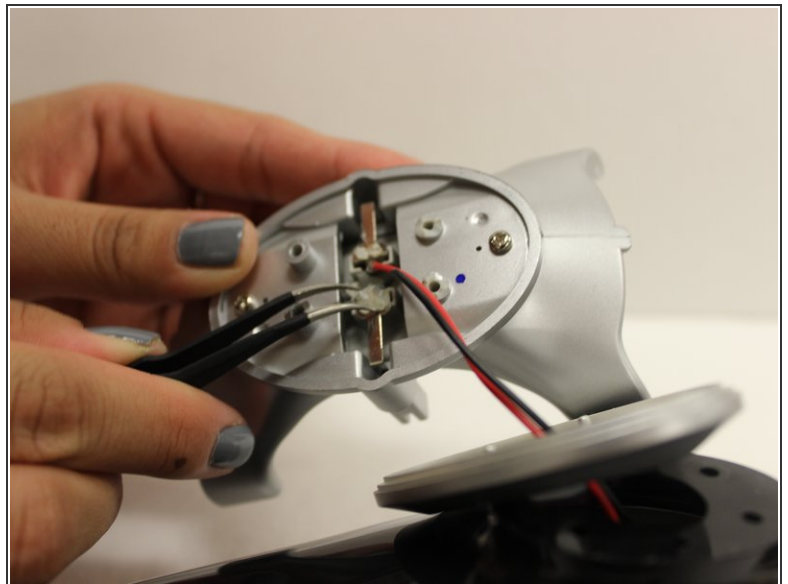
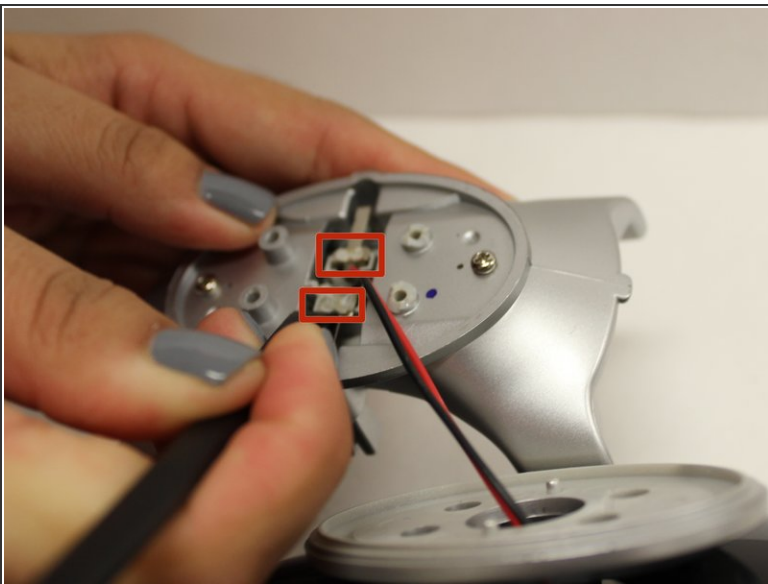


## Step 7 — Separating Charge Plate from Base Cover



- Gently pull the charge plate away from the rest of the base and separate the two pieces of the charge plate.

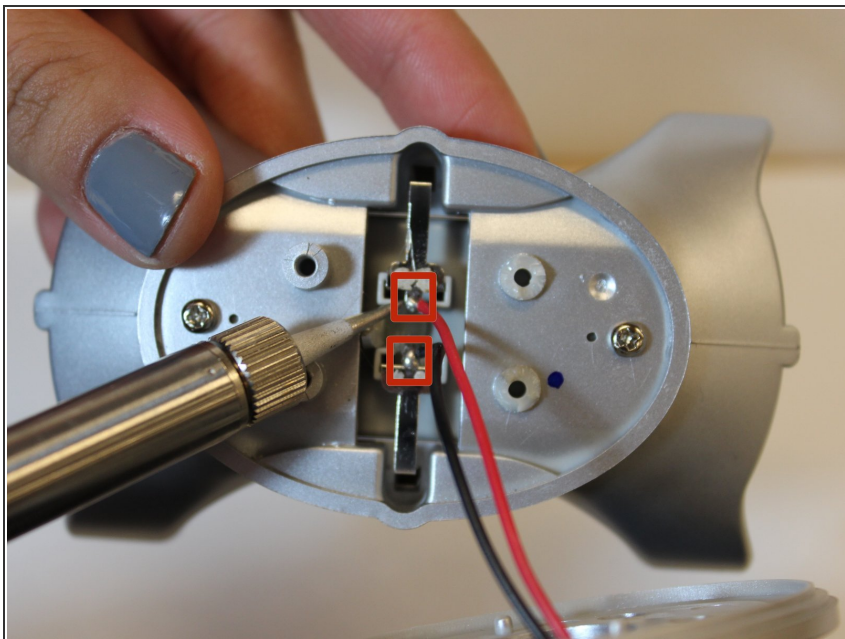
## Step 8 — Removing Glue from Wires



- Use the spudger to gently scrape the glue away from the wire connections.

**i** If the spudger is not adequate, try using the tweezers to pull the glue away before scraping.

## Step 9 — Desoldering the Wire Connections



- Use the soldering station to desolder the wire connections.
- ⓘ For further instructions on using the soldering station [click here](#).

To reassemble your device, follow these instructions in reverse order.