



# Xbox 360 Wireless Controller D-pad Replacement

Give your games some direction. Replace the...

Written By: Brett Hartt



# INTRODUCTION

Give your games some direction. Replace the D-pad on your Xbox 360 wireless controller.

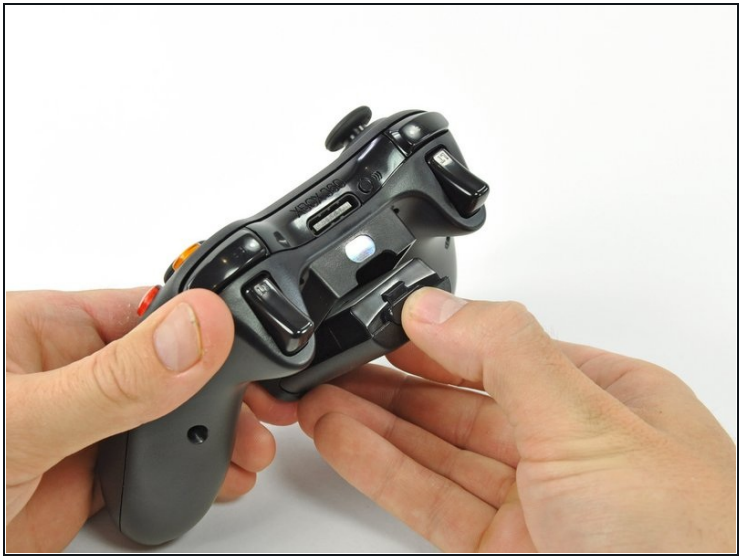
## TOOLS:


Spudger (1)  
T8 Torx Security Bit Screwdriver (1)  
Tweezers (1)

## PARTS:

Xbox 360 Wireless Controller D-Pad  
Button Gasket (1)

### Step 1 — Battery



- Depress the battery release button on the top of the controller.
  - Remove the battery holder from the controller.
-  The standard option for Xbox 360 Wireless Controllers Battery Packs is AA batteries. A rechargeable battery is also available, but both battery options are removed from the controller in the same way.

## Step 2 — Rear Case



- Use a pair of [tweezers](#) to peel the barcode sticker from the battery compartment.

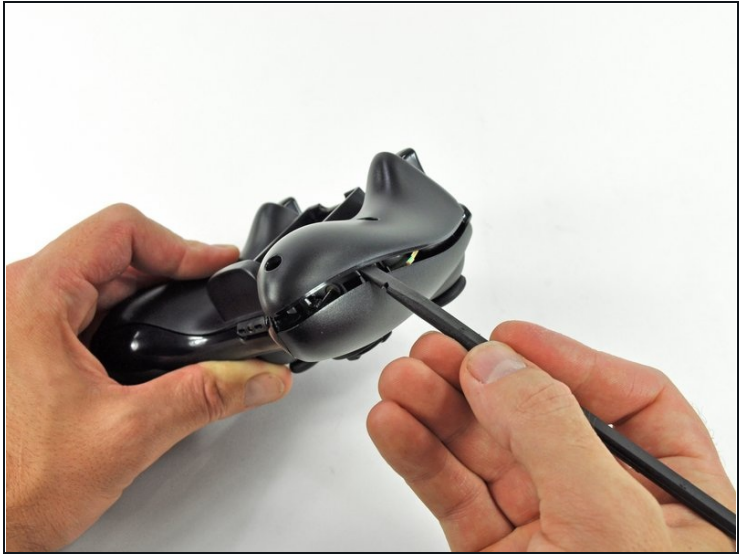
## Step 3



- Remove the seven 9.3 mm T8 Security Torx screws securing the rear case to the front case.



## Step 4



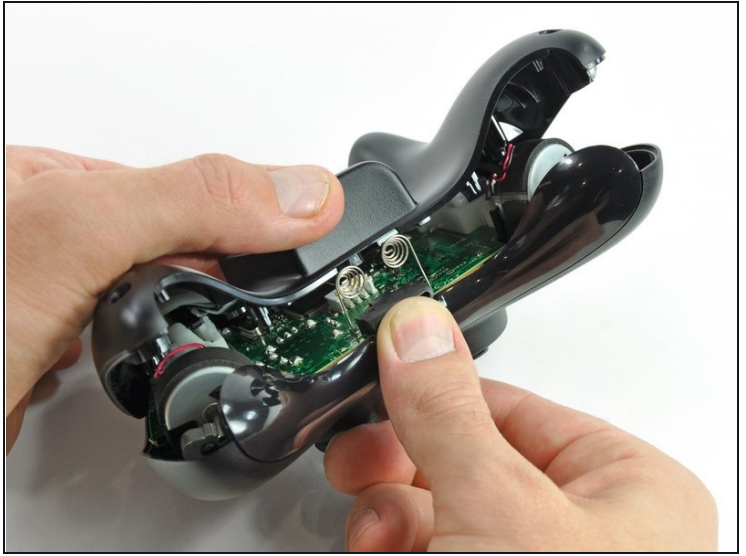
- Insert a [Spudger](#) between the front and rear cases along the left edge of the controller.
- Rotate the spudger toward the front of the controller, prying the two cases apart.

## Step 5



- Insert a spudger between the front and rear cases, near the headphone jack.
- Rotate the spudger toward the front of the controller to pry the two cases apart.

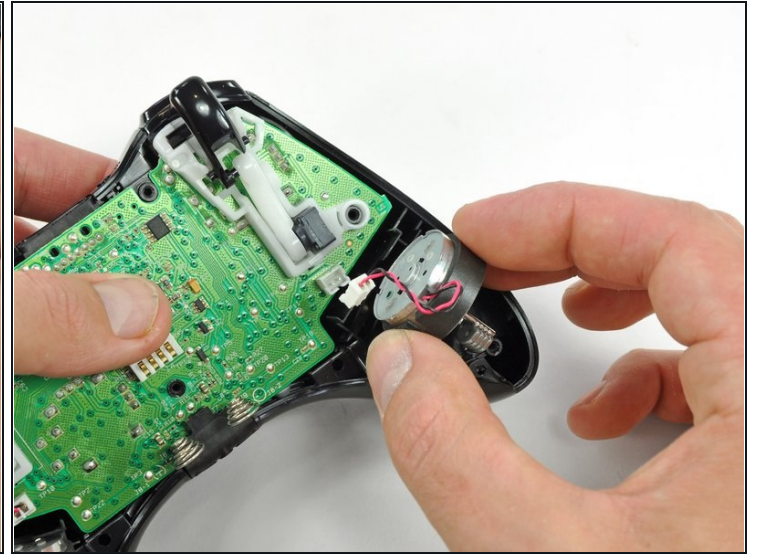
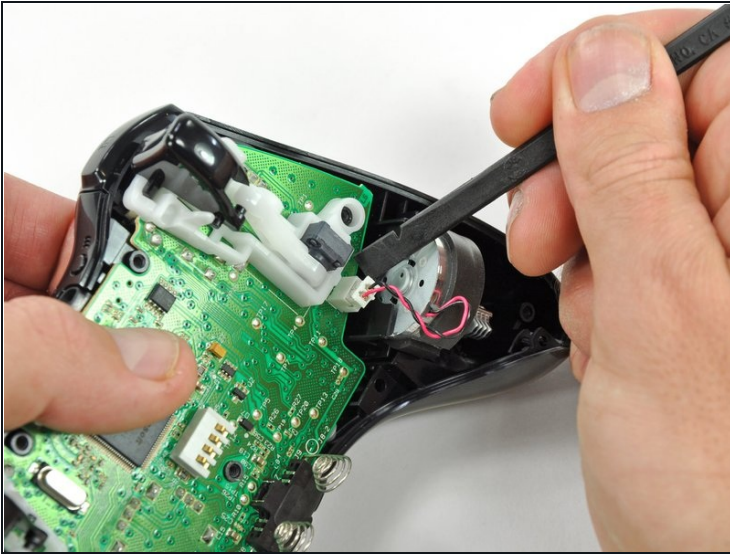
## Step 6



- Grasp the controller by the battery compartment and the headphone jack.
- Lift the battery compartment away from the headphone jack, separating the rear case from the front case and logic board.
- ☑ The battery contact springs are held in place by slots in the battery housing in the rear case. Be sure to realign them properly during reassembly.

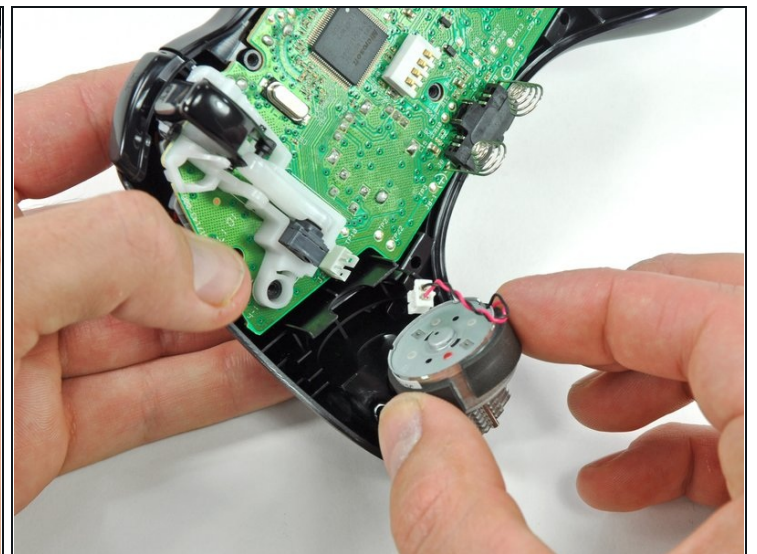


## Step 7 — Vibration Motors



- Use the flat end of a spudger to remove the vibration motor cable, moving it upward from its socket on the logic board.
- Lift the vibration motor out of the front case.

## Step 8



- Remove the vibration motor from the other side of the controller using the same method previously described.
- ① The **left motor** has significantly more counterweight than the right motor.

## Step 9 — Logic Board



- Lifting from the headphone jack and power plug, remove the logic board from the front case.

## Step 10 — D-pad



- Remove the rubber pad from the back of the D-pad.



## Step 11



- Remove the two 7.0 mm silver Phillips screws from the back of the D-pad.

## Step 12



① The D-pad is secured to its backing by two diagonal clips, shown in red.

- Use a pair of [tweezers](#) and squeeze the clips together to release the D-pad from its backing.



## Step 13



- Lift the D-pad backing out of its compartment on the front case.
- The D-pad remains below the front case.
- ⓘ The D-pad will fall once its backing is removed. Be sure to support it as you remove the backing.
- ★ The backing is slotted in its compartment to ensure that it will always be aligned properly.

---

To reassemble your device, follow these instructions in reverse order.