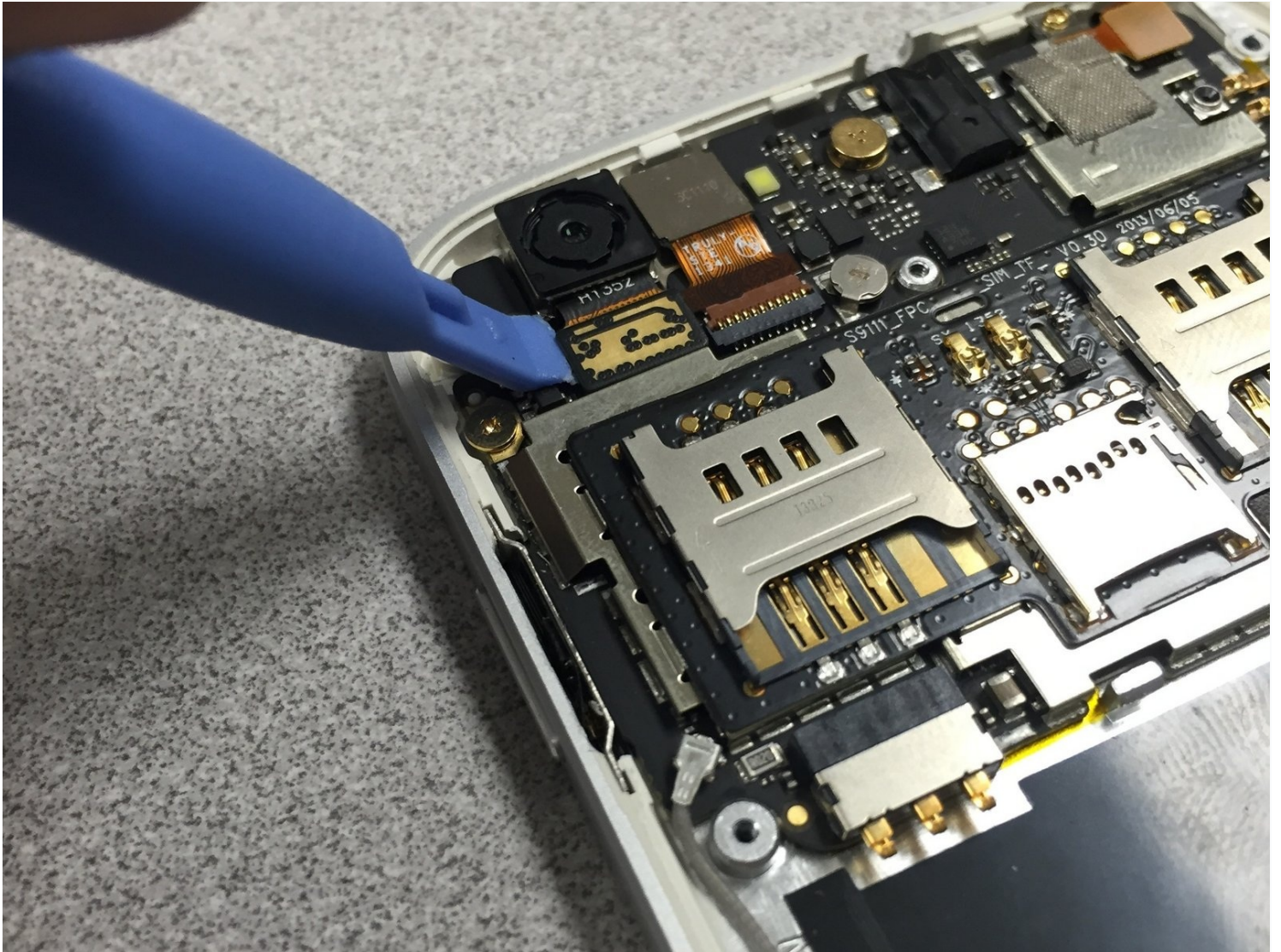




# Blu L120 Rear Facing Camera Replacement

Written By: Julio



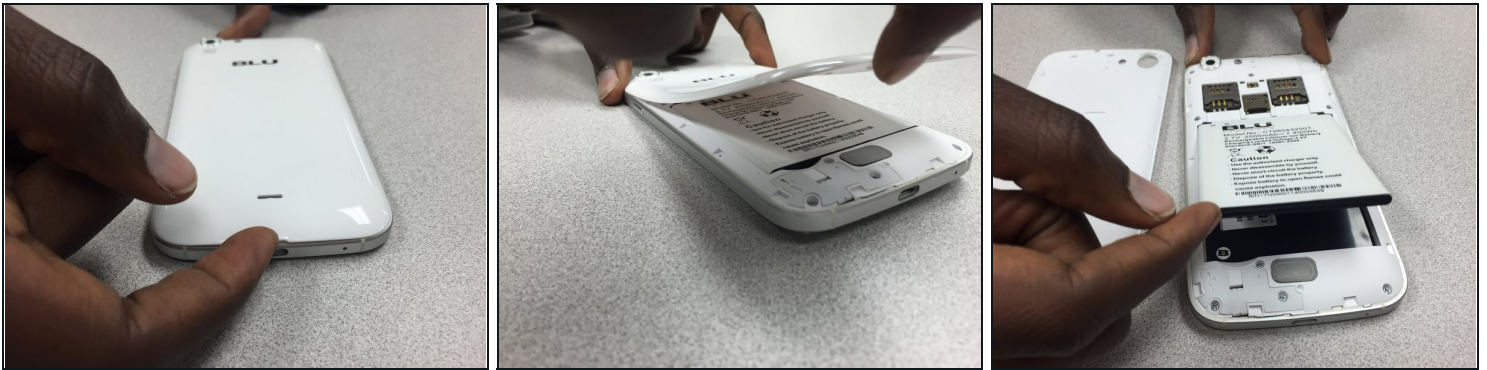
## TOOLS:

Phillips #00 Screwdriver (1)

iFixit Opening Tool (1)

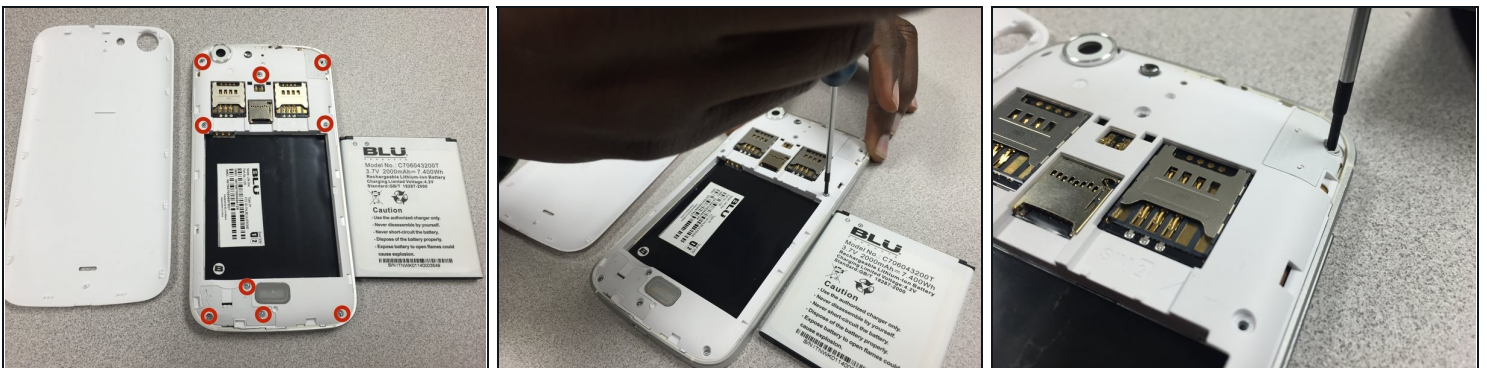
Spudger (1)

### Step 1 — Remove back panel



- Remove the cover by lifting the notch towards the bottom of the phone. Use your fingernail to lift it up.

### Step 2 — Screw Removal



- Remove these nine screws with a small phillips screwdriver. They are all the same size.
- There is a small screw hidden under the warranty sticker. You may either remove or poke through it .

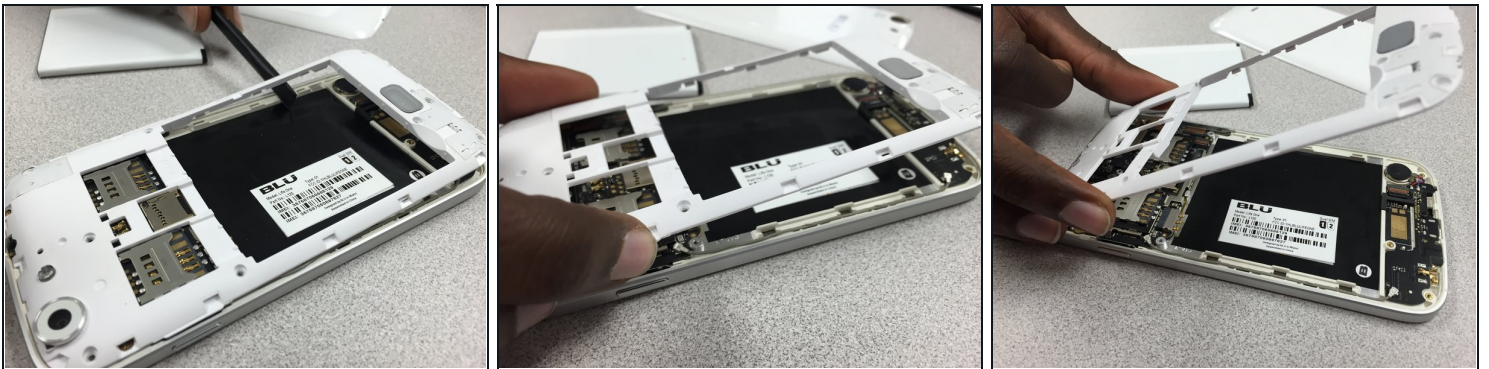


### Step 3 — Rear Panel removal



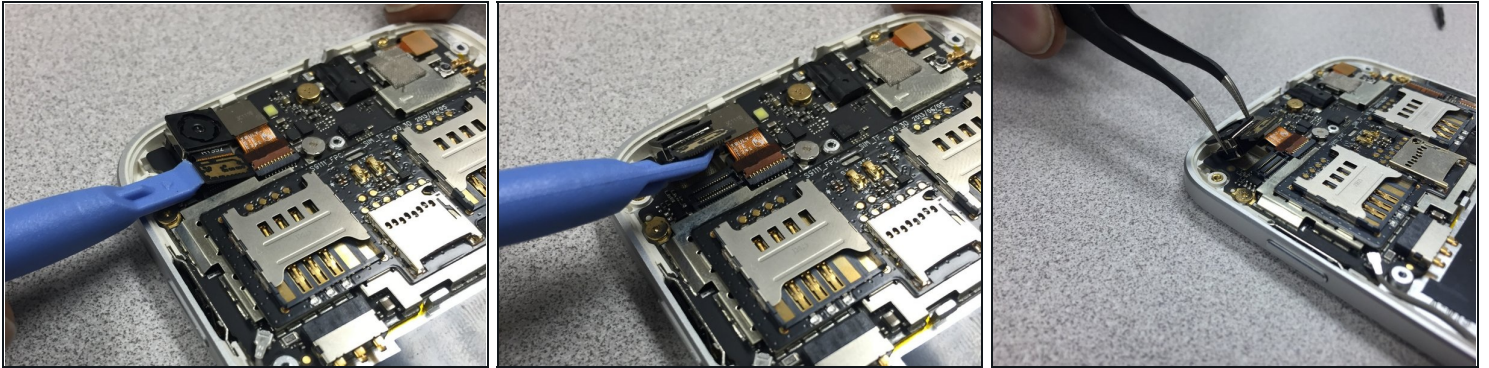
- Use the pry tool to gently separate the panel from the frame, starting from the bottom left corner and continue along the edge of the phone.
- **\*WARNING\*** by doing this, you will void the manufacturers warranty.

### Step 4 — Separate back panel from frame



- Continue using the pry tool around the back panel of the phone to separate both pieces.
- Once you have gone around the entire frame, use both hands to pull it apart.

## Step 5 — Camera Removal



- Use the pry tool to disconnect the camera from the device.
- Gently lift the camera up and use the [tweezers](#) to remove it from the phone.
- Reinstall the camera. Then follow the guide in reverse to put the phone back together.

---

To reassemble your device, follow these instructions in reverse order.