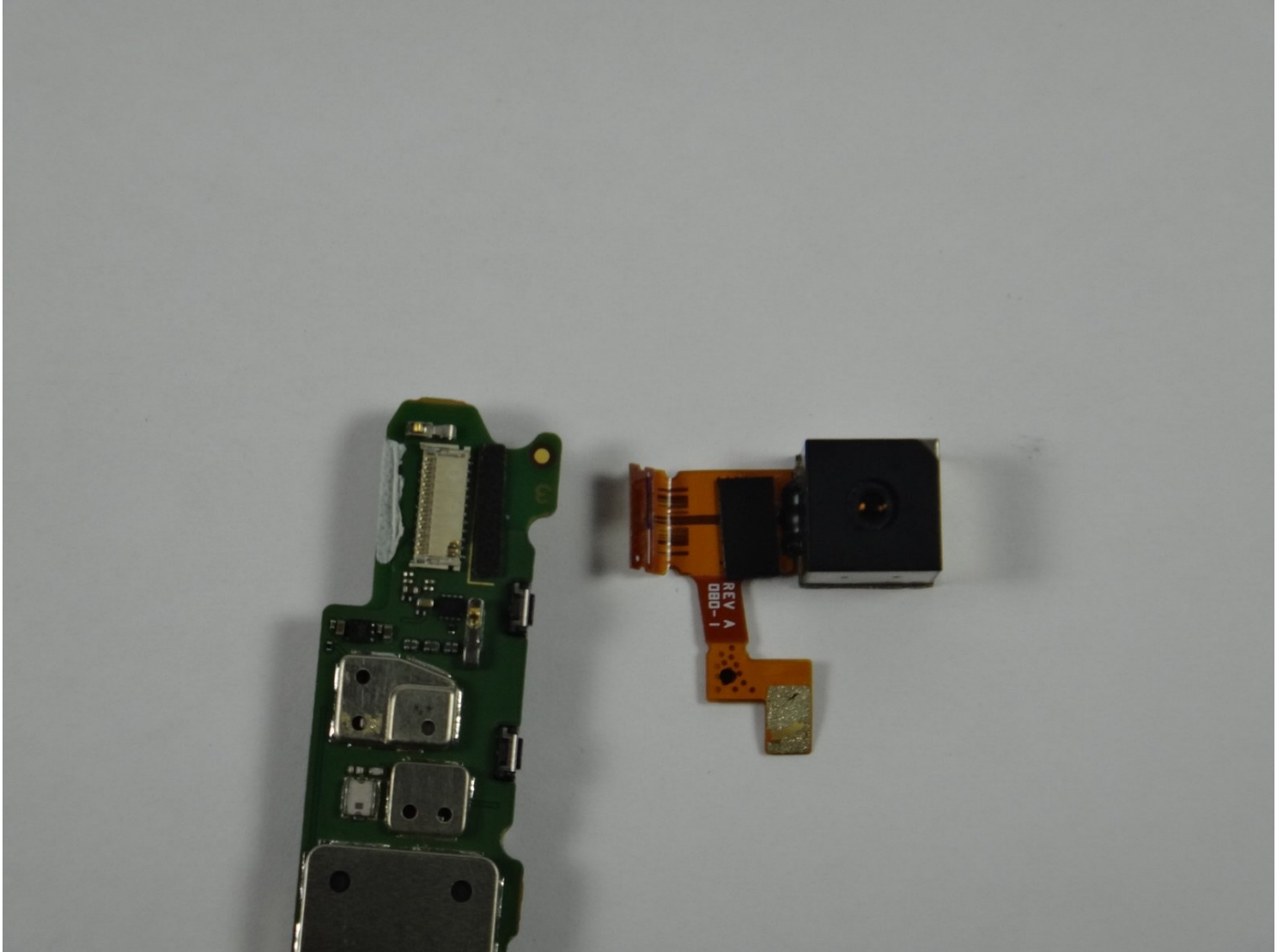




# Motorola Droid X2 Rear Facing Camera Replacement

This guide shows you how to replace the camera...

Written By: Aaron Mak



# INTRODUCTION

This guide shows you how to replace the camera as it may be damaged or malfunctioning. The removal of the camera itself is simple, but getting there can be tricky because of the motherboard. Carefully follow guide. Tools are required for this.

## TOOLS:

[iFixit Opening Tool](#) (1)

[Tweezers](#) (1)

[Spudger](#) (1)

[T5 Torx Screwdriver](#) (1)

## Step 1 — Battery



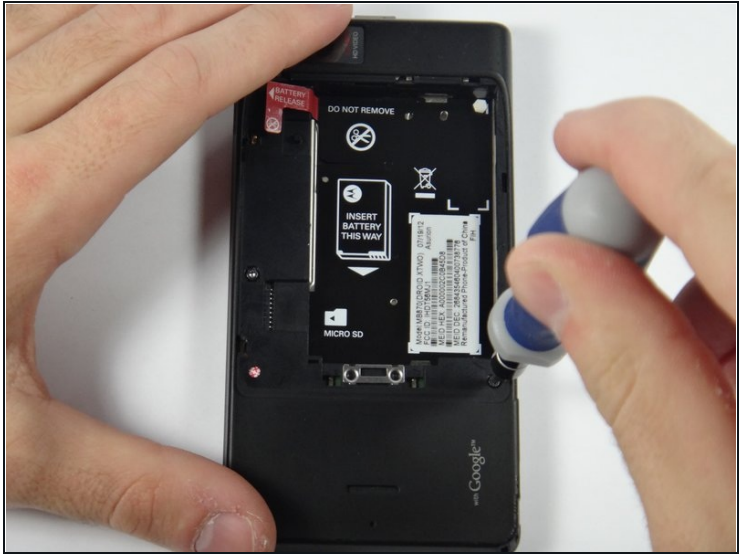
- Slide the plastic case off of the back of the phone, exposing the battery.

## Step 2



- Pull up on the red battery release tab and pull the battery out of the phone.

### Step 3 — Motherboard



- Remove the circled screws using a T-5 torques. These screws will be 4.3 millimeters in length.

⚠ Be careful to not strip any screws.

### Step 4



- Using a prying tool, snap off the front casing on the top and bottom of the phone.
- ⓘ Be careful not to lose the small rubber piece that sits over the microphone.

## Step 5



- Remove the circled screws using a T-5 torques.. These screws should be 5.8 millimeters in length.

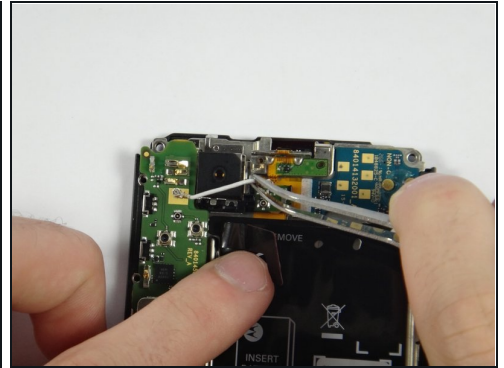
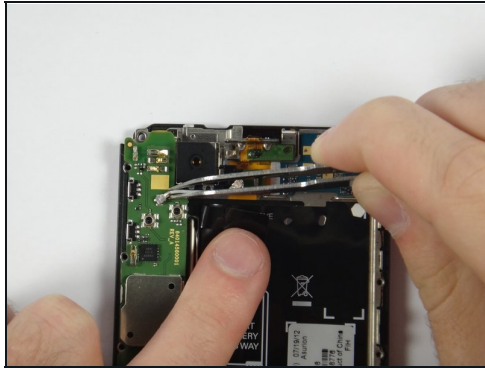
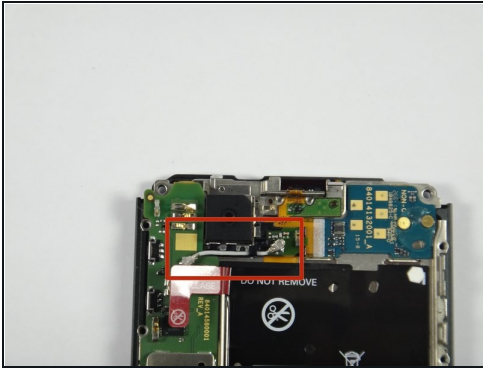
## Step 6



- Using a plastic opening tool, snap open the phone. It should separate into a front piece with the hardware and a plastic backing.



## Step 7



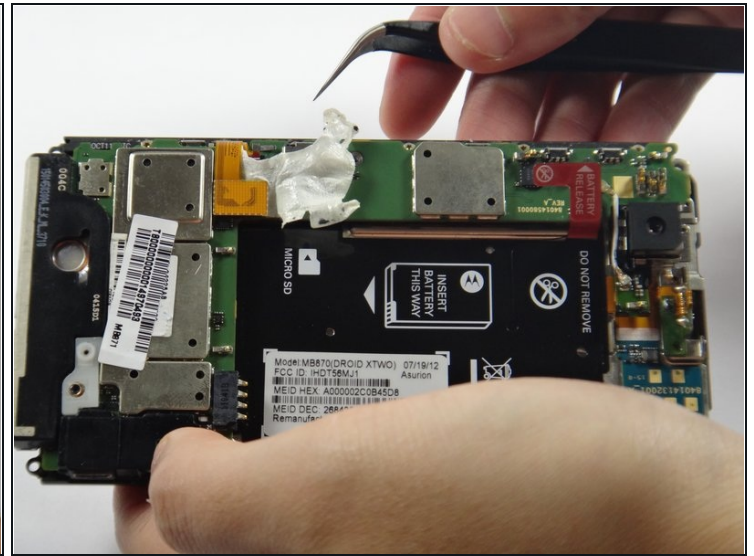
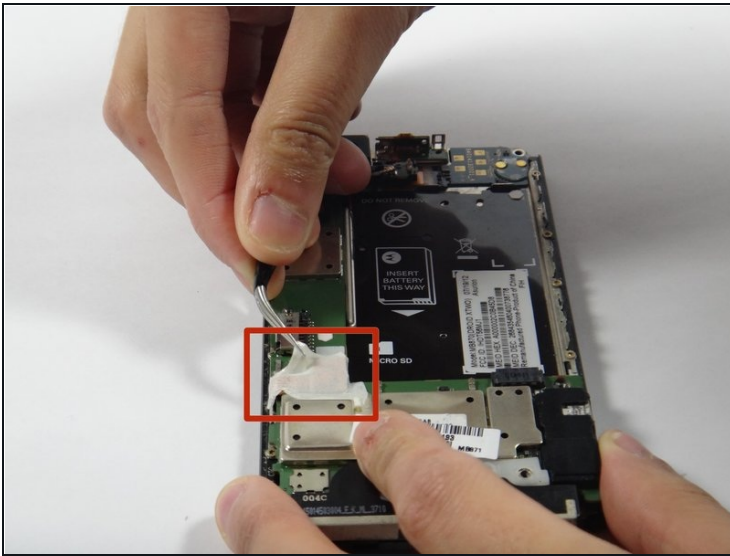
- Using [tweezers](#), remove the white wire at the top of the phone near the camera.

## Step 8



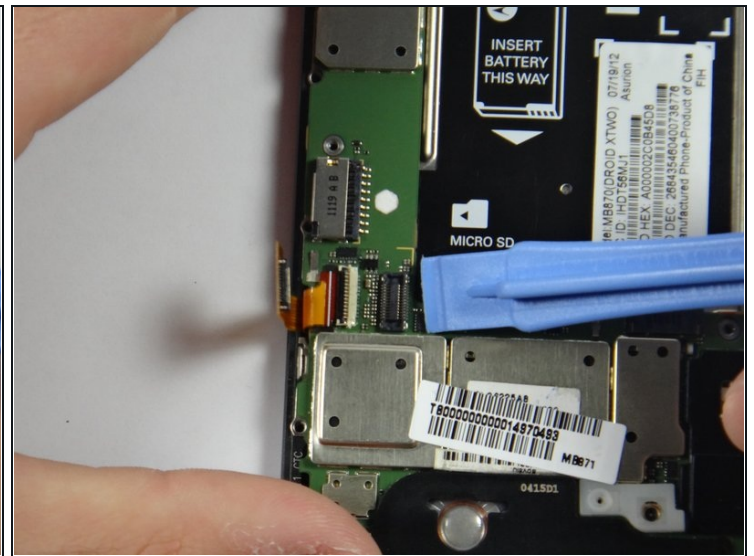
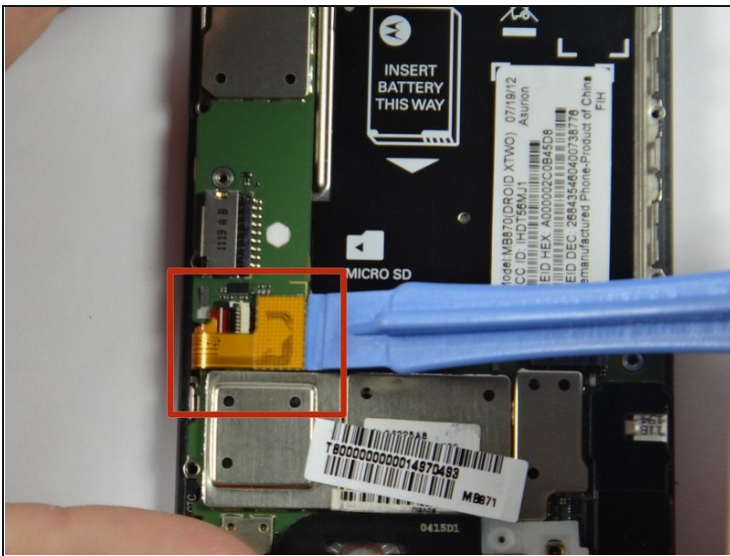
- Remove these nine screws using a T-3 torques. These screws should be 2.40 mm in length

## Step 9



- Using tweezers, removed the white electrical tape on the motherboard.

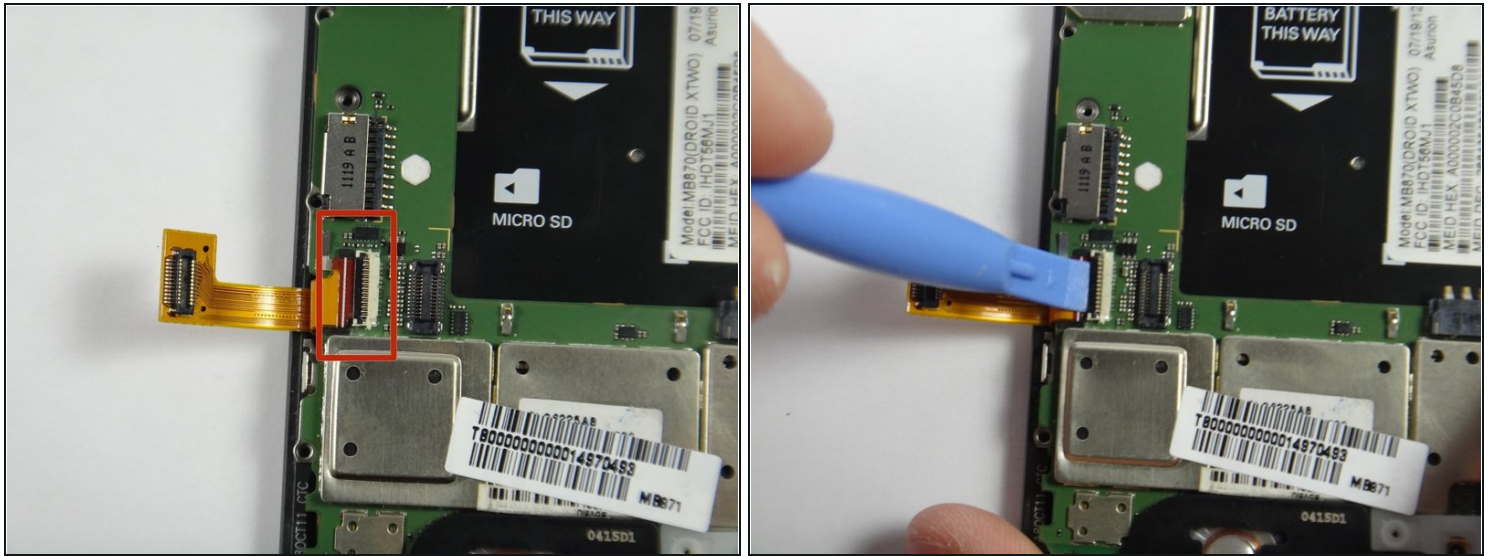
## Step 10



- Using the plastic opening tool, lift up to remove the connector.

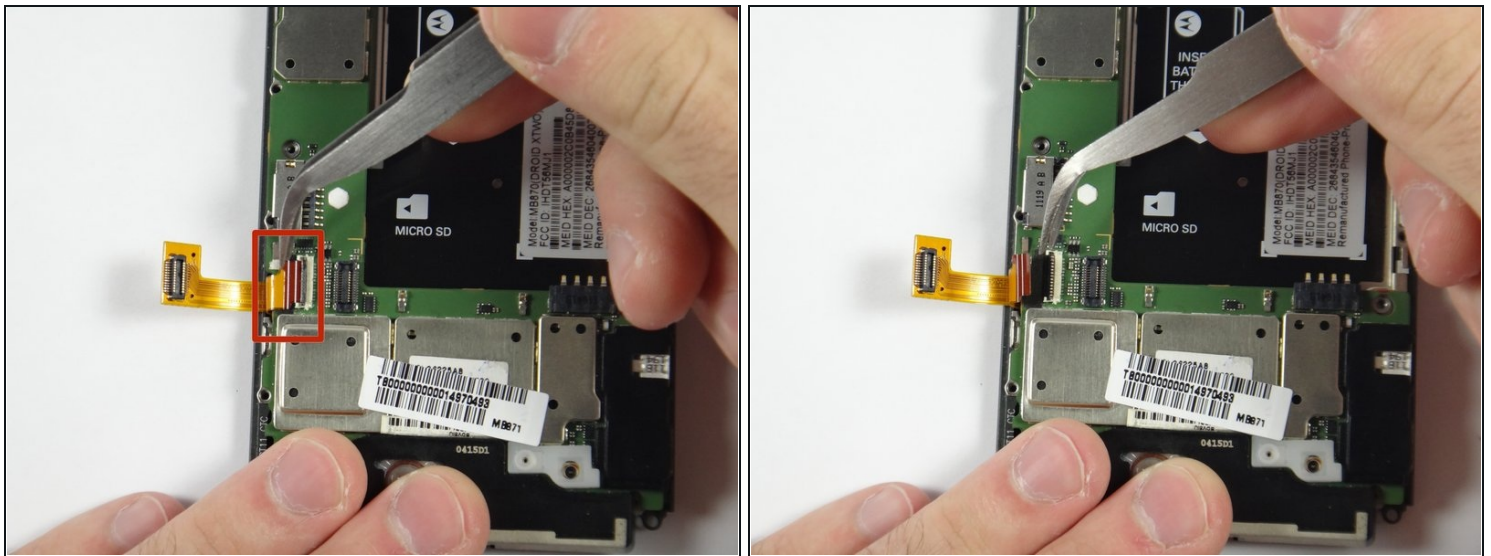


## Step 11



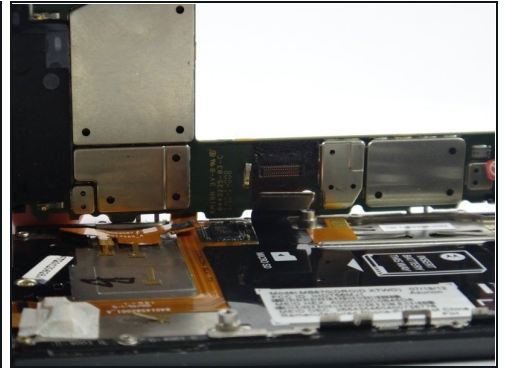
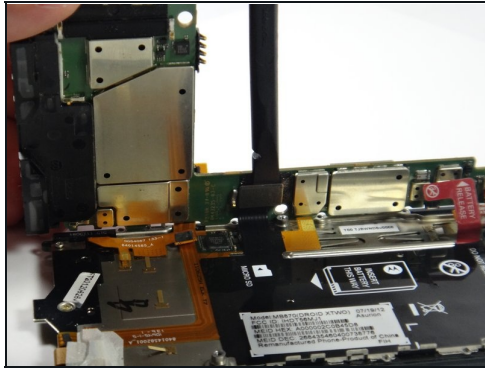
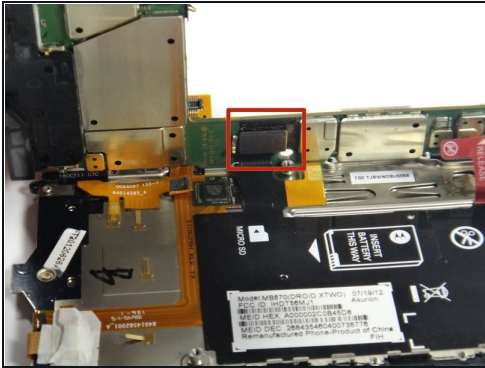
- Using a pry tool, lift the jawbone connector.

## Step 12



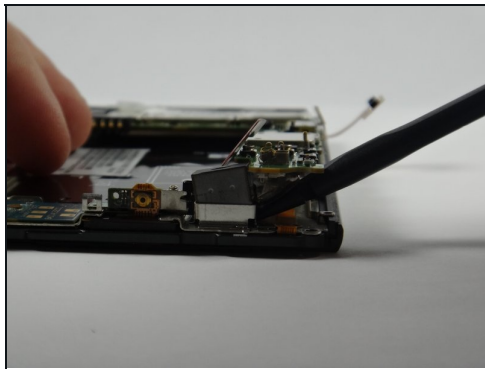
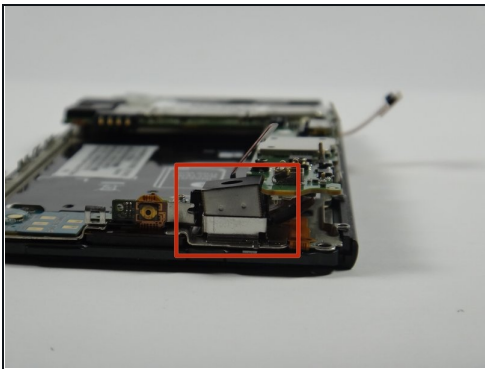
- Using tweezers, carefully disconnect the cable connector by pulling the cable out.

## Step 13



- Use a spudger to disconnect the cable connector.

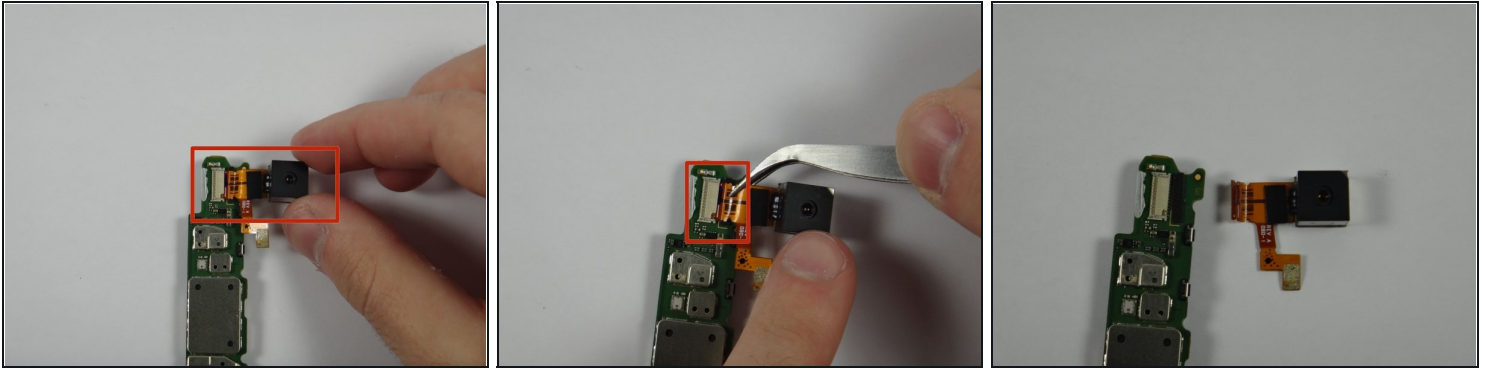
## Step 14



- Using a spudger, remove the camera. Lift up the motherboard and slide the spudger under the camera.



## Step 15 — Rear Facing Camera



ⓘ There should be jawbone connector here. However it was broken on this particular device. Lift it up using a pry tool.

- Using [tweezers](#), remove cable from motherboard.

---

To reassemble your device, follow these instructions in reverse order.