



Proctor Silex® 2-Slice Extra Wide Slot Toaster Teardown

Taking apart the Proctor Silex 2-Slice Toaster is order to access it's circuit board for maintenance.

Written By: Cory



INTRODUCTION

Taking apart the Proctor Silex 2-Slice Toaster is order to access it's circuit board for maintenance.

TOOLS:

- [Phillips #1 Screwdriver](#) (1)
 - [Small Needle Nose Pliers](#) (1)
-

Step 1 — Find a workspace



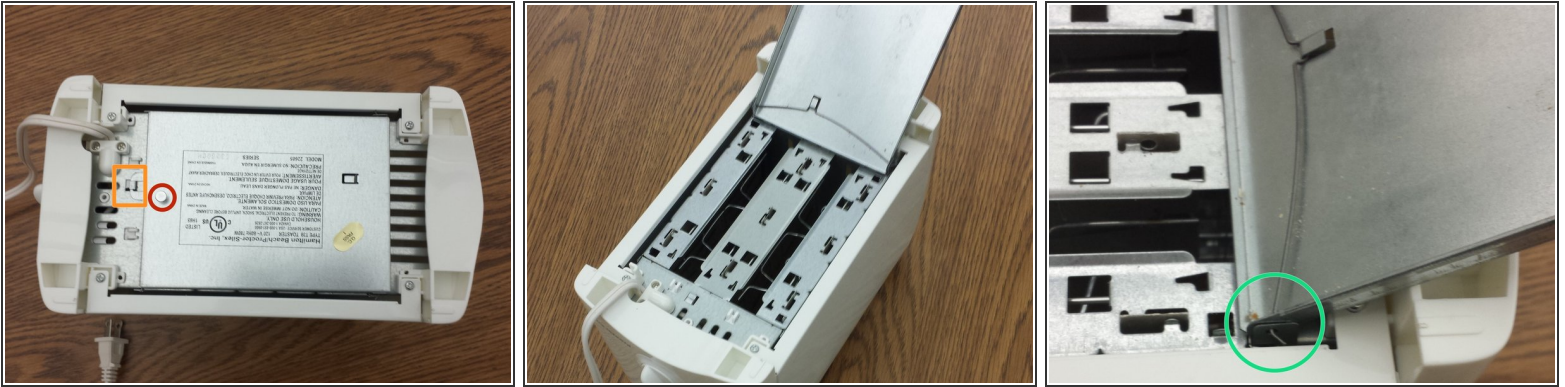
- Place toaster on a smooth flat workspace with plenty of room for parts once they are removed.

Step 2 — Flip toaster



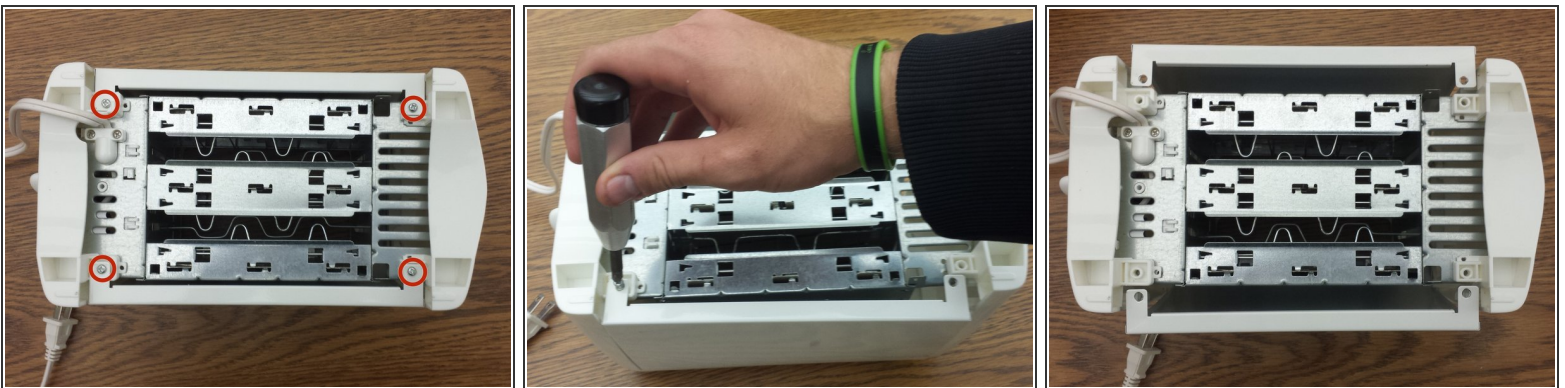
- Flip toaster upside down in order to see the bottom casing with the labels and warnings now facing up.

Step 3 — Remove Bottom



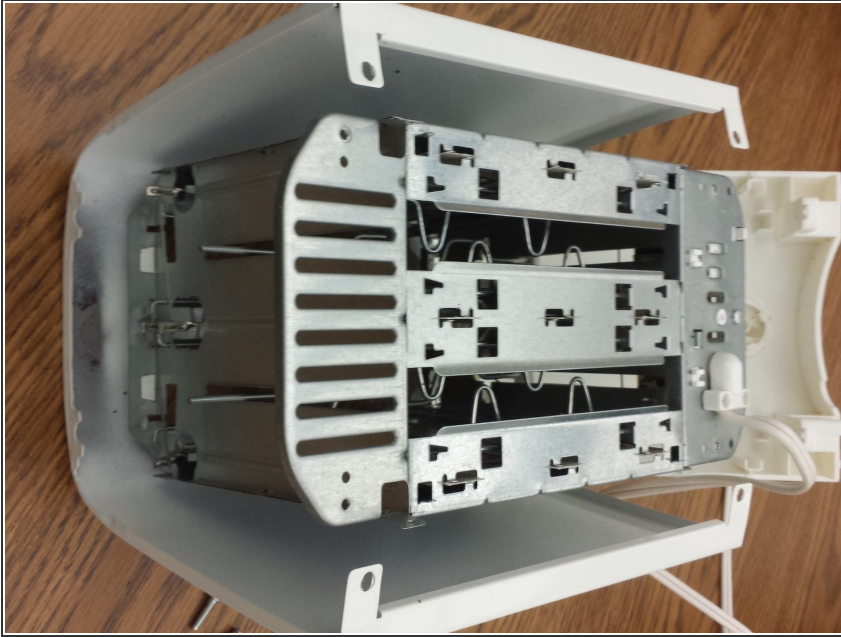
- Using your fingers, grab the circular tab and push it toward the side of the toaster with the toasting lever.
- By pushing the tab, the flange will free itself from the toaster allowing you to pull that side up and free from the toaster.
- With the bottom casing open, find the wire holding it onto the toaster. Using a small needle nose pliers thread the wire through the flange attached to the toaster allowing the entire bottom case to be removed from the toaster.

Step 4 — Remove housing screws



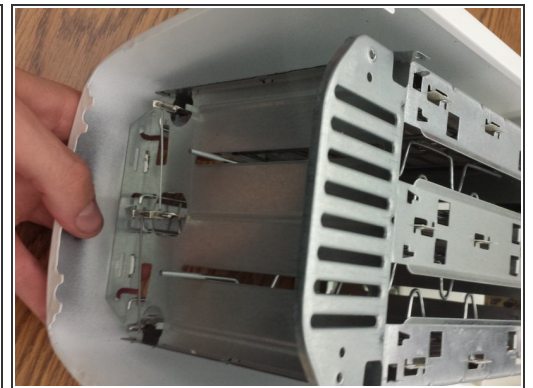
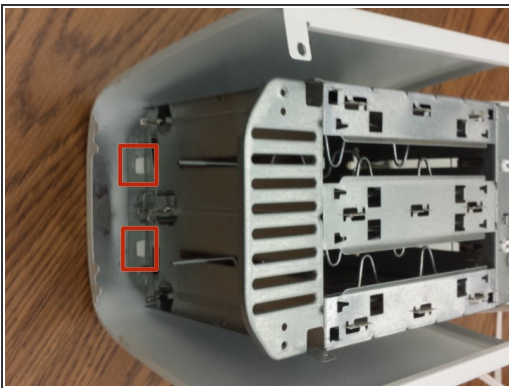
- Using a Phillips #1 screwdriver, remove the four screws on the underside of the toaster.

Step 5 — Remove side housing



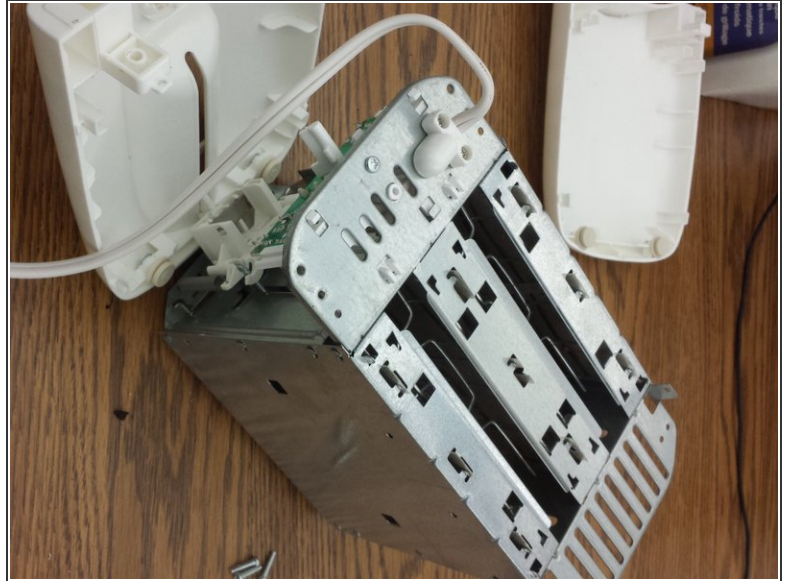
- To remove the outer housing of the toaster first go to the side opposite of the toasting lever and dial.
- Once that side is found, pull the housing straight upward while the toaster is still upside down flat on the table. It should come free very easily.

Step 6 — Open flanges for housing removal



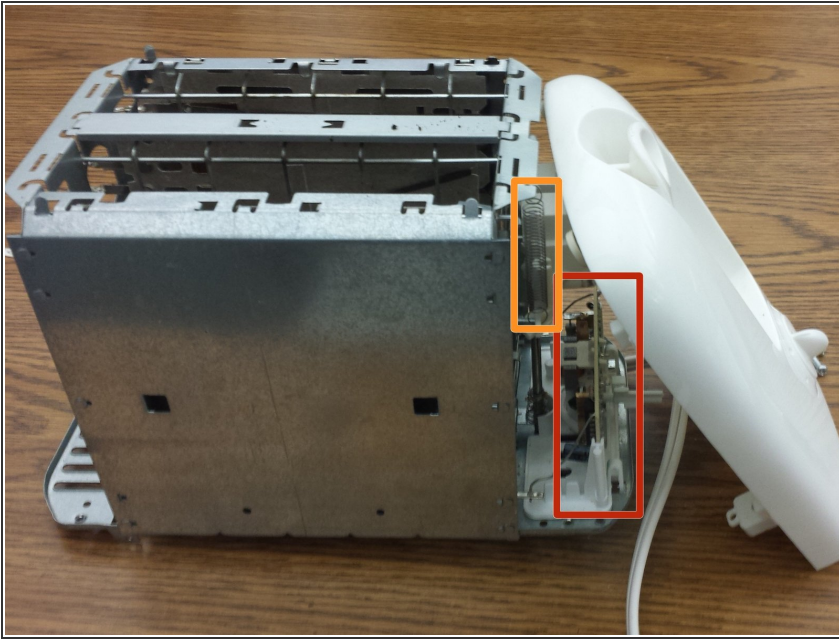
- After removing the side casing, you will locate two white tabs. Using a needle nose pliers lift these tabs so they stick up instead of laying flat.

Step 7 — Remove housing



- With the tabs now sticking up, use two hands, one to pull the inside mechanism up while holding the white housing down against the table. The tabs should slide free of the inside mechanism.
- The tabs are now free, there are another set of tabs on the opposite side but you can gently push the inside mechanism towards the toasting lever instead of using a needle nose to free them. The inside mechanism should slide free of the other tabs with a little force.

Step 8 — Perform and maintenance/modification to circuit board or spring



- You have reached the point where you can access the circuit board. The circuit board is soldered directly to the inside mechanism and the last casing is glued/press fit to the mechanism as well. That is why the teardown stopped here.
- There is now also access to the spring that deploys the toast once toasted. If it gets worn out you could easily replace now that this step has been reached.

Step 9 — Put toaster back together



- Perform steps in reverse order to put toaster back together.

To reassemble your device, follow these instructions in reverse order.