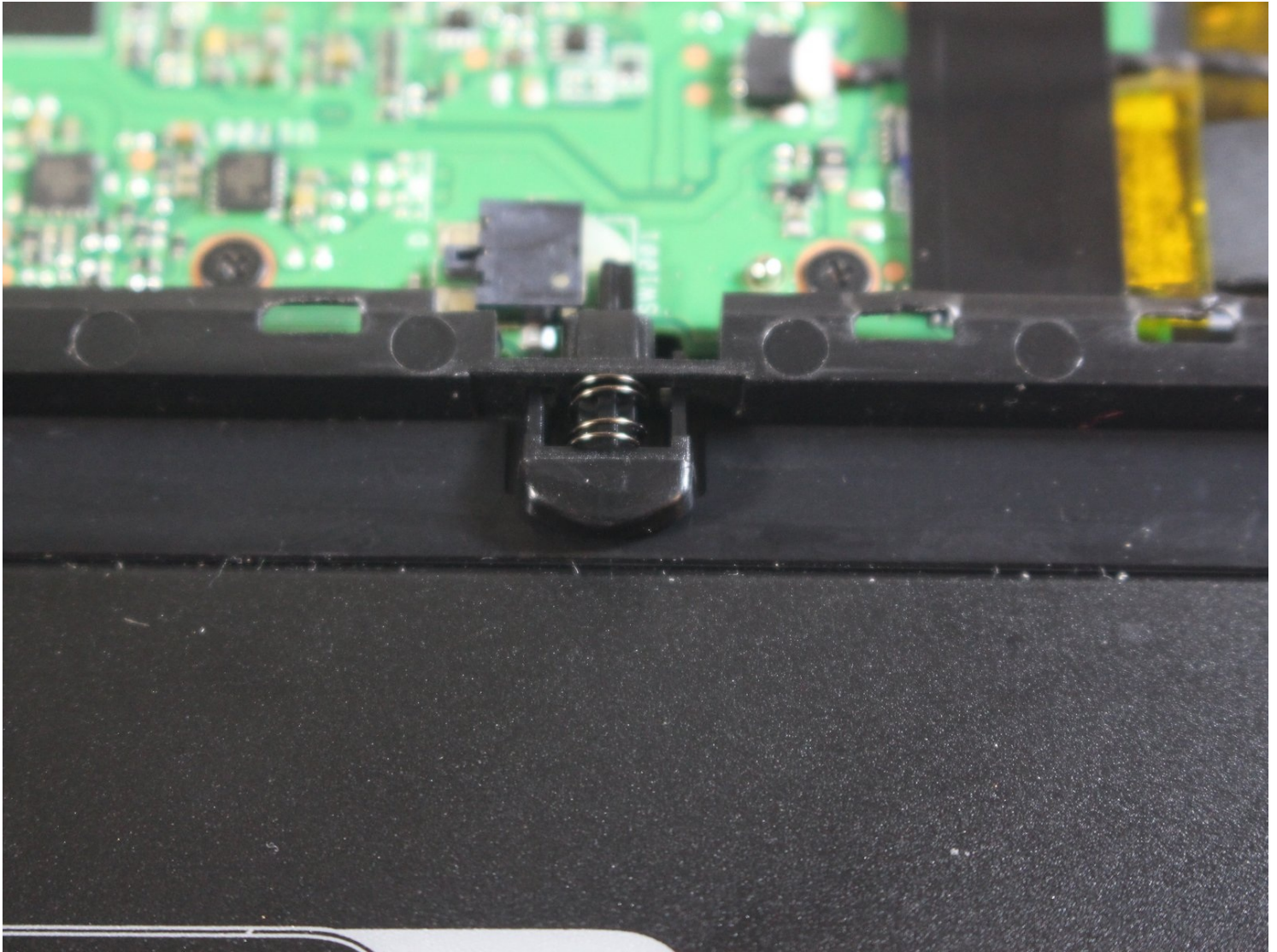




ASUS PadFone X Station Docking Indicator Device Replacement

Written By: Donnie Reynolds

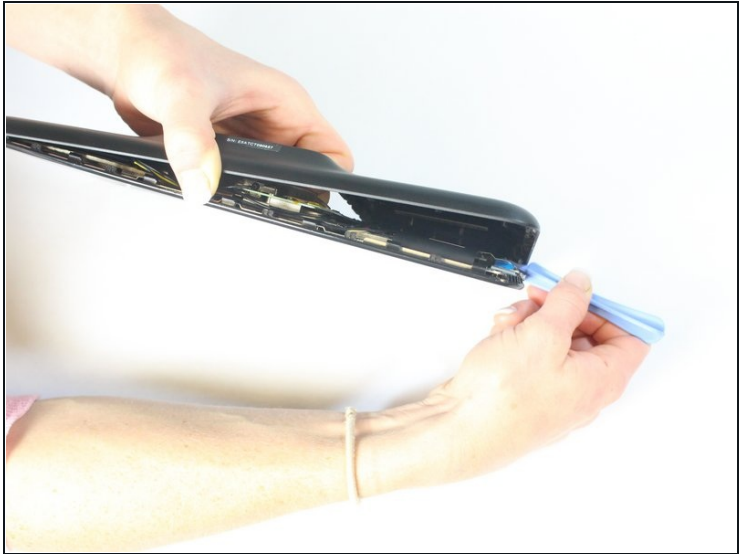


TOOLS:

[Tweezers](#) (1)

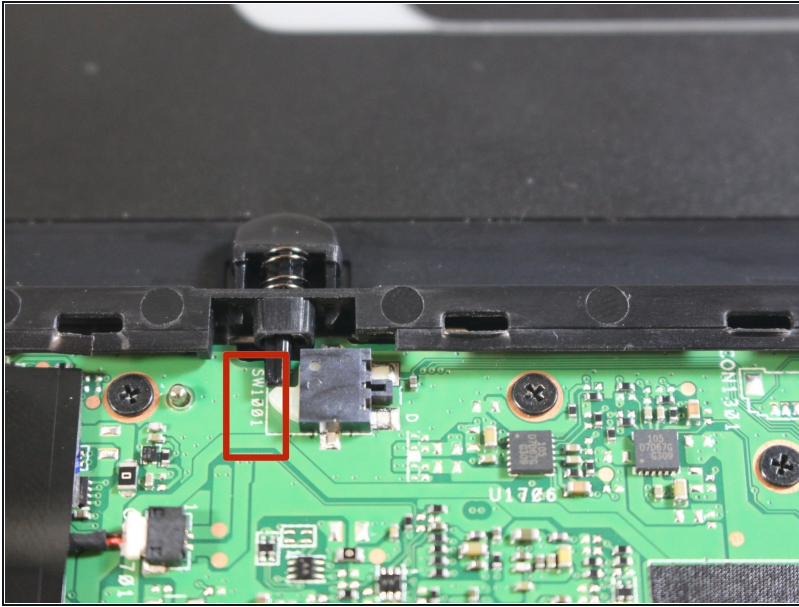
[iFixit Opening Tool](#) (1)

Step 1 — Back Cover



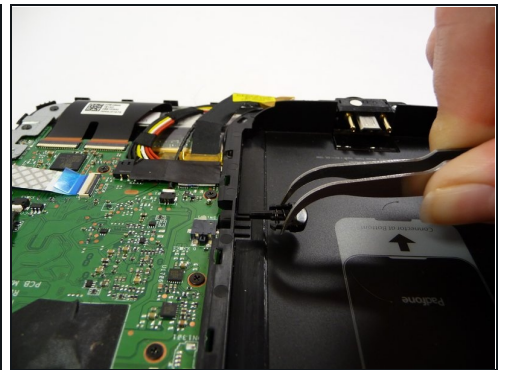
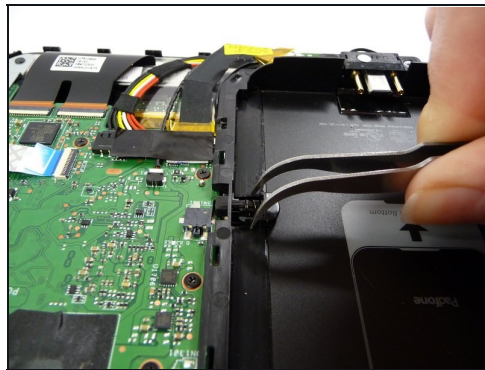
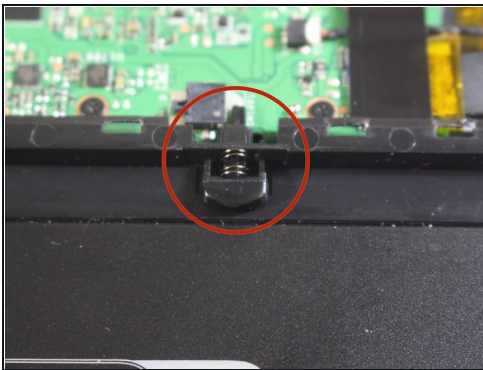
- Using the plastic opening tools, insert it into the edge and pry open.
- Use hands to help pull the back off from the front if needed.

Step 2 — Locate SW1001



- Locate SW1001

Step 3 — Locate docking indicator device



- With [tweezers](#) gently squeeze and remove docking indicator device

To reassemble your device, follow these instructions in reverse order.