



# Samsung Galaxy SIII Mini VE Rear Circuit Board Disassembly

Prerequisite only.

Written By: Megan





## TOOLS:

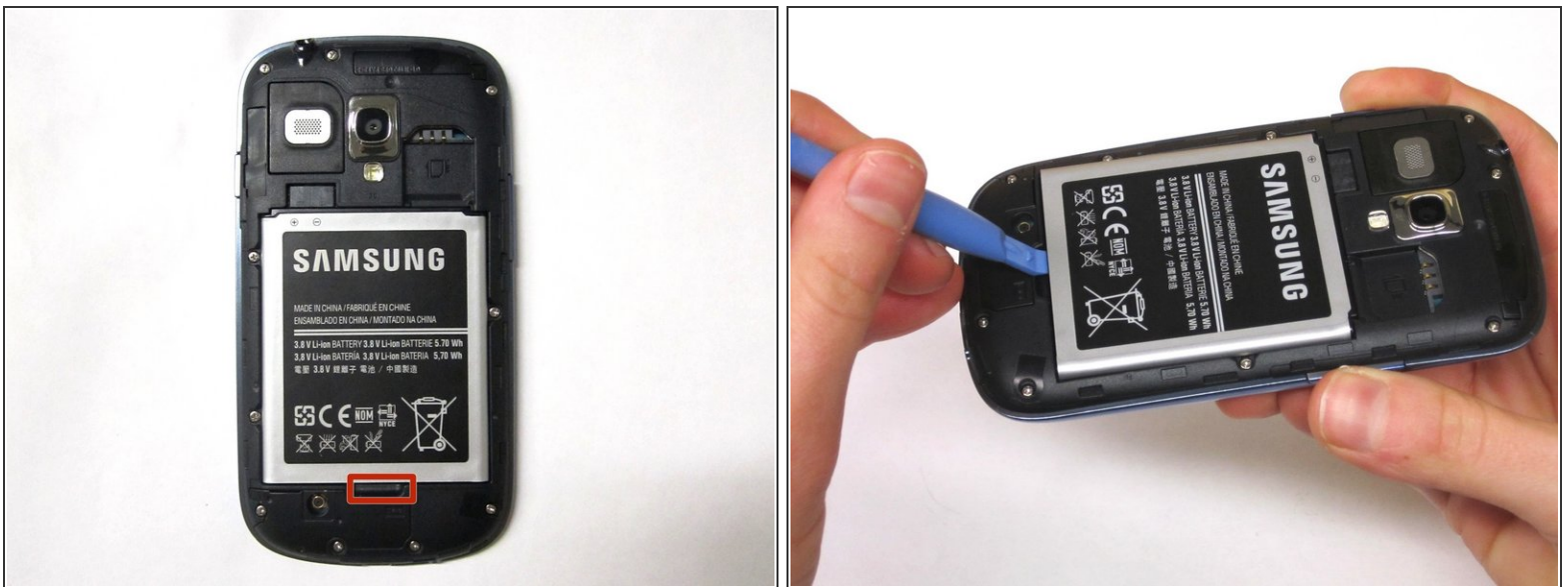
- [Phillips #00 Screwdriver](#) (1)
- [Spudger](#) (1)
- [iFixit Opening Tools](#) (1)

## Step 1 — Removing Rear Casing



- Flip your phone so you are facing the back.
- Locate the notch at the top and gently use your finger or an opening tool to remove the rear casing.

## Step 2 — Removing Battery



- Use your finger or an opening tool to pry the battery out of the phone.

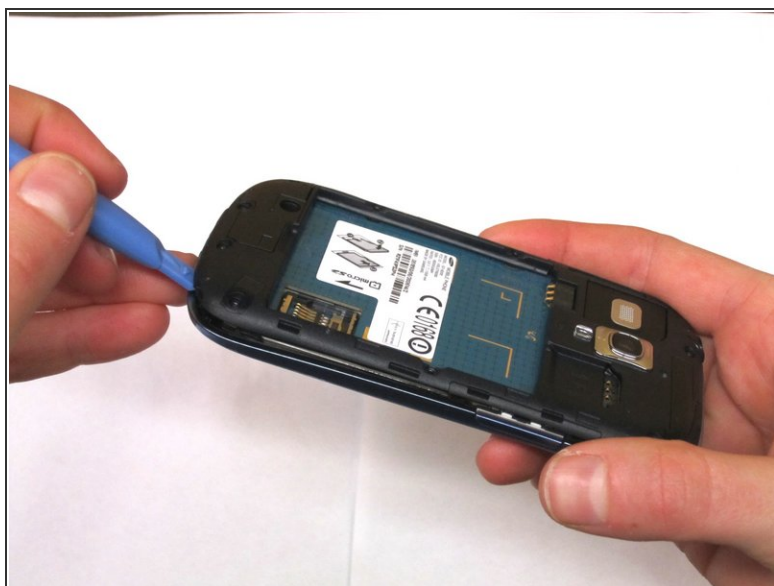


### Step 3 — Removing Screws



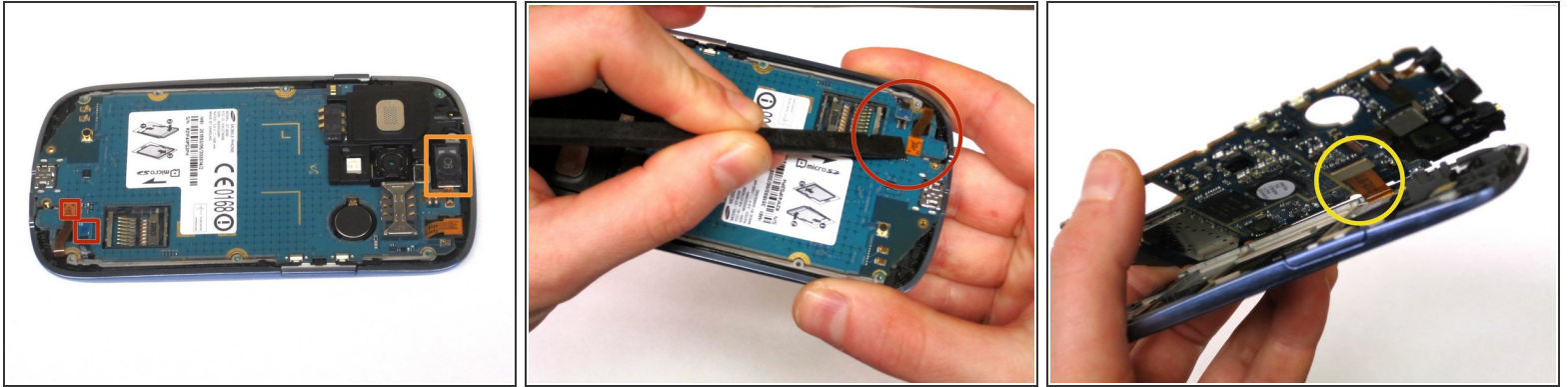
- Use the Phillips #000 Screwdriver to remove the 10, 4mm screws holding the plastic frame in place.

### Step 4



- Using an opening tool, gently separate the plastic framing from the phone.

## Step 5 — Removing Circuit Board



- Unhook the two electrical connections at the bottom of the phone using your fingernail or a spudger.
- Next, use the spudger and tweezers to remove the speaker at the top of the phone.
- Once the 3 components have detached, the circuit board should release from the phone except for 1 connection on the underside.
- Detach this connection using the spudger.

To reassemble your device, follow these instructions in reverse order.