



iRobot Looj 120 Remote Circuit Board Replacement

If you need to replace the circuit board of your iRobot Looj 120, follow this guide.

Written By: Joshua



INTRODUCTION

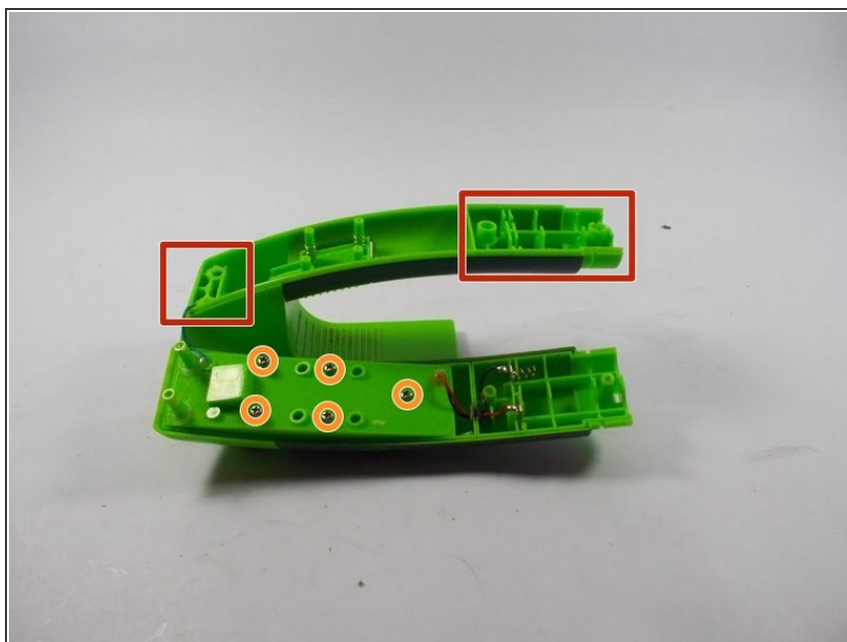
If the iRobot Looj 120 has stopped working and all the motors are okay and the battery is charged, then there may be a problem with the circuit board within the handle. This guide will show you how to replace the circuitry in the remote handle.



TOOLS:

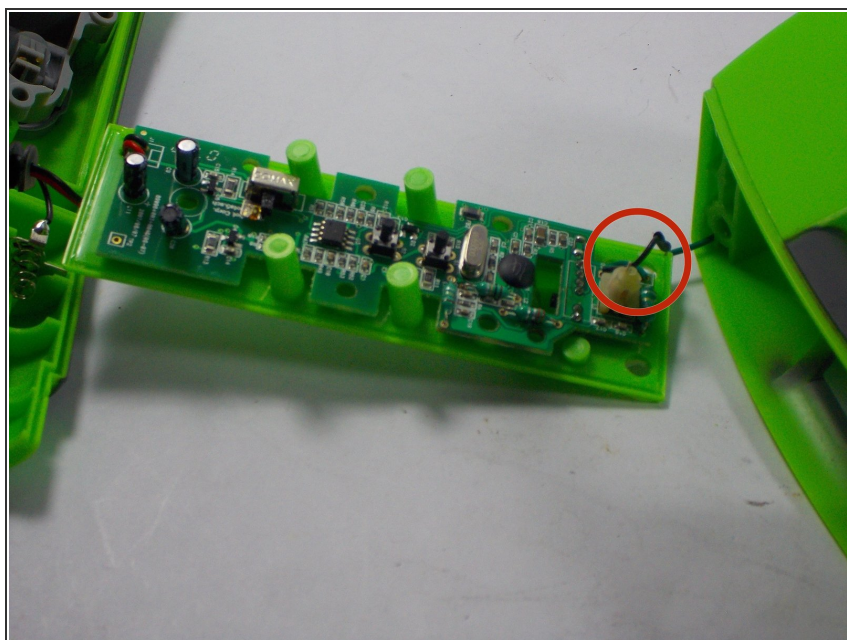
- [Phillips #0 Screwdriver](#) (1)
-

Step 1 — Removing Screws



- Remove the four exterior screws located under controller and on the handle.
- Remove the five screws shown, and then carefully remove top plate. Electrical components are attached to top plate.

Step 2 — Locate Circuitry



- Disconnect circuit board from power leads, and install new circuit board.

To reassemble your device, follow these instructions in reverse order.