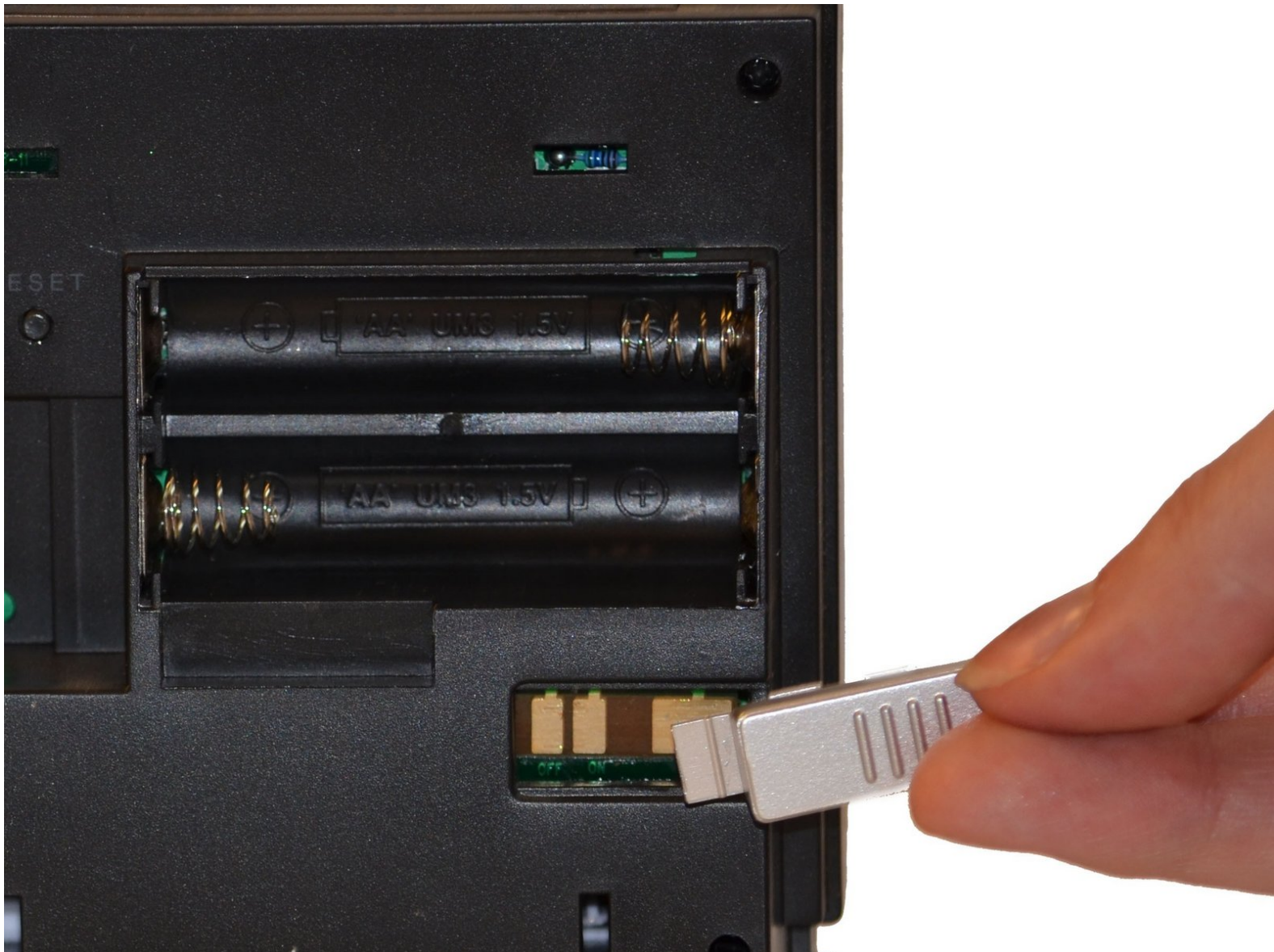




Oregon Scientific RM318PA Power Switch Replacement

This guide will help you to remove the on/off switch and snap it back in place.

Written By: Maxine Holden



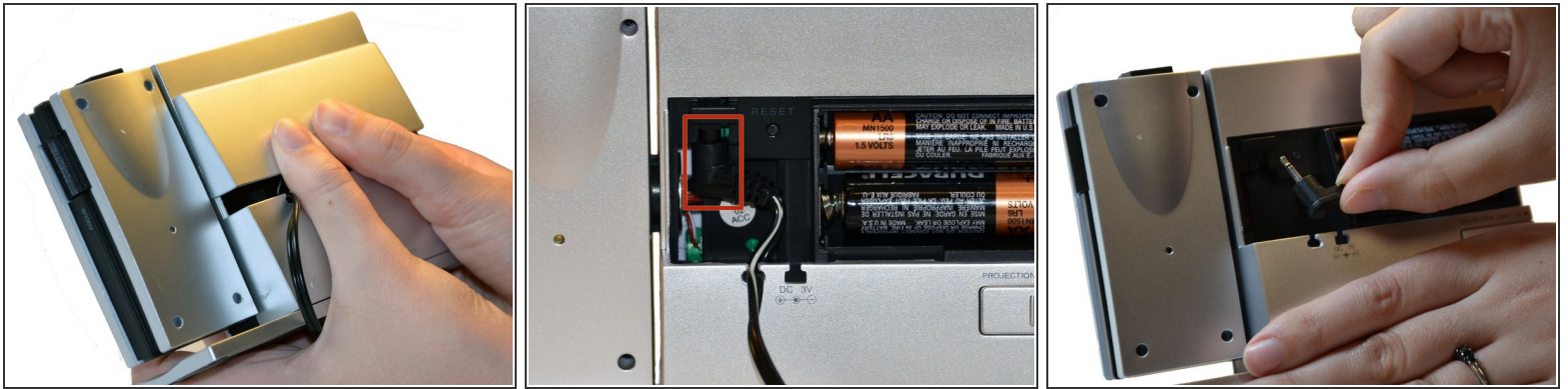
INTRODUCTION

This guide will assist you in removing the back casing of the clock to access the on/off switch and put it back in place.

TOOLS:

- [Phillips #00 Screwdriver](#) (1)
 - [iFixit Opening Tools](#) (1)
-

Step 1 — Battery Compartment Cover



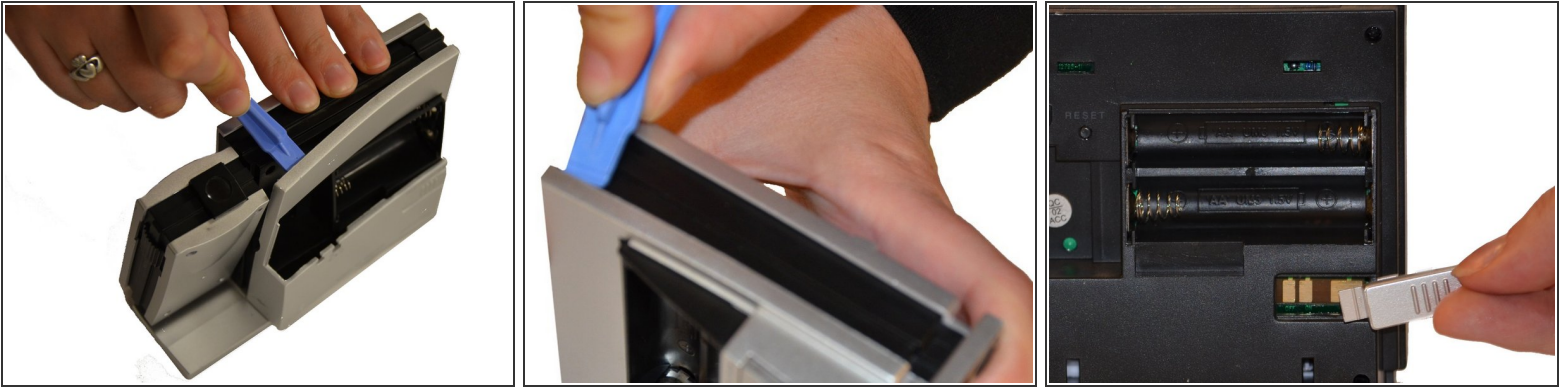
- Hold clock so that the clock face is facing away from you.
- Using your thumbs, push up on the battery cover.
- Once battery cover is removed, pull down on AC Adapter Jack.

Step 2 — Batteries



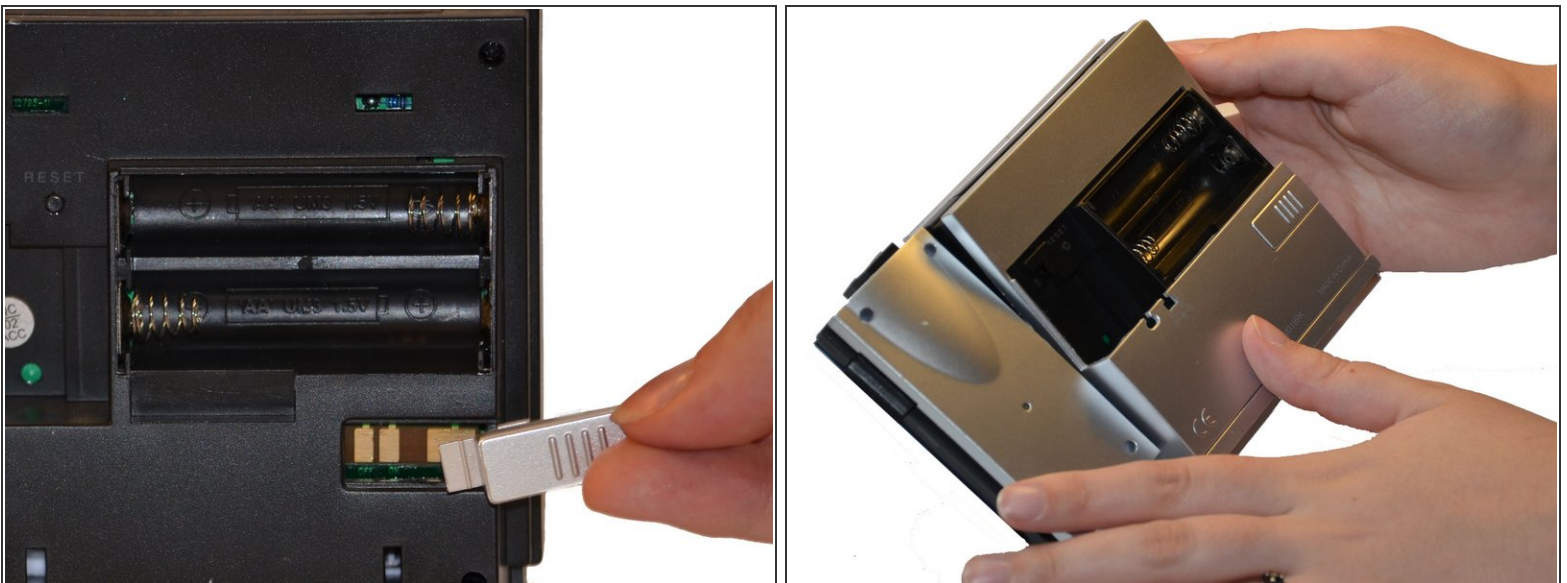
- Use one hand to stabilize the clock.
- Using your other hand, push batteries toward spring and pull out at an angle.

Step 3 — Back of Projection Clock



- Use a Plastic Opening Tool to pry off the silver casing on the back.
- Pry at the top of device.
- Once the back is open at the top, pry at the side of the device closest to the battery compartment.
- On/Off switch should come off with casing.

Step 4 — On/Off Switch



- Insert switch into slot as shown in picture. Push in until you hear a "click."
- Replace the back of the clock by pressing cover back into place.

To reassemble your device, follow these instructions in reverse order.