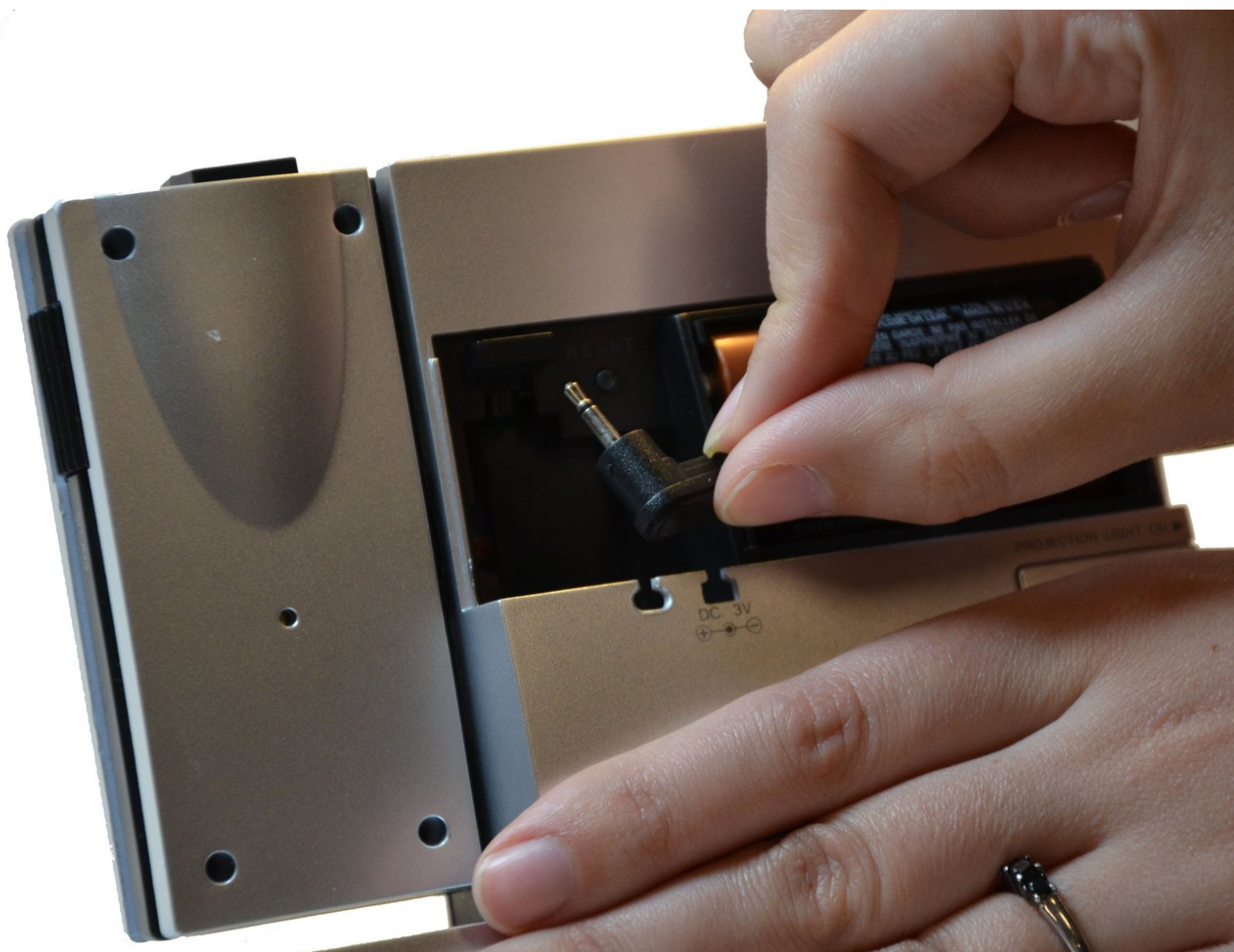




Oregon Scientific RM318PA A/C Power Adapter Replacement

This guide will help you to replace a faulty A/C Power Adapter.

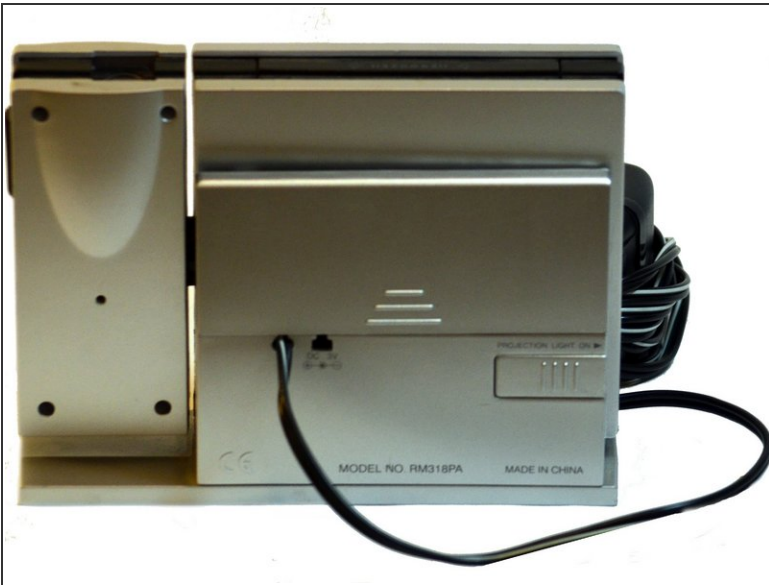
Written By: Maxine Holden



INTRODUCTION

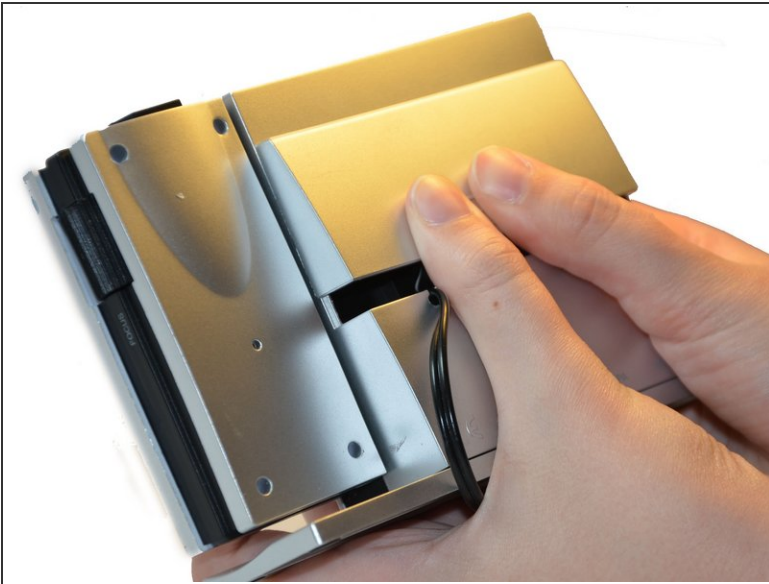
The A/C Power Adapter enables the projector to be on continuously. Replacing this item could fix a malfunctioning projector.

Step 1 — A/C Power Adapter



- To access the A/C Power Adapter connection, remove the battery cover, located on the back of the clock.

Step 2 — Battery Compartment Cover



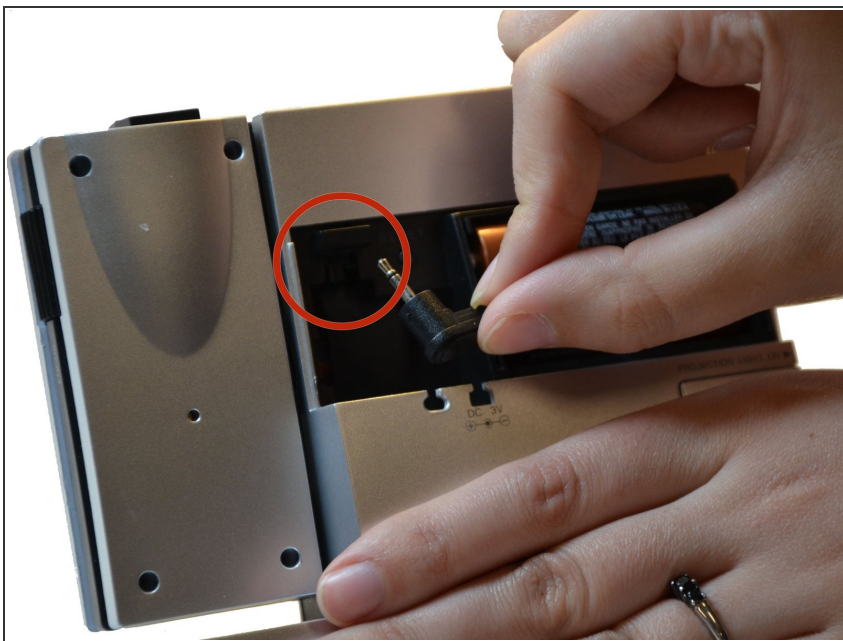
- To remove the battery compartment cover, slide the cover up towards the top of the clock while applying slight pressure.

Step 3 — A/C Power Adapter Socket



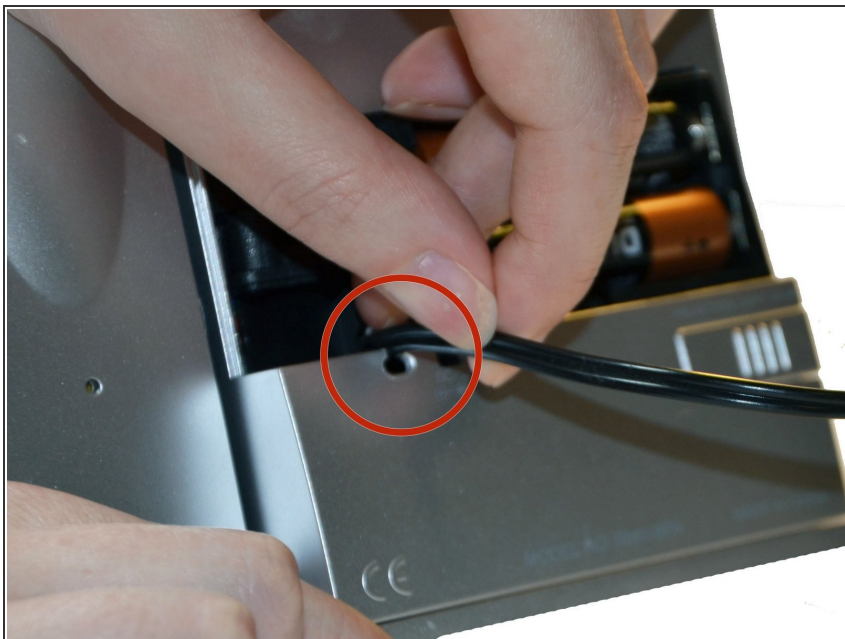
- Gently pull the A/C Power Adapter from the socket, to the left of the batteries.

Step 4 — A/C Power Adapter Tip



- To plug in the A/C Power Adapter, insert the tip into the socket, located to the left of the batteries, and press firmly.
- ⚠ Be sure that you are inserting an A/C Power Adapter and not a D/C Power Adapter. Inserting the improper cord could cause damage to the device.

Step 5 — A/C Power Adapter Cord



- Once the A/C Power Adapter tip is inserted in the socket, guide the cord through a notch directly below.

To reassemble your device, follow these instructions in reverse order.