



Memorex 2Xtreme MP3830-01 LCD Display Replacement

Without a working LCD display, the user will be...

Written By: Meghan



INTRODUCTION

Without a working LCD display, the user will be unable to read the various information the device needs to display.

TOOLS:

[Phillips #1 Screwdriver](#) (1)

Step 1 — Remove Bottom Shell



- ❗ Before disassembly, ensure that the boombox is powered off, unplugged and any batteries have been removed from the device.
- Begin by turning the boombox over so that the bottom is facing up.
- ⚠ When turning the boombox over, the antenna will be pointing down. Take care that the antenna is not damaged when opening the device.
- Your boombox will have a total of 12 Phillips screws on the bottom. The location of the screws needed to remove the bottom panel are circled in red in the image to the left.
- Remove the 12 screws with a Phillips head screwdriver on the bottom panel.
- ★ One screw, in the upper left corner, does not need to be removed to disassemble the device. This screw is for the antenna.

Step 2

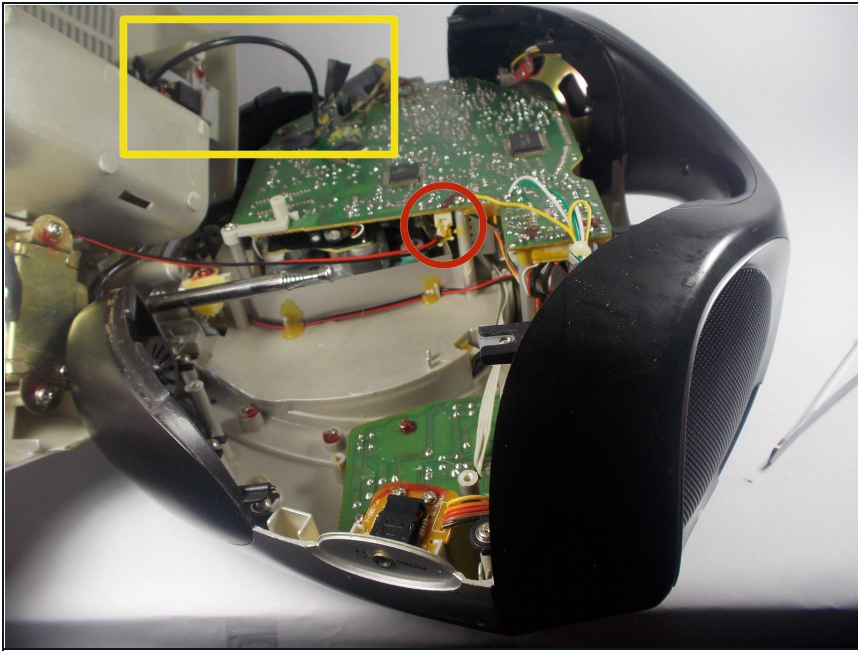


- With all 12 screws removed, it is possible to detach the plastic bottom cover from the top half of the boombox.
- Push the bottom shell back slightly before pulling it up. The plastic bottom will lift up directly but there is a lip that fits under the black handle that must first be exposed, as seen in the image on the left.

★ The boombox's antenna must be straight in order for the bottom cover to be pulled up.

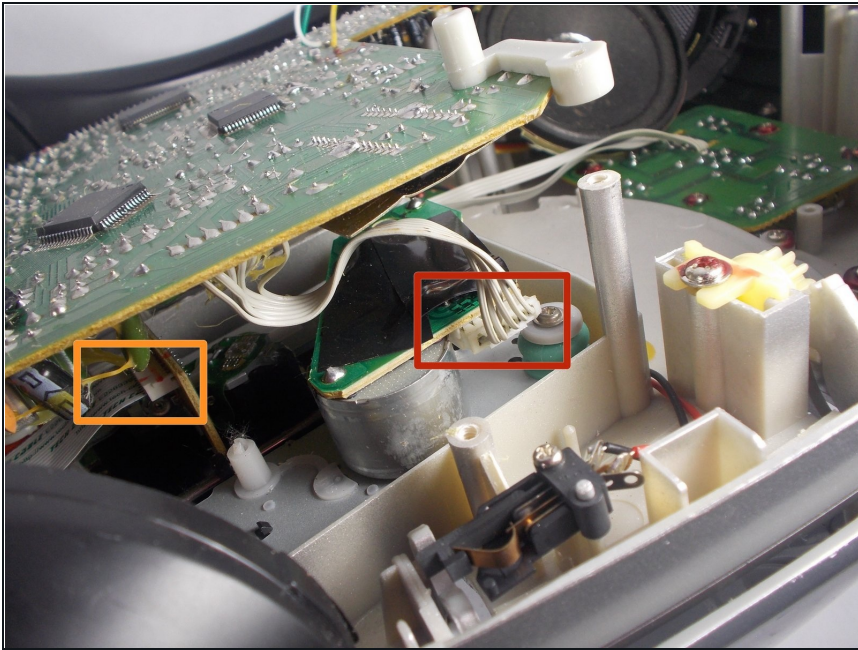
⚠ Several wires run between the bottom half and top half of the boombox. Take care not to damage or otherwise tear the wiring when opening the device.

Step 3



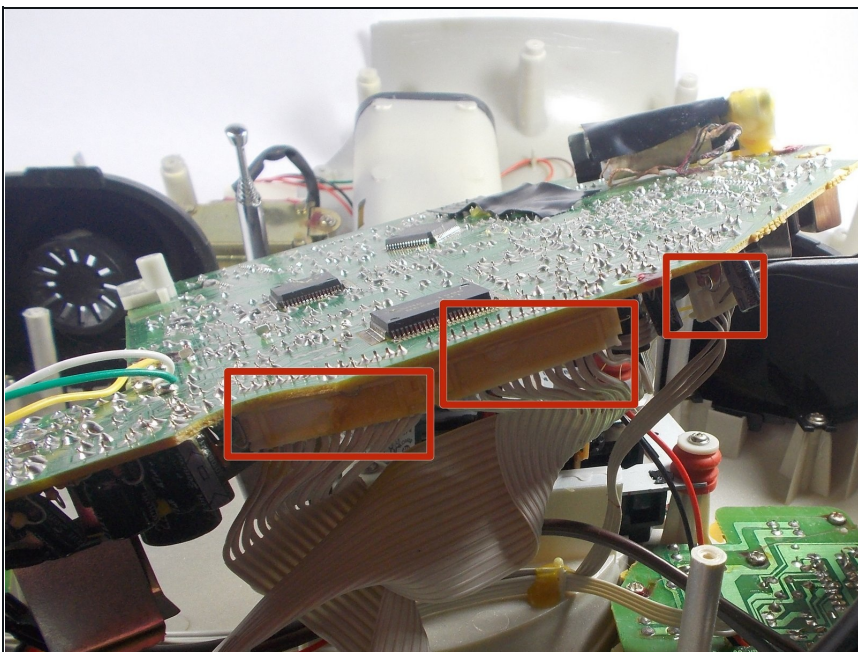
- The boombox should now be in two separate pieces, connected only by two wires.
 - Disconnect the red and black wires by gently grasping its white plastic end and pulling it out of its socket (circled in red on the image to the left).
 - Additionally, the black wire highlighted in the square yellow box in the image to the left is taped onto the main board. This tape may be safely removed to give the wire more slack when separating the two halves of the boombox.
- ① The power supply and antenna are located on the bottom half of the boombox while the headphone jack, function buttons and lcd screen are located on the top half.

Step 4 — LCD Display



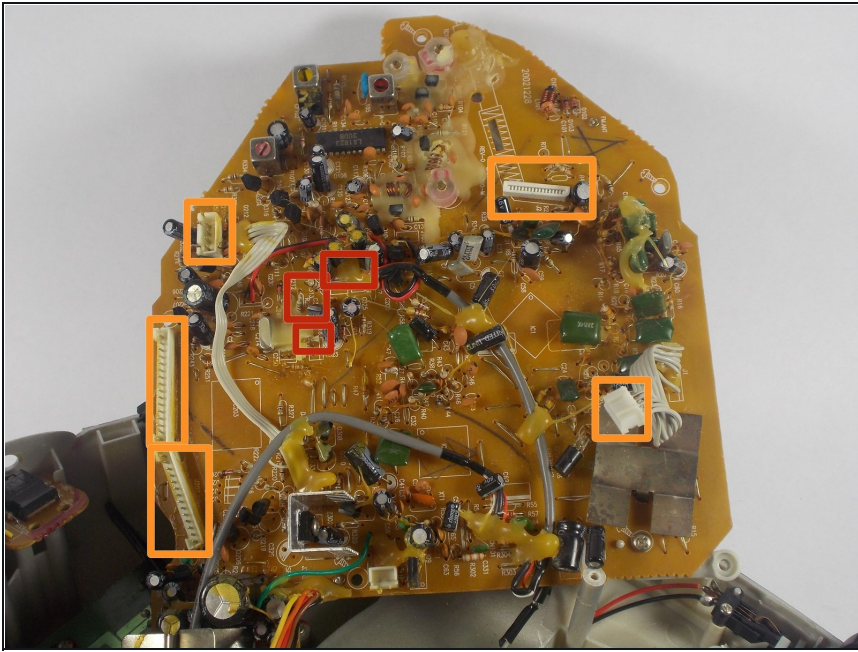
- There are a lot of connections hidden underneath the Main board.
- This white clip, circled in red, is the first one that needs to be removed.
- The small ribbon cable, circled in orange, is the next cable that needs to be removed.
- ① These connections require a lot of force to remove. Don't be afraid to really pull at them.

Step 5



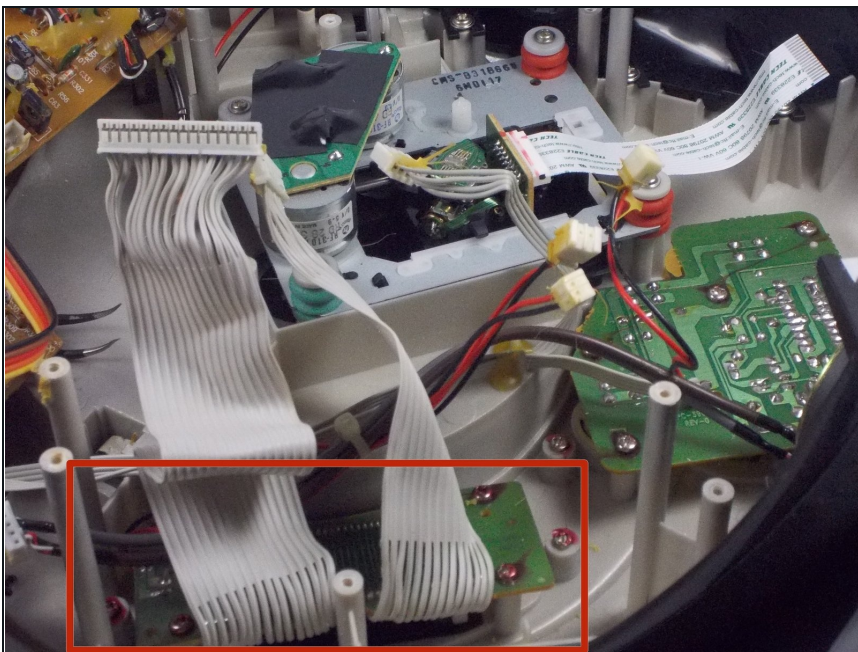
- The three connectors marked in the picture need to be removed.
- ① There may be a lot of glue covering these. If the connector does not come loose, the glue can be peeled off or scraped off with a sharp object.

Step 6



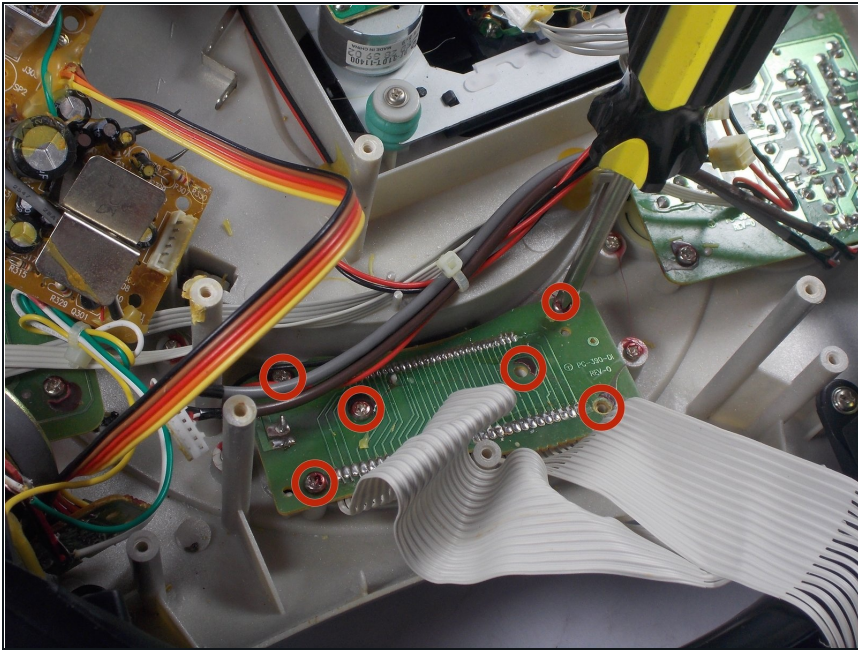
- There are few more connections left to remove from the board. These spots are marked in red.
- The orange squares are cables that should have already been removed.
- ① It is much easier to remove the middle clips using a set of durable [tweezers](#).

Step 7



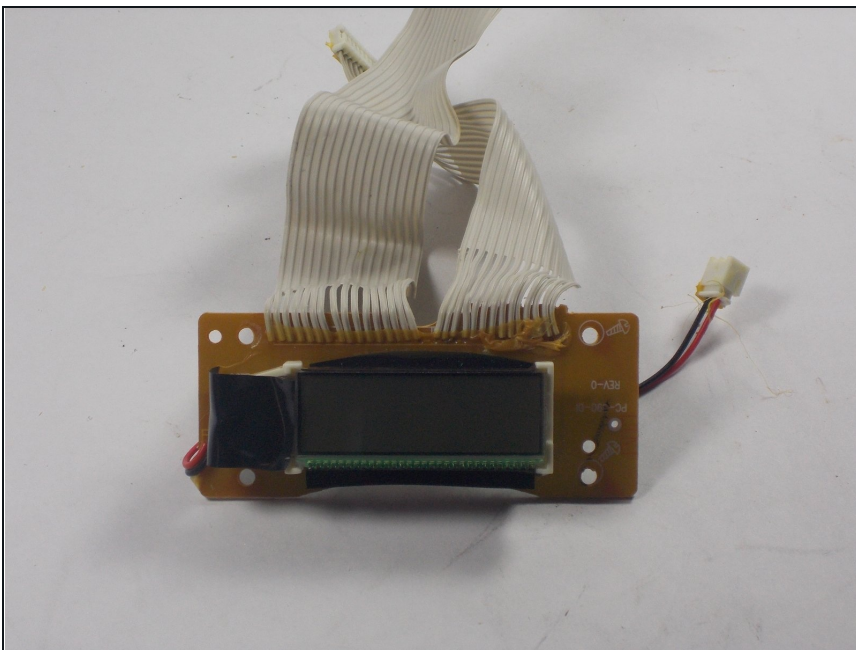
- After those last few cables, the main board should be entirely disconnected from the top half of the boombox.
- Underneath the main board should look something like this.
- The location of the LCD, the focus of the next few steps, is circled in yellow.

Step 8



- Move the cables away from the back of the small LCD board.
- There should be six screws holding it in place.

Step 9



- After removing the final screws, the LCD will come loose.
- Simply pull it up and out.

To reassemble your device, follow these instructions in reverse order.

