



Toshiba Satellite 1415-S105 Hard Drive Replacement

Toshiba Satellite 1451-S105 hard drive removal.

Written By: Kiril Lange



INTRODUCTION

Replacing or upgrading the hard drive is a simple procedure that results in improved storage and functionality.



TOOLS:

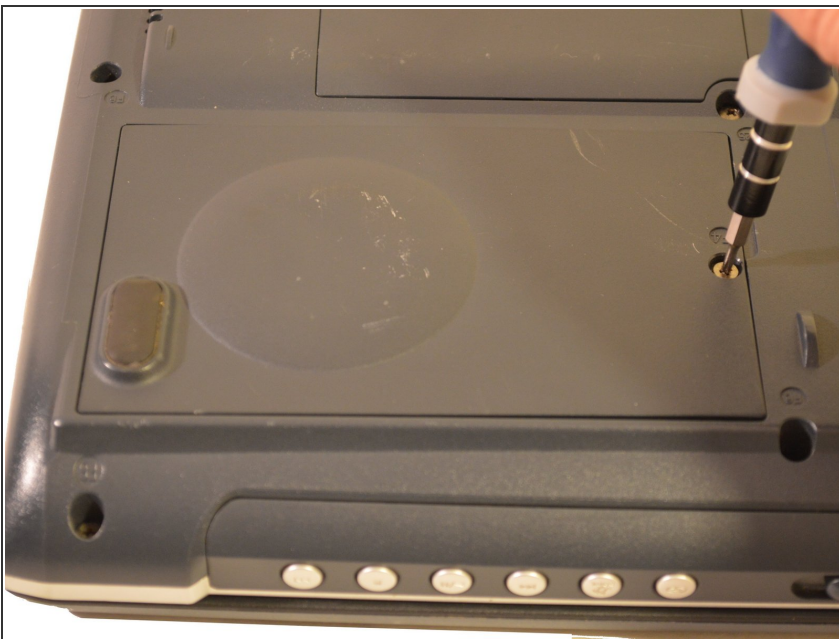
- [Phillips #0 Screwdriver](#) (1)
 - [Spudger](#) (1)
-

Step 1 — Hard Drive Cover



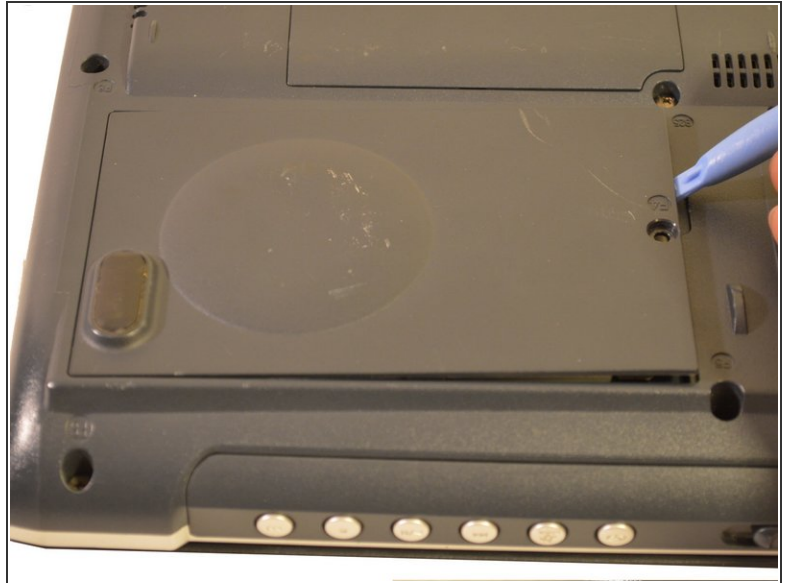
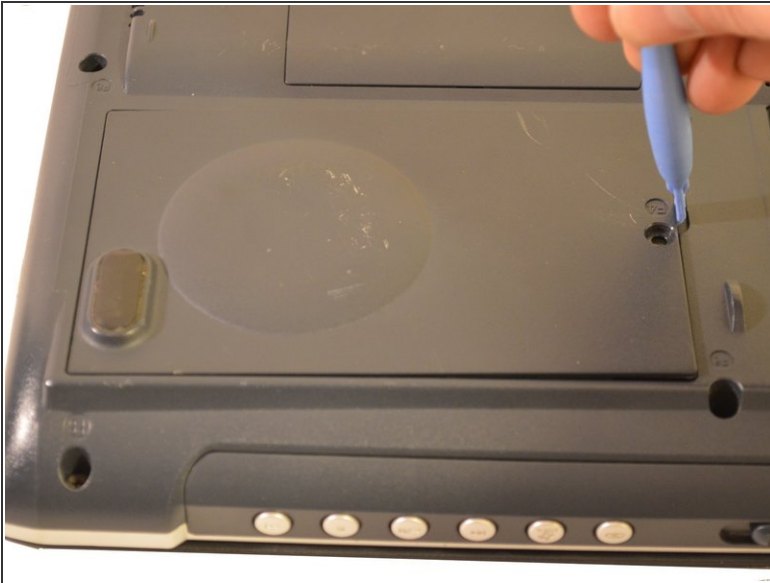
- The hard drive is located on the front left of your laptop.

Step 2



- Unscrew the single small screw labeled F4 located on the right side of the panel.

Step 3



- Insert a spudger into the indent near the screw to pry open and remove the cover.

Step 4 — Hard Drive



- Use a spudger to disconnect the hard drive by shifting the entire drive to the right.

Step 5



- Lift the hard drive up and out of the laptop.

To reassemble your device, follow these instructions in reverse order.