



PlayStation 3 Slim Blu-ray Disc Drive Replacement

Replace a broken Blu-ray drive.

Written By: Andrew Bookholt



INTRODUCTION

Use this guide to replace your PS3's Blu-ray disc drive. The drive is a proprietary Sony unit.



TOOLS:

- [Metal Spudger](#) (1)
- [Phillips #1 Screwdriver](#) (1)
- [Spudger](#) (1)
- [T8 Torx Security Bit Screwdriver](#) (1)



PARTS:

- [Sony PlayStation 3 Slim Blu-ray Disc Drive \(KEM-450AAA\)](#) (1)
- [Sony PlayStation 3 Slim Blu-ray Disc Drive \(KEM-450DAA\)](#) (1)
- [Sony PlayStation 3 Slim Blu-ray Disc Drive \(KEM-450EAA\)](#) (1)
- [Sony PlayStation 3 Slim Blu-ray Drive Power Cable](#) (1)
- [Sony Playstation 3 Slim Blu-ray Drive Data Cable](#) (1)

Step 1 — Top Cover



- Turn the PS3 over and lay it on its backside.
- Carefully peel the warranty sticker up off the lower case to reveal a hidden screw cover.
- ☑ To avoid activating the **VOID** that may come up, heat the sticker carefully to remove and replace it cleanly.

Step 2



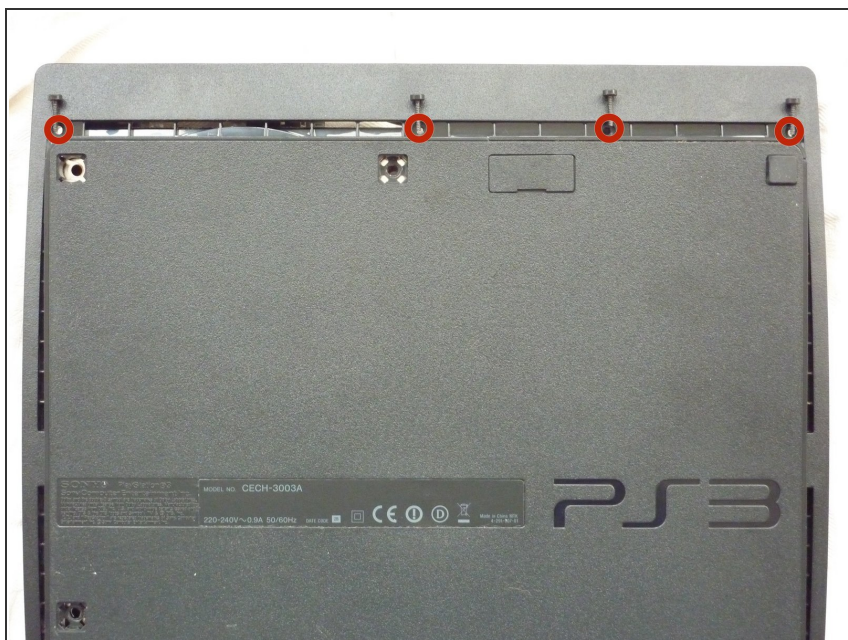
- Use the flat end of a metal spudger to pry up the seven screw covers around the edge of the lower case.

Step 3



- Remove the seven 37 mm Phillips screws securing the top cover to the lower case.

Step 4



- Remove the four 13.3 mm T8 security Torx screws beneath the Blu-ray drive opening. (Some models may only have three screws)

Step 5



- Lift the top cover from its rear edge and rotate it toward the front of the PS3.
- Lift the top cover off the PS3.

Step 6 — Power Supply



- Squeeze the AC inlet connector's locking mechanism and pull straight up to disconnect it from the power supply.

Step 7



- Pull the DC-Out cables straight up to lift their connector up and out of its socket on the power supply.

Step 8



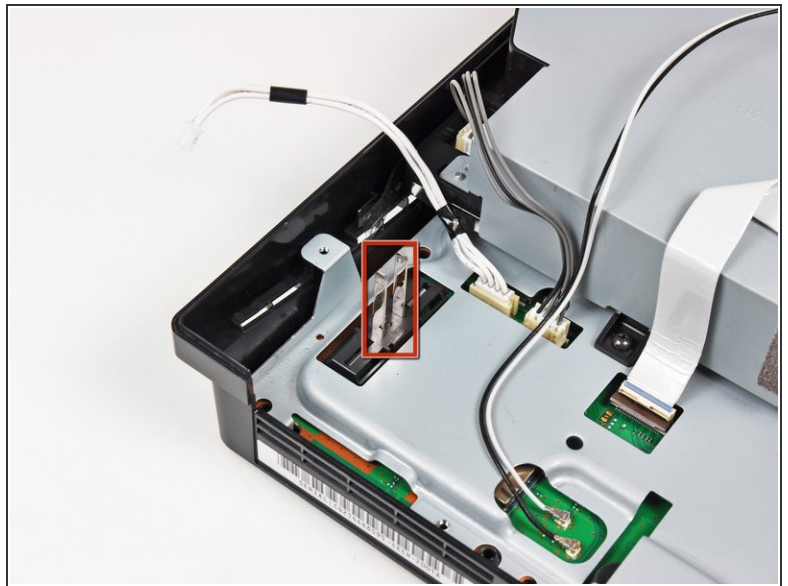
- Remove the two 7.6 mm Phillips screws securing the power supply to the lower case.

Step 9



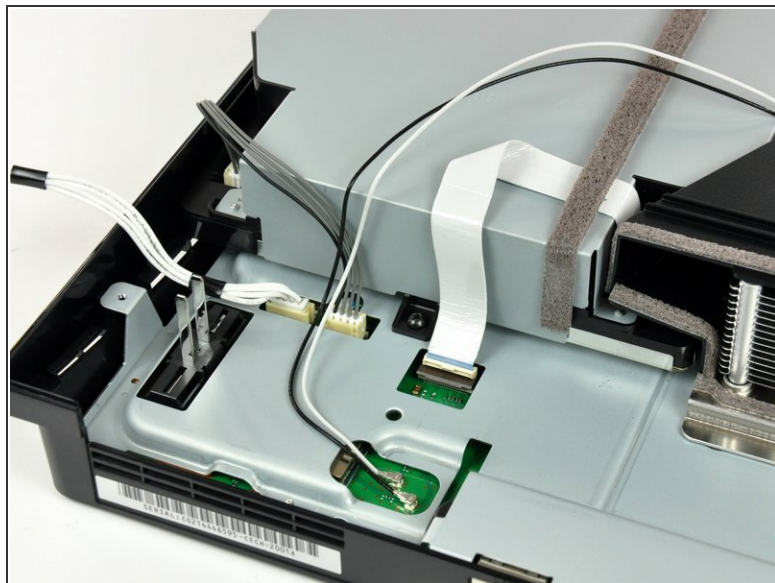
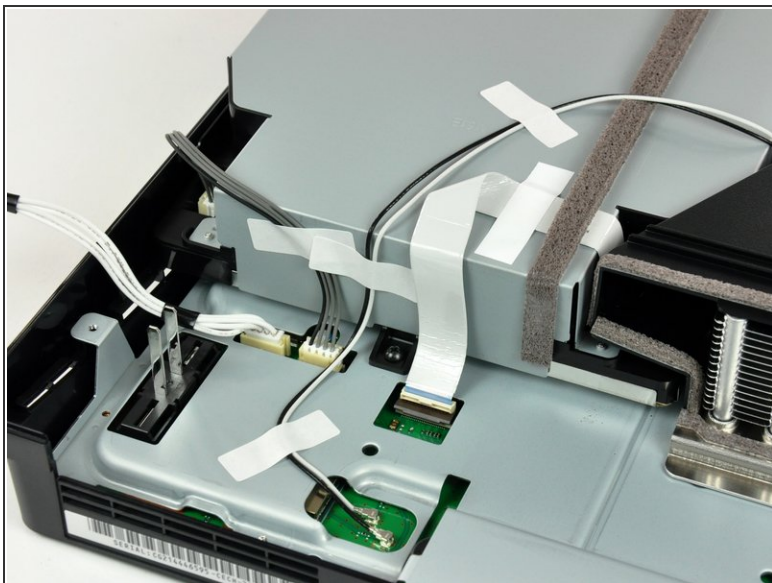
- Lift the power supply upward from its left edge as viewed from the front of the PS3.

Step 10



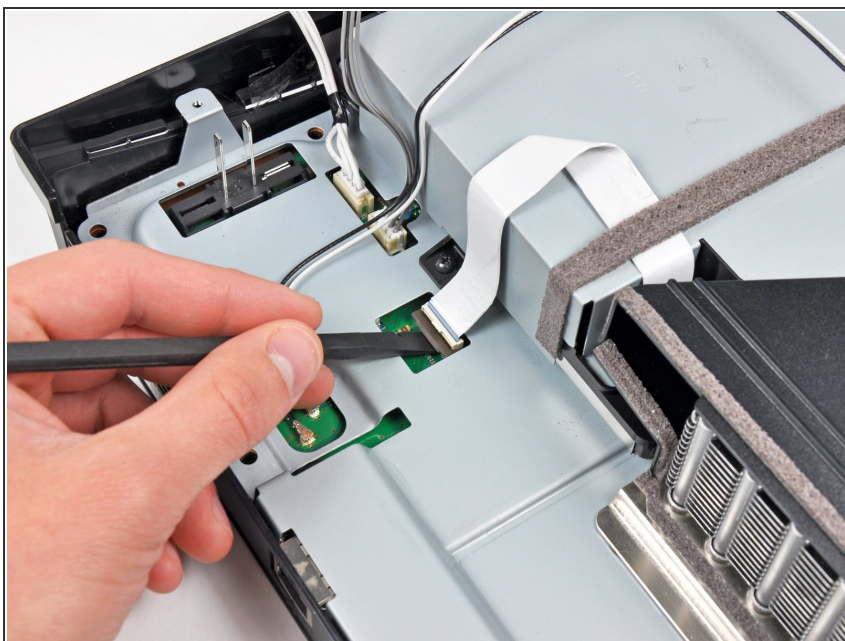
- Continue to lift the left edge of the power supply until it lifts off the two metal posts shown in the second picture.
- Remove the power supply from the PS3, minding any cables that may get caught.

Step 11 — Blu-ray Disc Drive



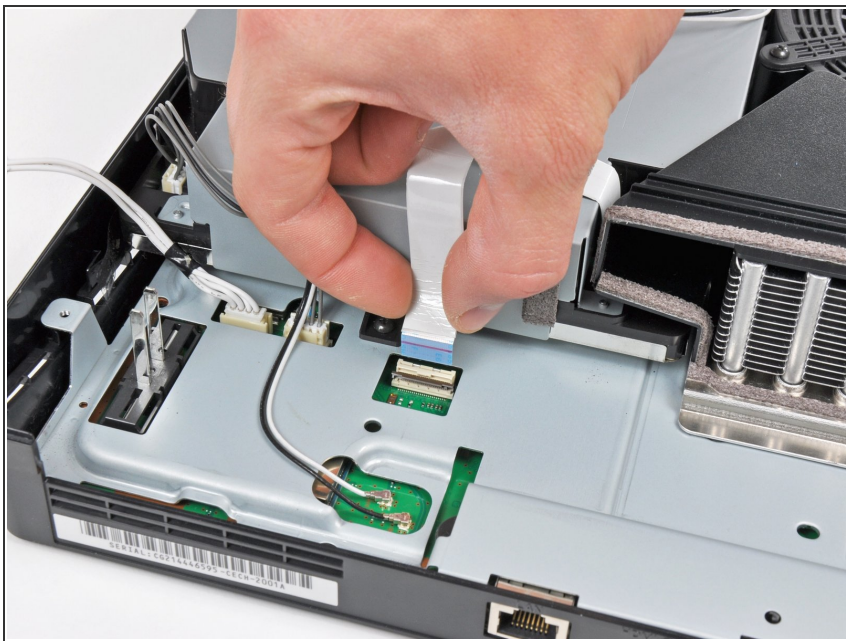
- ⓘ If present, remove the pieces of tape securing the cables to the body of the Blu-ray drive.

Step 12



- Use the flat end of a spudger or your fingernail to flip up the retaining flap on the Blu-ray ribbon cable socket.
- ⚠ Be sure you are prying up on the movable retaining flap, **not** the socket itself.

Step 13



- Pull the Blu-ray ribbon cable straight up and out of its socket.

Step 14



- Pull the Blu-ray power cable straight up to lift its connector out of the socket on the Blu-ray drive.

Step 15





- Remove the single 9.5 mm Phillips screw securing the Blu-ray drive to the lower case.

Step 16



- Lift the Blu-ray drive slightly by its right edge to dislodge the control board from its housing.
- Remove the Blu-ray drive from the PS3.

 After you reinstall the Blu-ray drive, be sure the control board is firmly seated in the lower case before proceeding.

 If replacing the Blu-ray drive with a new drive, [swap the circuit board from your old drive into the new drive.](#)

To reassemble your device, follow these instructions in reverse order.