



Written By: Andrew Gillis



Page 1 of 5

INTRODUCTION

This guide will teach you how to access your tablet's battery, and how to remove it. Reverse these steps with a new battery to replace a broken one.



TOOLS:

- [iFixit Opening Tools](#) (1)
- [Phillips #00 Screwdriver](#) (1)



PARTS:

- [Toshiba Excite 10 Battery](#) (1)

Step 1 — Remove SD Card



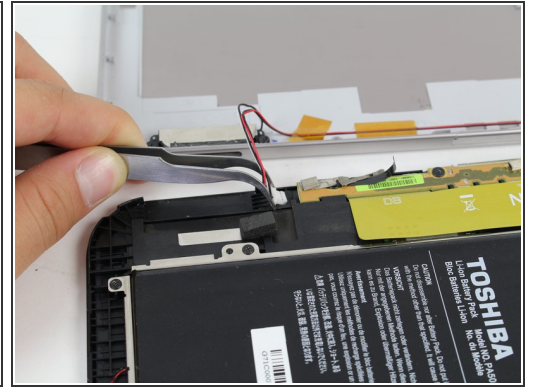
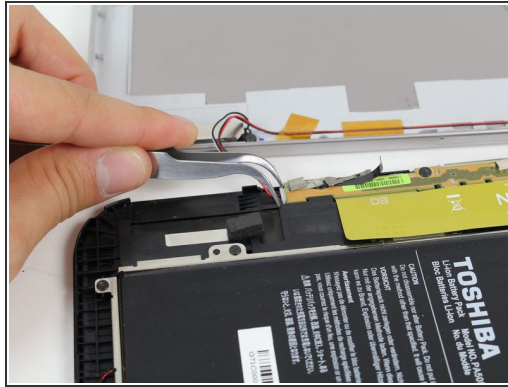
- Remove the SD card from the SD card slot.

Step 2 — Open the Tablet



- Use the opening tool to separate the front and rear panels by slipping the tool underneath the screen edge and sliding it around the entire device.
- ⓘ Make sure you unclip all of the clips on the back panel, or pulling it off will be difficult and may damage the tablet.

Step 3 — Disconnect Speaker Wires



- Remove the speaker cable from its socket by gripping both sides of the white connector piece with tweezers and pulling straight out.

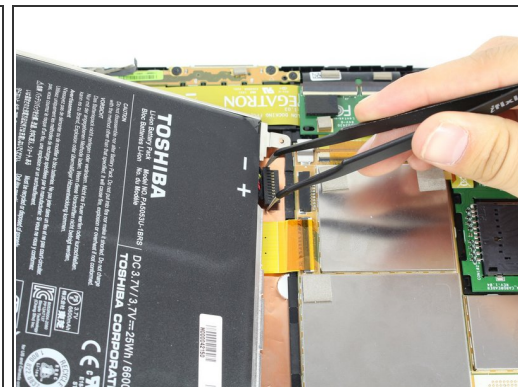
⚠ Be careful not to rip the wires out of the white connector piece.

Step 4 — Remove Screws



- Using a #00 Phillips screwdriver, remove the following screws:
 - Five 3mm Phillips #00 screws

Step 5 — Remove Battery Cable



- Gently lift the battery, pulling away from the tab holding it in place at the bottom.
- While holding the battery up, use a pair of tweezers to remove the battery cable from its connector.

To reassemble your device, follow these instructions in reverse order.