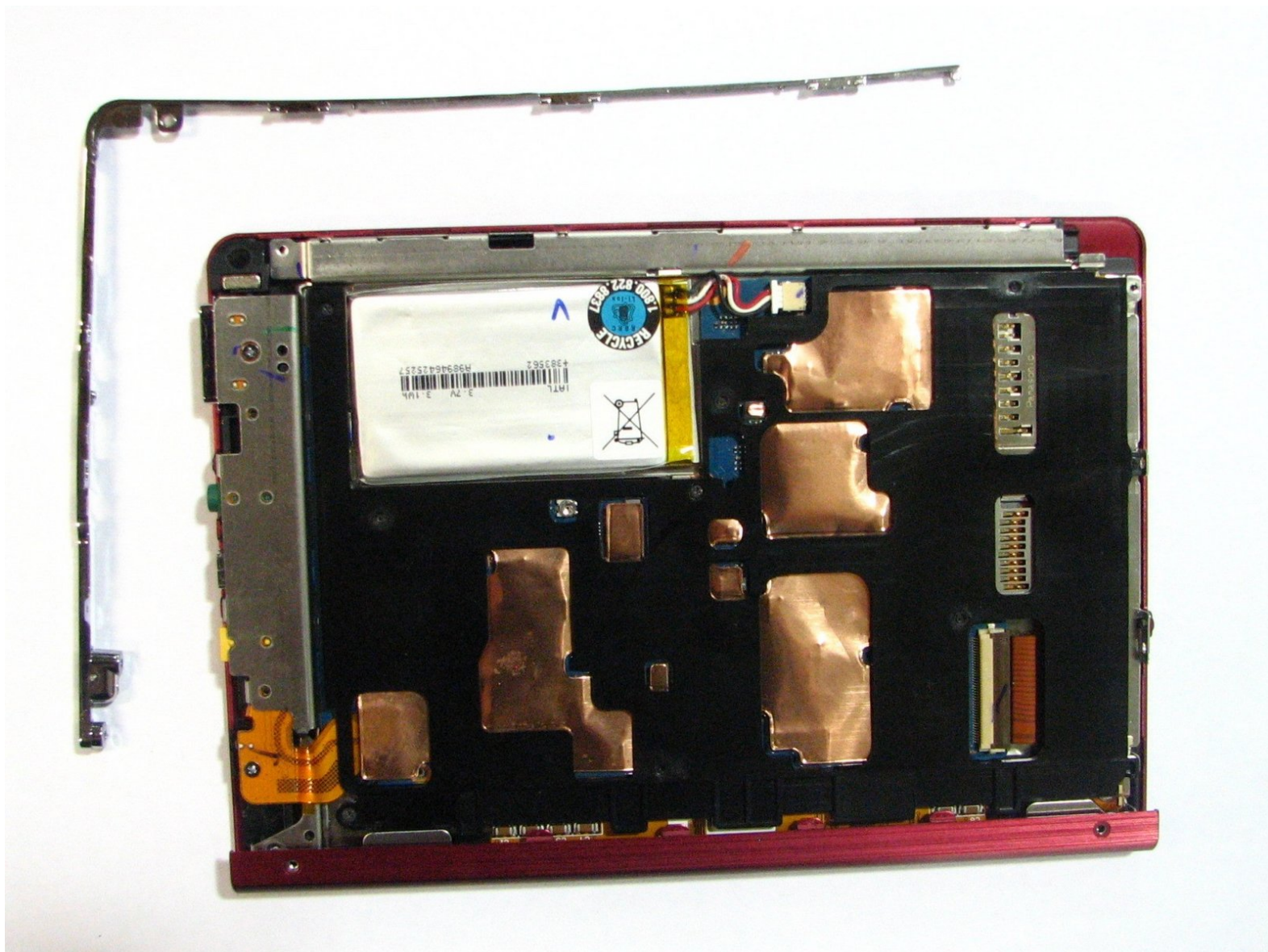




Disassembling Sony Reader Touch Edition PRS-600 Side and Bottom Panel

This guide will show the reader how to remove the side and bottom panels of the device

Written By: Zachary Jeffers





TOOLS:

- [Phillips #000 Screwdriver](#) (1)
 - [Spudger](#) (1)
-

Step 1 — Back Panel



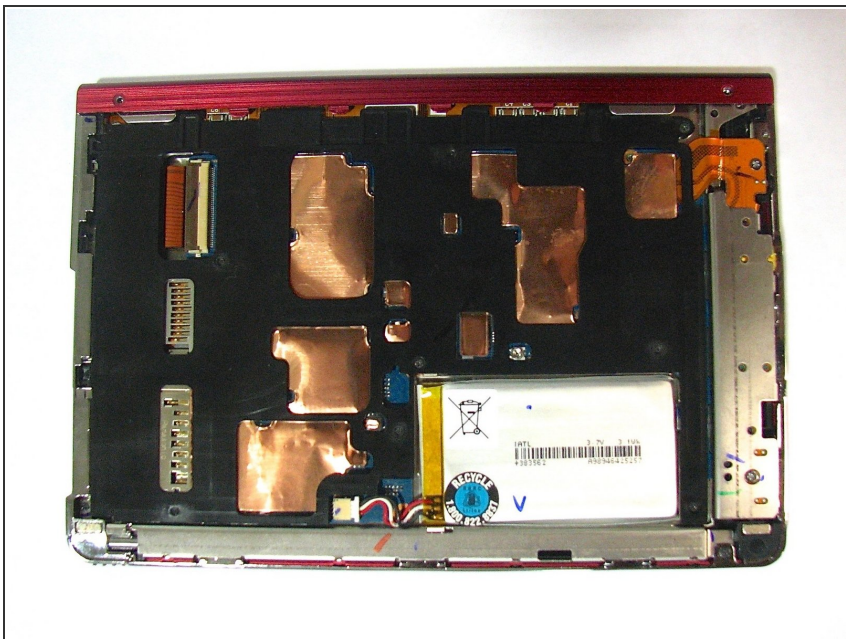
- Using the Phillips head screwdriver PH000, remove the two 1.4 mm screws that are located on the backside of the device.

Step 2



- Slide the back cover off by pushing it to the left, away from the side that held the screws.
- Remove the cover.

Step 3



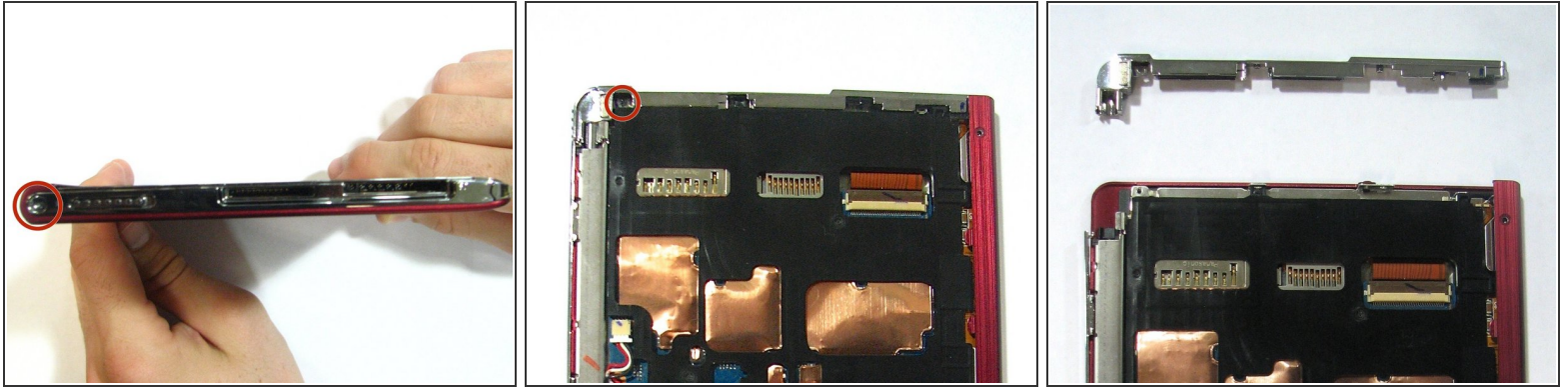
- This is what the device should look like once the back cover panel has been removed.

Step 4 — Power Button



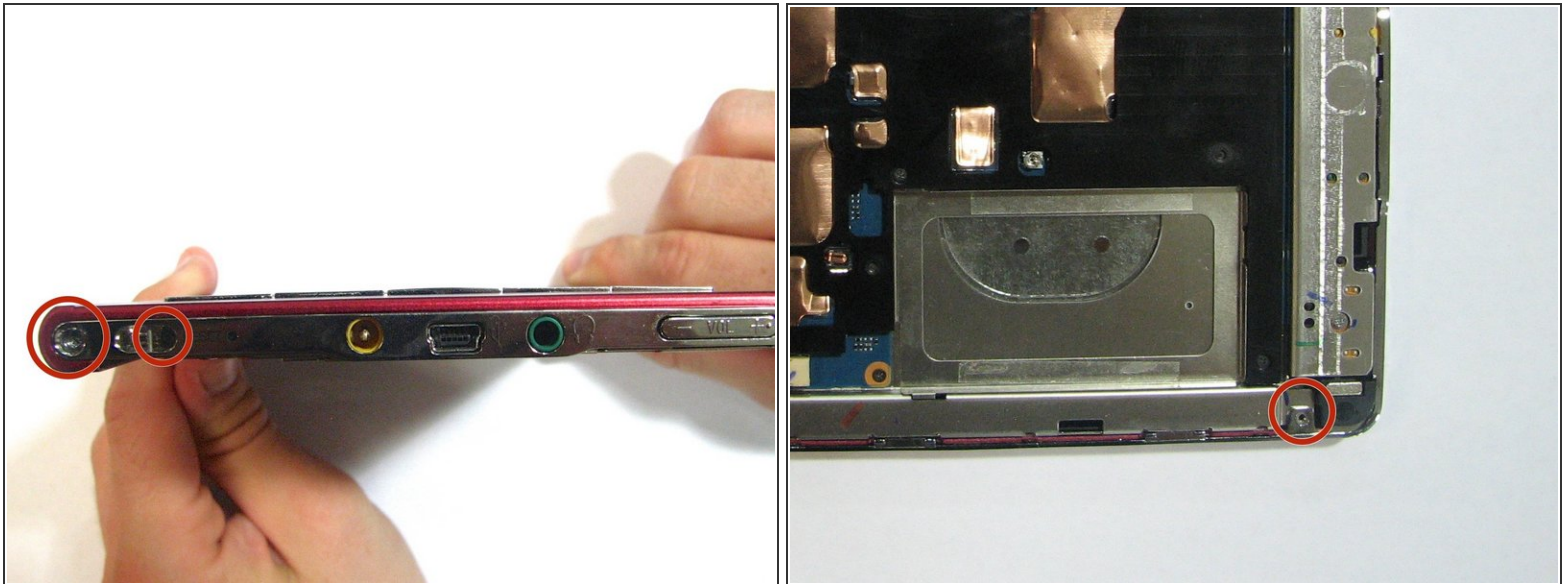
- Remove the stylus from the device.

Step 5



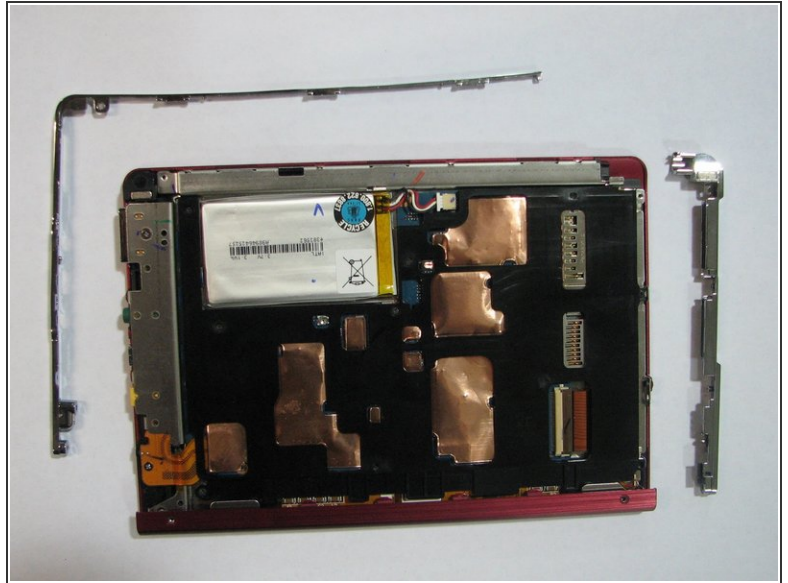
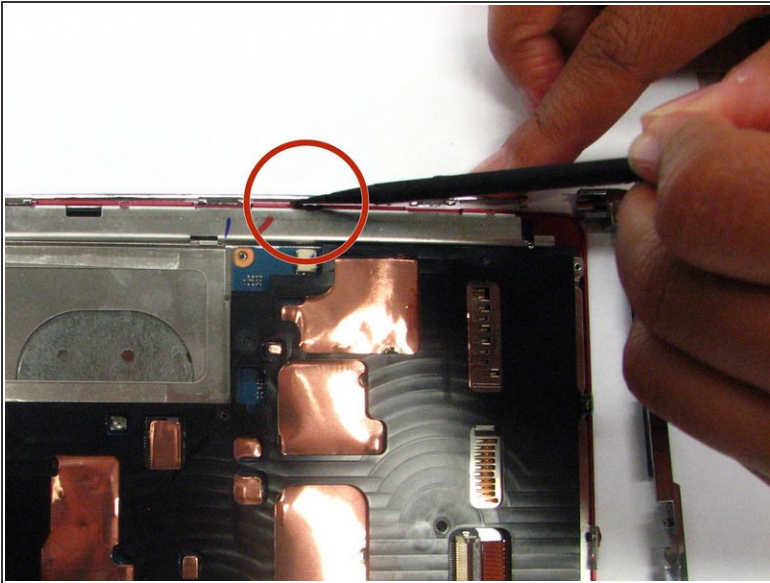
- Using the Phillips screwdriver remove the 1.4 mm screw from the top panel.
- Using the same screwdriver, remove the 1.4 mm screw from the back of the device.
- Pry apart off the top panel of the device.

Step 6 — Side and Bottom Panel



- Using a Phillips head screwdriver, remove the two 1.4 mm screws from the bottom panel of the device.
- Using the same screwdriver, remove the 1.4 mm screw that is located on the back of the device.

Step 7



- Pull the panel away from the device. You may have to use the flat end of the spudger to remove the side portion of the panel because it will be glued in place.

To reassemble your device, follow these instructions in reverse order.