



Datawind Ubislate 7ci Battery Replacement

Designed as a low-cost tablet for students in...

Written By: Mekides



INTRODUCTION

Designed as a low-cost tablet for students in India, Datawind's Ubislate 7CI sells for about \$35, to students in India, with the price subsidized by the government. The device is 7.2 by 4.8 by .4 inches (HWD) and weighs 11.2 ounces.

With continuous use, the tablet's battery may wear out, impacting its efficiency and your study routine. When the battery wears out, the tablet discharges quickly, requiring frequent recharging to continue operating.

Before proceeding with this guide, ensure that the environment is dry and free of any potential water spills. Water can cause severe damage to the tablet's sensitive electronics, rendering it unusable. Additionally, make sure the tablet remains turned off throughout the execution of this guide.

When removing certain internal components of the tablet, be cautious to keep other parts in place. Exercise caution when removing the black tape in Step 3 to avoid accidentally detaching the tablet's camera.

When removing the battery in Step 4, apply gentle pressure to avoid damaging it. The battery is quite thin and somewhat fragile. Excessive pressure could lead to breakage and the potential release of dangerous chemicals onto your device and hands.

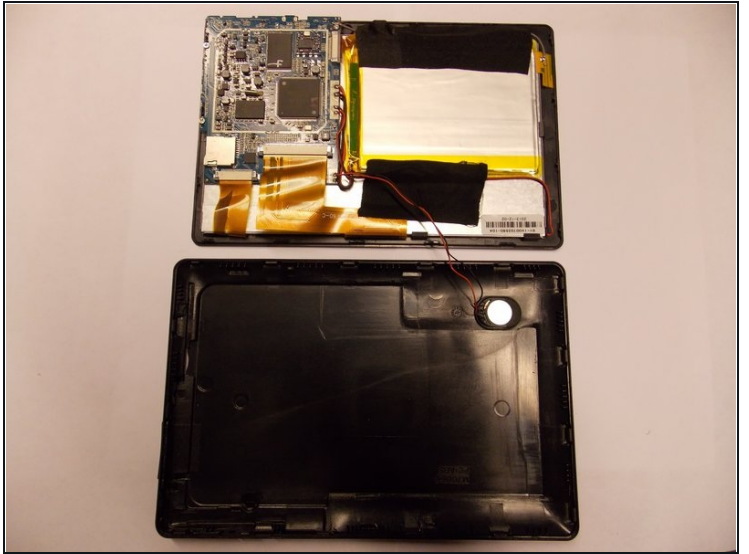


TOOLS:

[iFixit Opening Tool](#) (1)

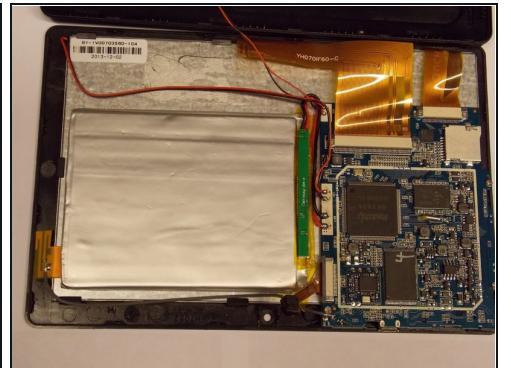
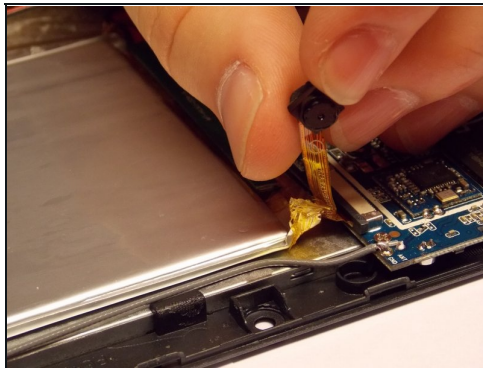
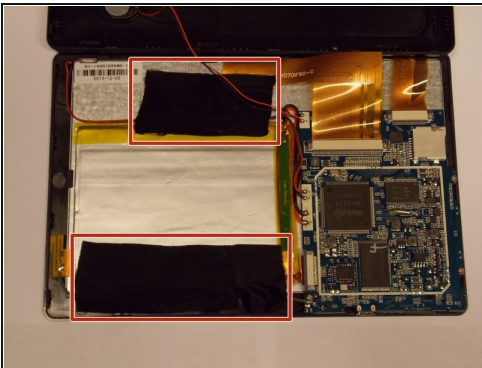
[Soldering Iron 60w Hakko 503F](#) (1)

Step 1 — Battery



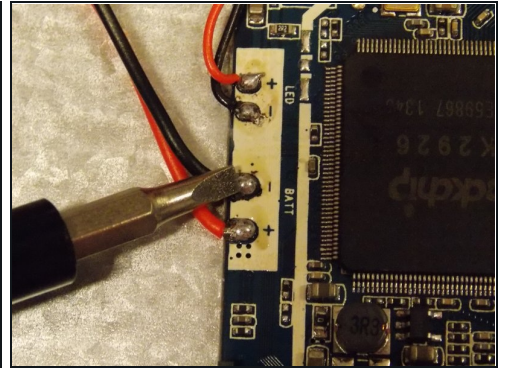
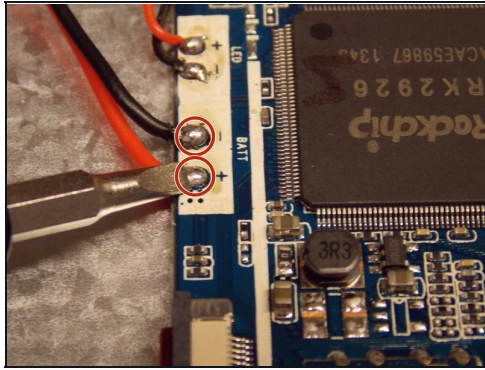
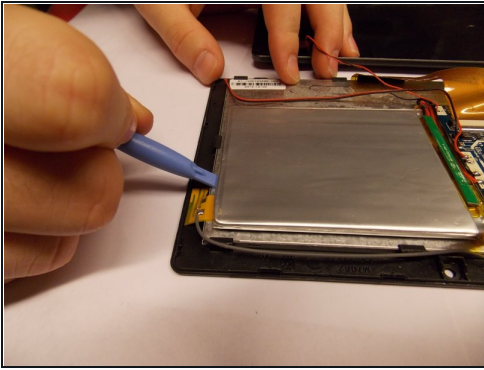
- Run your prying tool along the front edge of the device to pop off the front cover.
- Once the halves are separated your device should look like this.
- ⓘ Be careful of the device's small wiring when separating the two halves.

Step 2



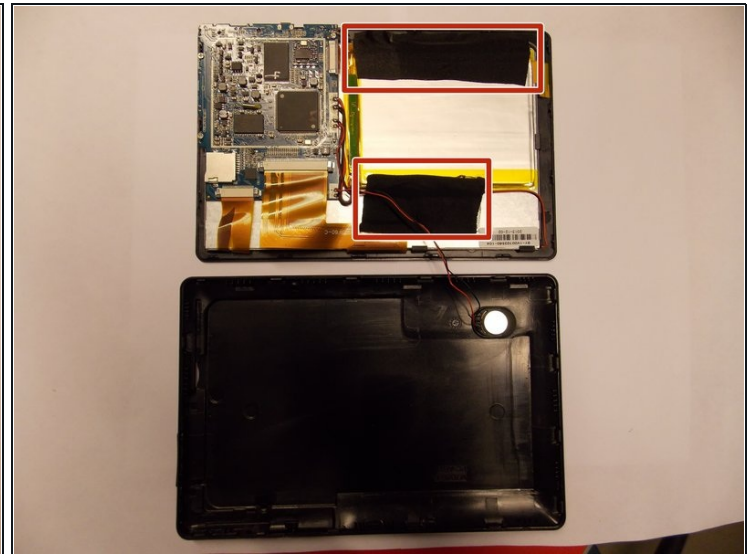
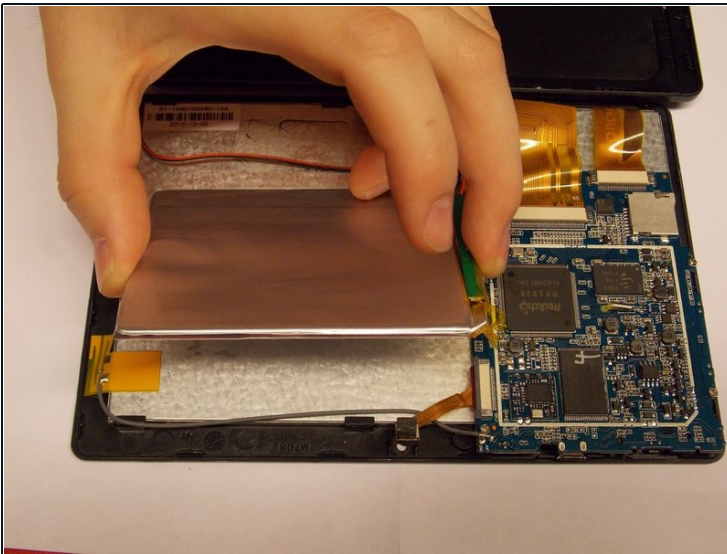
- Remove the black tape.
- ⚠ Be careful not to remove the tablet camera.

Step 3



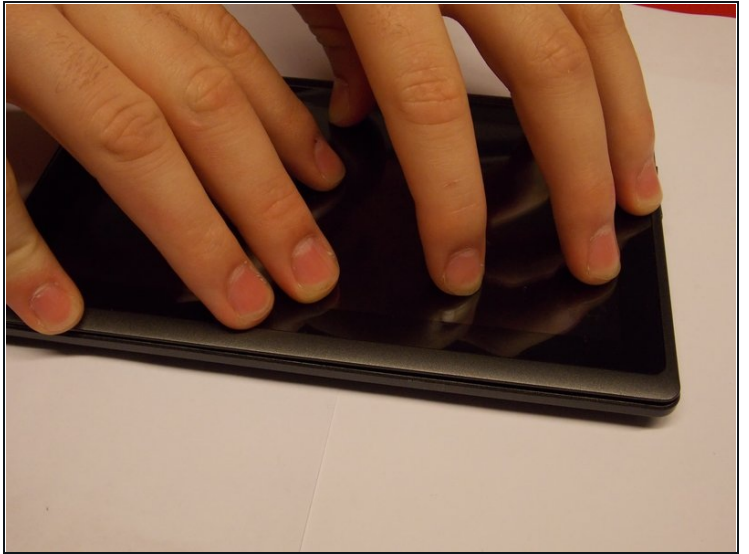
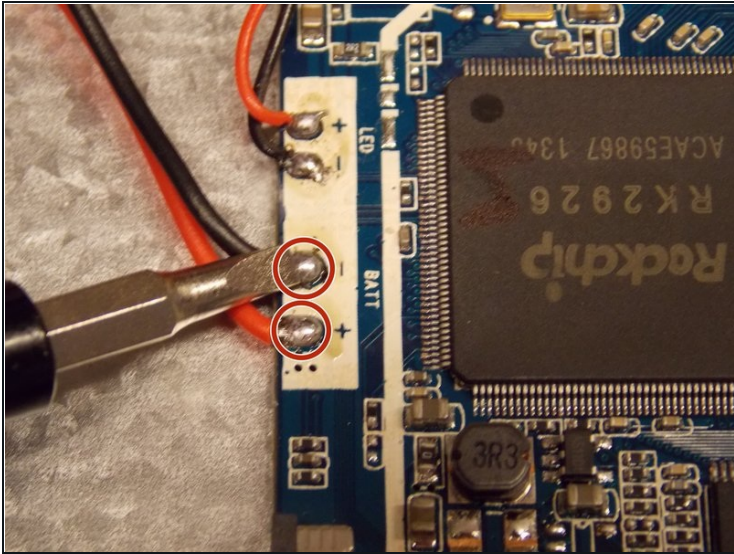
- Use a soldering iron to remove the battery from both its attachment points.
- Pry off the battery using an opening tool.

Step 4 — Replacing the Battery



- Insert your replacement battery in the same spot as the old battery.
- Tape battery into place.

Step 5 — Closing the Tablet



- Solder the new battery to the connection points.
- Press the back cover on firmly until it clicks.

To reassemble your device, follow these instructions in reverse order.