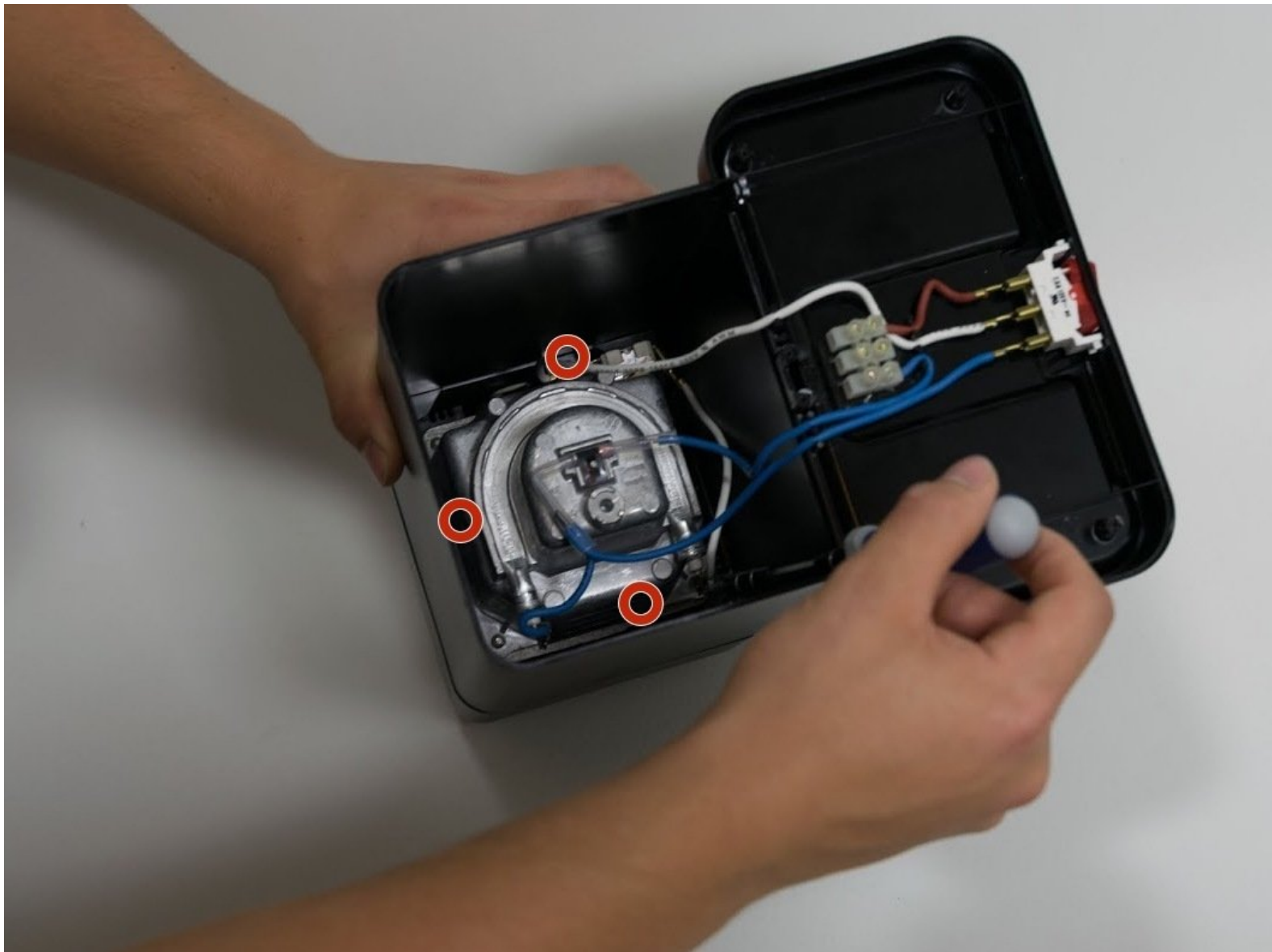




Disassembling Krups 963 Top Cover

Remove the top plastic cover of the machine, to fix leaks from the lid.

Written By: Wyatt Hall



INTRODUCTION

The espresso machine lid may leak, or you may need to service the electrical components. Follow the steps to remove the top plastic cover of the espresso unit in order to solve these problems:

- 1.) silicone washer attached to the inside top of the lid can fall into the unit (retrieve & press back into lid), resulting in the lid leaking;
- 2.) part of the silicone O-ring at the base of the threads is pushed under the machine top plastic cover, no longer protecting the inside of the unit from excess water entering the machine through the hole in the top section of the plastic cover.



TOOLS:

- [Phillips #2 Screwdriver](#) (1)
 - [Phillips #0 Screwdriver](#) (1)
 - [adjustable crescent wrench](#) (1)
-

Step 1 — Removing Bottom Screws



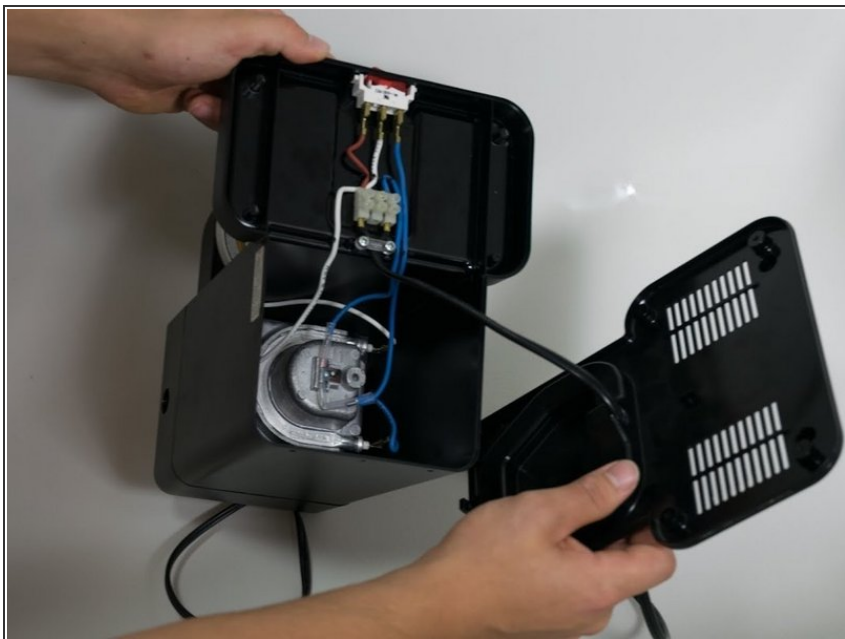
- ⚠ Make sure the device is unplugged before continuing.
- Use a Phillips size 2 screwdriver to remove the four 12mm screws found on the bottom of the machine.

Step 2



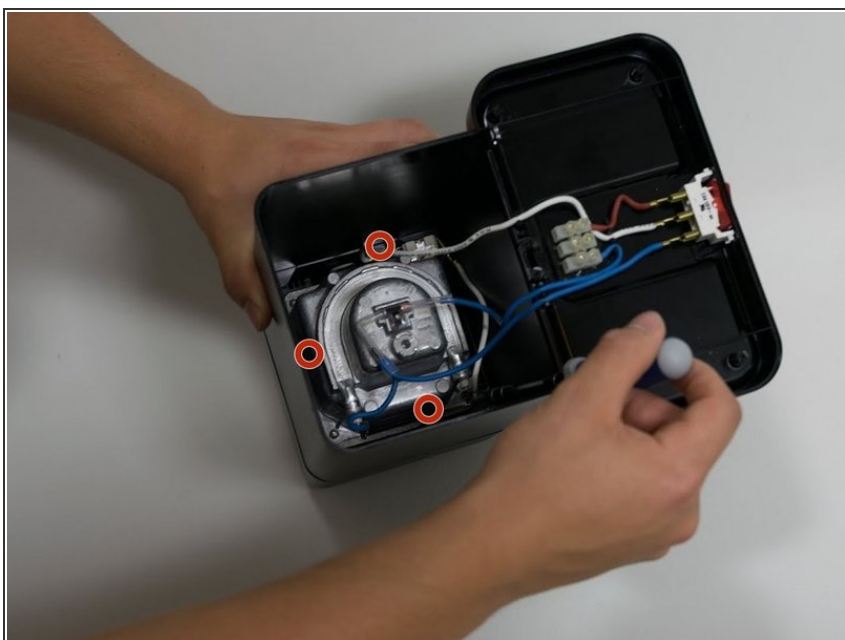
- Remove the single black Phillips size 0 10mm length screw on the back of the machine.

Step 3



- Remove the bottom cover from the machine and slide it down the power cord.

Step 4 — Disassembling Krups 963 Top Cover



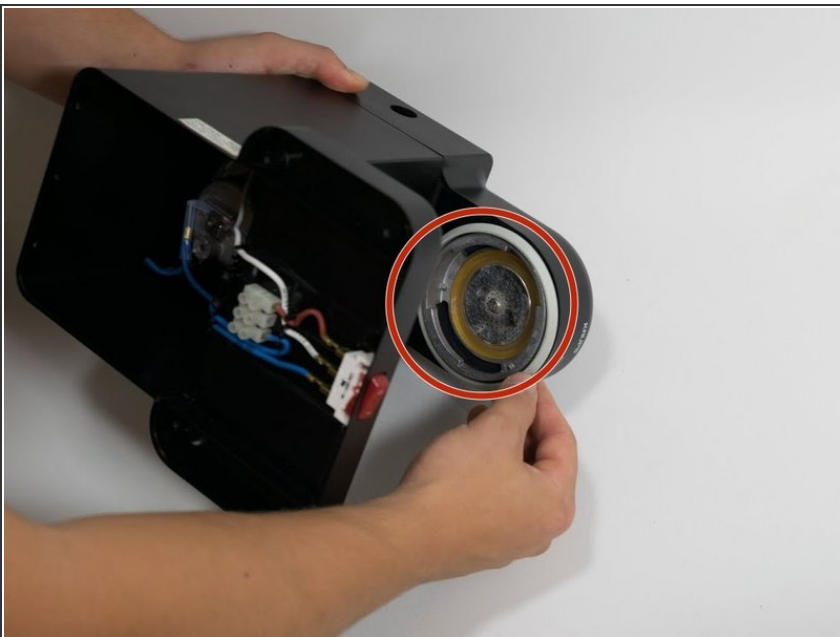
- Remove the three 60mm Phillips size 0 screws holding the top cover on.

Step 5



- Remove the top cap of the machine by turning it in a counter-clockwise motion (left hand in the picture), Check inside the water chamber, and if the silicone washer is inside, having fallen from the underside of the lid, retrieve it and reattach to the lid.
- Remove the entire pressure valve stem that is attached to the side of the espresso machine: using a crescent wrench, turn the six-sided stem tube counter-clockwise; you'll find it best to apply the wrench as close to the wall of the espresso machine (farthest away from the right hand shown in the photo).

Step 6



- Remove the grey plastic ring from the rim of the filter basket holder.

Step 7



- Lift and remove the top black plastic cover from the machine.

To reassemble your device, follow these instructions in reverse order.