



Canon PIXMA MP620B USB Reader Replacement

The Canon PIXMA MP620B is an all-in-one inkjet...

Written By: Val Fedorikhin



INTRODUCTION

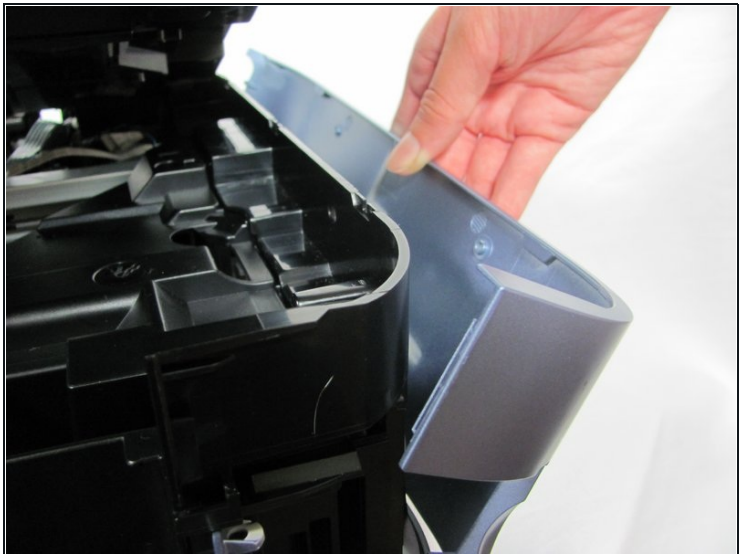
The Canon PIXMA MP620B is an all-in-one inkjet printer with an LCD screen, wireless network connectivity support, and high print resolution. Although it has wireless network connectivity, connecting via USB is sometimes the better option for a faster and more secure connection. If you're experiencing issues with the USB connection, such as a weak or non-existent connection, it could be time to replace the Canon printer's USB reader.

TOOLS:

Phillips #00 Screwdriver (1)

Spudger (1)

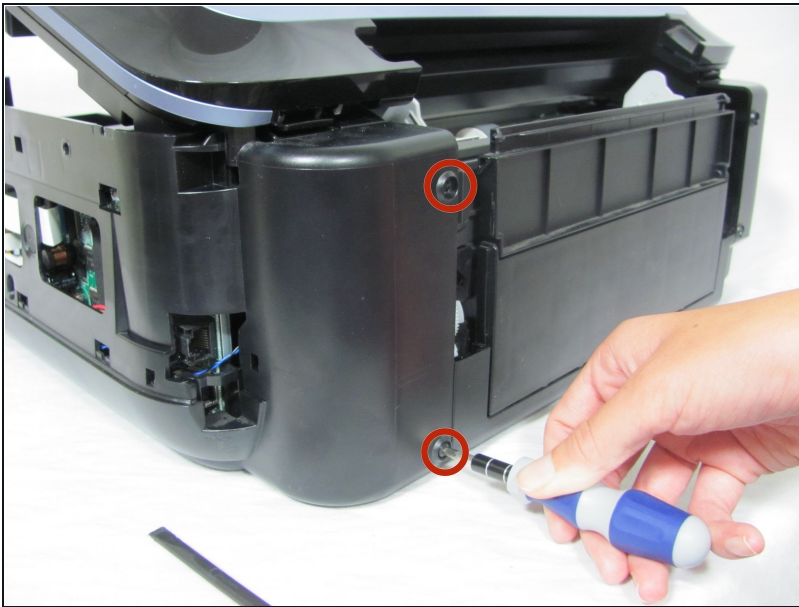
Step 1 — Pop off right blue side panel



- Locate the tabs on the top of the panel that hook down and into the black side panel.
- Insert the Spudger in-between the black panel and the blue panel as shown and pull the two pieces apart.

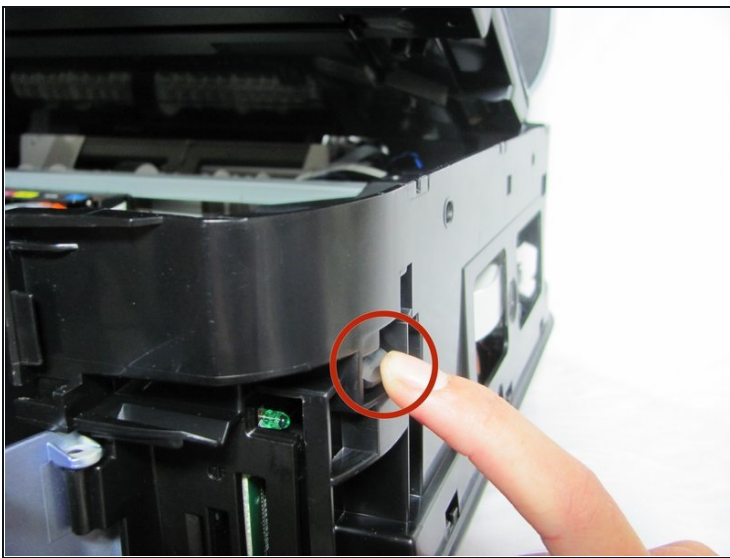
 You will hear some snapping. Don't panic: this is just the hooks un-clipping.

Step 2 — Loosen the back panel



- Remove the two screws from the back right black panel using the Phillips #00 screwdriver.

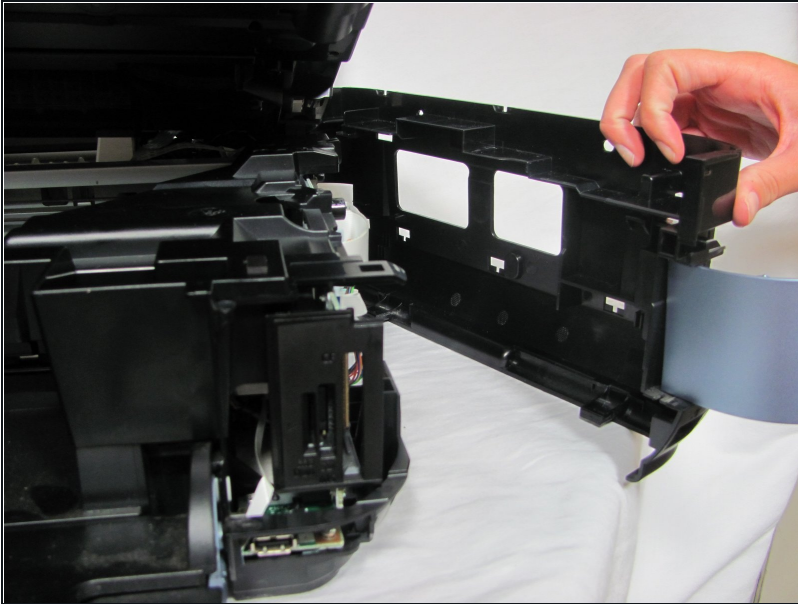
Step 3 — Pull off black side panel



- There is a tab you will have to push down to remove the part.
- Once the tab is released, gently lift the cover away from the rest of the device to disengage the clips.

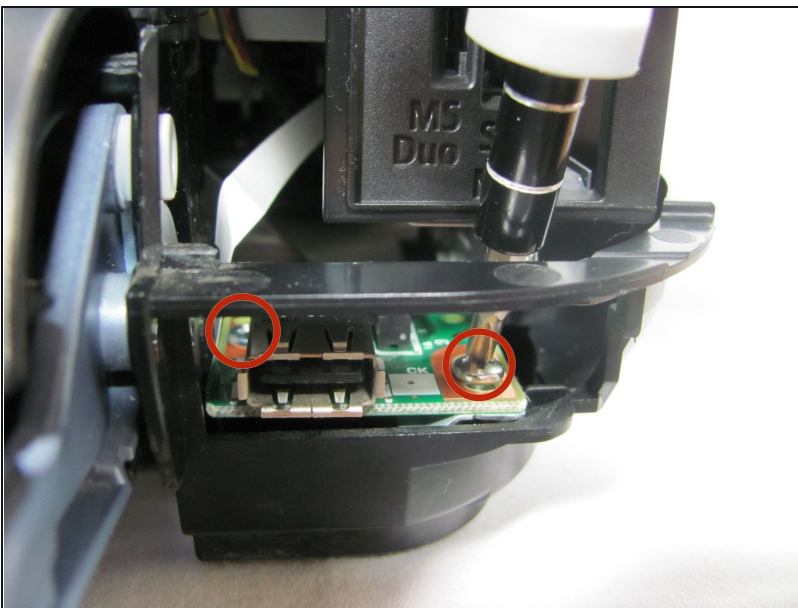
⚠ You will hear some snapping. Don't panic: this is just the clips un-clipping.

Step 4 — Take off the black side panel



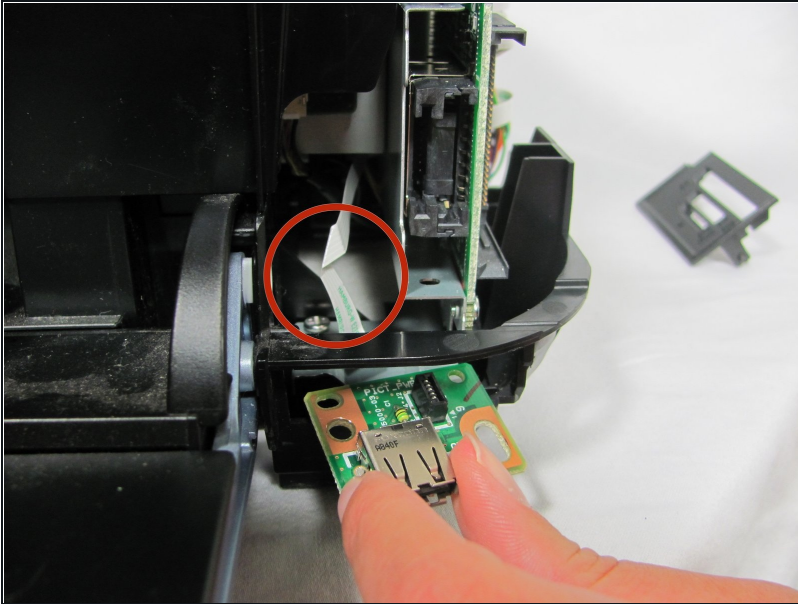
- After unclipping all the hooks, pull off the black side panel to reveal the inner circuit boards.

Step 5 — Unscrew 2 screws from USB chip



- Remove the two screws from the USB reader using the Phillips #00 screwdriver.
- ⓘ The angle for removing the screws can be somewhat challenging, try not to get too frustrated.

Step 6 — Pull out USB chip and disconnect white wire



- Disconnect the large white ribbon cable that leads to the USB reader. As you are pulling out the USB reader, carefully detach the ribbon.

To reassemble your device, follow these instructions in reverse order.