



2006-2008 Isuzu i-Series Wiper Motor Replacement

Replacing the wiper motor(s) could fix faulty windshield wipers.

Written By: Alex



INTRODUCTION

This guide will show how to replace the wiper motor. Some standard tools will be needed such as screwdrivers, sockets, wrenches, etc. This replacement is relatively simple and should not take more than one hour for completion.



TOOLS:

- [Spudger](#) (1)
 - [5/8" Wrench](#) (1)
 - [5/8" Socket](#) (1)
 - [Small Needle Nose Pliers](#) (1)
 - [10mm Wrench](#) (1)
 - [10mm Socket](#) (1)
 - [1/2" Wrench](#) (1)
 - [1/2" Socket Wrench](#) (1)
-

Step 1 — Removing Nut Caps



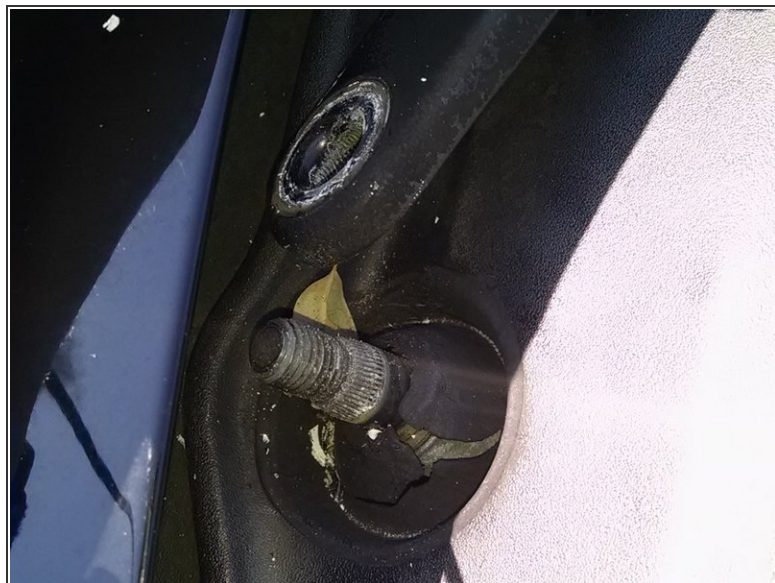
- Use a plastic prying tool or spudger to gently remove nut cap from wiper base.

Step 2 — Removing Nuts



- Use a 5/8 wrench or socket to remove the necessary nut holding the wiper in place.

Step 3 — Removing Wiper Arms



- Once the necessary nuts are removed, the wiper blade itself can be removed.
- This can be done easiest by first flexing the wiper to the upright position, then gently pulling the wiper off of the screw.

Step 4 — Removing Retainer Clips



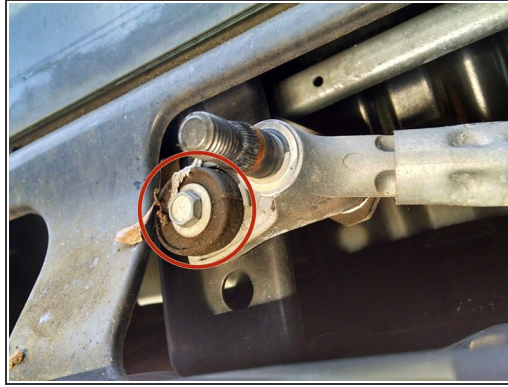
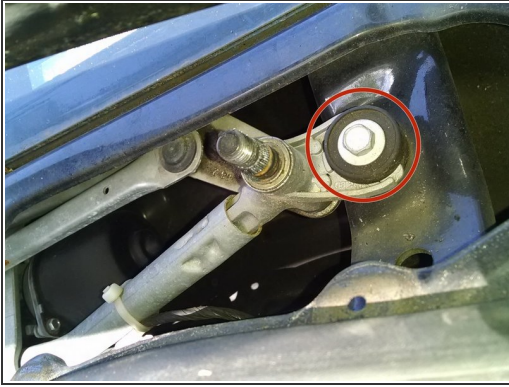
- Open the hood of the truck for easier access to the wiper cowl.
- Using pliers, locate the six retainer clips on the plastic cowl and remove them by pulling straight up.

Step 5 — Removing Wiper Cowl



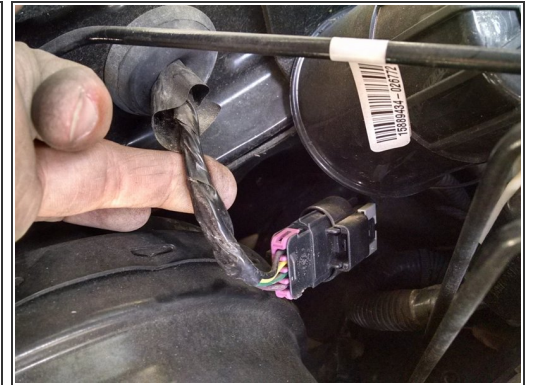
- Position your hands underneath the wiper cowl and start to gently loosen the plastic from the windshield.
 - Pull straight towards the front of the truck to slide the wiper cowl over the screws that held the wiper blades, exposing the wiper components underneath.
- i** The wiper cowl is flexible and can therefore be removed a little bit at a time. Take your time.

Step 6



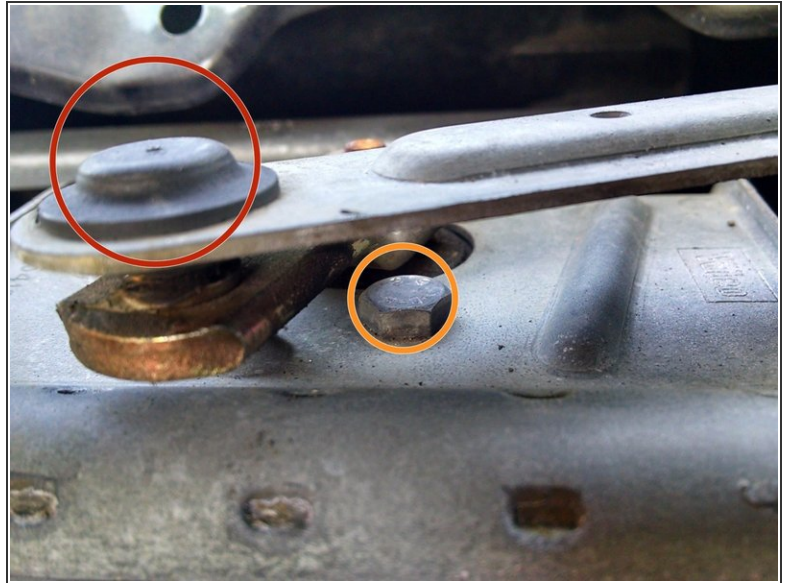
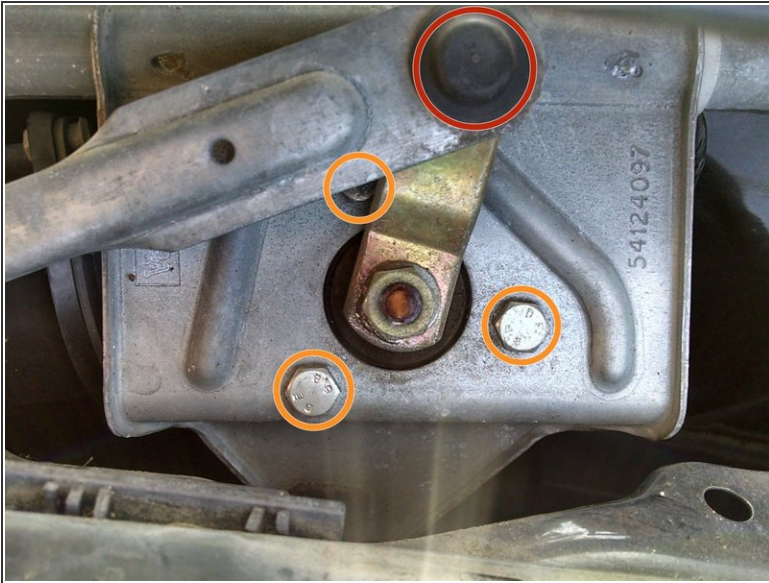
- Locate the two screws on each side of the wiper assembly.
- Use a 10mm socket or wrench and remove each screw.

Step 7 — Removing wiper assembly



- Rotate assembly towards the windshield while starting to remove it from the truck.
- Unplug the wiring harness located towards the driver's side of the truck.
- The wire can then be fed through to remove the assembly the rest of the way.

Step 8 — Accessing the Assembly



- Remove the connecting arm socket with a 1/2 inch wrench or socket (red circle).
- Remove the three motor bolts with a 10mm wrench or socket (orange circles).
- The wiper motor is now able to be replaced.

To reassemble your device, follow these instructions in reverse order.