



# Sony FDL-220R Watchman Button Replacement

Buttons on the Sony FDL-220R Watchman can become unresponsive due to substance build-up. This guide will show you how to deal with problematic buttons by either cleaning or replacing them.

Written By: Sam Putnam



---

## INTRODUCTION

This guide will show you how to clean and/or replace the buttons and switches on the Sony FDL-220R Watchman. Steps include basic disassembly of the Sony FDL-220R Watchman, and tools include a Phillips #00 Screwdriver and a solution of warm water and baking soda.



### TOOLS:

- [Phillips #00 Screwdriver](#) (1)
  - [Baking Soda](#) (1)
  - [Detailing Brush](#) (1)
-

## Step 1 — Remove battery cover and batteries



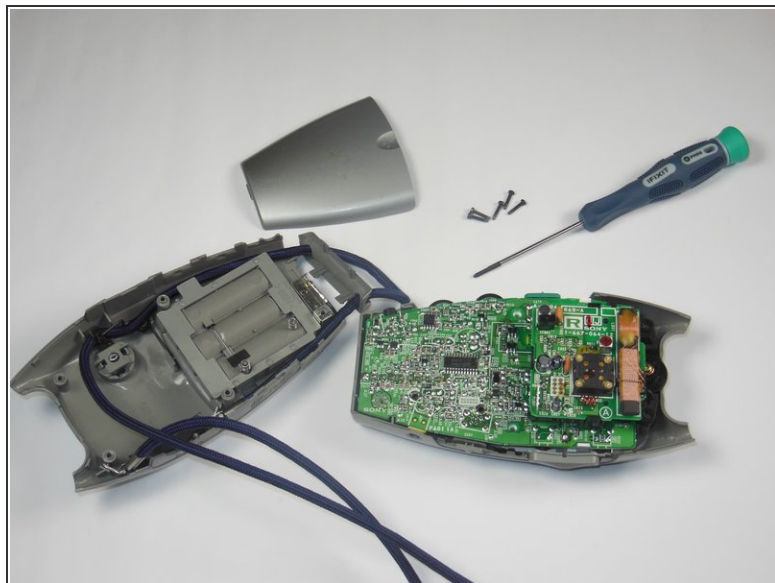
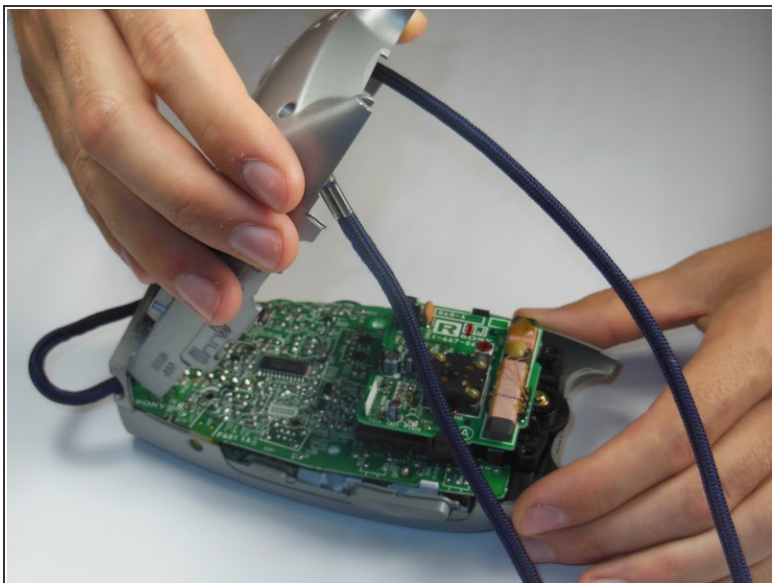
- Press down on the textured area and push towards the bottom of the device.
- Gently remove the battery cover.
- Remove the three AA batteries.

## Step 2 — Remove screws



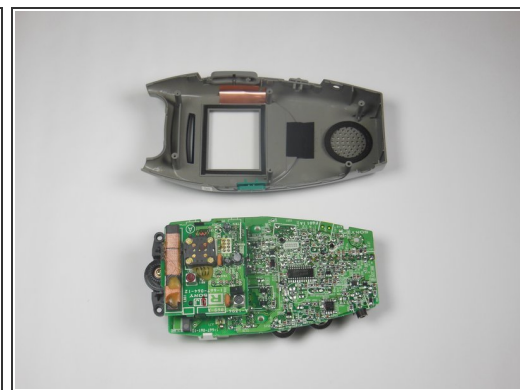
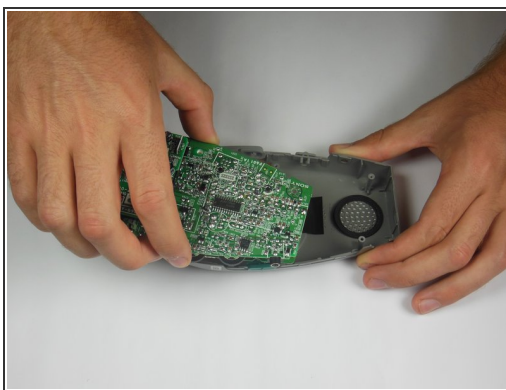
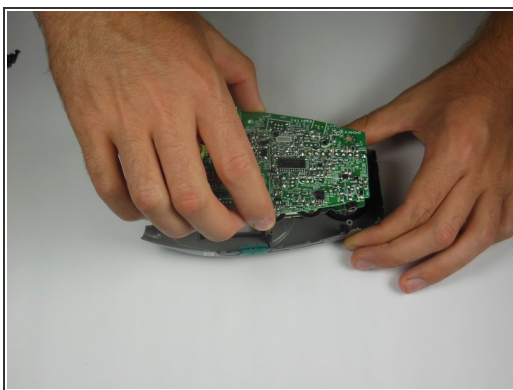
- Locate the five 5x11mm screws surrounding the battery compartment.
- Remove screws with a Philips #00 screwdriver.

### Step 3 — Remove back casing



- Grasp the entire back half of the Watchman's casing.
- Snap off the casing from the bottom of the device.
- Gently pull off entire back casing.

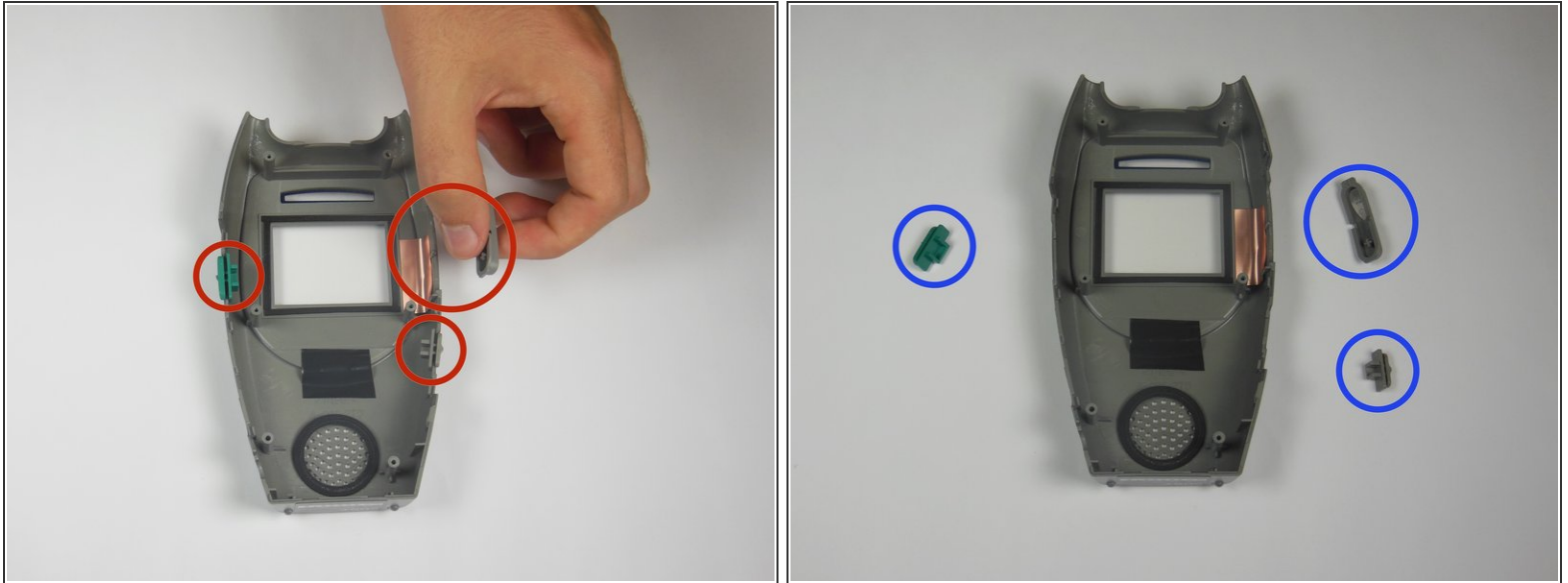
### Step 4 — Remove circuit board



- Carefully grasp the entire circuit board.
- Pull the circuit board off of the device's plastic casing.



## Step 5 — Remove/Replace Buttons



- Locate the three plastic buttons/switches on the sides of the plastic grey casing.
- ⓘ Buttons/switches should be simply resting in their slots on the device.
- Remove all three buttons/switches.
- If the buttons/switches are dirty, clean them in warm water and dry thoroughly.
- If one of the buttons/switches is broken, simply replace it with a new one.
- ☑ When replacing, make sure that the slot on the switches faces up.

To reassemble your device, follow these instructions in reverse order.