



iPhone 4 Dock Connector Replacement

Use this guide to replace the dock connector...

Written By: Walter Galan



INTRODUCTION

Use this guide to replace the dock connector assembly, which includes the dock connector and lower microphone.

[video: <http://www.youtube.com/watch?v=QRSvswPGlgc>]



TOOLS:

[P2 Pentalobe Screwdriver iPhone](#) (1)

If iPhone has external Pentalobe screws.

[Phillips #000 Screwdriver](#) (1)

[iFixit Opening Tool](#) (1)

[Spudger](#) (1)

[Tweezers](#) (1)



PARTS:

[iPhone 4 \(CDMA/Verizon\) Dock Connector](#) (1)

[iPhone 4 GSM Dock Connector](#) (1)

Step 1 — Rear Panel



⚠ Before you begin, discharge your iPhone battery below 25%. A charged lithium-ion battery can catch fire and/or explode if accidentally punctured.

- Power off your iPhone before beginning disassembly.
- Your iPhone 4 rear cover may have either two #000 Phillips screws or Apple's 5-Point "Pentalobe" screws ([second image](#)). Check which screws you have, and ensure you also have the correct screwdriver in order to remove them.
- Remove the two 3.6 mm Pentalobe or Phillips #000 screws next to the dock connector.
 - ⓘ Be sure the driver is well seated when removing Pentalobe screws, they are very easy to strip.

Step 2



- Push the rear panel toward the top edge of the iPhone.

ⓘ The panel will move about 2 mm.

Step 3



- Pinch the rear panel with your fingers and lift it away from the iPhone. Alternatively, use a Small Suction Cup .

⚠ Be careful not to damage the plastic clips attached to the rear panel.

- ✦ If you are installing a new rear panel, be sure to remove the plastic protective sticker from the inside of the camera lens and the sticker from the large black area near the lens.

Step 4 — Battery



- Remove the single 2.5 mm Phillips screw securing the battery connector to the logic board.
- ① Some devices may have two screws, one of which holds down the contact pad which is located above the screw indicated in red in the photo.

Step 5



- Use a plastic opening tool to gently pry the battery connector up from its socket on the logic board.
- ① Pry from the top and bottom of the connector bracket—there isn't as much of an overhang on the sides, and you may damage the connector.

⚠ Be very careful to only pry up on the battery connector and not the socket on the logic board. If you pry up on the logic board socket, you may break it entirely.

- Remove the metal clip covering the antenna connector.

Step 6



- Use the clear plastic pull tab to gently lift the battery out of the iPhone.
- ⓘ If the tab breaks before the battery is freed, apply a few drops of high concentration (over 90%) isopropyl alcohol under the edge of the battery. Wait about one minute for the alcohol solution to weaken the adhesive. Carefully slide a spudger under the battery tab to release the adhesive.
 - ⚠ Prying in other places may cause damage. Don't try to forcefully lever the battery out. If needed, apply a few more drops of alcohol to further weaken the adhesive. Never deform or puncture the battery with your pry tool.
- If there's any alcohol solution remaining in the phone, carefully wipe it off or allow it to air dry before installing your new battery.
- ⓘ If your replacement battery came in a plastic sleeve, remove it before installation by pulling it away from the the ribbon cable.
- Before reconnecting the battery connector, be sure the contact clip (shown in red) is properly positioned next to the battery connector.
- ★ Before reassembly, clean metal-to-metal contact points with a de-greaser such as windex. The oils from your fingers have the potential to cause wireless interference issues.
- ★ Perform a [hard reset](#) after reassembly. This can prevent several issues and simplify troubleshooting.

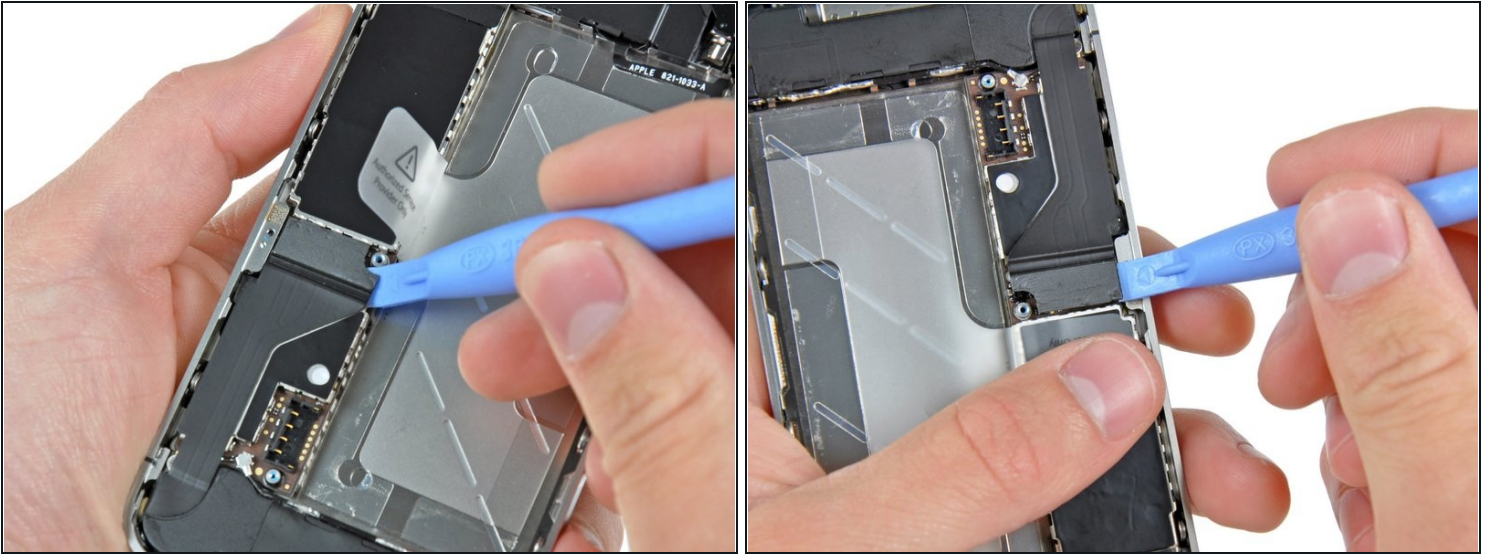
Step 7 — Speaker Enclosure Assembly



- Remove the following two screws:
 - One 1.2 mm Phillips
 - One 1.6 mm Phillips
- Remove the thin steel dock connector cable cover from the iPhone.

⚠ Before reassembly, be sure to clean all metal-to-metal contact points on the dock connector cable cover with a de-greaser such as windex. The oils on your fingers have the potential to cause wireless interference issues.

Step 8



- Use a plastic opening tool to gently pry the dock cable connector up off the logic board from both short ends of the connector.

Step 9



- Carefully peel the dock ribbon cable off the logic board and the lower speaker enclosure.

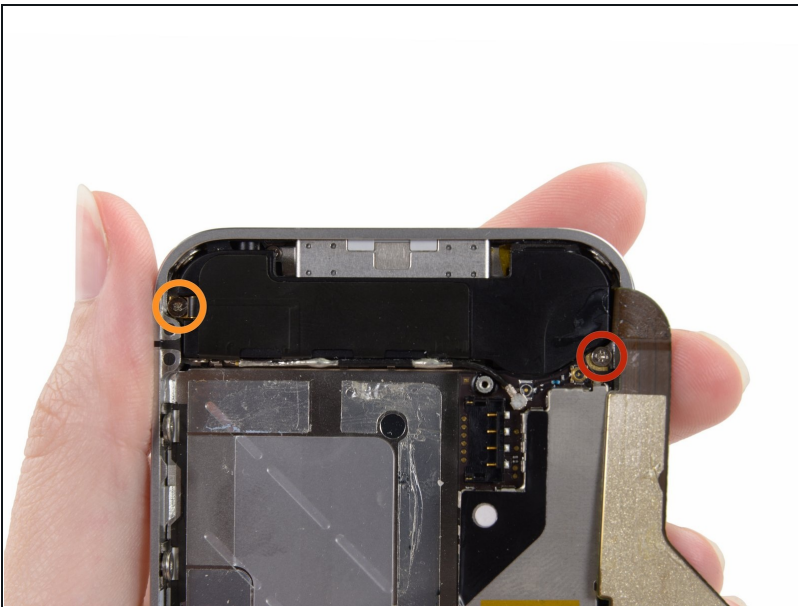
⚠ Do not use excessive force to peel the dock ribbon cable off the logic board. Doing so may tear the cable.

Step 10



- Use a plastic opening tool to pry the lower antenna connector up off its socket on the logic board.

Step 11



- Remove the following screws securing the speaker enclosure assembly to the outer case:
 - One 1.9 mm Phillips screw
 - One 2.4 mm Phillips screw

Step 12



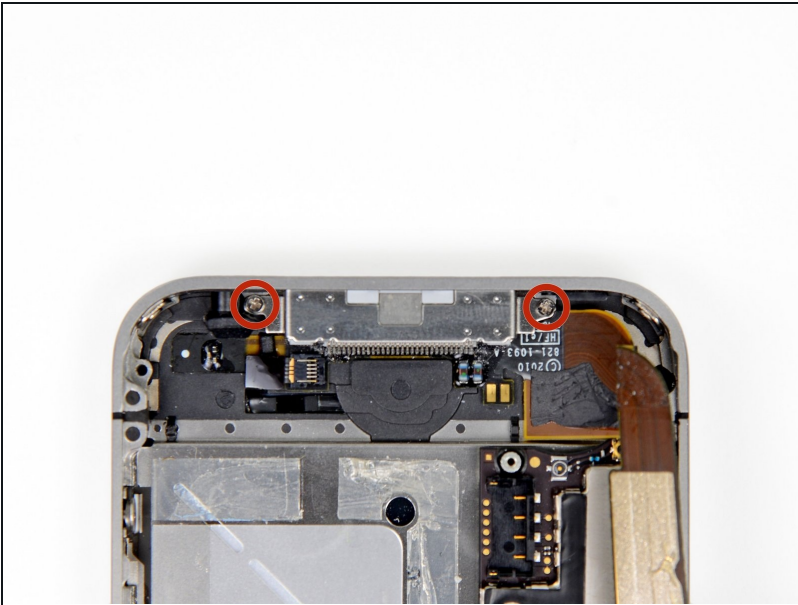
- Use a plastic opening tool to lift the speaker enclosure assembly out of the case, being sure not to damage the EMI fingers on the attached Wi-Fi antenna.
 - Remove the speaker enclosure assembly.
- ☒ Before reinstalling the speaker enclosure assembly's screws, be sure the Wi-Fi grounding fingers are installed below the lip in the iPhone's metal case as seen in the third picture.
- ⚠ Before reassembly, be sure to clean all metal-to-metal contact points between the grounding fingers of the Wi-Fi antenna and the case of the iPhone with a de-greaser such as windex or isopropyl alcohol. The oils on your fingers have the potential to cause wireless interference issues.**

Step 13 — Dock Connector



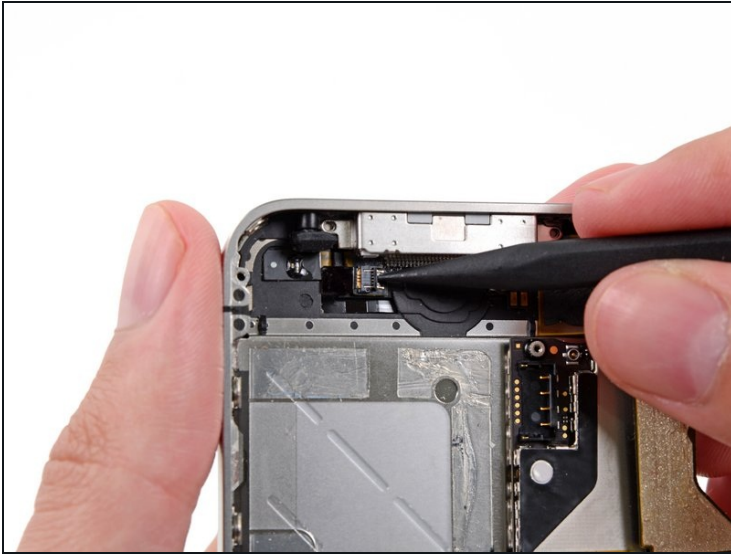
- Use the edge of a plastic opening tool to carefully peel the bottom edge of the dock connector assembly off the adhesive securing it to the rear case.

Step 14



- Remove the two 1.3 mm Phillips screws securing the dock connector to the rear case.

Step 15



- Use the tip of a spudger or your fingernail to flip up the home button ribbon cable retaining flap.
- ⚠ Be sure you are prying up on the retaining flap, **not** the socket itself. The retaining flap is the small flap on the charging port side of the cable retainer. It should flip up 90°.
- Use a pair of [tweezers](#) to gently pull the home button ribbon cable out of its socket. Note its position for reinsertion.
- ⚠ Do not excessively strain the home button ribbon cable as you remove it, as it is very thin and fragile.

Step 16



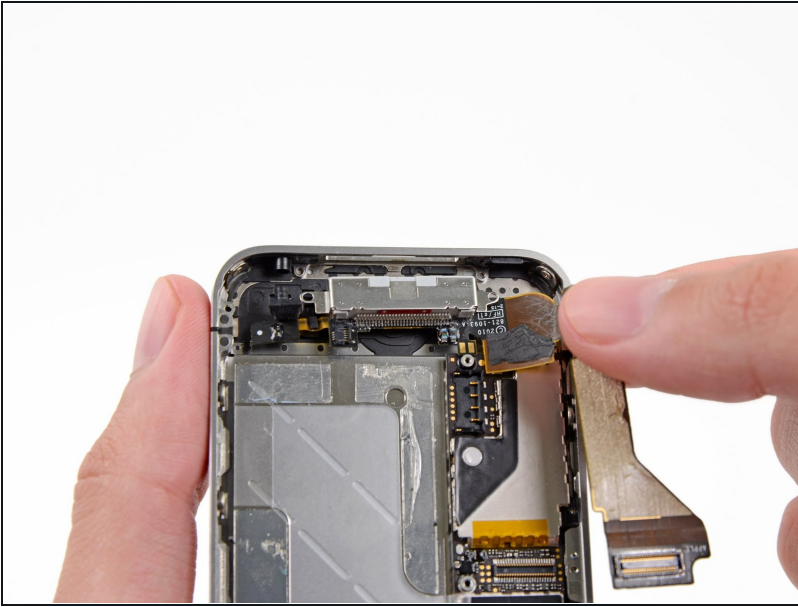
- Use the flat edge of a spudger to carefully peel the left edge of the dock connector assembly and its ribbon cable off the adhesive securing it to the rear case.
- Pry the right edge of the dock connector off the rear case.

Step 17



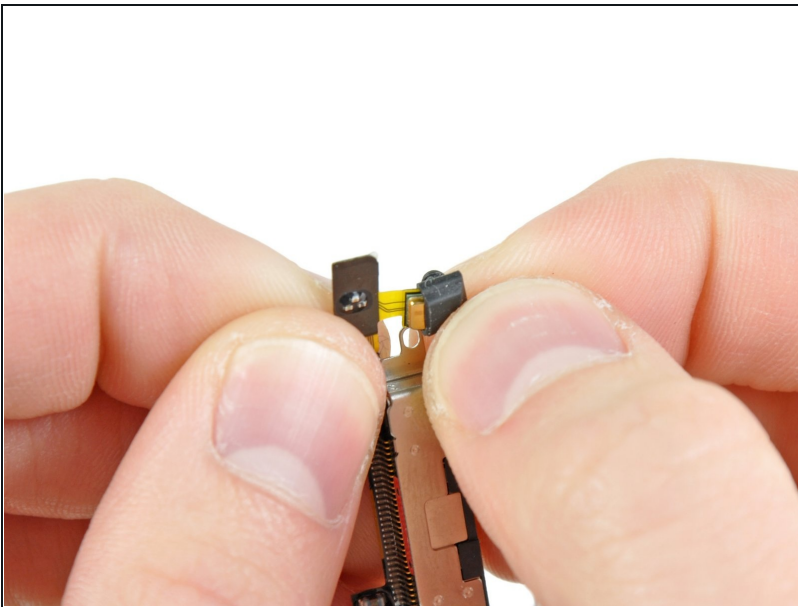
- Use the flat edge of a spudger to push the lower microphone away from the bottom edge of the iPhone.
- ① Note the folding of the cable and the positioning of the rubber microphone cover for reassembly.

Step 18



- Remove the dock connector assembly from the iPhone, minding any cables that may get caught.

Step 19



- Slide the rubber cover off the microphone attached to the old dock connector and transfer it to your new dock connector.
- The ribbon is very fragile and can easily be torn when placing the rubber cover onto your new part.
- ① If your microphone does not work after replacing your dock connector, the issue may be that the rubber cover is not positioned properly on the mic cable.

To reassemble your device, follow these instructions in reverse order.