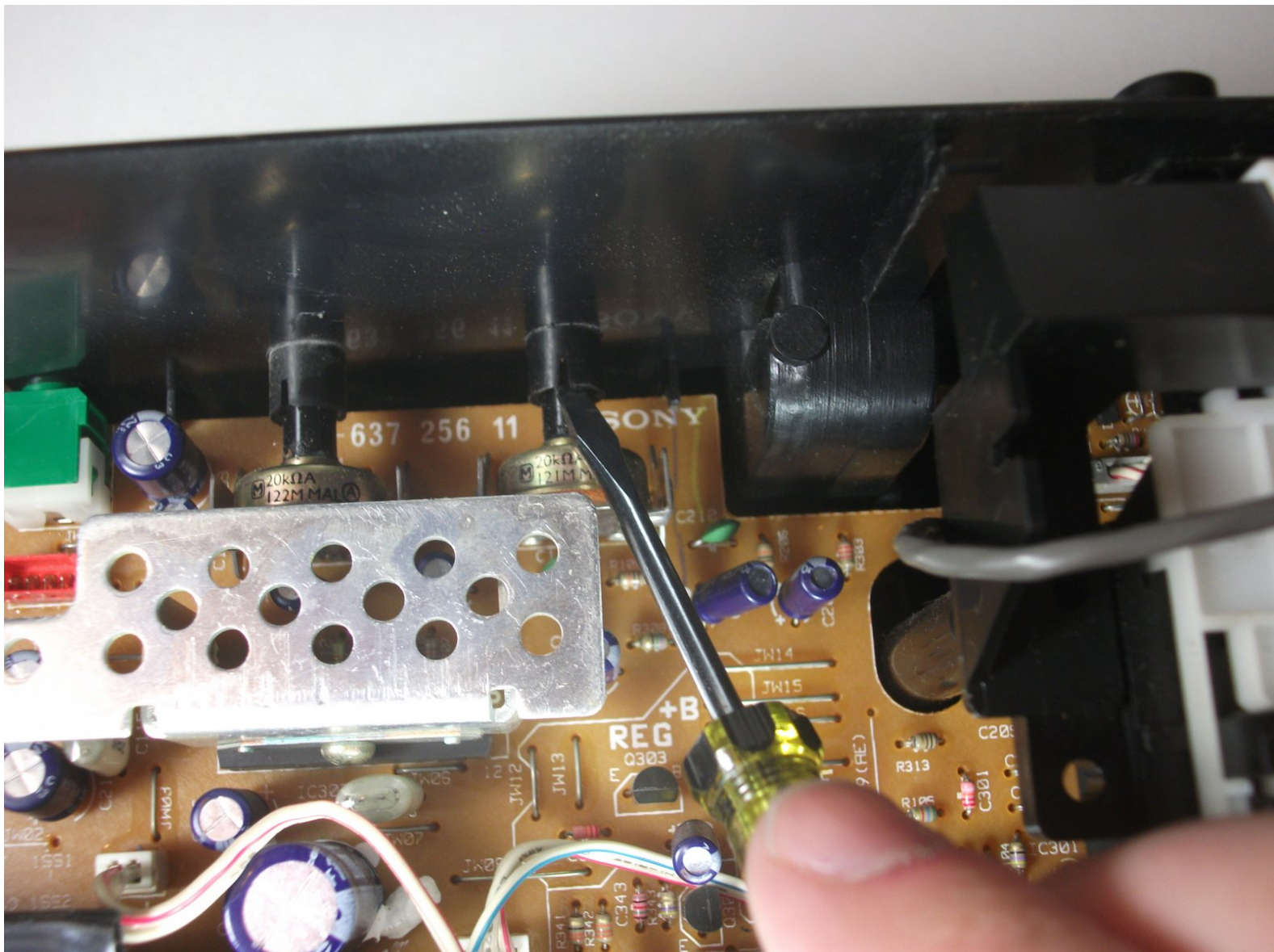




Sony CFS-204 Radio Cassette-Corder Volume Knob Replacement

If the volume knob is cracked or nonfunctional, this guide will allow you to learn how to replace it!

Written By: Brittany Patterson



INTRODUCTION

This guide will demonstrate how to access the TONE knob or VOLUME knob and replace it.

TOOLS:

- [6-in-1 Screwdriver](#) (1)
 - [Phillips #2 Screwdriver](#) (1)
-

Step 1 — Batteries



- Press down on the two tabs at the top of the door.
- Rotate the door away from the radio, towards you.
- Lift the door out of the three smaller tabs on the bottom.

⚠ Ensure the radio is turned off to avoid the possibility of electric shock.

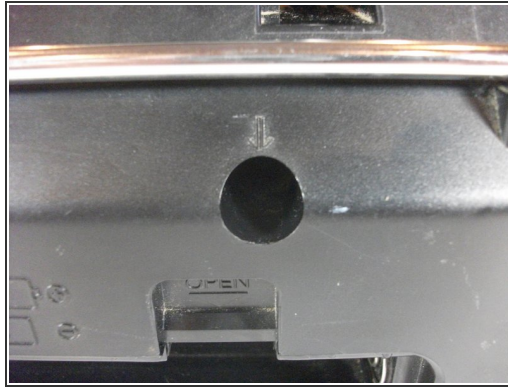
i The battery compartment door is not shown.

Step 2 — Batteries



- Push the batteries against the spring and pull out using your finger to remove them.
- ☑ To insert the new batteries, push the negative end of the 1st battery against a spring and follow the diagram pictured to insert the batteries in the correct orientation.

Step 3 — Screws



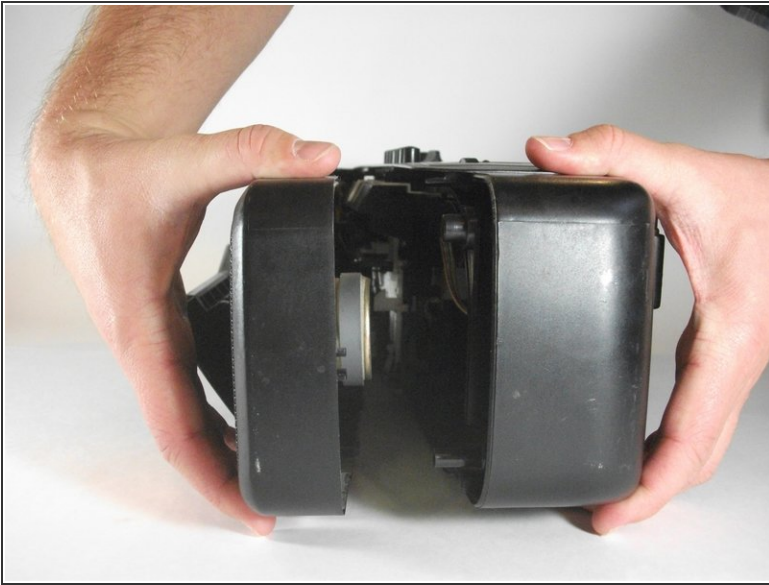
- Remove the 6 screws (30 mm in length) with the Phillips #2 Screwdriver from the large holes marked by arrows on the radio.

Step 4 — Opening



- Press the EJECT button to open the cassette deck.
- ⓘ Pressing this button is required to allow the front face to separate from the case.

Step 5



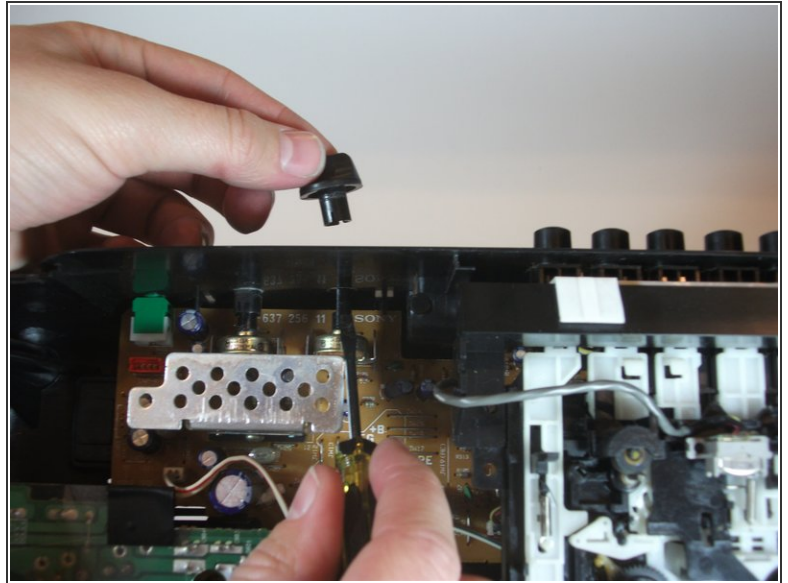
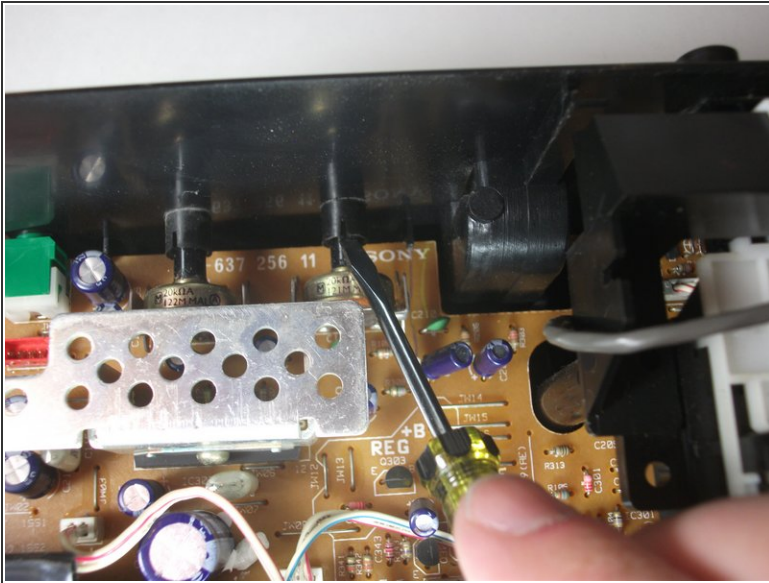
- Grasp the radio from the front and back halves and gently pull apart to separate them.

Step 6



- Pull the white plug out from the red outlet in the Orange circuit board in the back face of the casing.
- i* Take care not to break the red outlet off the circuit board.
- i* The front and back portions of the casing are now separated from each other.

Step 7 — Volume or Tone Knob



- Push upwards against bottom edge of the knob connection with a flat head screwdriver until the knob pops off.

i You may wish to hold on to the knob so you don't lose it!

To reassemble your device, follow these instructions in reverse order.