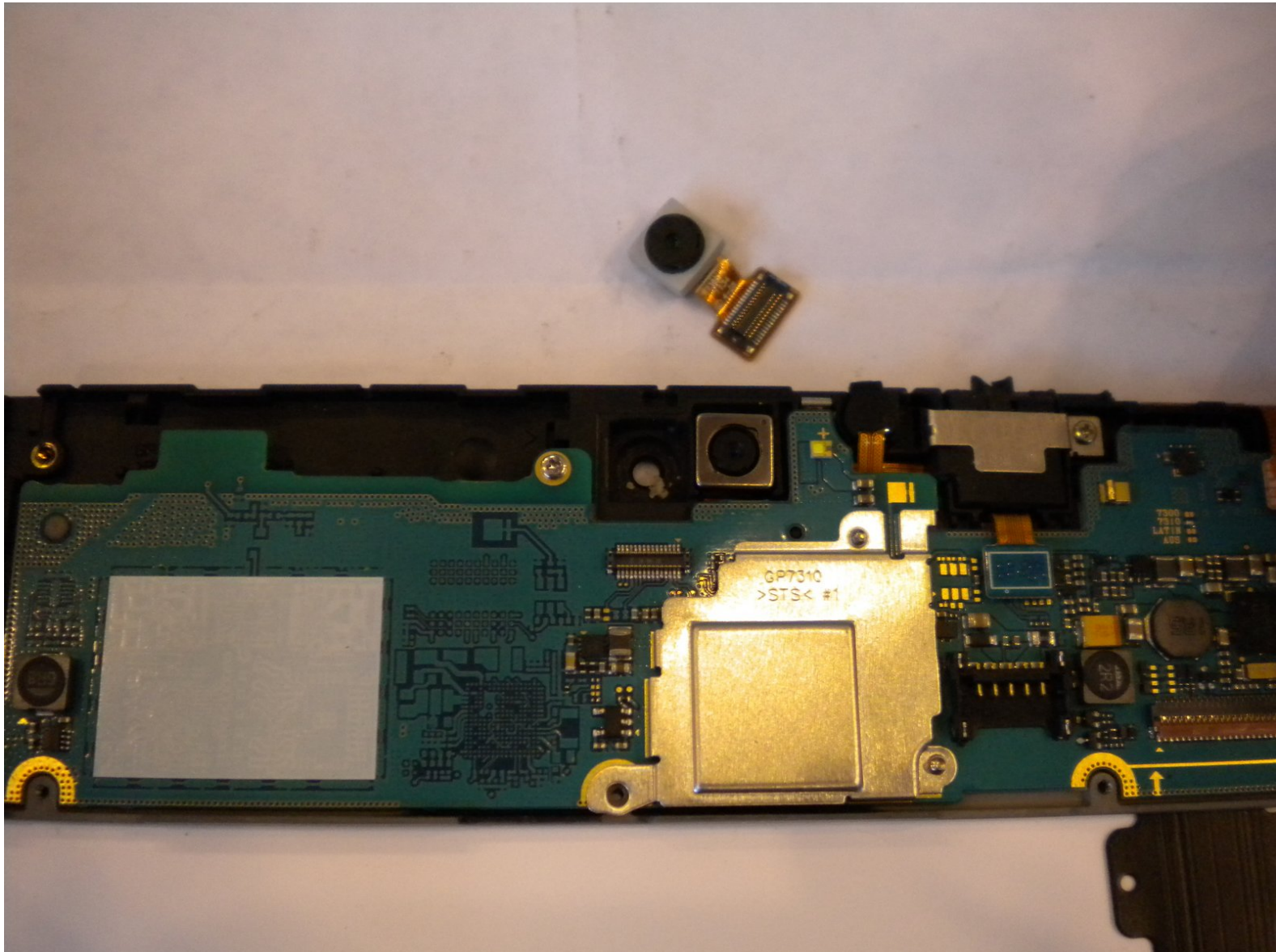




Samsung Galaxy Tab 8.9 Front Facing Camera Replacement

In this guide, we will show you how to locate and replace your front facing camera.

Written By: Aleezee True

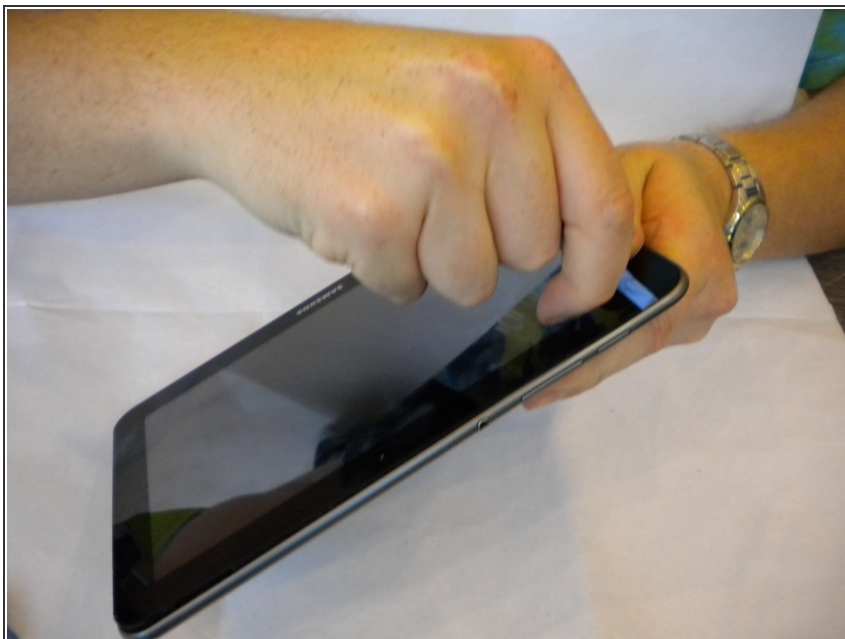




TOOLS:

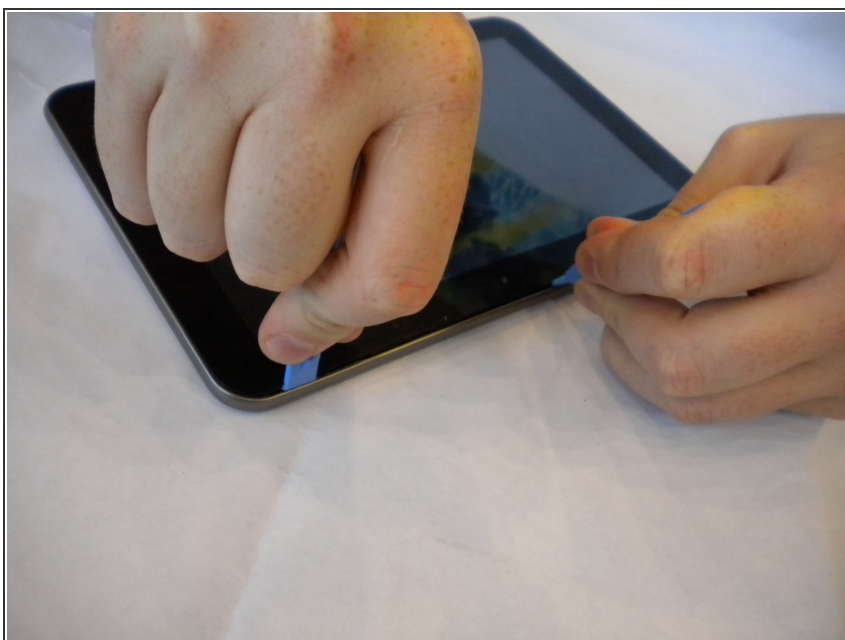
- [Spudger](#) (1)
-

Step 1 — Insert Opening tool



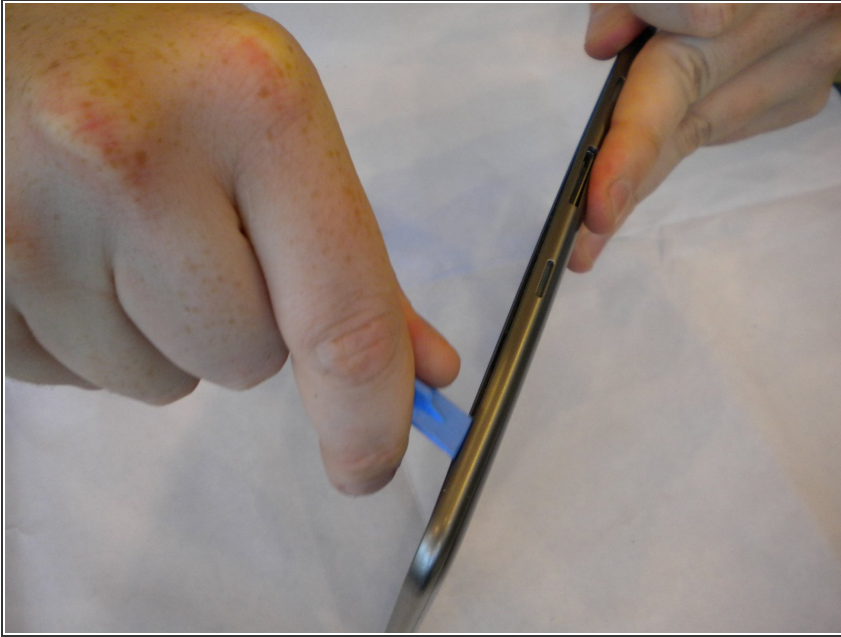
- Insert a plastic opening tool between the back cover and screen of the Samsung Galaxy Tab 8.9 (as indicated in the photograph).

Step 2 — Insert second tool



- Insert a second plastic opening tool 6 cm (~2.4 inches) away from the first tool.

Step 3



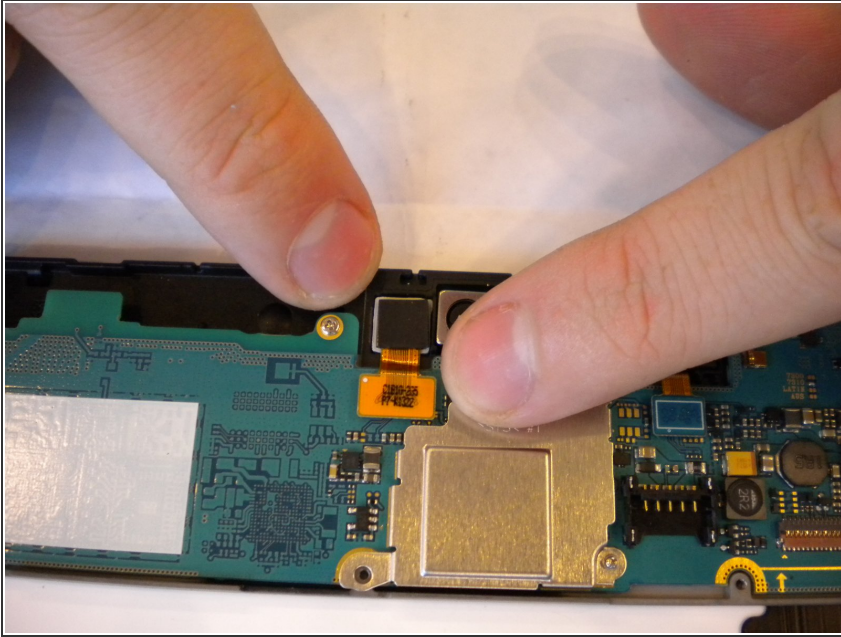
- Slide the second plastic opening tool along the edge of the device to separate the back cover.

Step 4



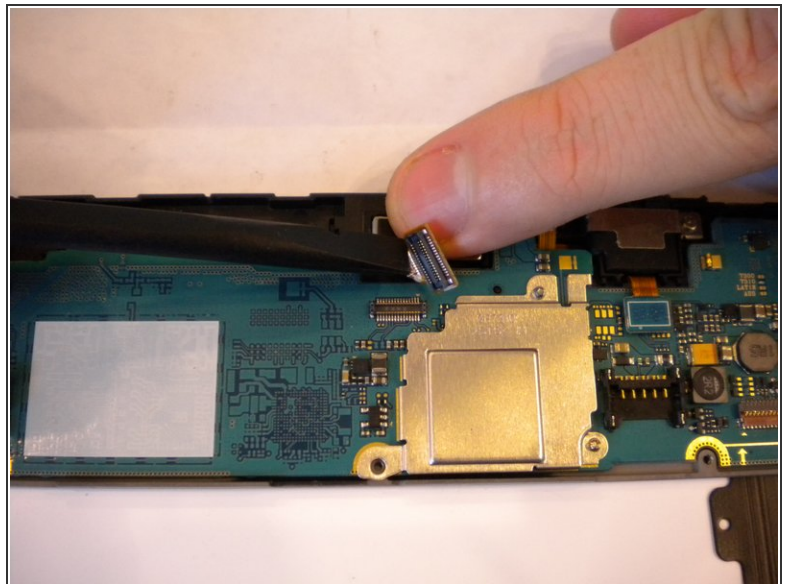
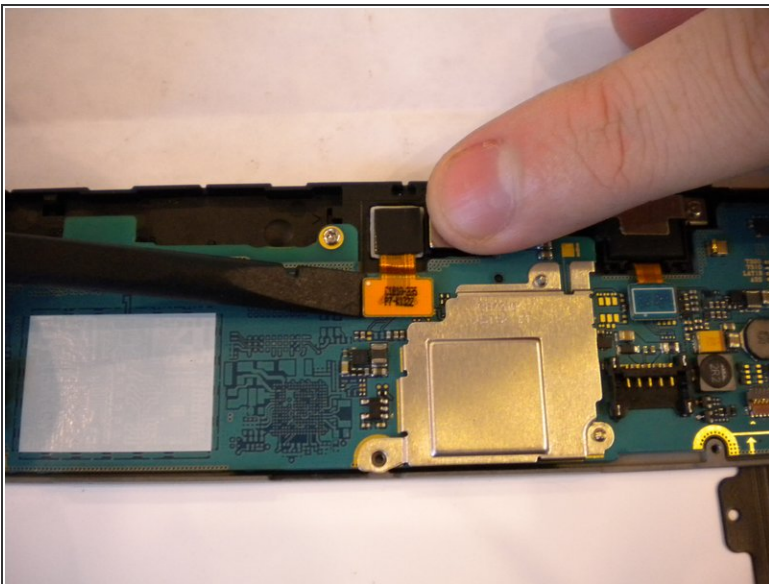
- Using your hands, remove the back cover.

Step 5 — Locate Camera



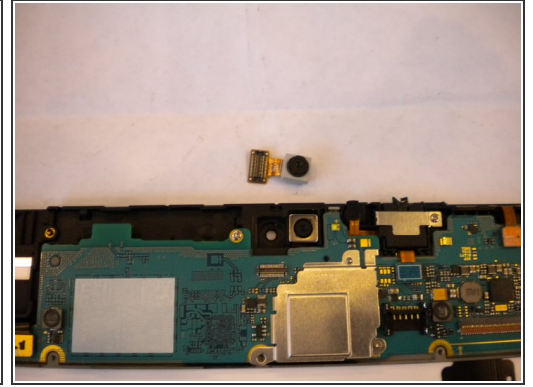
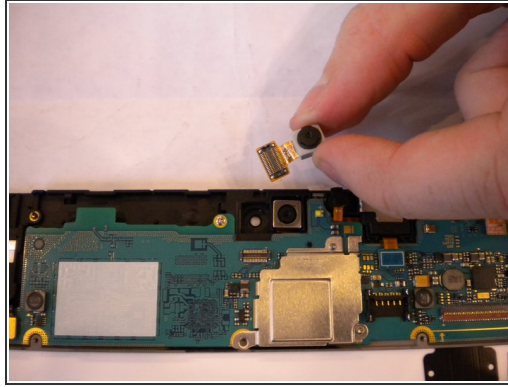
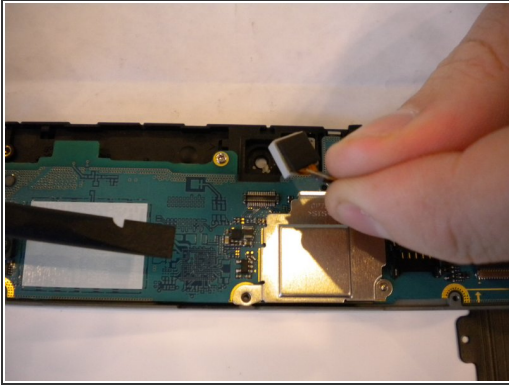
- Camera can be found near the top center of device.

Step 6



- Using Spudger, lift connector from mother board

Step 7 — Remove Camera



- Lift camera and remove from device.

To reassemble your device, follow these instructions in reverse order.