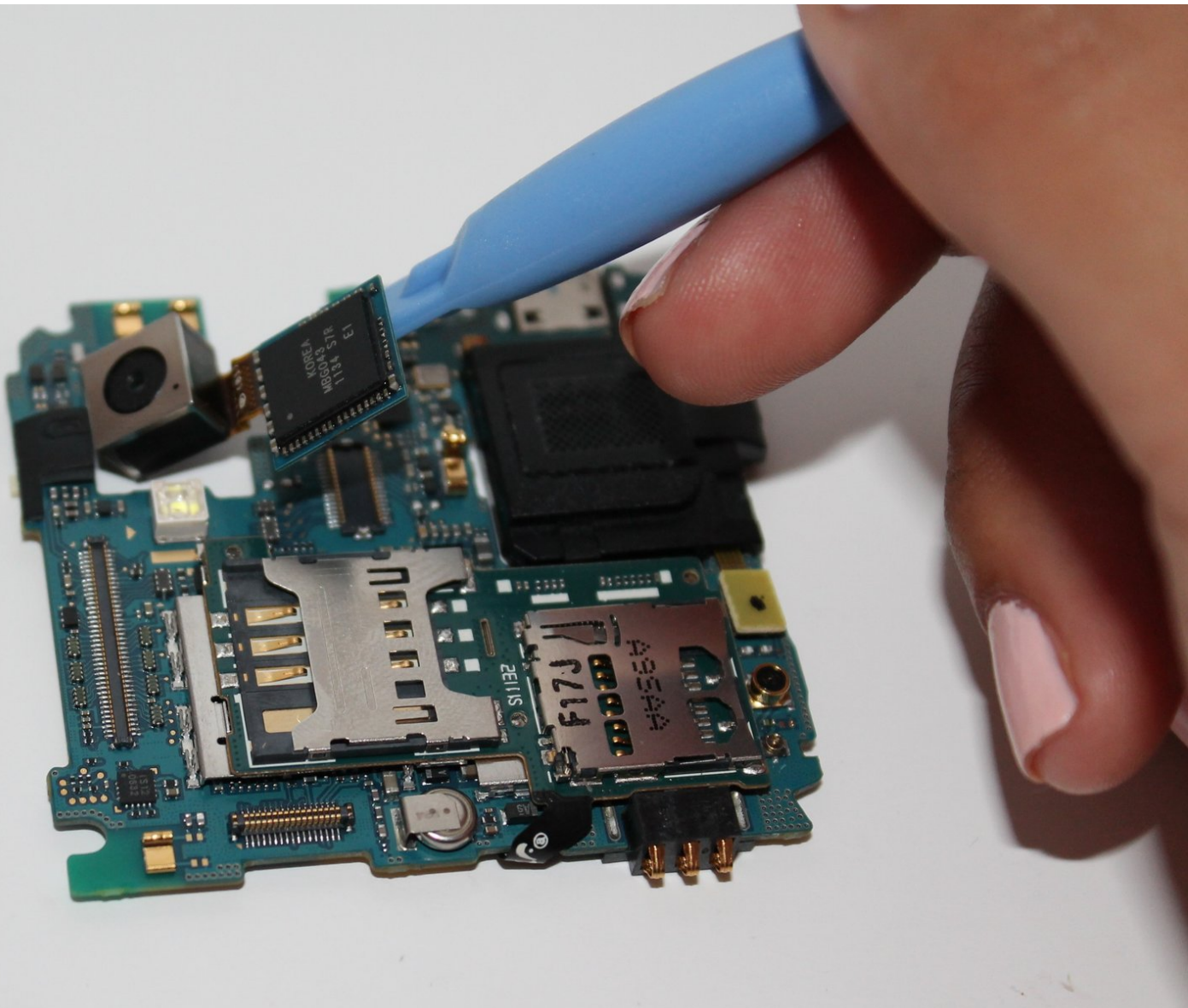




Samsung Captivate Glide Camera Replacement

Replacing the camera on the Samsung Captivate Glide.

Written By: Jessica Martinez



INTRODUCTION

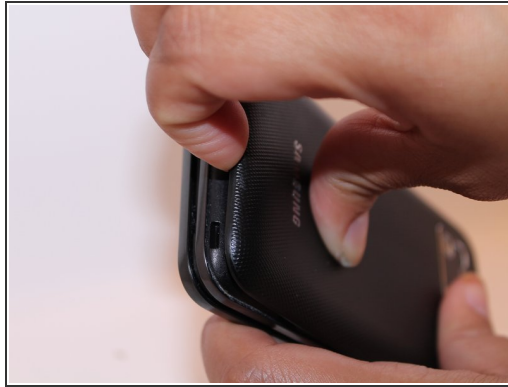
If you receive an error message when attempting to use your camera, and resetting to factory settings did not fix it, then you need to replace the camera or ensure that your camera is connected to the motherboard. At times, if you've dropped your phone, the camera may detach from the motherboard.



TOOLS:

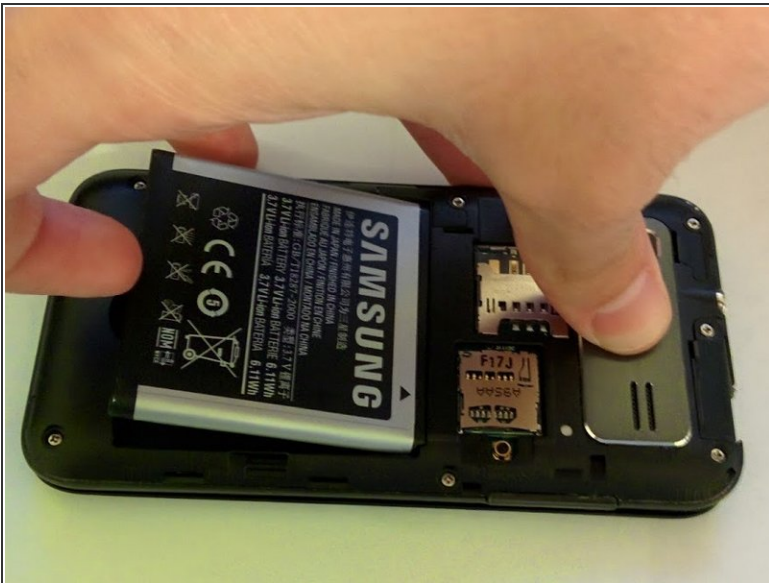
- [Phillips #00 Screwdriver](#) (1)
 - [iFixit Opening Tools](#) (1)
 - [Tweezers](#) (1)
-

Step 1 — Motherboard



- Remove back cover using fingernail or plastic opening tool. The cover pulls up and off.

Step 2



- Remove battery with plastic opening tool or finger.

Step 3



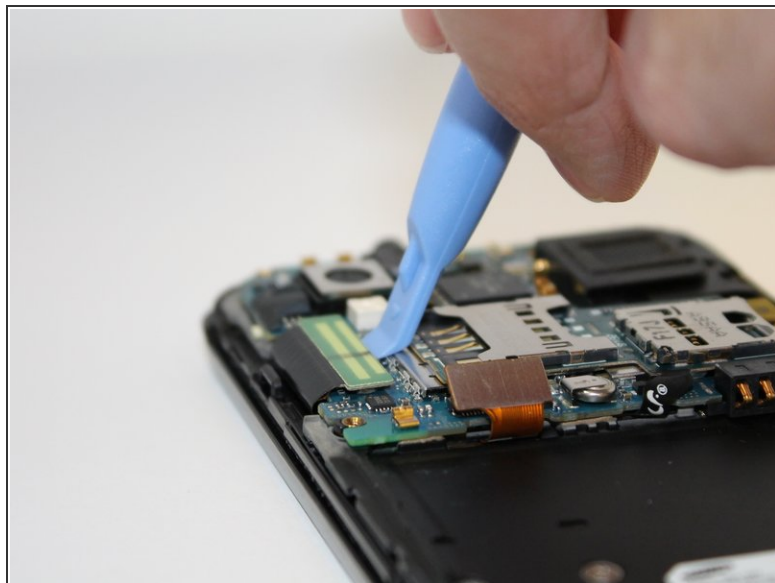
- Remove the seven screws from backplate using the #00 screwdriver.

Step 4



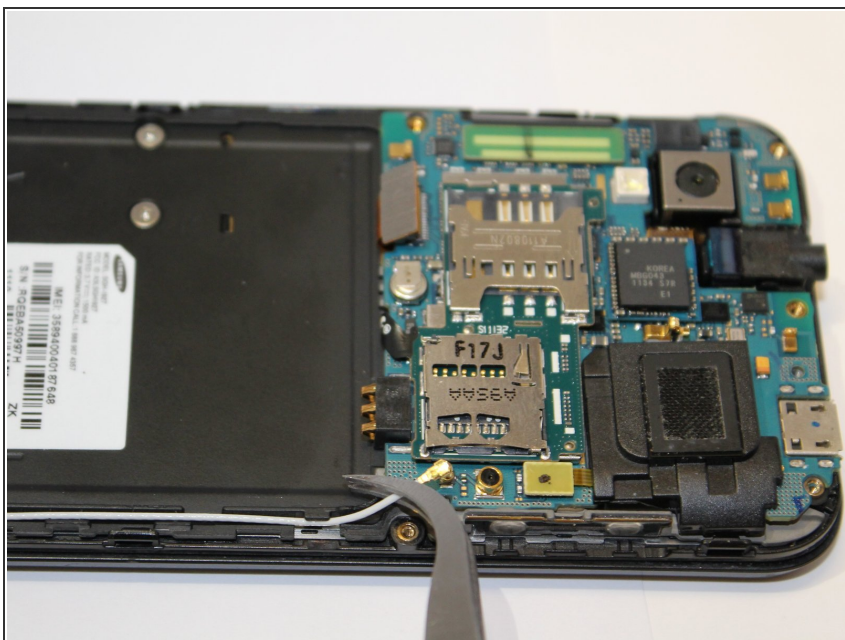
- Remove the back plate using the plastic opening tool.
- There is a lip on each side, and both must be pried up.
- ⓘ You can work your way around the edges after prying the two sides.

Step 5



- Use the plastic opening tool to detach the two tabs connecting the motherboard to the base of the phone.

Step 6



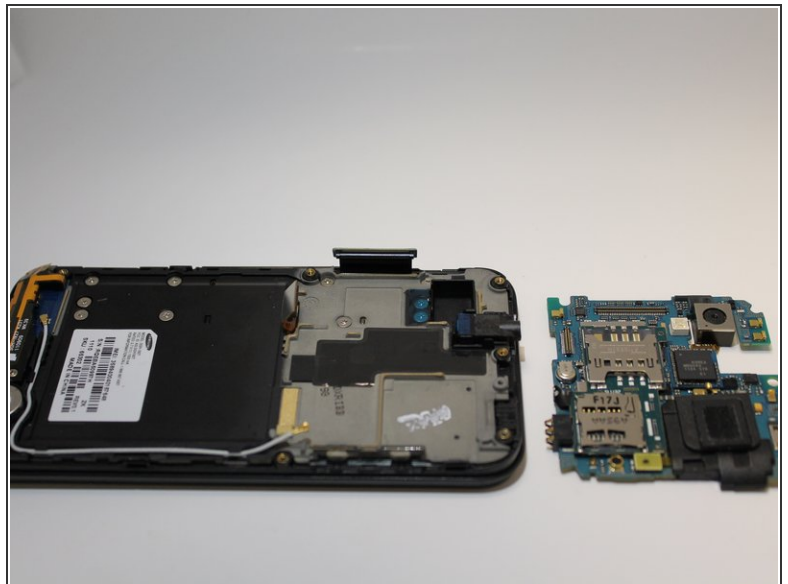
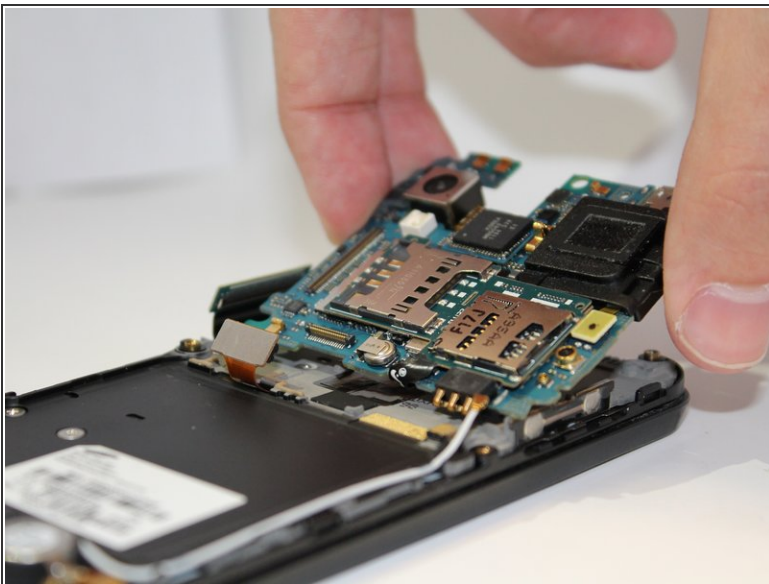
- Disconnect the antenna cable from the motherboard using tweezers.

Step 7



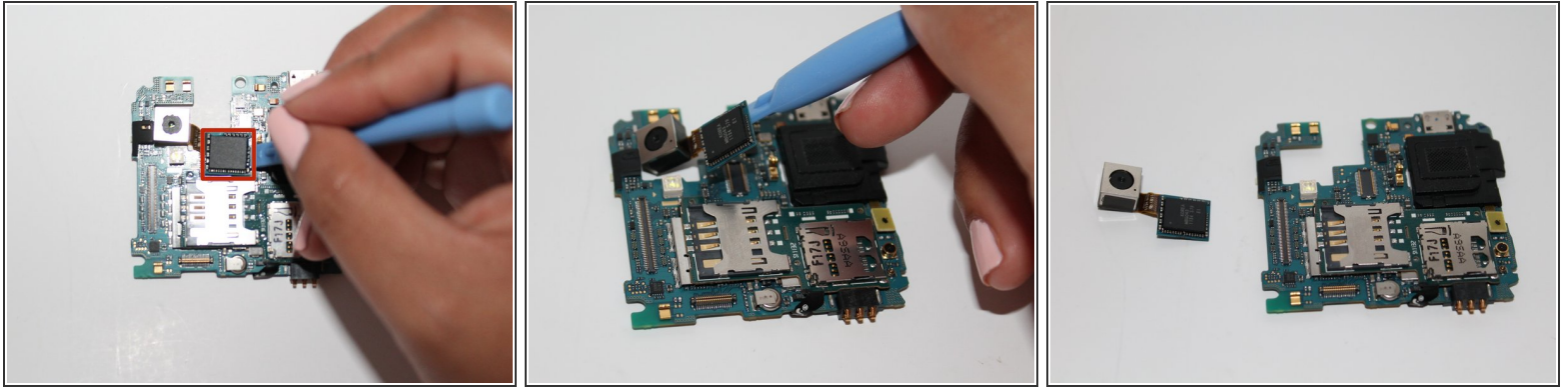
- Remove the single screw connecting the motherboard to the base of the phone by using the #00 Phillips screwdriver.

Step 8



- Lift the motherboard out of the base of the phone.

Step 9 — Camera



- Using the opening tool, pry up the camera attachment from the motherboard.

To reassemble your device, follow these instructions in reverse order.