

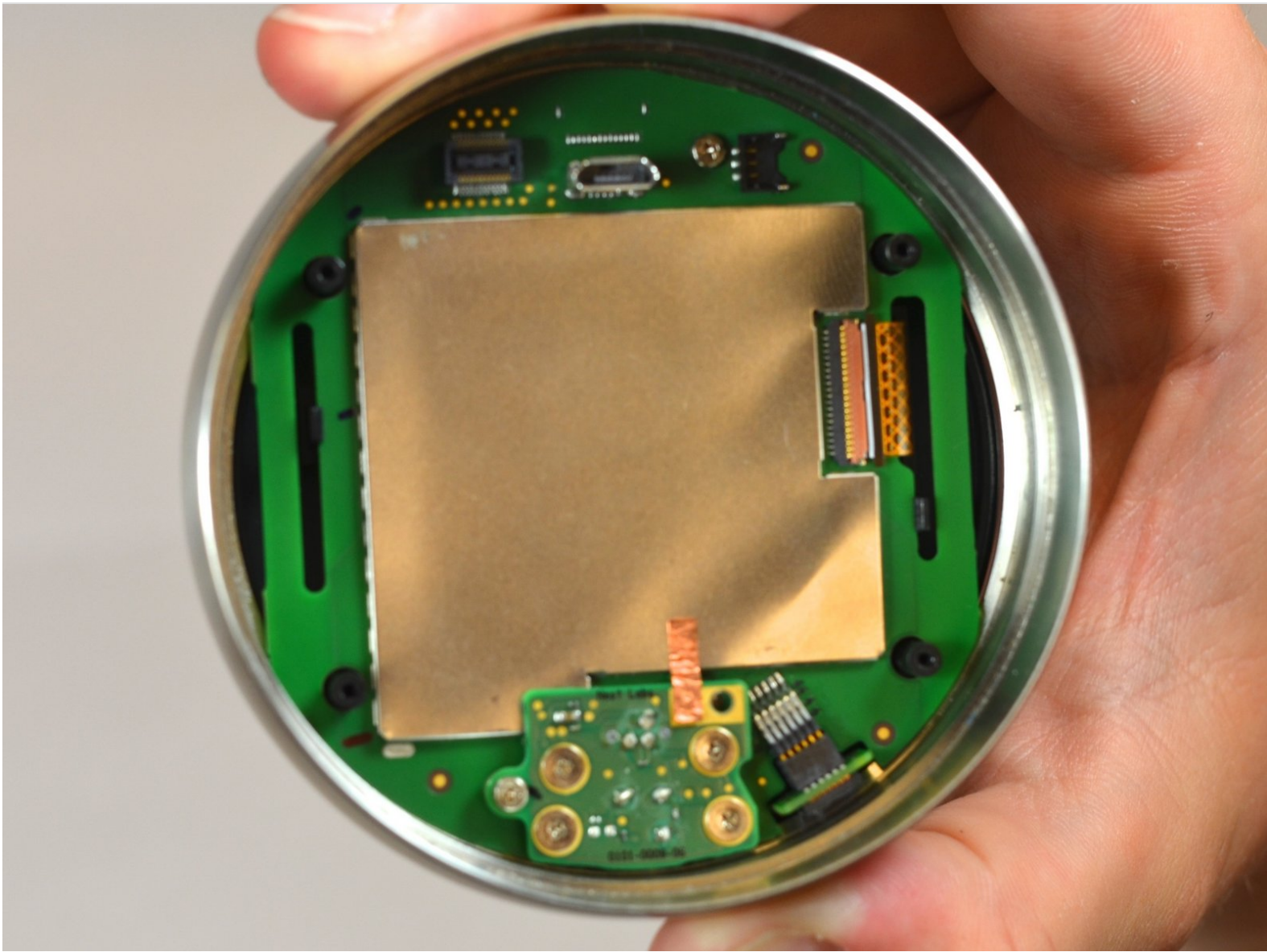


Nest Learning Thermostat 2nd Generation

Auto-Away Sensor Replacement

The replacement of the auto-away sensor in the thermostat, is necessary if the Nest will not automatically adjust to temperature. The auto-away sensor detects when people are moving around and will adjust the temperature accordingly.

Written By: Justin Curry



INTRODUCTION

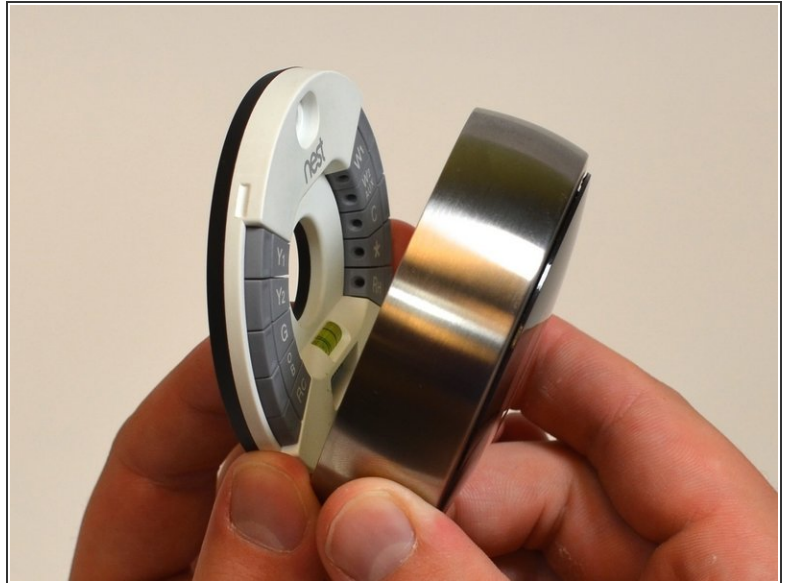
When replacing the auto-away sensor, battery removal is necessary. The battery replacement guide should be a prerequisite before starting. The tools required are tweezers and a Phillips #0 screwdriver.



TOOLS:

- [Phillips #0 Screwdriver](#) (1)
 - [Tweezers](#) (1)
-

Step 1 — Removal from Wall



- Grasp the display's metal outer ring with your fingers and pull directly away from the wall.

Step 2 — Open Display



- Turn the display over.
- Remove the four 6 mm screws from the back of the display using a Phillips #0 screwdriver.

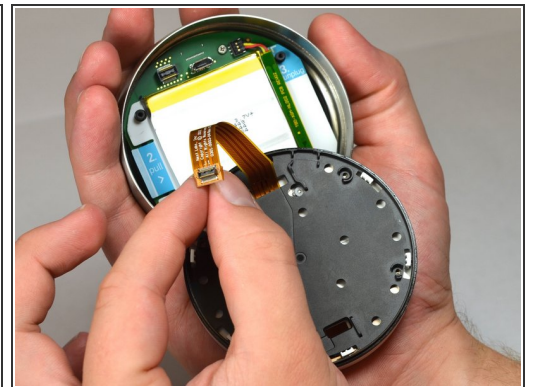
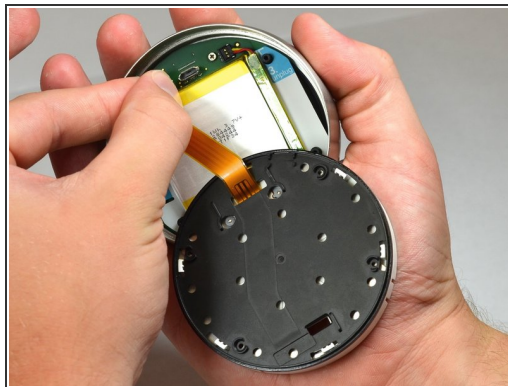
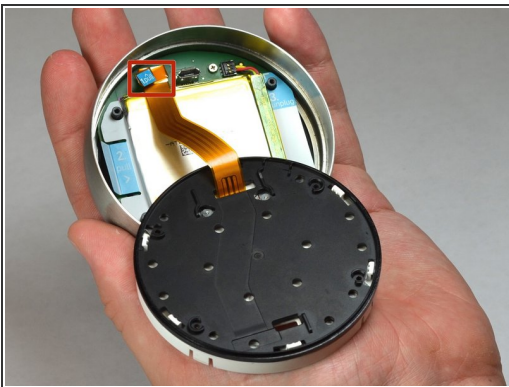
Step 3 — Remove the back of the display



- Pinch the gray 20-pin connector with your fingers and pull directly away from the display.

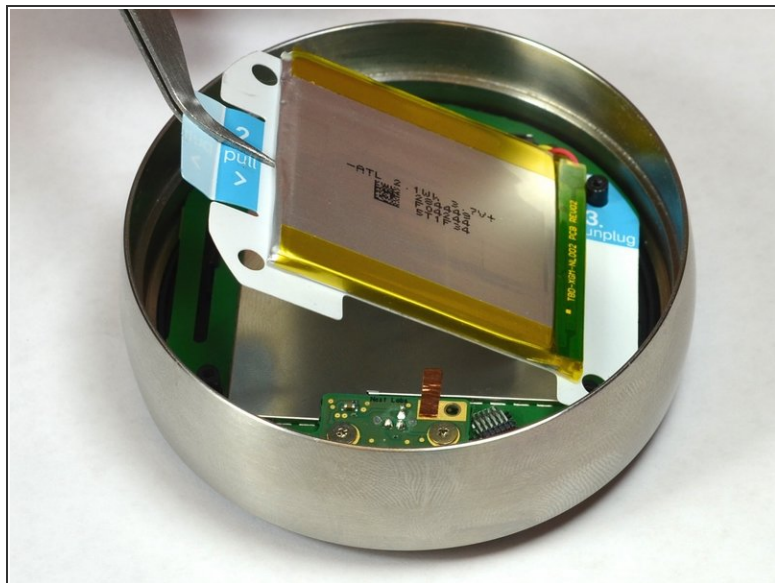
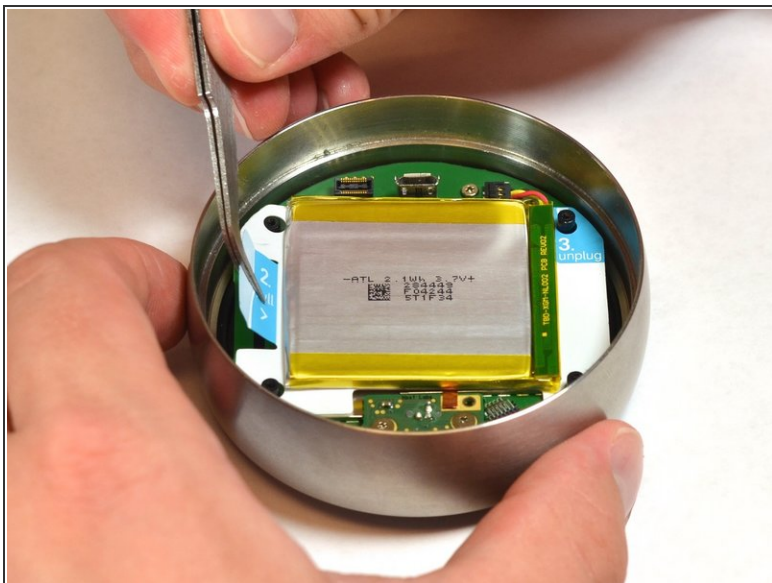
⚠ Do NOT pull too far as there is a ribbon on the back panel connecting the 20-pin connector to the display.

Step 4 — Disconnect the base connection ribbon cable.



- Locate the blue pull tab at the end of the ribbon which says, "1. Pull".
- Grasp the tab with your fingers and pull directly away from the motherboard.

Step 5 — Lift battery from the base



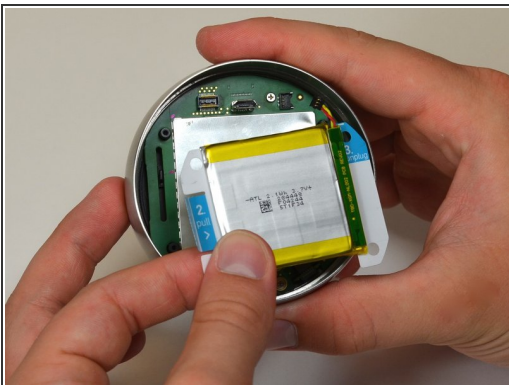
- Locate the blue tab which says, "2. Pull".
 - Use tweezers to pull the battery up and away from the display.
- ⚠ Do NOT pull too far, as the battery is still connected to the motherboard and must be unplugged.

Step 6 — Disconnect the battery from the motherboard



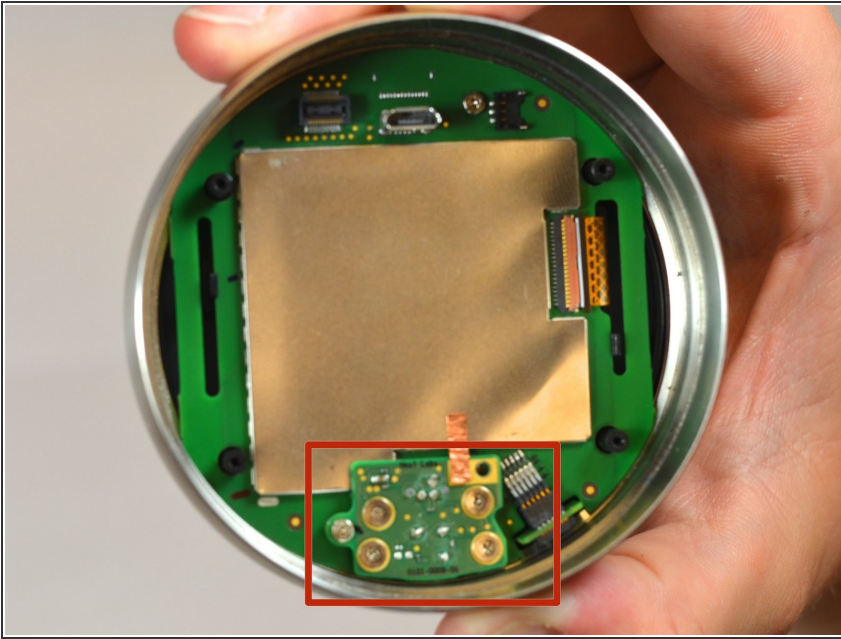
- Locate the blue tab which says "3 unplug".
- Grasp the battery with your fingers. Pull gently directly away from the display to unplug the battery from the motherboard.

Step 7 — Remove battery from the display



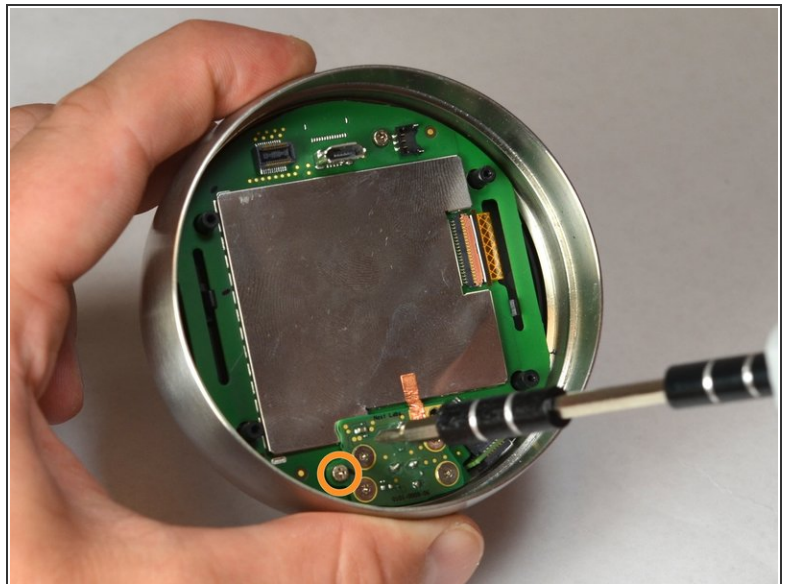
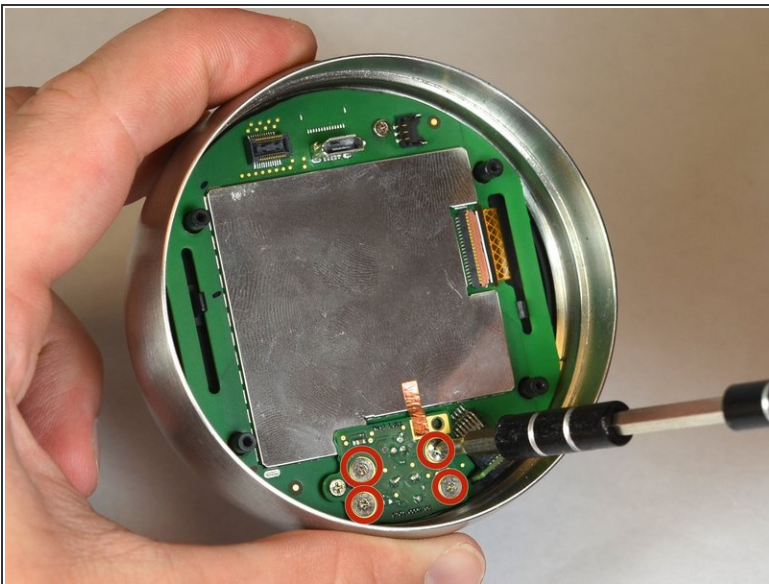
- Grasp the battery with your fingers and pull directly away from motherboard to separate the battery from the display.

Step 8 — Locate auto-away sensor



- Locate the auto-away sensor.

Step 9 — Remove screws



- Remove the four 3mm screws with a #0 Phillips screwdriver.
- Remove the one 4mm screw located at the edge of the auto-away sensor. Use a #0 Phillips screwdriver.

Step 10 — Remove auto-away sensor



- Lift the auto-away sensor from motherboard using tweezers.
- Peel the copper foil gently from the EMI shield.

To reassemble your device, follow these instructions in reverse order.