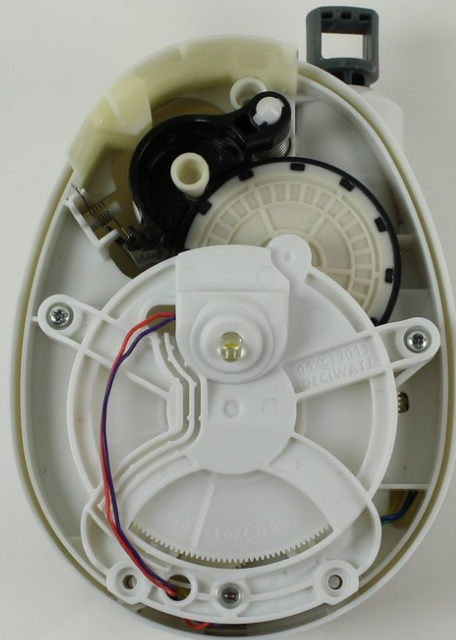




# GravityLight LED Replacement

This guide shows how to get to the GravityLight's LED and then replace it.

Written By: Brian Gouldsberry



---

## INTRODUCTION

If the white LED light will not turn on, then you will have to open up the device and replace the LED.

---

### TOOLS:

- [Phillips #00 Screwdriver](#) (1)
  - [Solder](#) (1)
  - [Tweezers](#) (1)
  - [Flush Wire Cutter](#) (1)
  - [Soldering Iron](#) (1)
-

## Step 1 — Removing the Front Panel



- Flip the GravityLight on its back and place it on a sturdy surface.
- Unscrew the three 2cm Phillips #00 screws on the back of the GravityLight's body.

## Step 2 — Opening the Device Housing



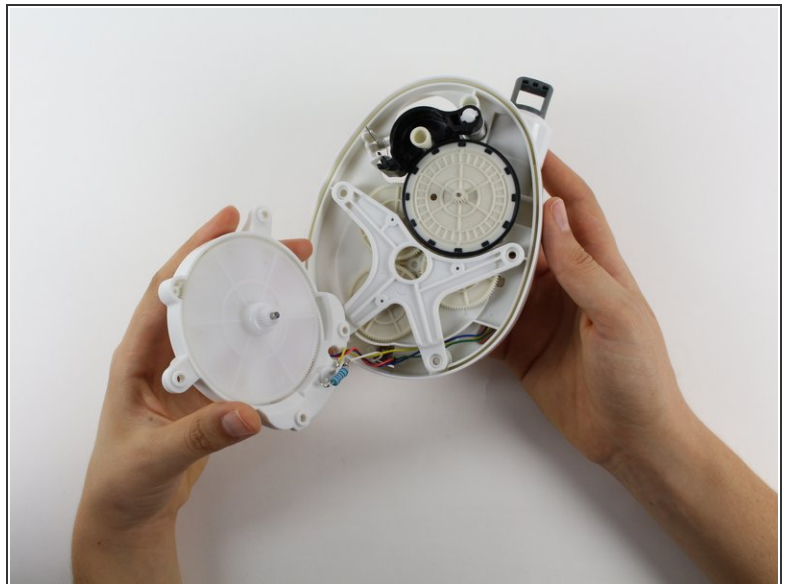
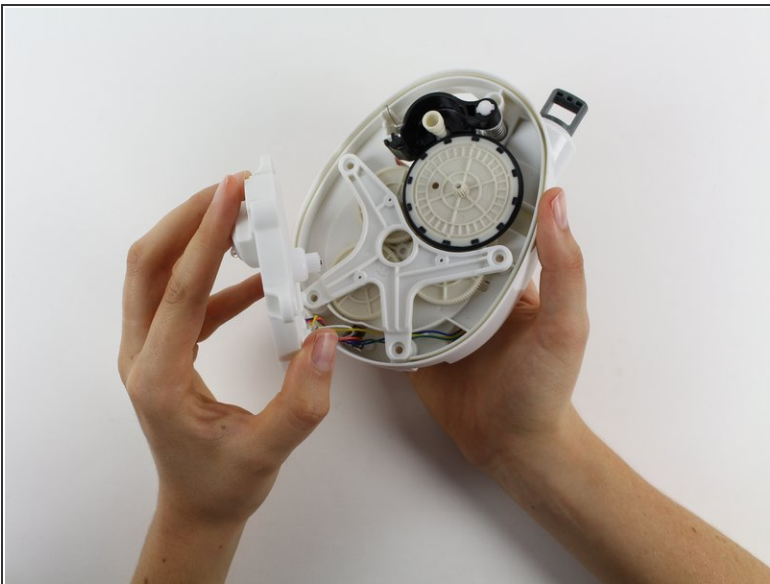
- ⚠ Some of the internal pieces may loosen or fall out during disassembly.
- Firmly grasp both parts of the GravityLight body and pull them apart.


### Step 3 — Removing the Back Panel Screws



- Place the back panel, the larger of the two pieces, on a sturdy surface with its back down.
- Unscrew the two 2cm Phillips 00 screws on the inside of the back panel.

### Step 4 — Removing the LED Housing



 Hold the LED housing in your hand, but do not separate it too far otherwise you will tear the wires.

- Lift the LED housing away from the back panel.

## Step 5 — Remove the White Gear from the LED Housing



- Grab the outside of the large, white gear in the LED housing and pull the gear out of the housing.

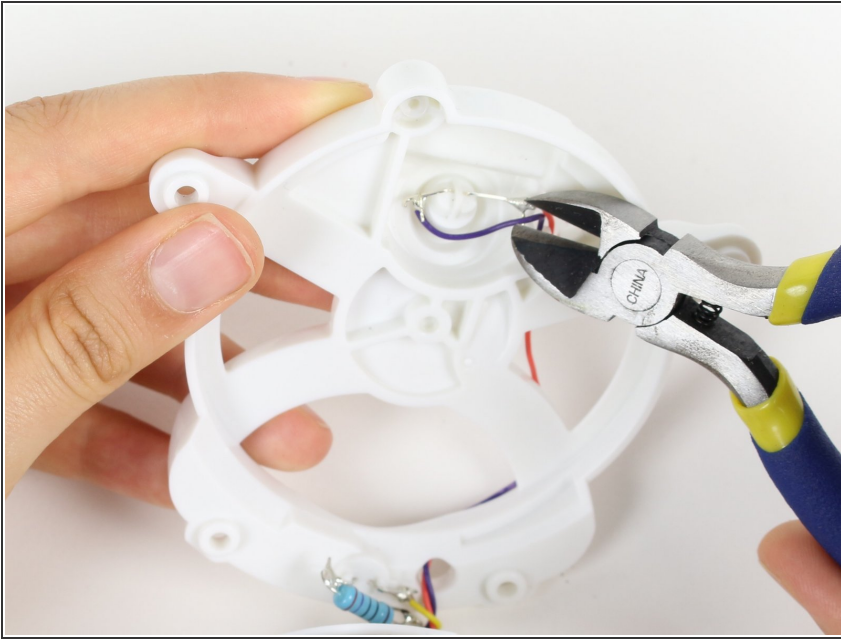
## Step 6 — Position the LED Housing



- Set the LED housing flat on a sturdy surface so that the back of the LED and the wires are exposed.

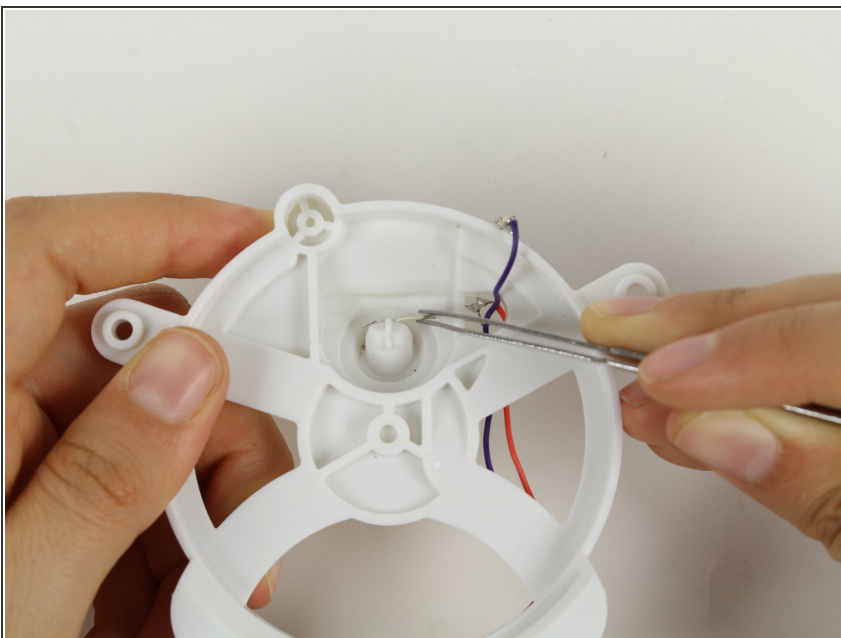


## Step 7 — Cut the Wires



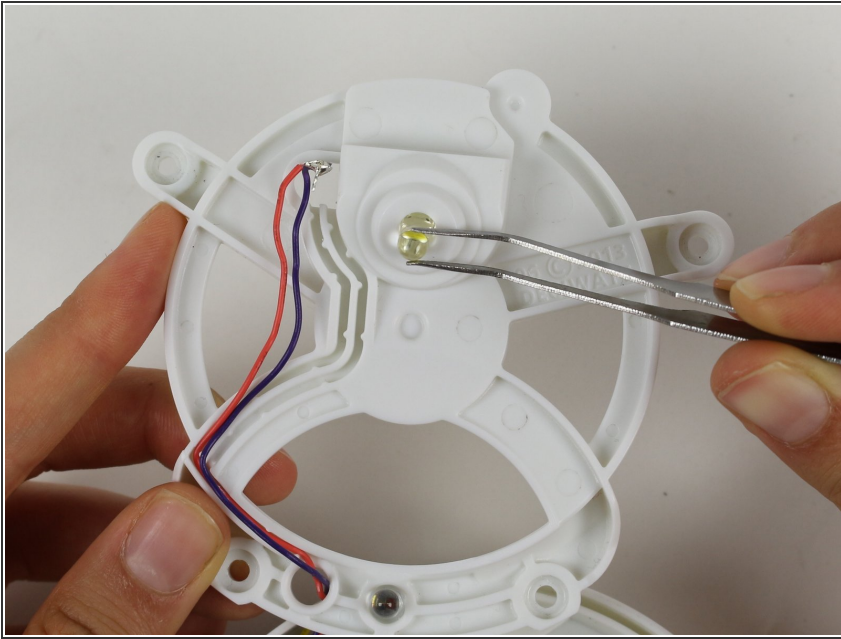
- Place the GravityLight's back panel aside.
- Use the Flush Wire Cutter to cut both the purple wire and the red wire that connect to the LED.

## Step 8 — Bend the LED Leads



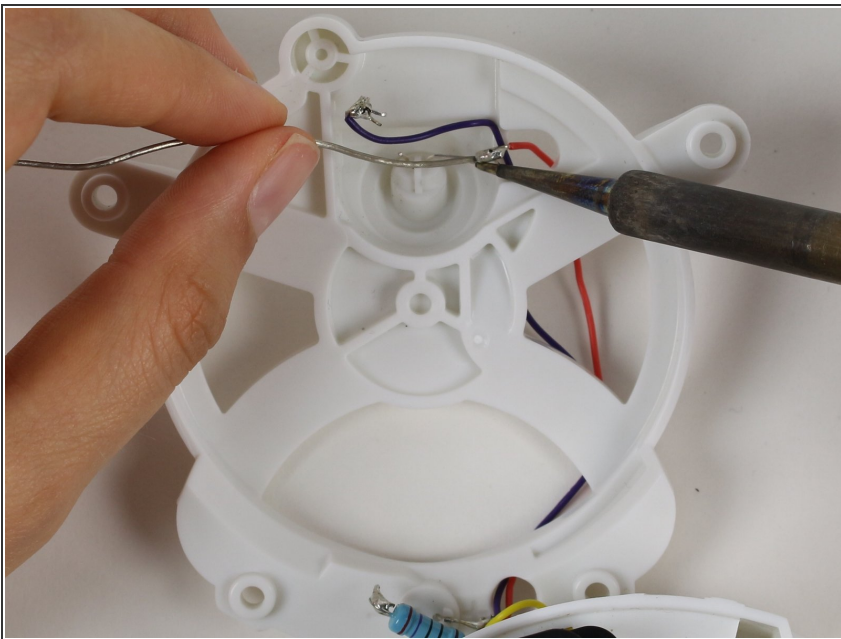
- Take tweezers and bend the leads (the silver wires coming out of the bulb) so that the leads are straight.
- ⓘ The straight leads will make the LED easier to take out.

## Step 9 — Remove the LED



- Flip the LED housing over.
- Pull the LED out with tweezers.

## Step 10 — Soldering the New LED



- ✦ For reassembly: Flip the LED housing back over.
- ✦ Put the new LED in its spot. Solder the red wire and the purple wire back onto the new leads.
- ✦ Make sure that you pair each wire to the correct lead. If the LED still does not light, switch the wires on the leads.
- ✦ For information on how to solder look here: [How To Solder and Desolder Connections](#)

To reassemble your device, follow these instructions in reverse order.