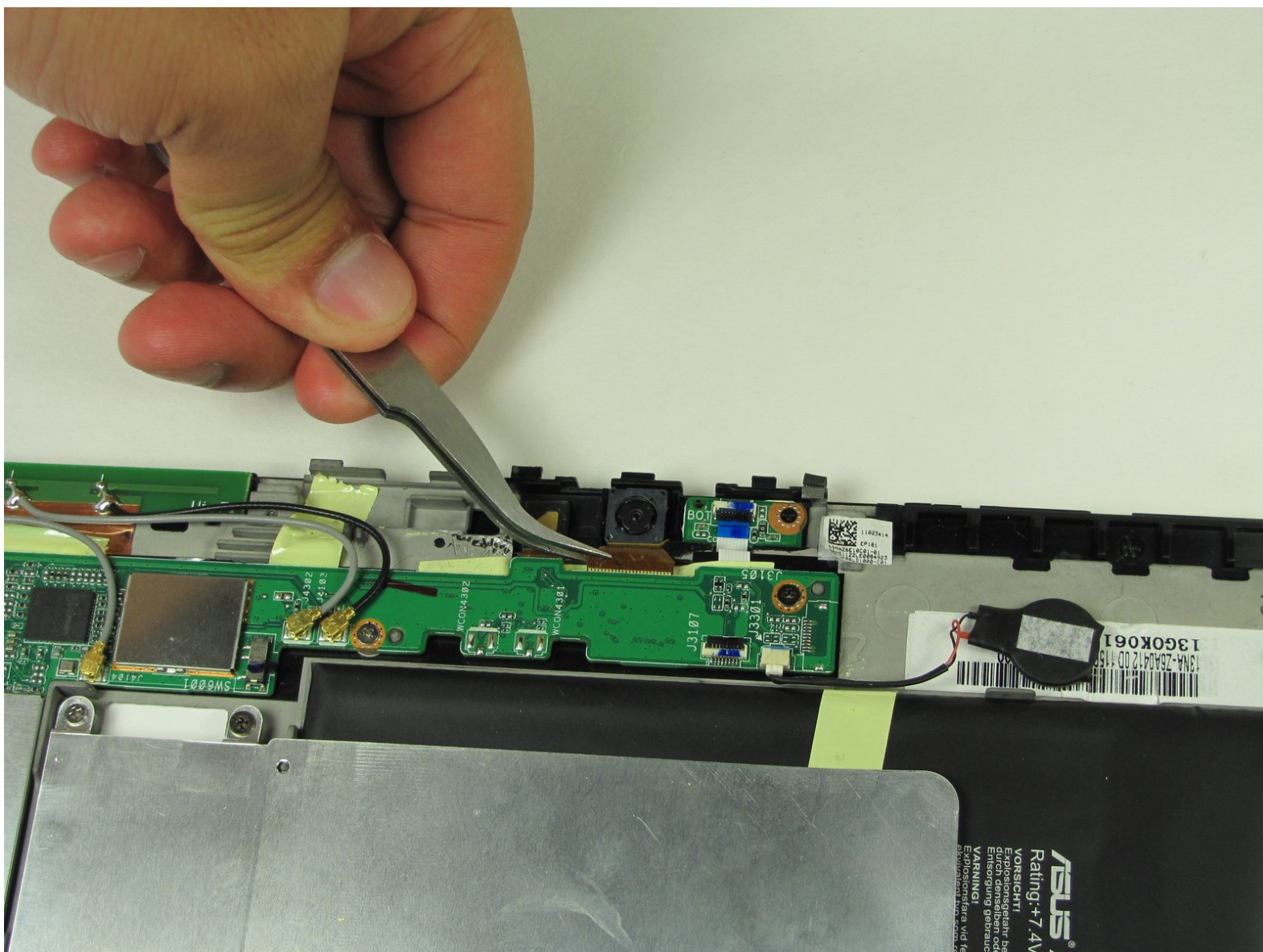




# ASUS Eee Pad Transformer Back Facing Camera Replacement

This guide will describe the procedure of removing and replacing the back-facing camera in just two steps.

Written By: Sandy Babich



This document was generated on 2020-11-21 07:58:11 PM (MST).

---

## INTRODUCTION

The back-facing camera is somewhat exposed on the device and therefore is susceptible to damage. Cameras are somewhat of a luxury on a device and may not be a crucial for extending the device's life, but a simple replacement is well worth the time.

---

### TOOLS:

- [Tweezers](#) (1)
  - [T5 Torx Screwdriver](#) (1)
  - [iFixit Opening Tools](#) (1)
  - [Phillips #00 Screwdriver](#) (1)
-

## Step 1 — Back Panel



- Use T5 Torx Screwdriver to remove two 4.5 millimeter T5 screws on either side of the port on the bottom of the tablet.

## Step 2



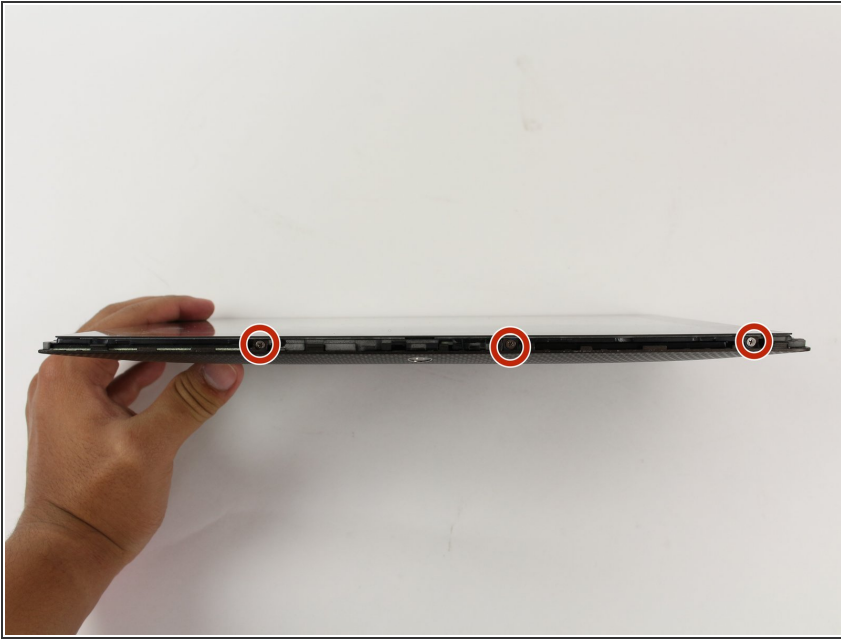
- Use the Plastic Opening Tool to pry between the main tablet body and the outer rim casing. Remove the outer rim casing by prying all the way around the device and pulling the rim upward.
- ⓘ The physical buttons are located on the outside of the rim on the right side, proceed with the guide to locate internal buttons.

## Step 3



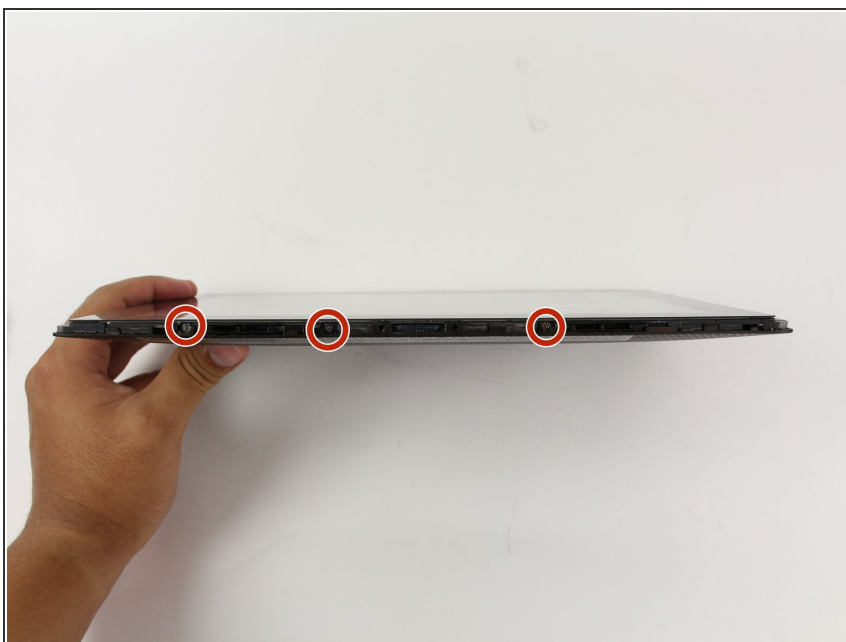
- Remove the four 2 millimeter Phillips #00 screws at the corners of the tablet.

## Step 4



- Use a Phillips #00 Screwdriver to remove the three 3 millimeter screws securing the front panel to the back panel found above the camera area, on the top portion of the tablet.

## Step 5



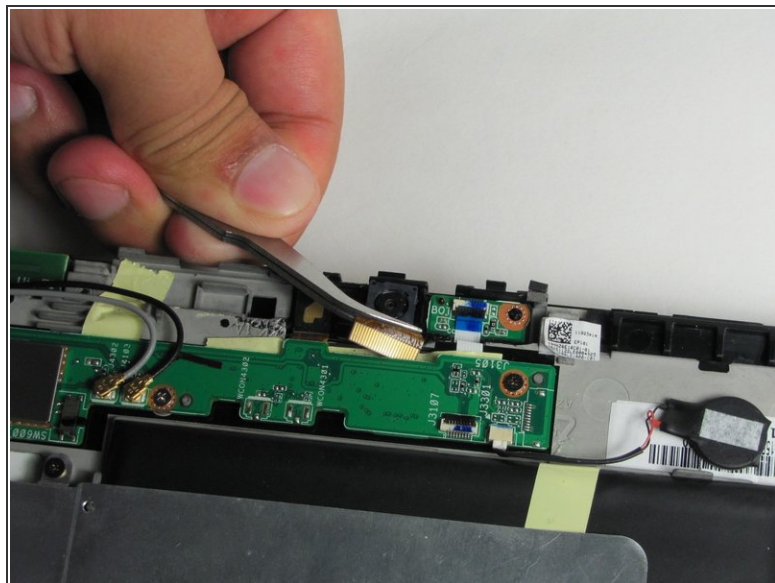
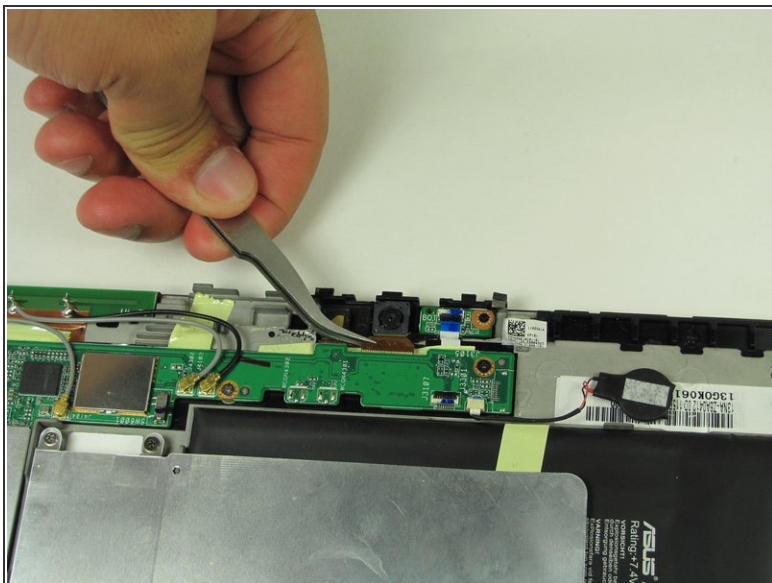
- Use a Phillips #00 Screwdriver to remove the three 3 millimeter screws securing the front panel to the back panel found on the bottom portion of the tablet near the port.

## Step 6



- Remove back panel by pulling away from the remaining device.

## Step 7 — Pull out flap



- Use Tweezers to pull out gold flap connected to bottom of camera.
- Pull the gold flap to take out the camera.

To reassemble your device, follow these instructions in reverse order.