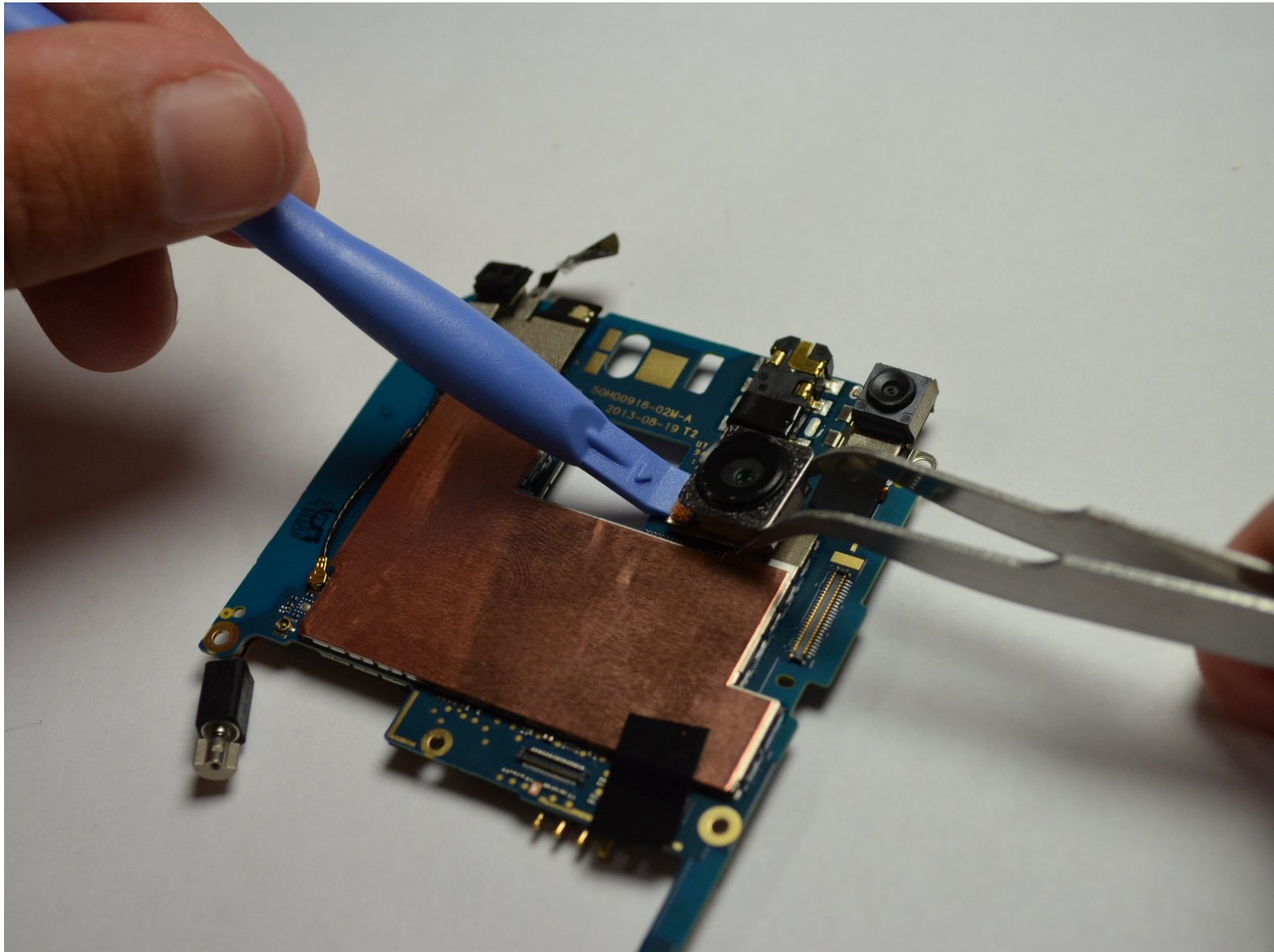




HTC Desire 700 Dual Sim Rear Facing Camera Replacement

This guide will explain how to remove and replace the rear facing camera.

Written By: Steven Pate



INTRODUCTION

If the rear facing camera has become nonfunctional, it may be replaced. To check if the back facing camera is faulty, open the camera application. If the screen does not display an image when the camera application is opened, then it is likely responsible and faulty. It may be replaced by following this step-by-step guide.



TOOLS:

- [T4 Torx Screwdriver](#) (1)
 - [Spudger](#) (1)
 - [Tweezers](#) (1)
 - [iFixit Opening Tools](#) (1)
-

Step 1 — Back Cover



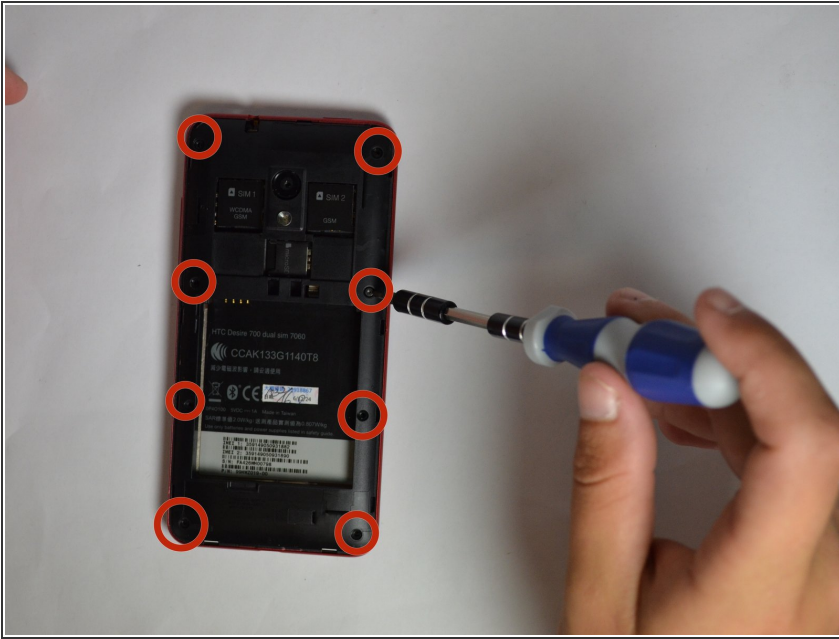
- Use the spudger to pry the back cover off.

Step 2 — Removing Battery



- Use spudger tool to pry under the battery to lift it up and out.

Step 3 — Remove 8 Torx Screws



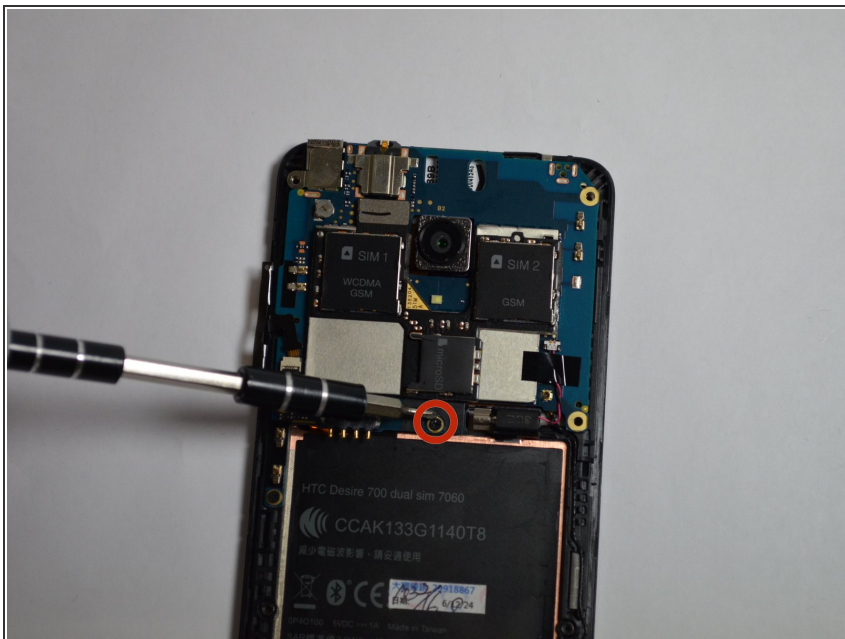
- Remove eight 8.3mm T4 screws with the Torx screwdriver.

Step 4 — Prying Off Rear Panel



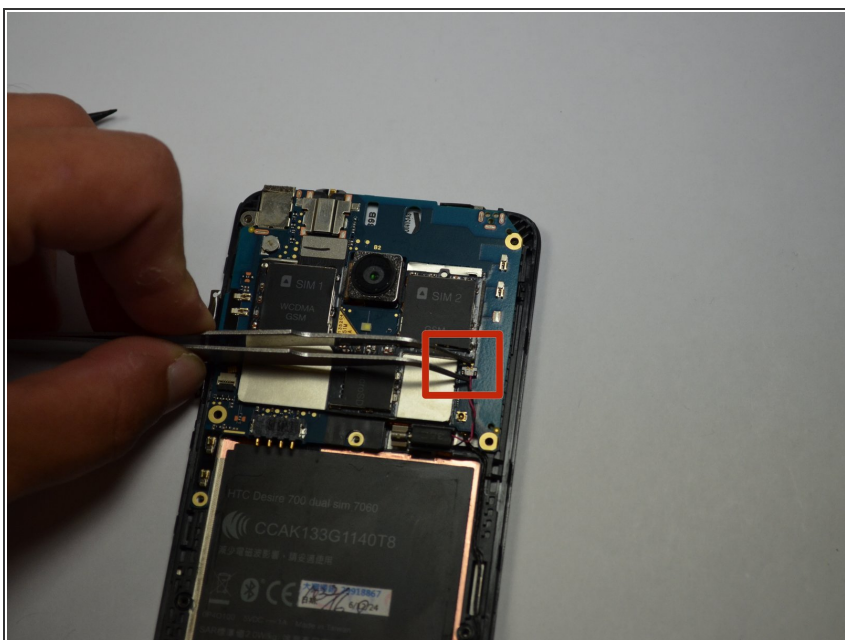
- Pry the back panel of the screen using the plastic opener.
 - Work your way gently around the device, using picks as necessary to keep the back panel separated.
- ⚠ Use caution not to damage the device, as it takes force to remove the rear panel.

Step 5 — Motherboard



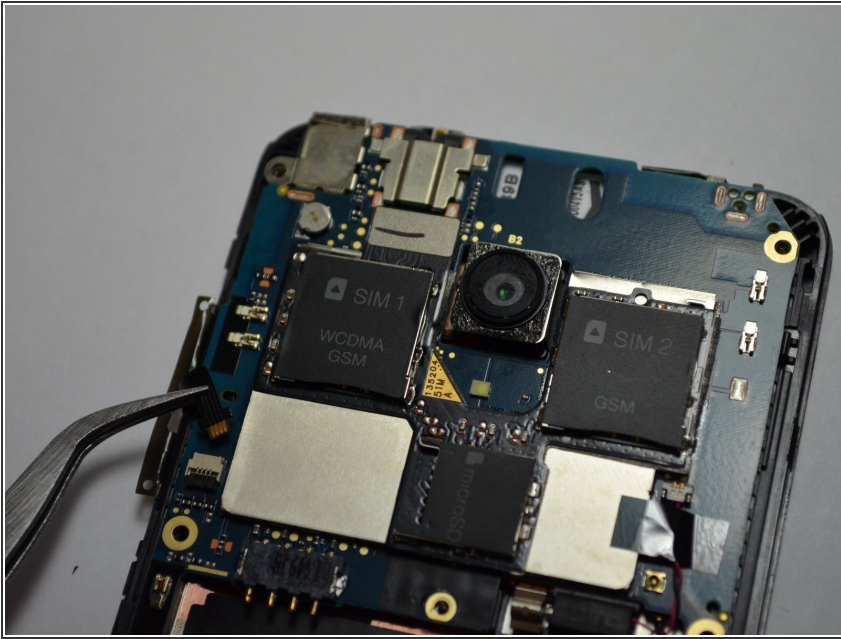
- Remove the 3mm PH00 screw located at the bottom center of the motherboard using a P#00 Phillip's head screwdriver.

Step 6 — Disconnect Vibrator Wire



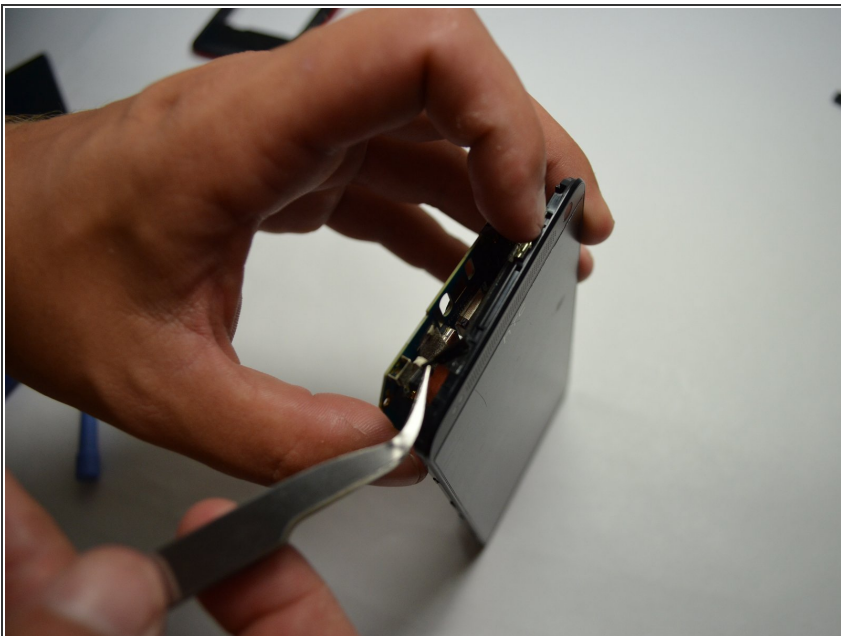
- Using the tweezers gently disconnect the wire from the vibrator located on the motherboard.

Step 7



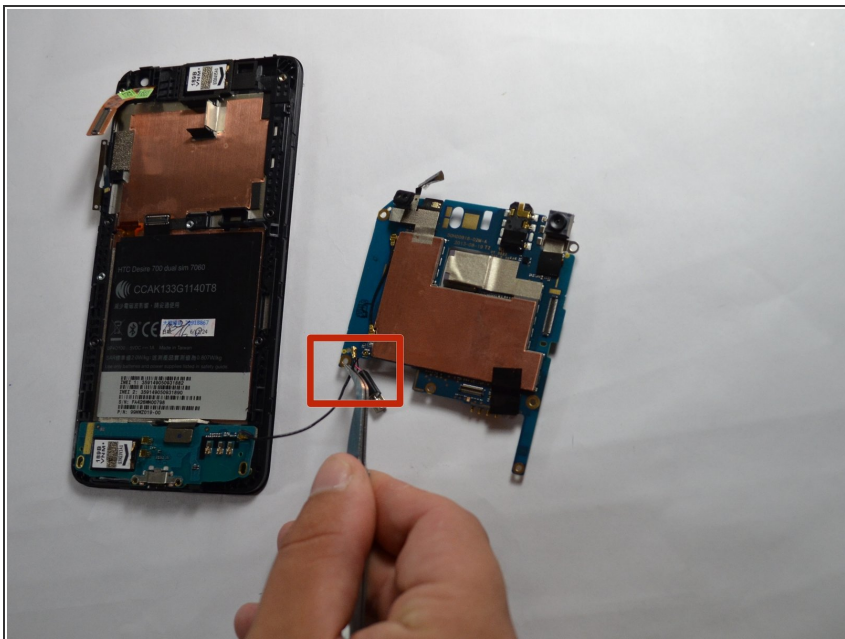
- Remove volume control button ribbon with tweezers.

Step 8



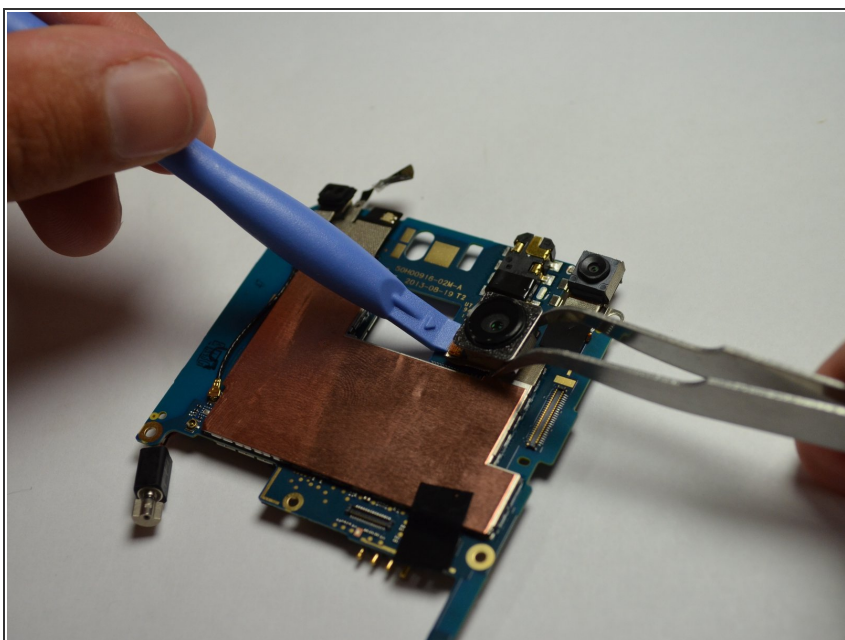
- Carefully remove the ribbon attached to the top of the motherboard.

Step 9



- Unsnap the wire from the printed circuit board (PCB) using the tweezers.

Step 10 — Remove Rear Facing Camera



- Carefully remove the ribbon that attaches the camera to the front screen using the tweezers and the plastic opening tool.

To reassemble your device, follow these instructions in reverse order.