



# Dell Optiplex GX620 Floppy Drive Replacement

This guide will show you how to remove the floppy drive from a Dell Optiplex GX620.

Written By: Kristina



## INTRODUCTION

The GX620 has a 3.5 inch floppy disk drive. The back end of the traditional floppy drive contains a port for a standard cable that connects to the motherboard. Also here is a connection for power from the power supply.



### TOOLS:

- [Phillips #1 Screwdriver](#) (1)
  - [Anti-Static Wrist Strap](#) (1)
-



## Step 1 — How to unplug and discharge before repair



- Power down your PC and remove the power cord from the back.

## Step 2



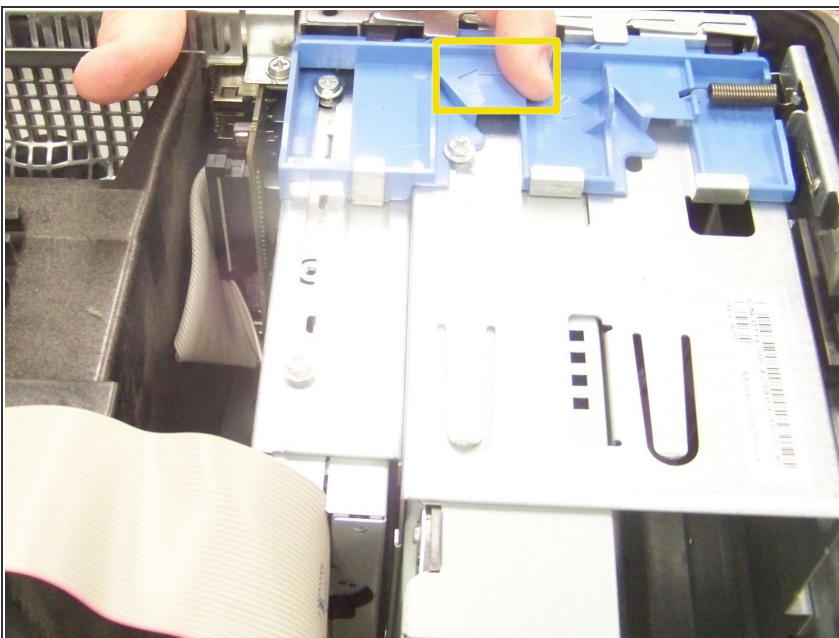
- Press and hold the power button for about 10 seconds, then release.
  - ⓘ This helps drain any remaining power stored in the capacitors, so that you can safely work on the internal components.

### Step 3 — Dell Optiplex GX620 Side Panel Disassembly



- With the computer standing upright, firmly pull on the tab at the back of the computer.
- When the side panel pops free, gently pull the panel away from the computer.
- ❗ If you have trouble freeing the side panel from the case, you may need to pull the tab a bit harder.

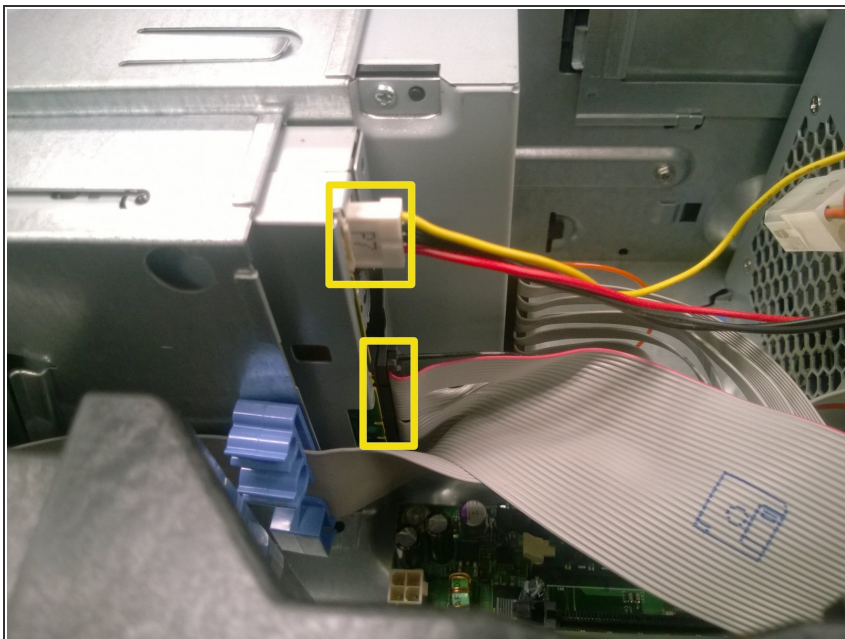
### Step 4 — Remove the drive panel



- Slide the blue latch downward until the panel can be removed from its hinges.

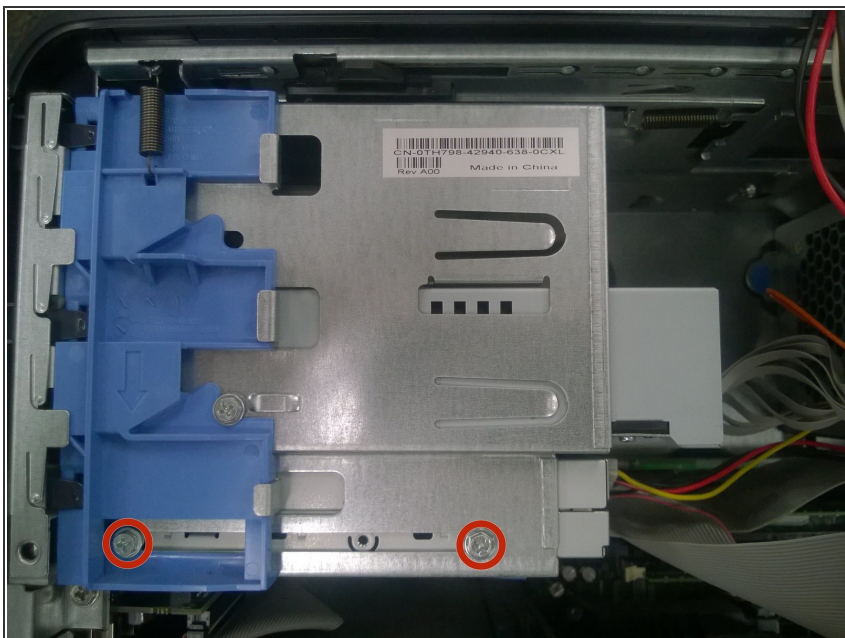


## Step 5 — Disconnect the cables



- Gently remove the floppy-drive and power cables from the back of the floppy drive.

## Step 6 — Remove the screws



- With a Phillips #1 screwdriver, remove the screws connecting the floppy drive to the drive bay. Set the

screws aside in a location where you may use them at a later time.

## Step 7 — Remove the floppy drive



- To remove the unconnected floppy drive from the drive bay, slide the drive towards the front of the computer.

To reassemble your device, follow these instructions in reverse order.