



Toshiba Thrive Front Camera Replacement

If your camera does not turn on or..., it may need to be replaced.

Written By: Kason



INTRODUCTION

This guide will show you how to replace your front camera.

TOOLS:

- [Phillips #0 Screwdriver](#) (1)
 - [Spudger](#) (1)
-

Step 1 — Back Cover



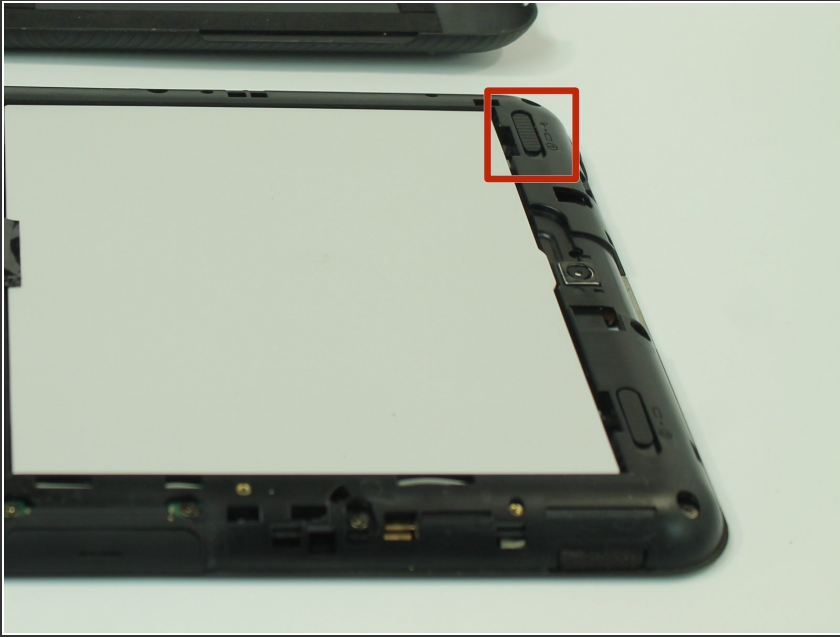
- Make sure the lock switch for the back cover is unlocked.
- The cover is unlocked when the switch is slid in the direction of the 'unlock' icon.

Step 2



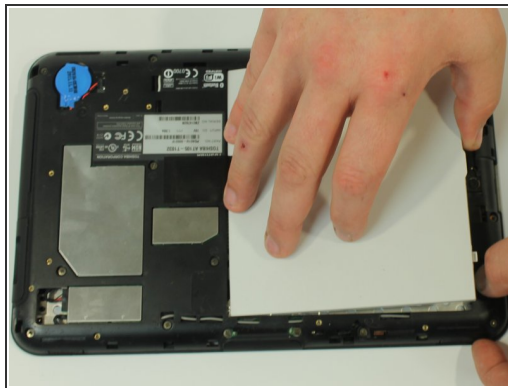
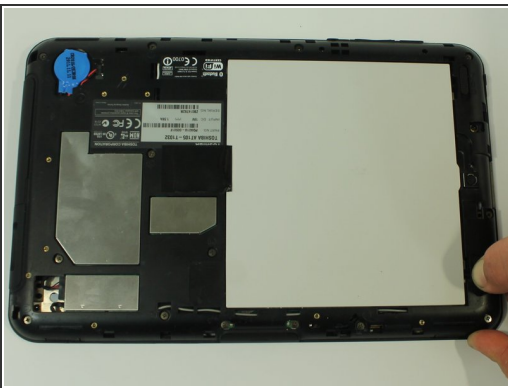
- Remove back cover by prying away from the Thrive.
- The easiest place to pry from is one of the two speakers.

Step 3



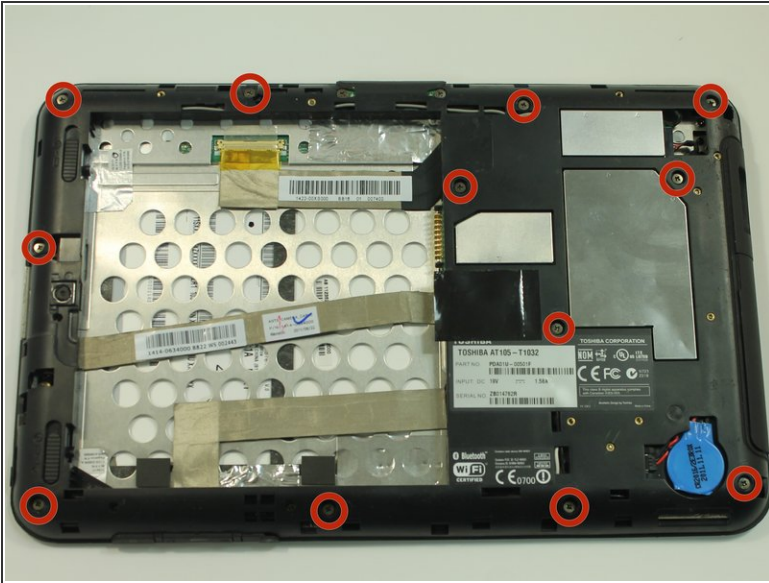
- To remove the battery, make sure the lock switch is in the unlocked position.
- The battery is unlocked when the switch is slid to the unlocked position.

Step 4



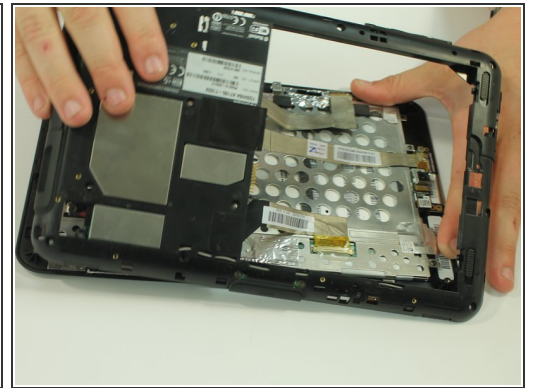
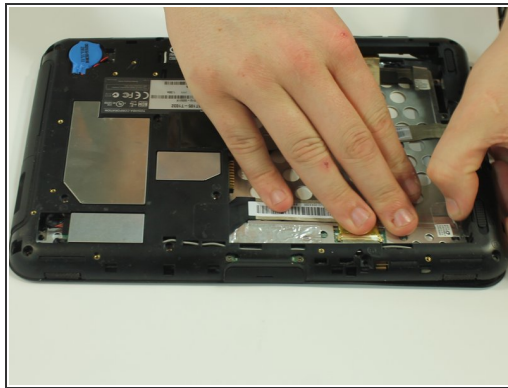
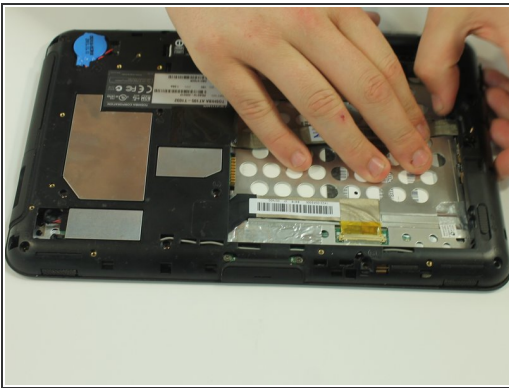
- Slide the battery switch release to the right.
- While holding the switch in place, lift up the battery.

Step 5 — Midframe



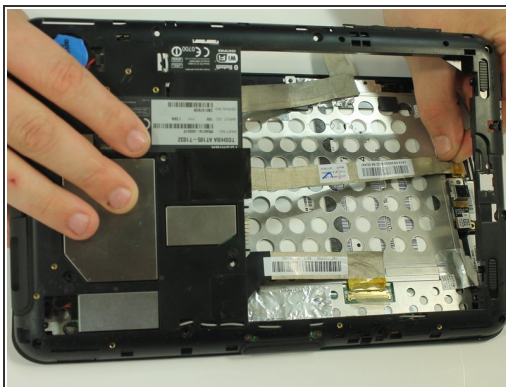
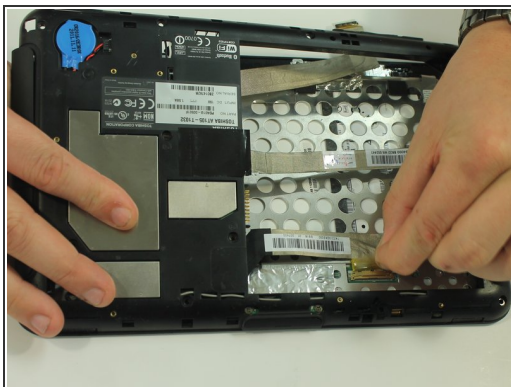
- Start by using a screwdriver to remove the 12 screws holding on the back cover. The screws are 5mm in length and require a PH0 screwdriver.
- All of these screws are identical so don't worry about getting them mixed up.

Step 6



- Start to gently pry the back of the device off, while leaving it loosely in place.
- Be careful not to tear or damage the cables when removing the back.

Step 7



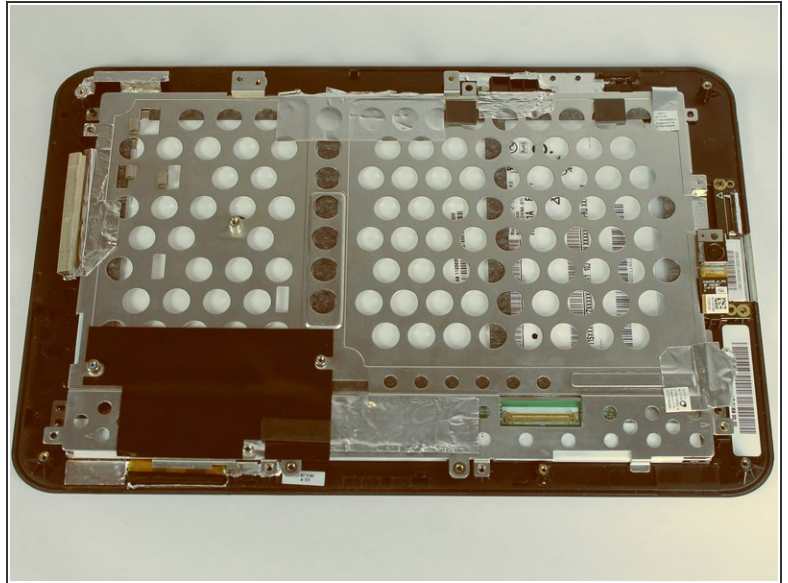
- Once the back of the case is off, disconnect the wires by gently pulling on the plastic tabs as shown.

Step 8



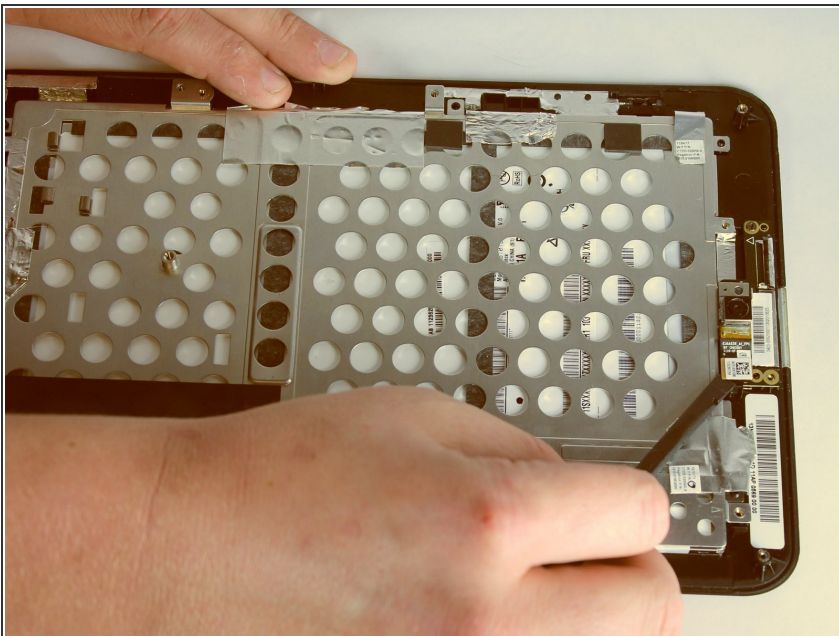
- Carefully open the device like a book and lay the two halves beside each other.

Step 9 — Front Camera



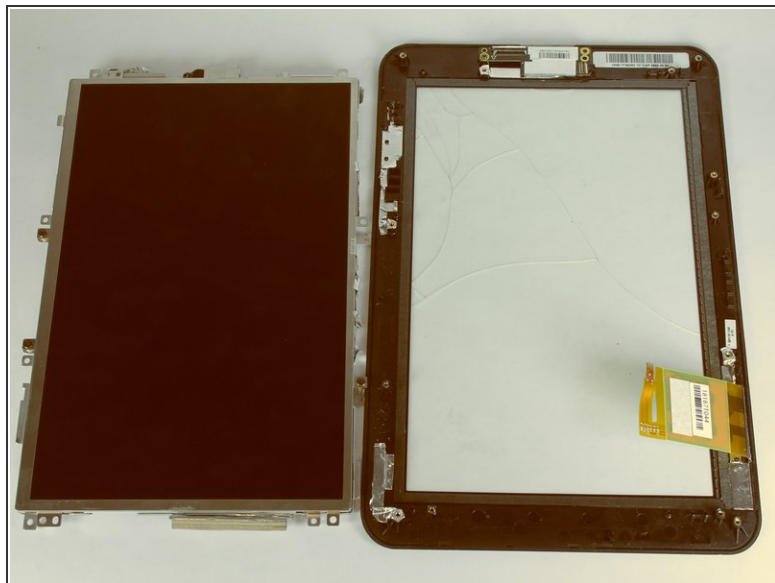
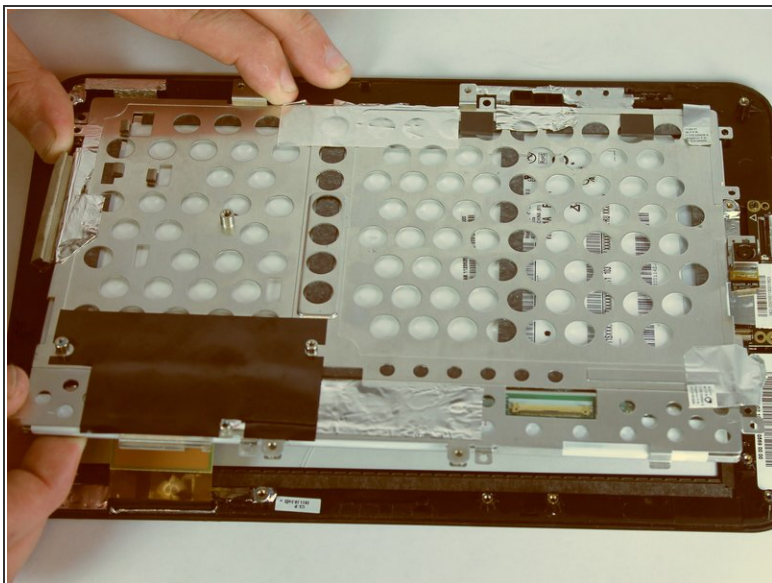
- Separate the two halves of your Thrive
- Using a Phillips screwdriver, remove the six screws holding the LCD in place. These screws are 3mm in length and require a PH0 screwdriver.

Step 10



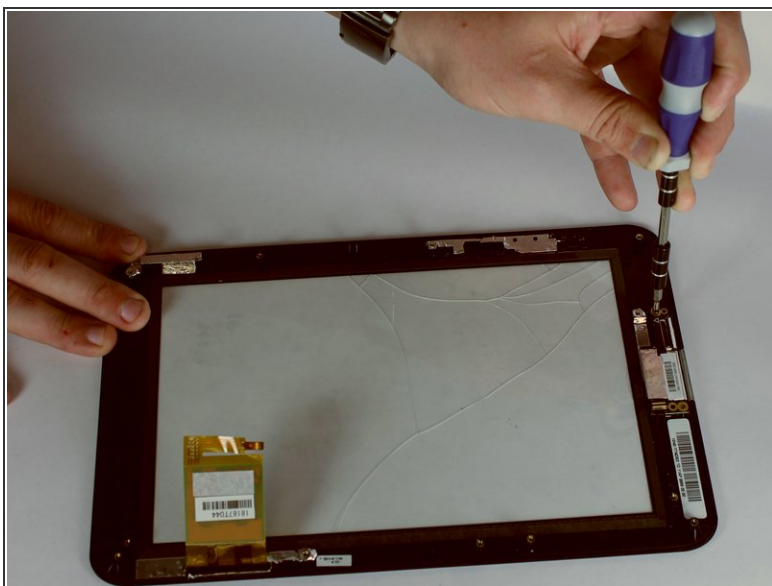
- With a spudger, disconnect the cable connecting the camera to the motherboard.

Step 11



- Lift up the LCD from the screen and place it on the side

Step 12



- Remove the one screw holding the camera in place. The screw is 3mm in length and requires a PH0 screwdriver.
- Lift up the camera from the screen.

To reassemble your device, follow these instructions in reverse order.