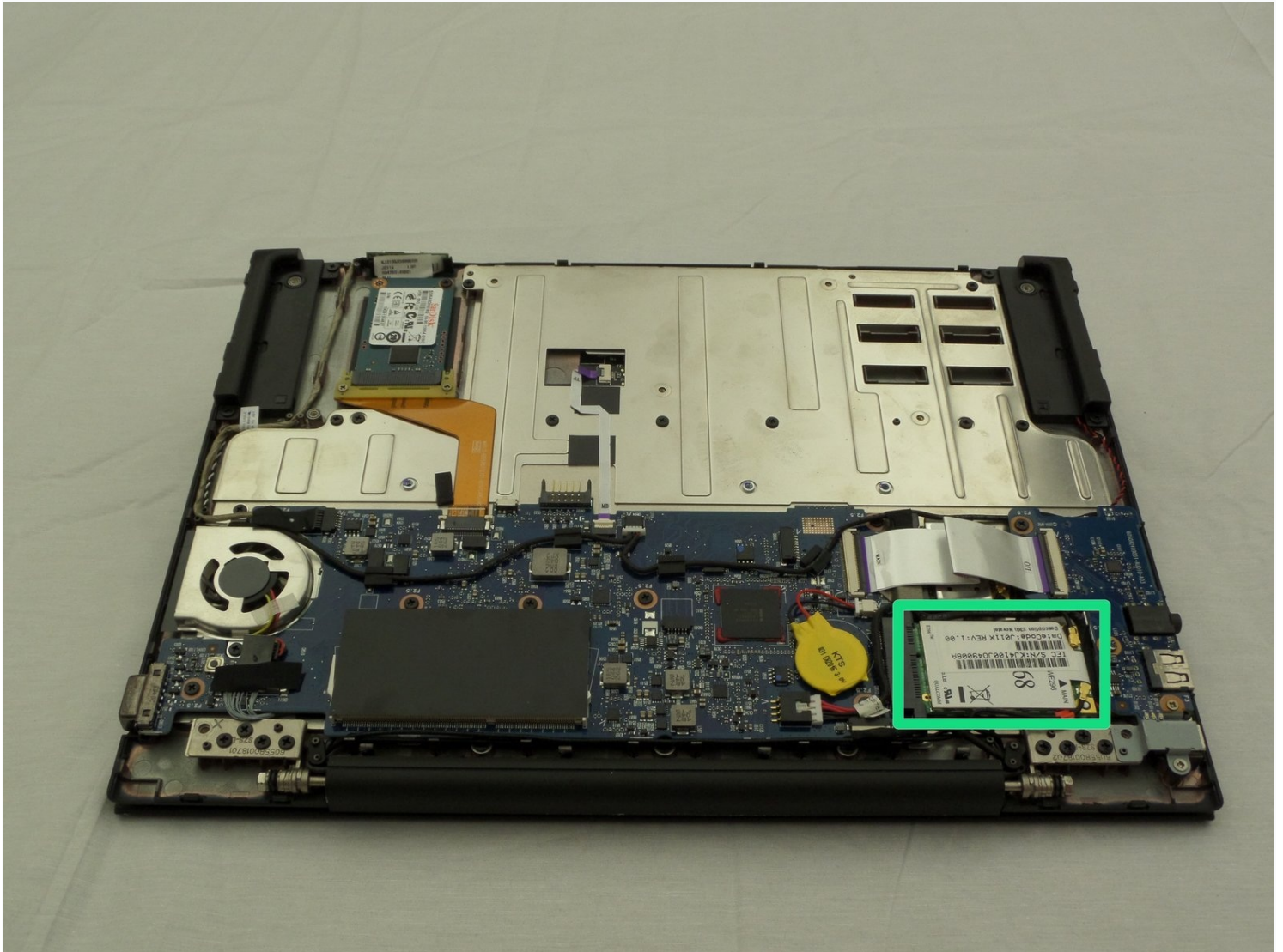




Cr-48 Chromebook Network Card Replacement

The Cr-48 Chromebook shipped with a combined...

Written By: Robert McLaughlin



INTRODUCTION

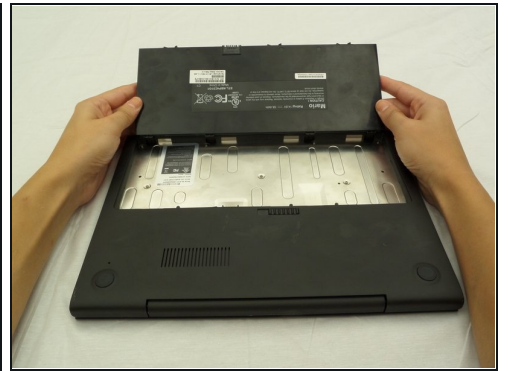
The Cr-48 Chromebook shipped with a combined Wi-Fi / Cellular network card that can be easily removed and replaced if necessary. Use this guide to replace a malfunctioning network card in a Cr-48 Chromebook.

TOOLS:

Phillips #00 Screwdriver (1)

Tweezers (1)

Step 1 — Battery



- Slide the switch on the bottom of the laptop until the battery pops out.
- Once the battery pops out, you can remove it.

Step 2 — Remove Rear Rubber Feet



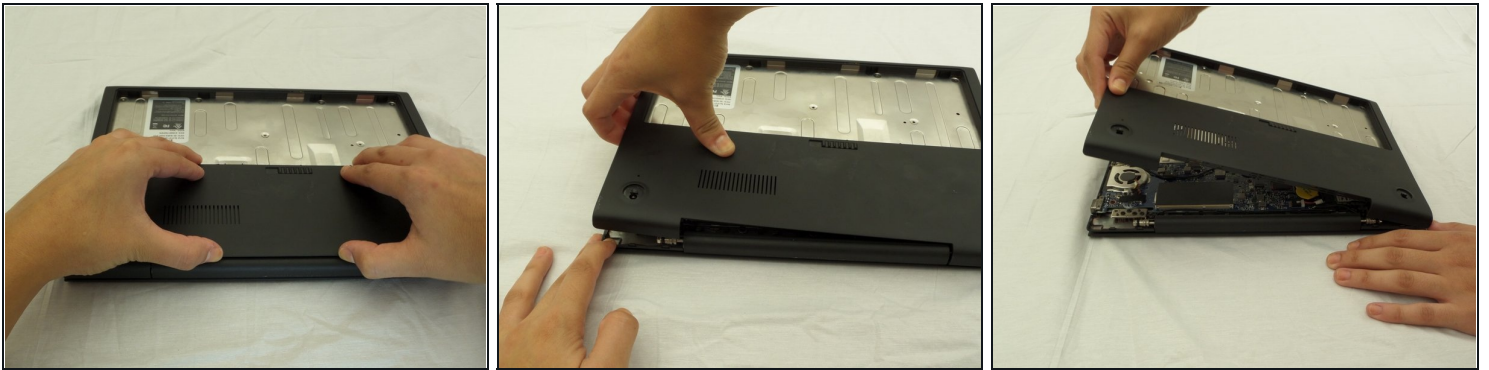
- Using a pair of [tweezers](#), remove the two rear rubber feet to expose two hidden screws.

Step 3 — Remove Screws



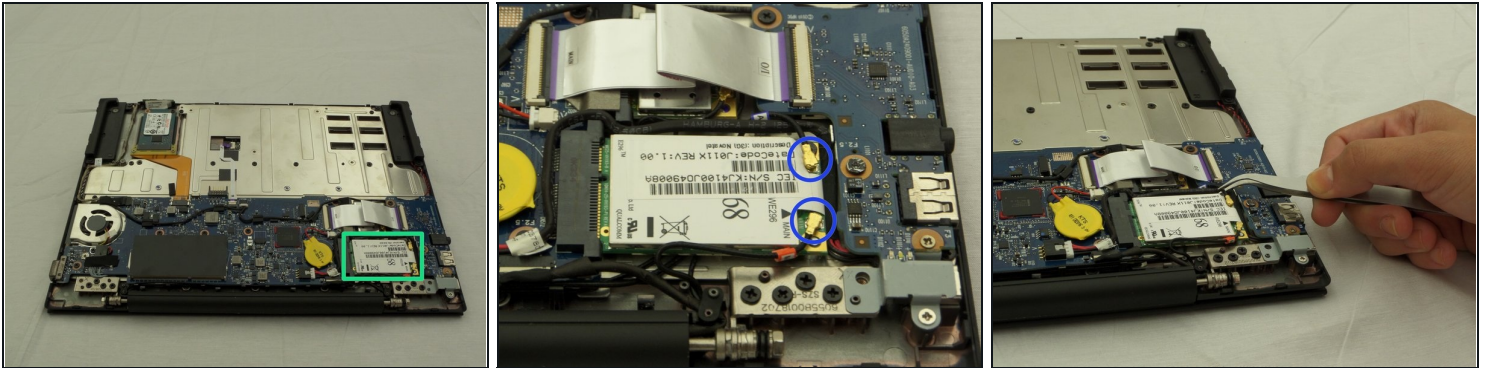
- Remove ten 3 mm screws in the battery compartment using a Phillips #00 screwdriver.
- Remove two 4.5 mm screws under the rubber feet using a Phillips #00 screwdriver.

Step 4



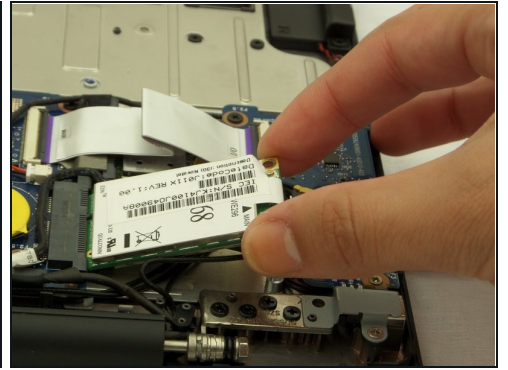
- Starting where the body of the laptop and the laptop screen meet, pry apart the lower case from the rest of the laptop.
- ① The case is easier to remove when separating in a clockwise motion, as seen in the pictures.

Step 5 — Identify the Network Card and Remove the Connectors



- Once you've removed the lower case, you should see the network card on the corner of the device containing the USB port.
- Disconnect the Wire connections on the network card using forceps or [tweezers](#).

Step 6 — Unscrew and Remove Network Card



- Remove Screw securing network card.
 - Size ph#00, approximately 3 mm long.
- ① Once the screw is removed, the network card will pop up.
- Pull the network card to remove it from the device.

To reassemble your device, follow these instructions in reverse order.