



IBM ThinkPad T42 Wi-Fi Card Replacement

A IMB ThinkPad T42 Wi-Fi card allows the device...

Written By: Kevin Rehm



INTRODUCTION

A IMB ThinkPad T42 Wi-Fi card allows the device to connect to a wireless network. If your Wi-Fi card is broken or needs to be replaced this guide will show you how.

TOOLS:

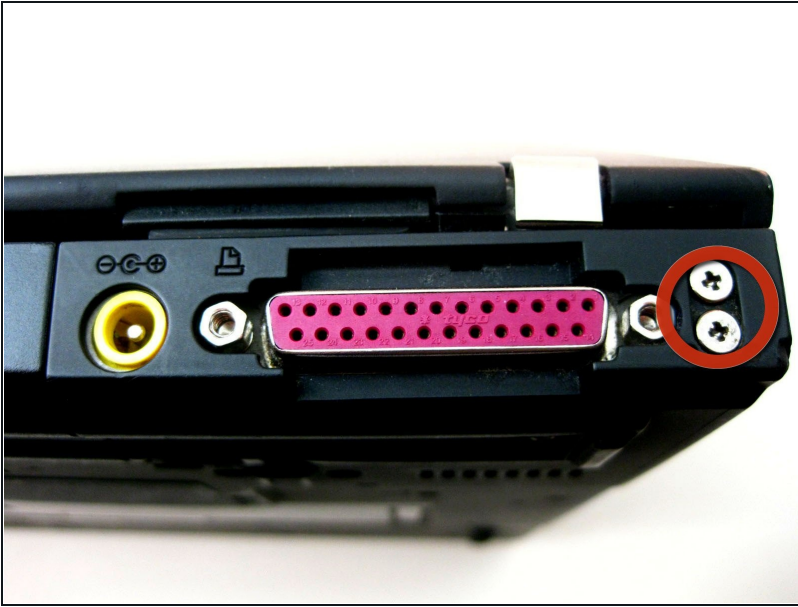
Phillips #0 Screwdriver (1)

Step 1 — Bottom cover



- Using a Phillips #0 screwdriver, identify and unscrew the twenty screws located on the underside of the T42.

Step 2 — Rear screws



- Unscrew the four Phillips screws located on either side of the rear of the T42 (there are two located on each end.)

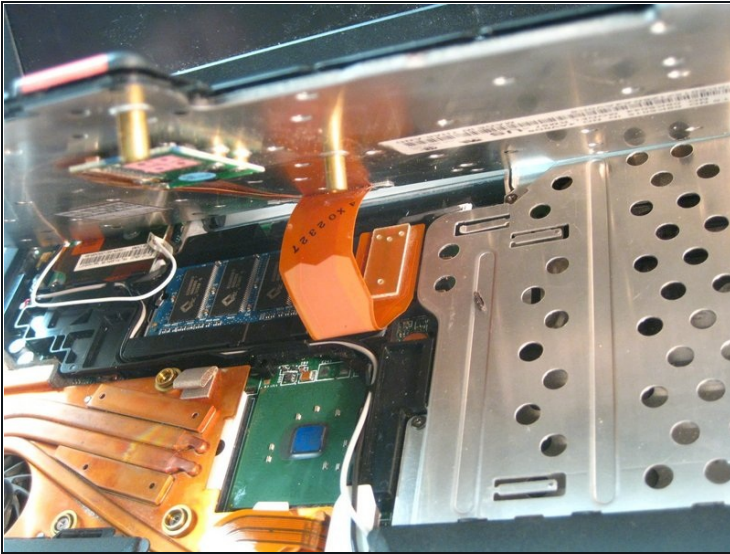
Step 3 — Keyboard and Trackpad



- Flip the laptop over and open the screen to access the keyboard and trackpad.
- ① The keyboard and trackpad are connected to the motherboard. Before removing the keyboard and trackpad, disconnect both components from the motherboard, as shown in the following step.

⚠ The bezel and keyboard will be loose, be careful.

Step 4



- Carefully maneuver the palm rest away from the keyboard, as both the keyboard and palm rest/trackpad will come off together.

⚠ Remember, both the keyboard and trackpad have connectors to the motherboard. Disconnect these before completely removing either component.

Step 5 — Wi-Fi Card



- To remove Wi-Fi card, first disconnect both display wires on the top right.

Step 6



- Then slide both of the metal pieces holding it down outwards, and it will pop up.

Step 7



- Carefully pull it out.

To reassemble your device, follow these instructions in reverse order.