



RCA RP3715A Speaker Replacement

This replacement guide will inform you how to replace the speaker. This guide will be used as a prerequisite for more intense replacement guides.

Written By: Myles Waiters



INTRODUCTION

This replacement guide will teach you how to replace a worn speaker. This will ensure the device has quality sound. If the speaker has not fixed the issue there may be an electrical shortage in the device.



TOOLS:

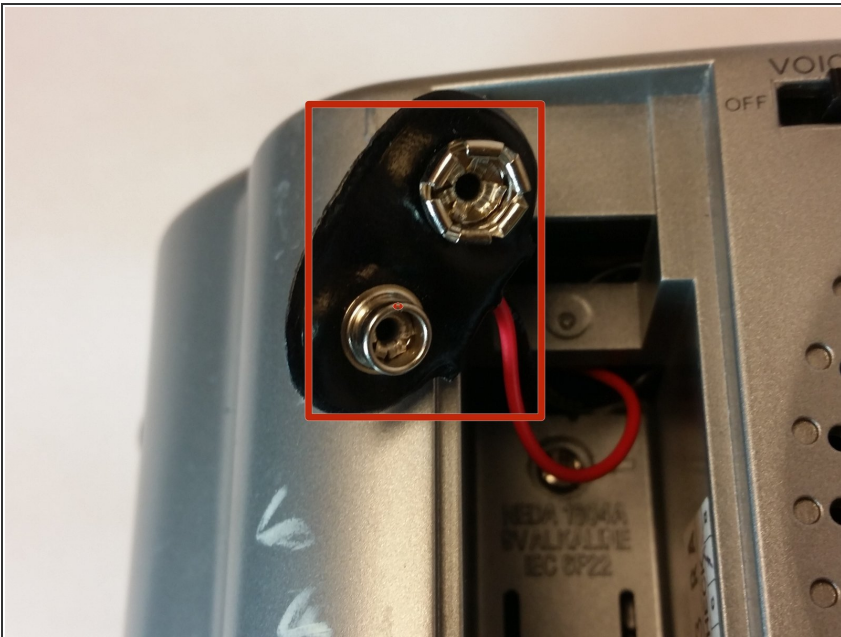
- [Phillips #000 Screwdriver](#) (1)
 - [Spudger](#) (1)
 - [Phillips #1 Screwdriver](#) (1)
-

Step 1 — Reaching the battery terminal.



- Push down on the clip to release pressure. The pull off the plastic cover.

Step 2 — Replacing the battery



- Remove the 9-volt battery from the battery terminal.

Step 3 — Getting inside the device.



- Take out the six screws located on the back of the device.
- The red screws are 10 mm Phillip's #1. The orange screws are 13 mm Phillips #1.
- Three screws are located on the back panel. One is located inside the battery carriage.
- Two screws are located on the on the back panel on the bottom left and right side.

Step 4 — Relieve extension cord tension.



- Remove the 10 mm Phillip's #1 screw.
- Then remove the metal reinforcement.

Step 5



- Using flathead screwdriver undo the release tabs.

Step 6



- Pry the release tabs with a spudger.
- Start with back of the device on the topside.

Step 7



- Pry open both tabs to remove the topside of the clock.

Step 8 — Speaker Replacement



- Remove the two 10mm Phillip's #1 screws. Also remove the two reinforcements holding the speaker in place.

To reassemble your device, follow these instructions in reverse order.