

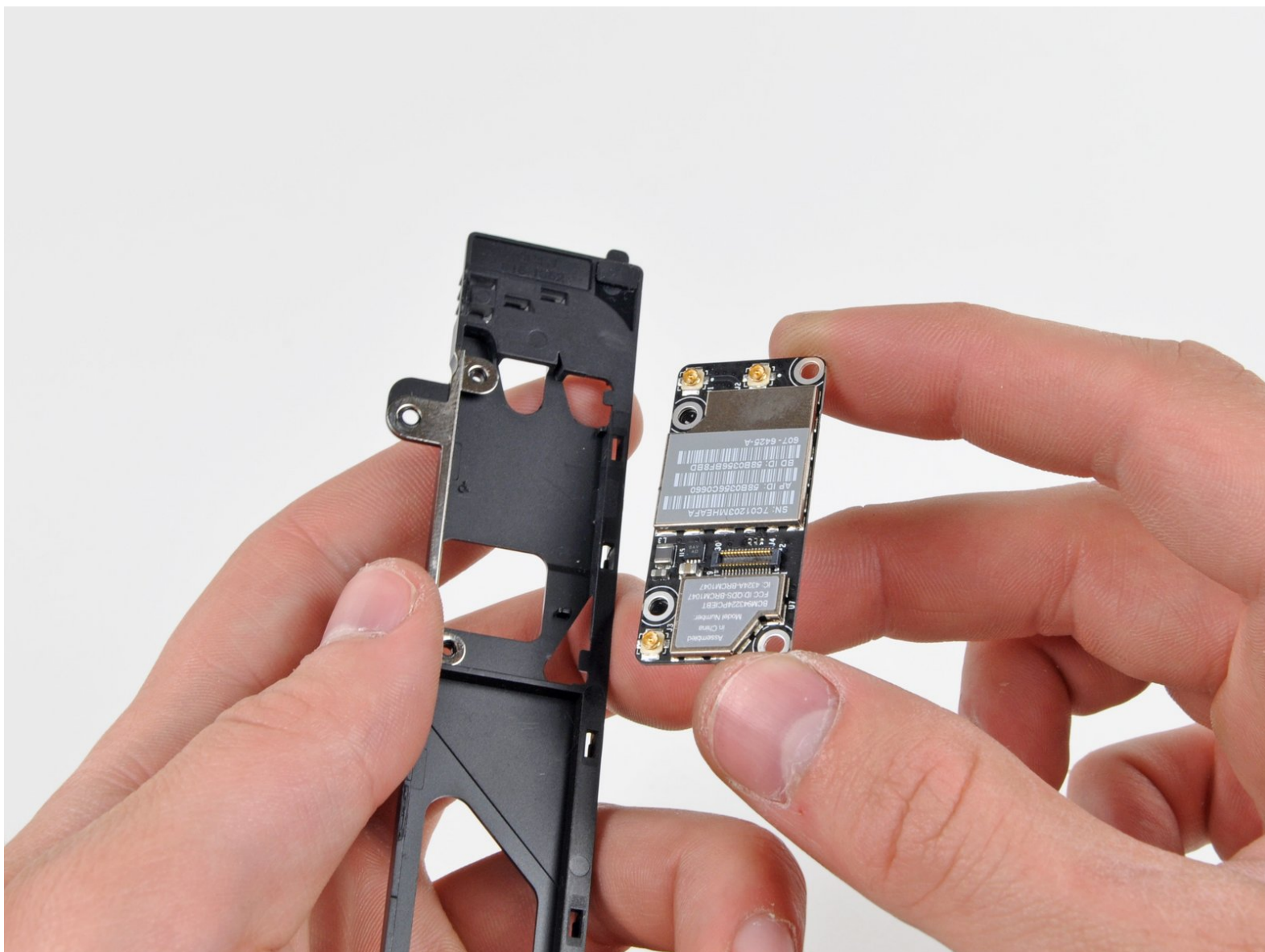


MacBook Pro 15" Unibody Mid 2010

AirPort/Bluetooth Board Replacement

Replace the AirPort/Bluetooth board on your MacBook Pro 15" Unibody Mid 2010.

Written By: Walter Galan



INTRODUCTION

Wireless connectivity issues? Use this guide to replace an inoperative AirPort/Bluetooth board.



TOOLS:

- [Phillips #00 Screwdriver](#) (1)
- [Spudger](#) (1)



PARTS:

- [MacBook Pro 15" Unibody \(Mid 2010\) Airport/Bluetooth Board](#) (1)

Step 1 — Lower Case



- Remove the following ten screws securing the lower case to the upper case:
 - Three 13.5 mm (14.1 mm) Phillips screws.
 - Seven 3 mm Phillips screws.

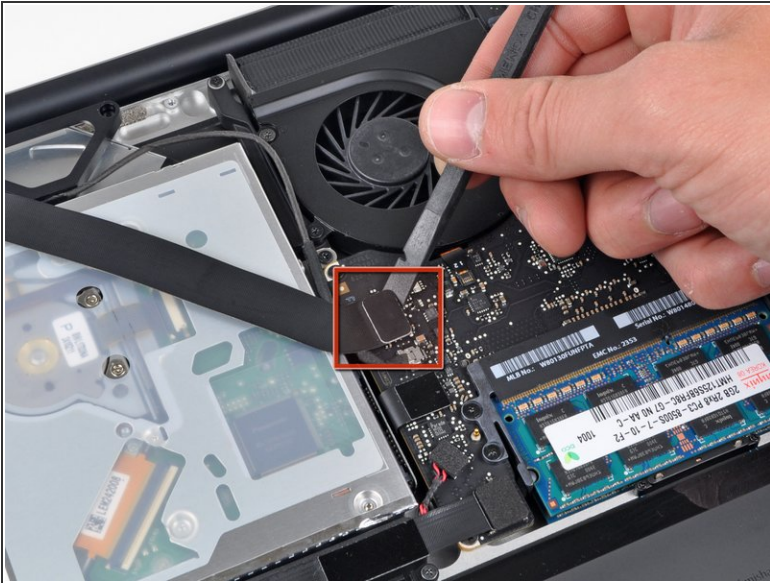
★ When removing these screws, note how they come out at a slight angle. They must be reinstalled the same way.

Step 2



- Using both hands, lift the lower case near the vent to pop it off two clips securing it to the upper case.
- Remove the lower case and set it aside.

Step 3 — AirPort/Bluetooth Cable



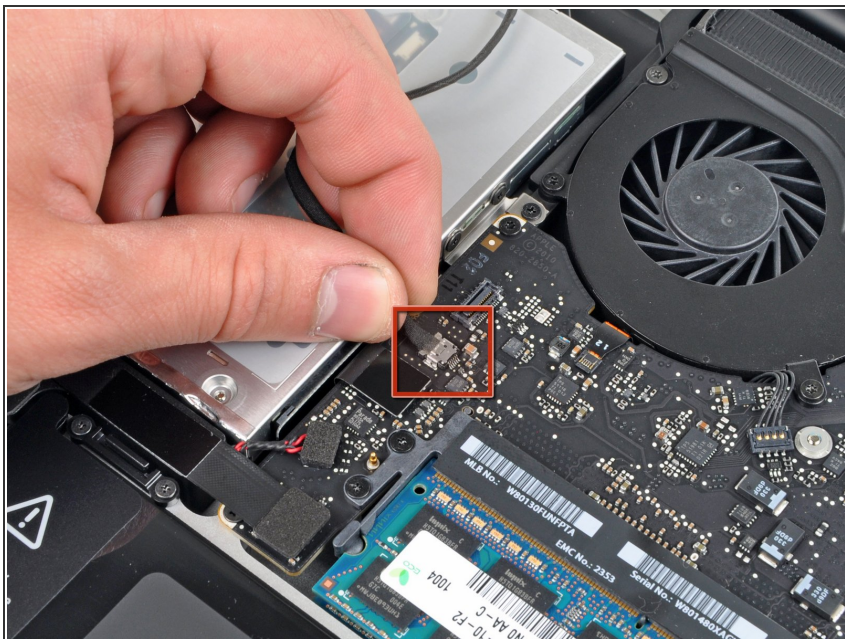
- Use the flat end of a spudger to pry the AirPort/Bluetooth cable connector up off the logic board.
- Carefully peel the AirPort/Bluetooth ribbon cable off the top of the black plastic AirPort/Bluetooth housing.

Step 4



- Use the flat end of a spudger to pry the AirPort/Bluetooth cable connector up off its socket on the AirPort/Bluetooth board.

Step 5 — AirPort/Bluetooth Board



- Disconnect the camera cable by pulling its connector away from the socket on the logic board.
- ❗ Pull the connector toward the optical drive opening.

Step 6



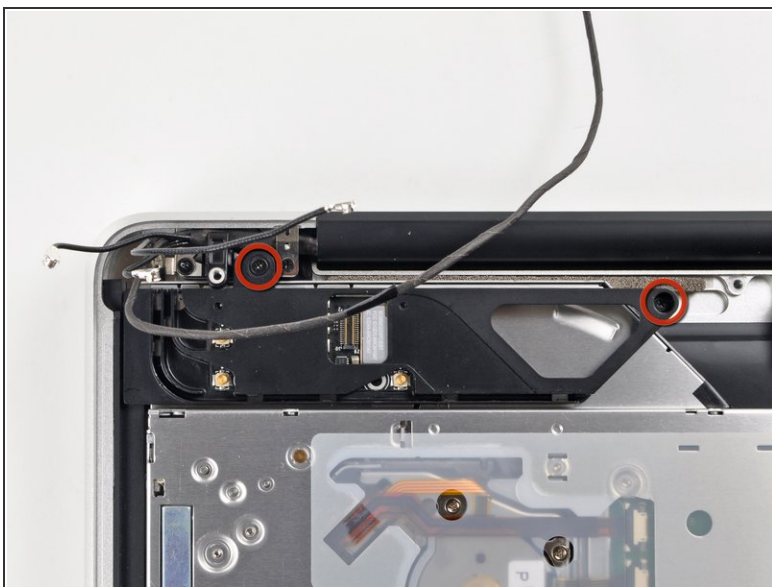
- Pry the AirPort and Bluetooth antenna connectors (3 total) up off the AirPort/Bluetooth board.

Step 7



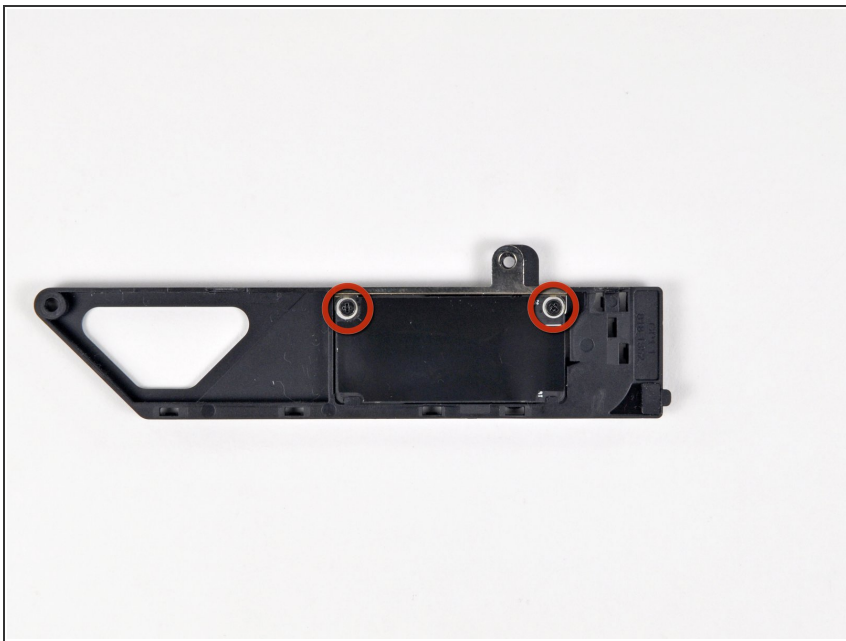
- De-route all three antenna cables from their channels in the black plastic AirPort/Bluetooth housing.

Step 8



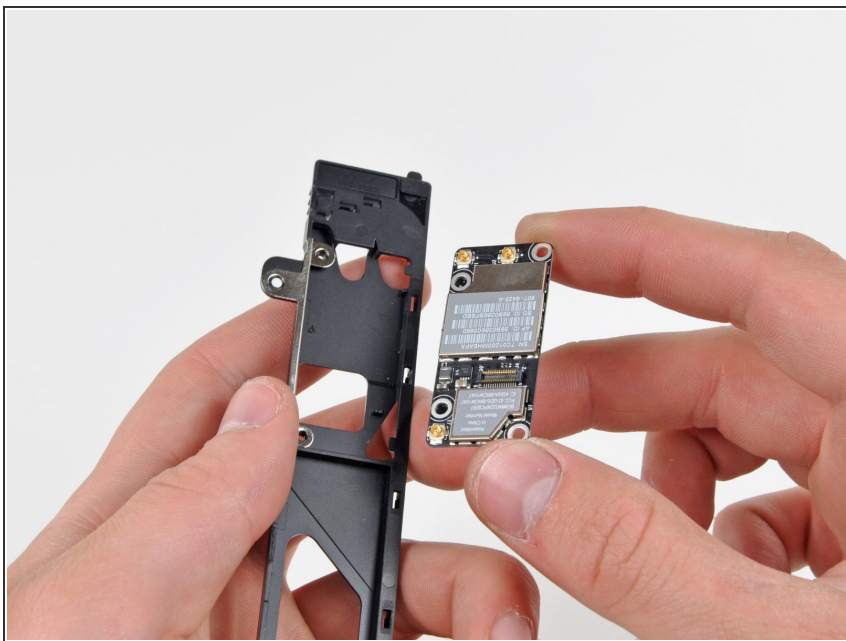
- Remove the two Phillips screws securing the AirPort/Bluetooth board housing to the upper case.
- Carefully remove the AirPort/Bluetooth assembly from the lower case.

Step 9



- Remove the two Phillips screws securing the AirPort/Bluetooth board to the AirPort/Bluetooth board housing.

Step 10



- Remove the AirPort/Bluetooth board from its black plastic housing.

Step 11



- ✦ Before securing the AirPort/Bluetooth bracket to the upper case, be sure the small plastic tab on its left edge is inserted into the small void cut into the black plastic optical drive opening.

To reassemble your device, follow these instructions in reverse order.