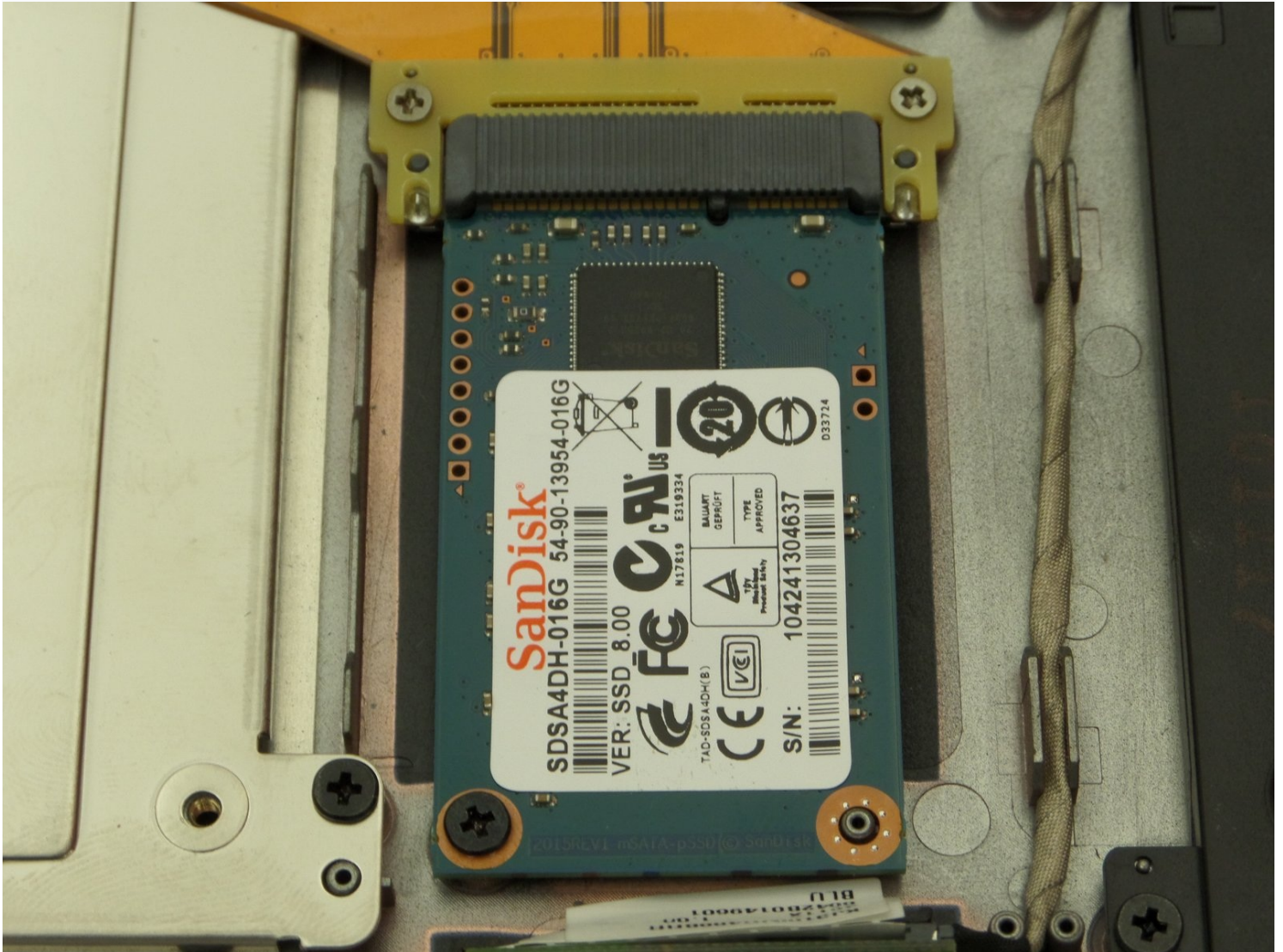




Cr-48 Chromebook SSD Replacement

Before starting, please: (1) make sure nothing...

Written By: Athar



INTRODUCTION

Before starting, please:

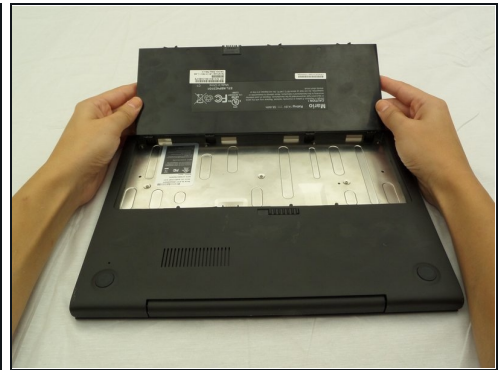
- make sure nothing is attached (such as AC adapter, USB, VGA, audio jack).
- remove any inserted SD card.

TOOLS:

Phillips #00 Screwdriver (1)

Tweezers (1)

Step 1 — Battery



- Slide the switch on the bottom of the laptop until the battery pops out.
- Once the battery pops out, you can remove it.

Step 2 — Remove Rear Rubber Feet



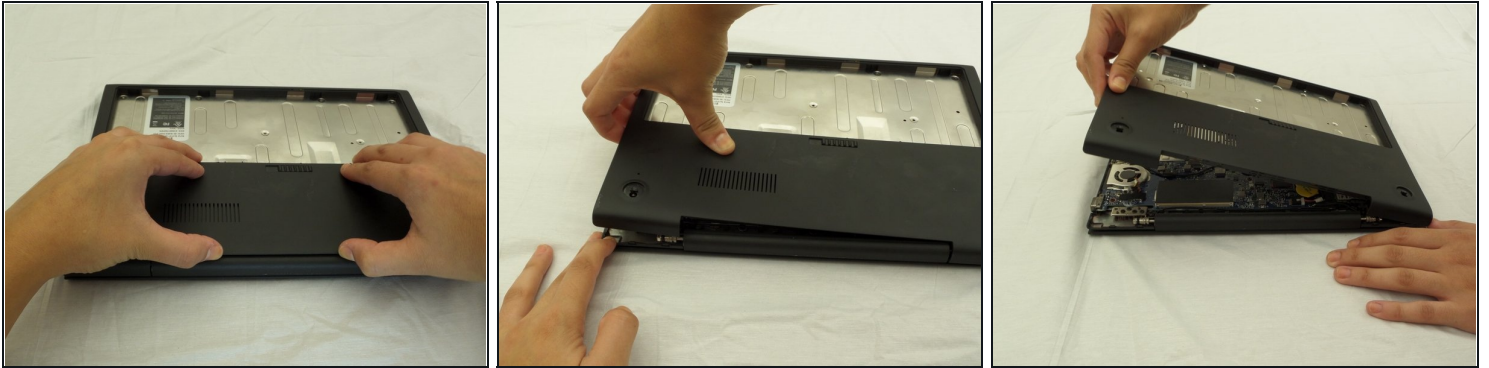
- Using a pair of tweezers, remove the two rear rubber feet to expose two hidden screws.

Step 3 — Remove Screws



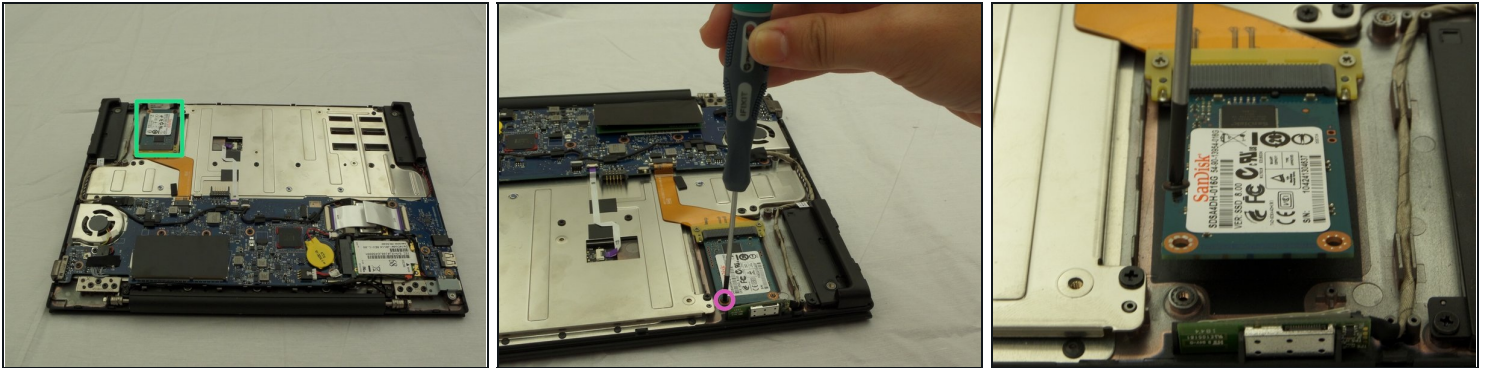
- Remove ten 3 mm screws in the battery compartment using a Phillips #00 screwdriver.
- Remove two 4.5 mm screws under the rubber feet using a Phillips #00 screwdriver.

Step 4



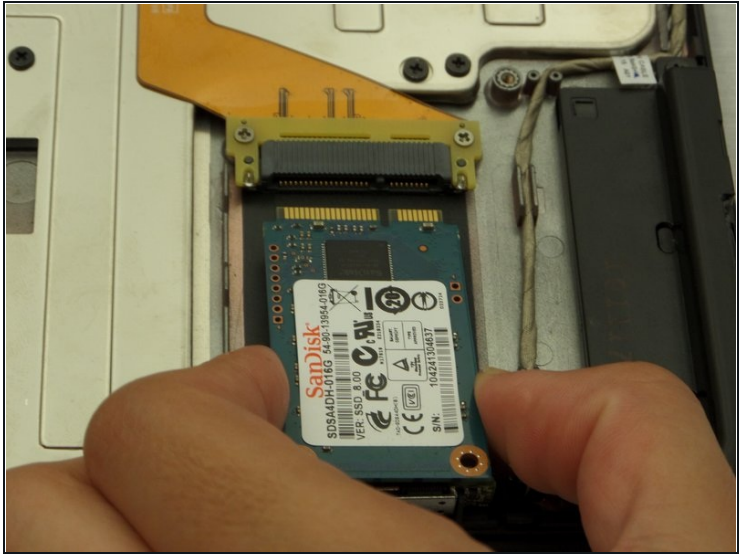
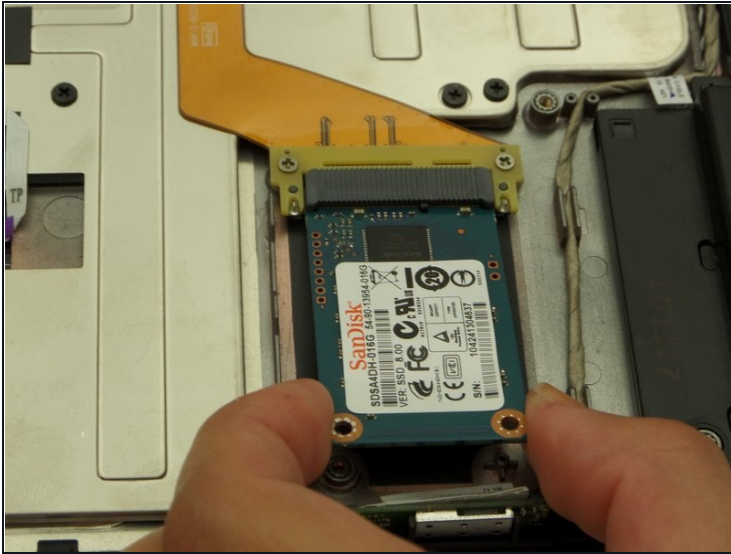
- Starting where the body of the laptop and the laptop screen meet, pry apart the lower case from the rest of the laptop.
- ① The case is easier to remove when separating in a clockwise motion, as seen in the pictures.

Step 5 — Locate SSD and Remove Screw



- Find the SSD located on a corner of the side directly opposite where the laptop screen and device body are connected.
- Remove one black screw on the SSD using a PH #00 screwdriver.
 - Size ph#00, approximately 3 mm long.
- ① Once unscrewed, the SSD will pop up from the device.

Step 6 — Remove SSD



- Firmly grasp the SSD with two fingers slightly upwards and pull.

To reassemble your device, follow these instructions in reverse order.