



Andis T Outliner Trimmer with T Blade Model G

Top Blade Replacement

This guide will teach you how to replace the top blade of the close-cutting T-Blade Andis Model G Trimmers.

Written By: David Taylor



INTRODUCTION

This repair guide will show you how to replace the top blade on your Andis T Outliner Trimmer with T Blade Model G.

A dull blade is the best indicator that you need to replace the blade. If your razor pulls your hairs or begins to feel rough on your skin, it's likely time for a replacement.

The five-step process is easy. Each of the steps is accompanied by a brief description and photos demonstrating what you will need to do.

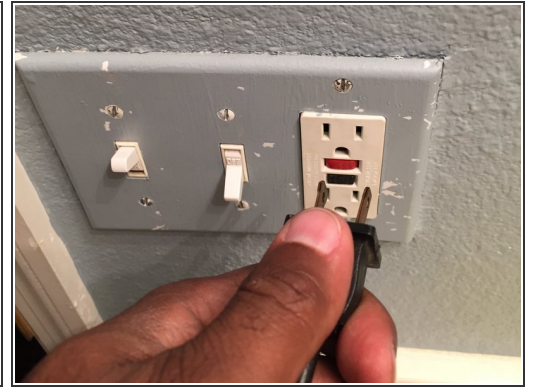
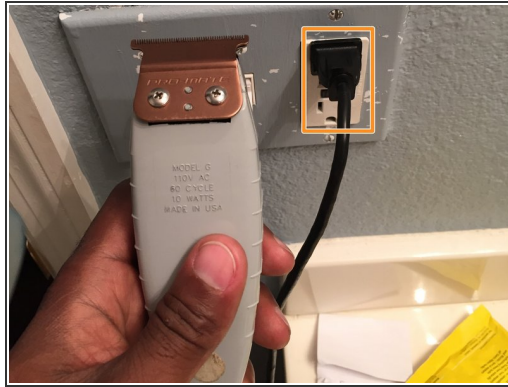
Note: The blade is sharp so use caution when handling it.



TOOLS:

- [Phillips #0 Screwdriver](#) (1)
-

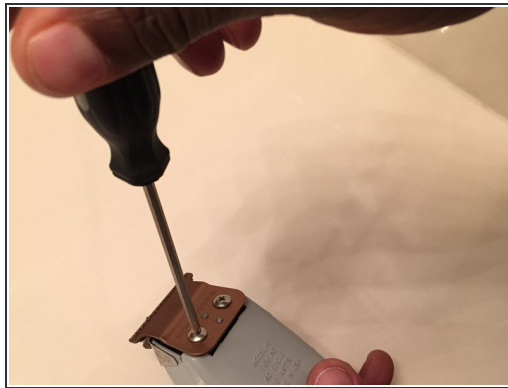
Step 1 — Disconnect plug from electrical outlet.



 Complete this step to reduce the risk of burns, fire, electric shock, or injury.

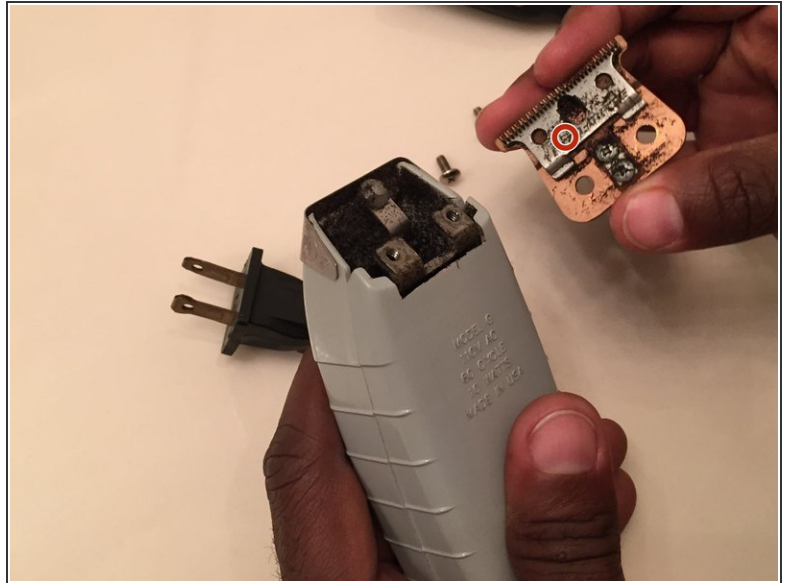
- Turn the control on the trimmers to "off".
- Remove the plug from the electrical outlet.

Step 2 — Remove two blade screws from top blade.



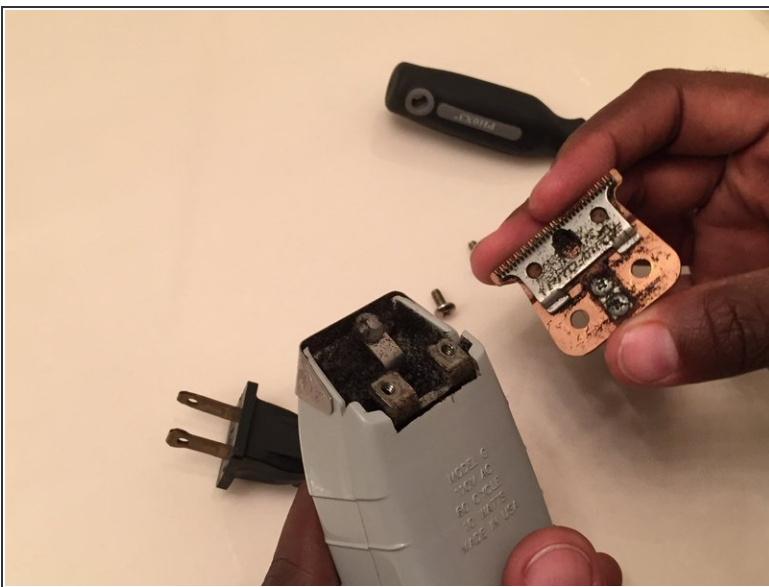
- Remove the two blade screws from the top blade of the trimmer.

Step 3 — Lift top blade from the device.



- Lift the top blade from the device.
- The bottom blade is attached, but not secured, to the underside of the top blade.

Step 4 — Remove bottom blade from top blade.



- Flip the top blade over.
- Lift the bottom blade from the top blade.

Step 5 — Clean and lubricate the device if necessary.



- Clean or lubricate the device if necessary.

To reassemble your device, follow these instructions in reverse order.