



Atari 5200 Game Cartridge Disassembly

These cartridges often will freeze due to a...

Written By: Zach Petryszyn



INTRODUCTION

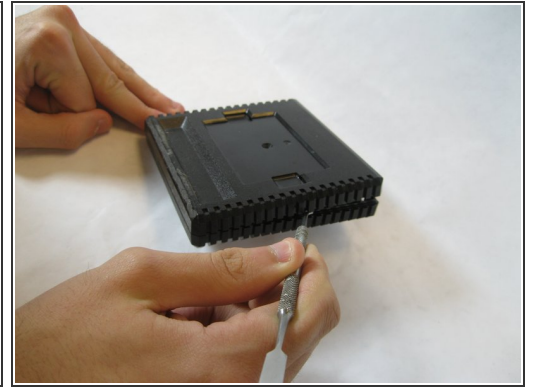
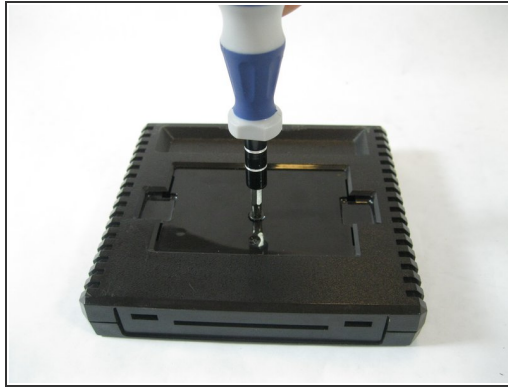
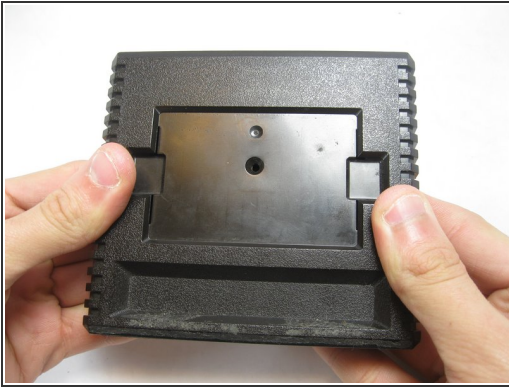
These cartridges often will freeze due to a poor connection to the mainboard. Opening it and removing excess dust will improve the connection, reducing the amount of freezing.



TOOLS:

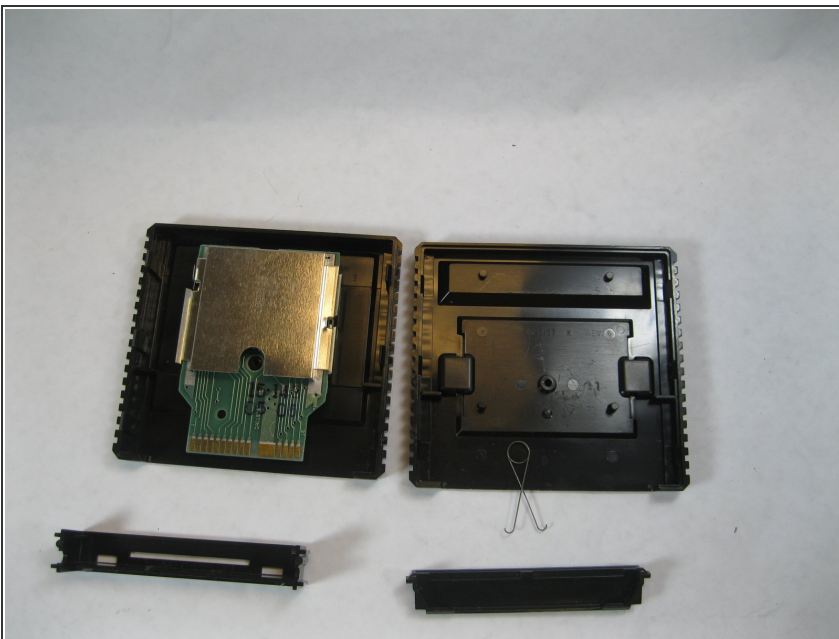
- [Compressed Air](#) (1)
 - [Soft Cloth](#) (1)
 - [High Content Rubbing Alcohol](#) (1)
 - [Phillips #000 Screwdriver](#) (1)
-

Step 1 — Opening up the cartridge



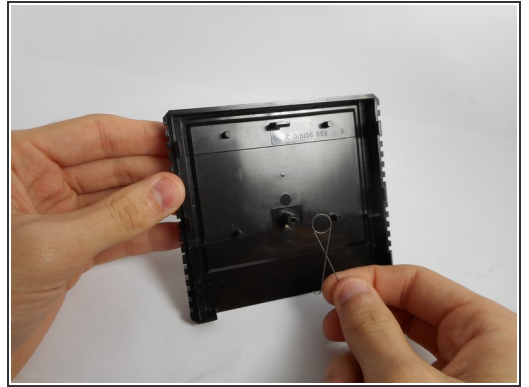
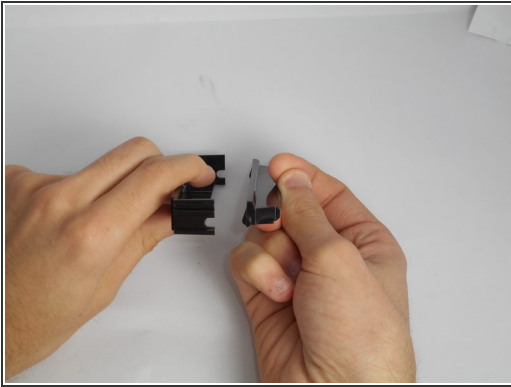
- Flip the cartridge over.
- Unscrew the single screw on the back.
- Carefully pry apart the casing. There are six (6) tabs that need to be released, three (3) each side. If you're not careful they will break. (experience has taught me)
- Set aside any case parts after disassembly.

Step 2 — Cleaning the Parts



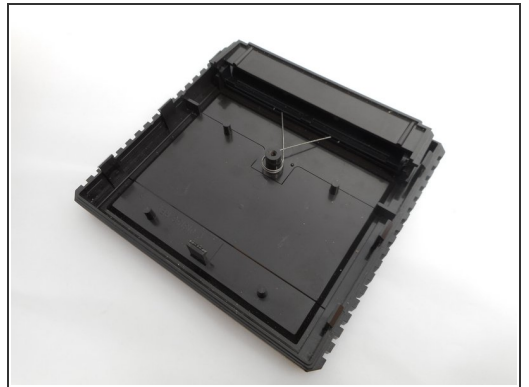
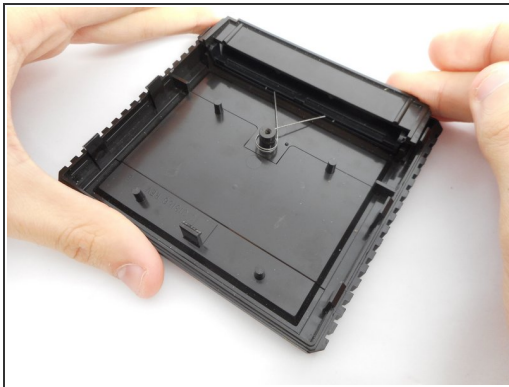
- Unscrew the board casing, and remove it.
- Use a compressed air can to blow off any excess dust off the board.
- Use an alcohol-dabbed cloth to wipe down the gold-plated contacts of the board.

Step 3 — Reassembly



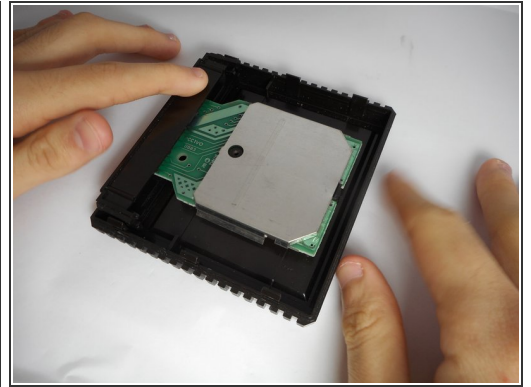
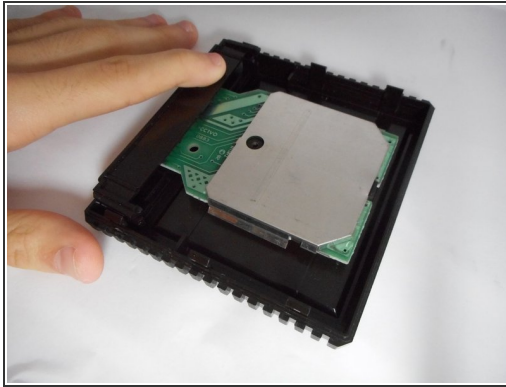
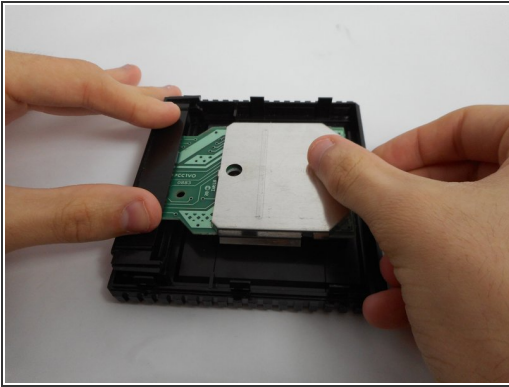
- Place the two contact protectors together.
- Place the spring on the knob in the cartridge.

Step 4 — Reassembly, Part 2



- Thread the spring into the connected plates.
- Push the plates into the cartridge against the pressure of the spring.

Step 5 — Finishing up



- Place the chip in the case.
- ⓘ It should "pop" into place.
- Screw the other side of the case on.

Be sure to test the game, and if freezing still occurs, check the contacts once again.