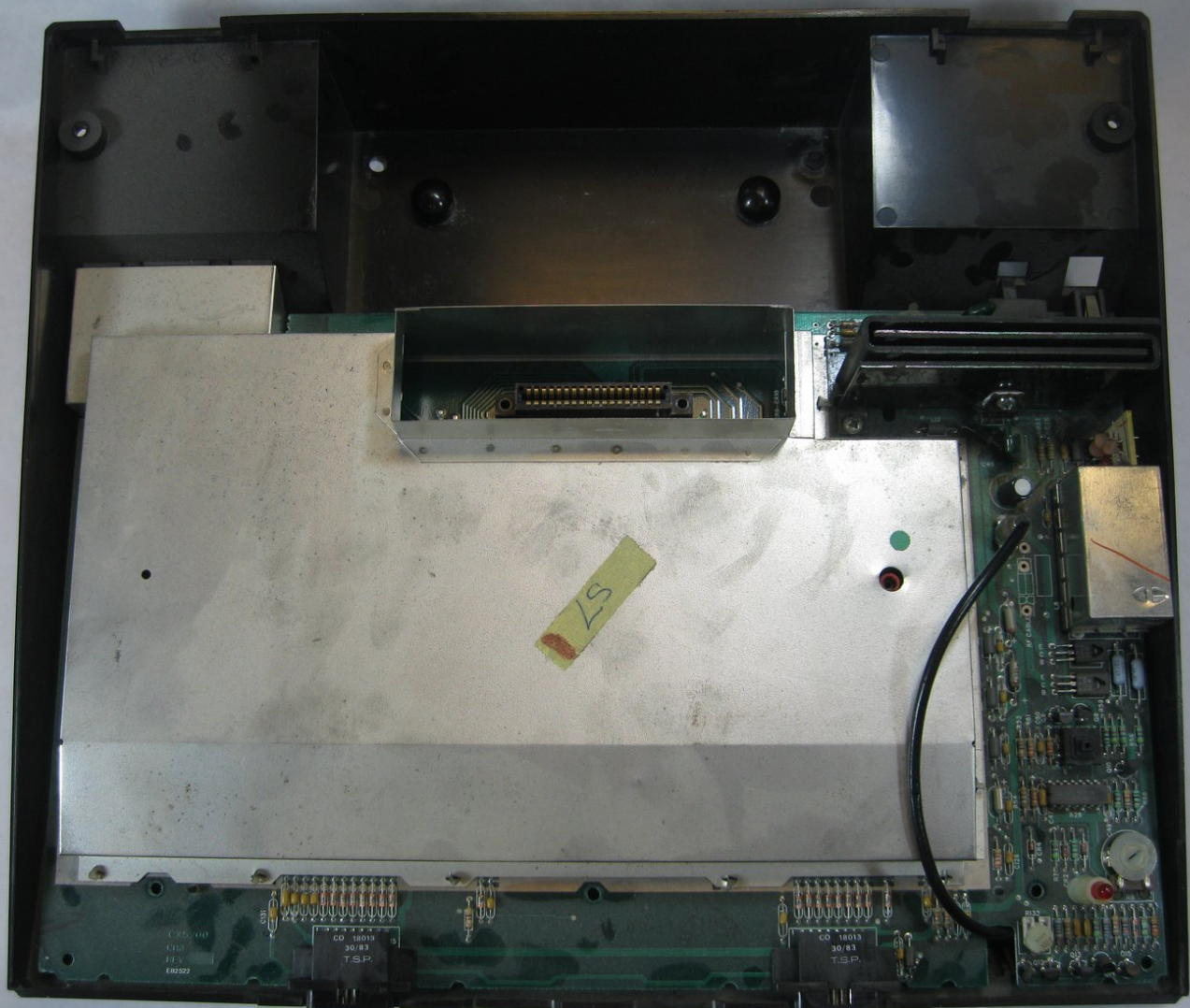




Atari 5200 Motherboard Cleaning

How to clean the motherboard of your Atari 5200 console.

Written By: Zach Petryszyn



INTRODUCTION

This guide will explain how to disassemble your Atari system in order to clean the dust from the motherboard. Dust build up can cause electrical problems for your Atari system, possibly causing it run very slow or not turn on. [WARNING: follow instructions as carefully as possible as failure to do so can damage your system.]



TOOLS:

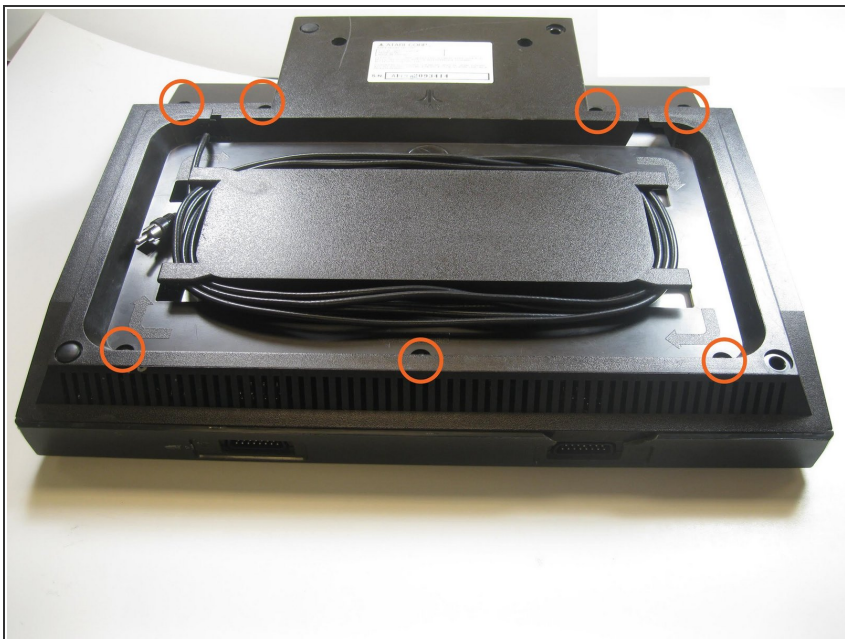
- [Phillips #0 Screwdriver](#) (1)



PARTS:

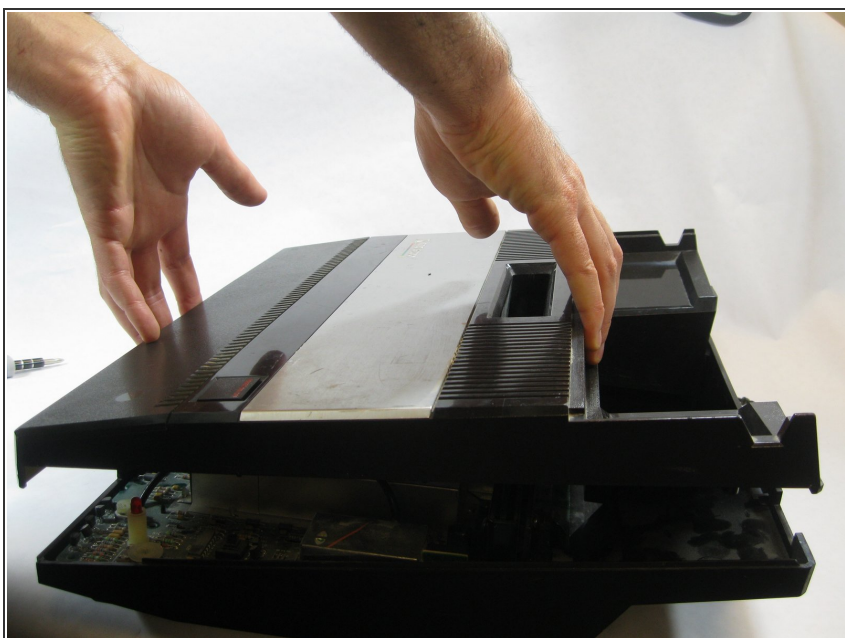
- [Compressed Air](#) (1)
- [Soft Cloth](#) (1)
- [High Content Rubbing Alcohol](#) (1)

Step 1 — Atari 5200 Motherboard Cleaning



- Flip your Atari Entertainment System over to its top so you can see the bottom. You'll see seven screws holding your system together. Use a Philips #0 screwdriver to remove all seven screws.

Step 2



- Flip the Atari Entertainment System back over so that you can now see the top.
- Use your hands to gently remove the top by sliding it off.

Step 3 — Access: Granted



- You will now have access to the motherboard.
- ⓘ The motherboard can be cleaned with a moist paper towel.
- ⚠ Be sure the motherboard is fully dry before playing your Atari Entertainment System or you may damage it!

To reassemble your device, follow these instructions in reverse order.