



# Samsung Galaxy Note 8.0 Battery Replacement

You will be removing the battery in this guide.

Written By: Joel



## INTRODUCTION

You will be removing the battery in this guide. If your battery will not charge or the charge does not last for more than a few hours, it is likely your battery needs to be replaced. There are several companies that supply replacement batteries for this tablet. It is necessary to remove the battery before removing any electrical components, and this guide will show you how.



### TOOLS:

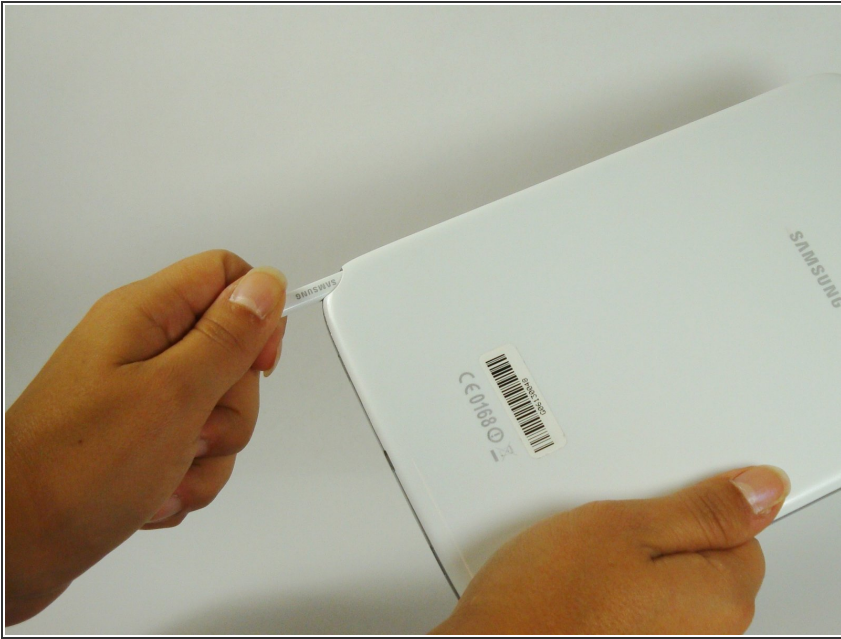
- [iFixit Opening Tools](#) (1)
- [Phillips #00 Screwdriver](#) (1)



### PARTS:

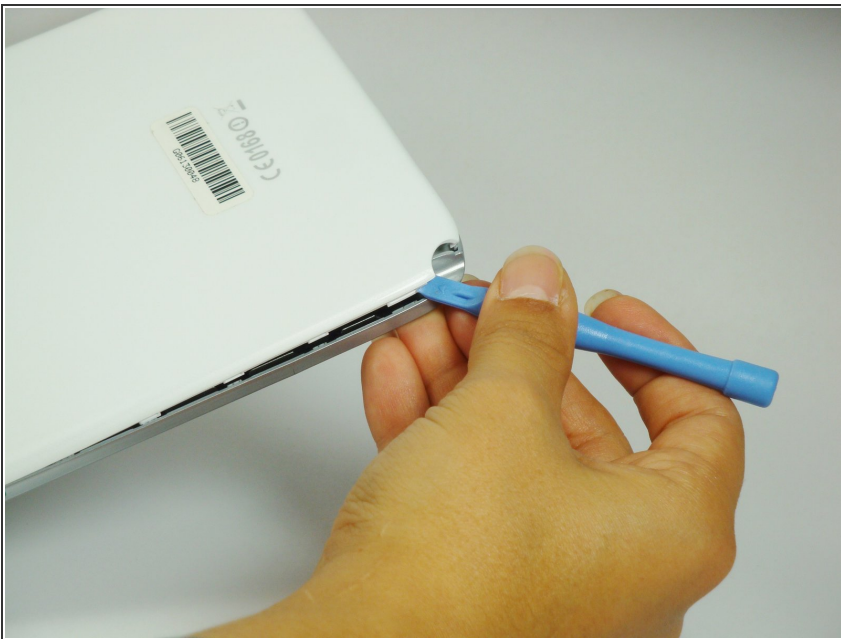
- [Samsung Galaxy Note 8.0 \(Wi-Fi Only\) Battery](#) (1)

## Step 1 — Back Cover



- Remove the Samsung S-Pen stylus.
- Remove the micro SD storage card.

## Step 2



- Using the plastic opening tool, start where the S-pen was located and carefully pry up the corner.

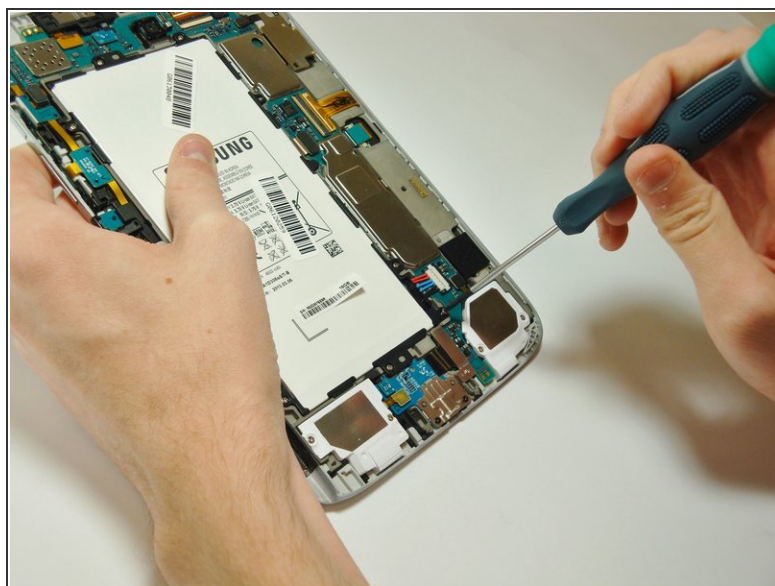


## Step 3



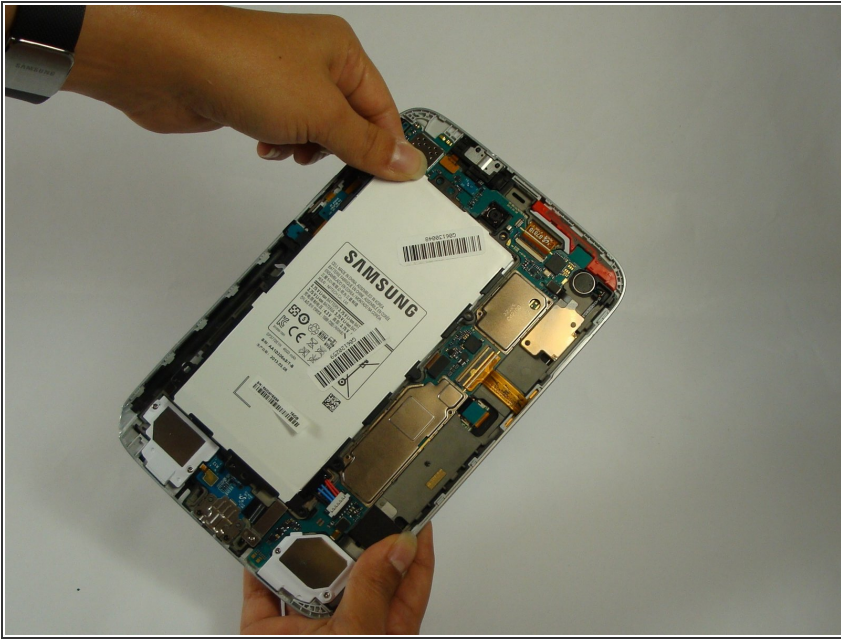
- Work your way around the entire device by carefully prying and sliding the plastic opening tool.
- ⓘ There are clips approximately 2cm apart. As you are removing the back cover you should hear the clips being dislocated from the tablet.

## Step 4 — Battery



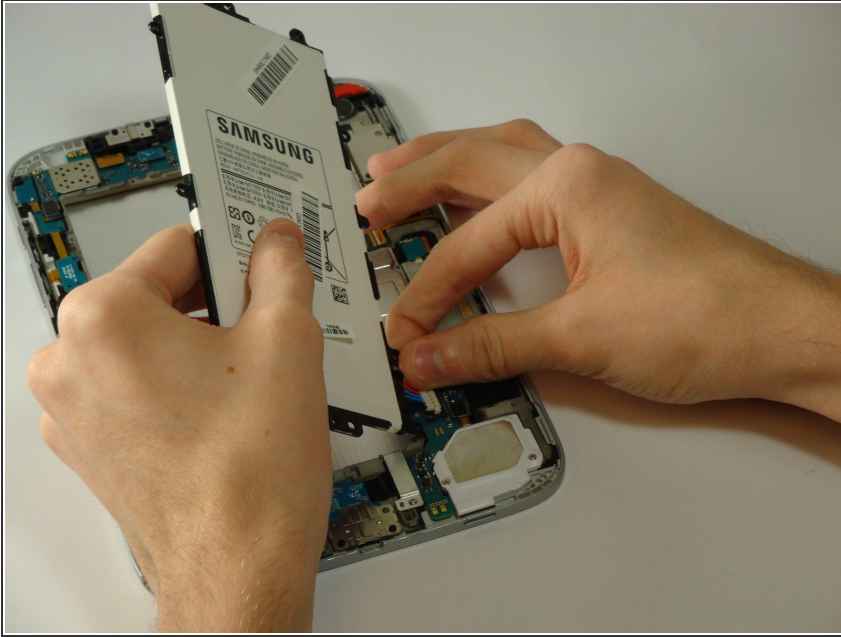
- Remove the 8 Phillips#00 3-mm screws holding the battery in place.

## Step 5



- Lift the top left corner of the battery up by the black tab.

## Step 6



- Gently grasp and lift up the white connector located at the bottom right corner of the battery. It is connected to the battery by two blue and two red wires.

⚠ Do not yank the connector by the wires. If it does not disconnect easily, slide a plastic opening tool between the white connector and the board to lift the connector away from the board.

To reassemble your device, follow these instructions in reverse order.